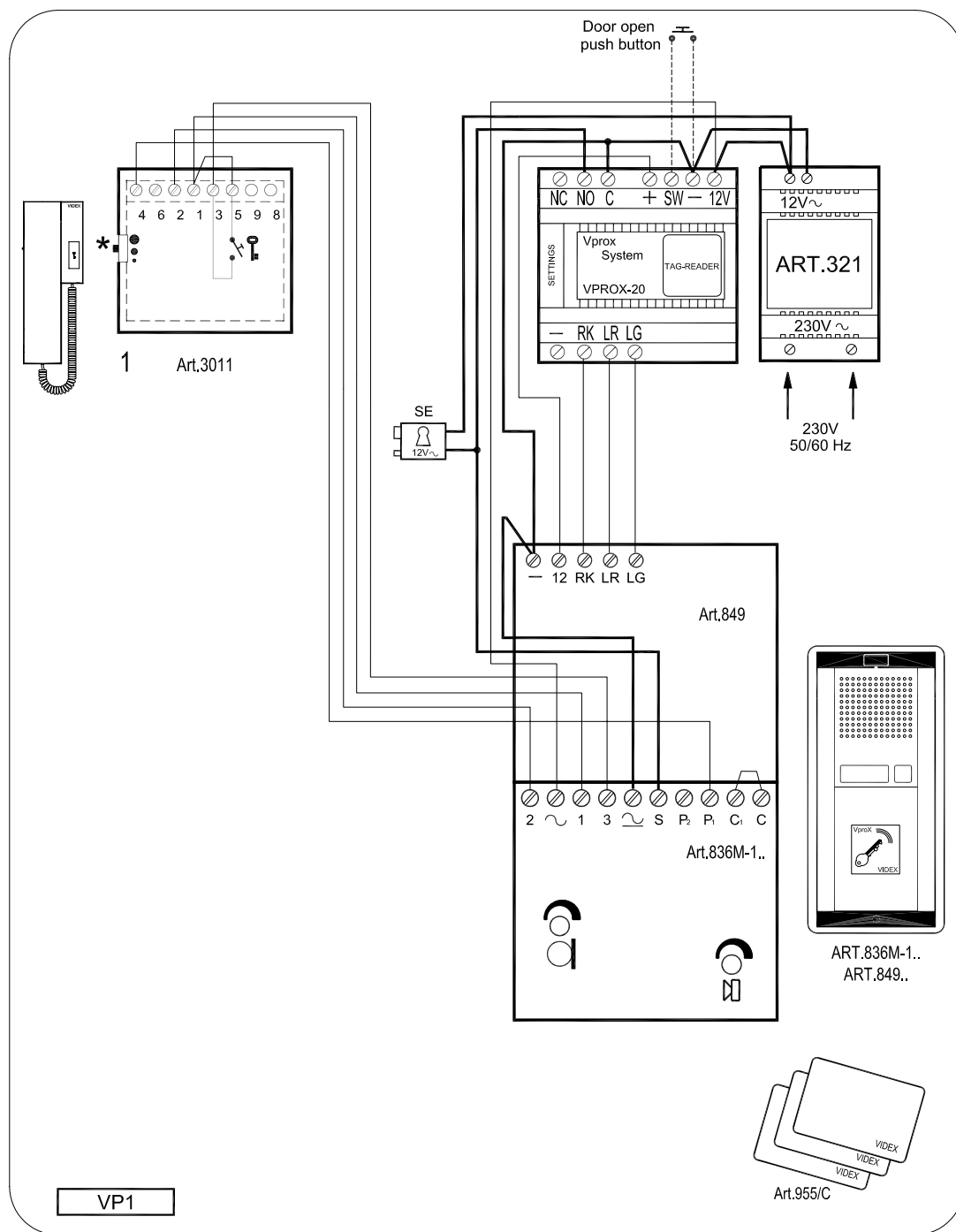


VPROXPHONE KIT KPX947 KPX947-S



ART.3011

- Citofono
- Intercom
- Innenstelle
- Poste d'appartement
- Telefono

ART.321

- Trasformatore
- Transformer
- Trafo
- Transformateur
- Transformador

ART.836M-1

- Modulo portiere elettrico
- Speaker unit module
- Aussenstelle mit Sprechereinheit
- Groupe phonie
- Unidad de habla/Botonera con parlante

ART.849

- Modulo lettore
- Reader module
- Lese module
- Module lecteur
- Modulo lector

ART.955/C

- Carta di prossimità
- Proximity card
- Transponder karte
- Carte de proximité
- Tarjeta de proximidad

ART.VPROX 20

- Cpu

SE

- Serratura elettrica (non inclusa)
- Electric lock (not included)
- Elektrisches Turschloß (nicht imbegriffen)
- Serrure électrique (non includ)
- Cerradura eléctrica (no incluida)

IMPORTANTE!

ESEGUIRE I COLLEGAMENTI
COME DA SCHEMA

IMPORTANT!

SYSTEM MUST BE WIRED
AS PER INSTRUCTION

IMPORTANT!

REALISER LES CABLAGES COMME
INDIQUÉ SUR LE SCHEMA

WICHTIG!

VERCABELUNG GEMASS DES
SCHEMAS DURCHFÜHREN!

IMPORTANTE!

EFFECTUAR LAS CONEXIONES
SEGUN EL ESQUEMA!

VP1

Art.955/C

VproX – 20 SYSTEM

1 DOOR, 20 KEYS

DESCRIPTION

The **VIDEX Vprox-20** is an advanced access control system based upon the VIDEX unique Coded proximity Key giving over 4 billion combinations. The system will operate and control one door and store up to 20 proximity Tag or Card, the door can also have an additional reader. Connections from the reader to the control equipment can be made using un-shielded 5 core cable up to a distance of 200 meters, or a maximum resistance of 10 Ohms.

- Push to exit switch door will operate the relay in the control unit for the programmed entry/exit time.
- Security against sabotage, is maintained by having the VproX control equipment remote from the reader head. Should un-stored proximity keys attempt to operate the system, the control unit will disable the reader after every attempt, the duration of the reader disable time will increase if further attempts are made.
- The control equipment has two LEDs that confirms all data in programming mode.
- The system has 2 push buttons for programming the information.
- Using these buttons it is possible to :
 - Program up to 20 unique proximity Tags.
 - Delete one or more Tags.
 - Know if a key is already programmed and its memory location
- There is also a 2 Dip-Switch bank to program the door relay time (*2-4-6-10 seconds*)

INITIALISATION

When the installation has been completed (*carried out in accordance with the supplied wiring diagram*), the system can be powered up and programmed following the VproX-20 Programming FLOW CHART, on completion the VproX-20 is ready for use.

NOTE: we suggest to separate the Mains lines (*lift, electricity, electric lock, etc.*) from the reader connection line (*at least 10 cm. far or use shielded cable for it*) to avoid electrostatic discharge and magnetic influence which could give control problems to the CPUs present on the system.

OPERATION

In stand by mode, when a user put a stored proximity key on the reader, the reader LED's will display green and a sharp "beep" will be emitted. If the key is not programmed the reader LED's will display Red and a low "beep" will be emitted

To operate relay for the programmed time (*door open*) a n/o switch or short across terminal "SW" to ground is required.

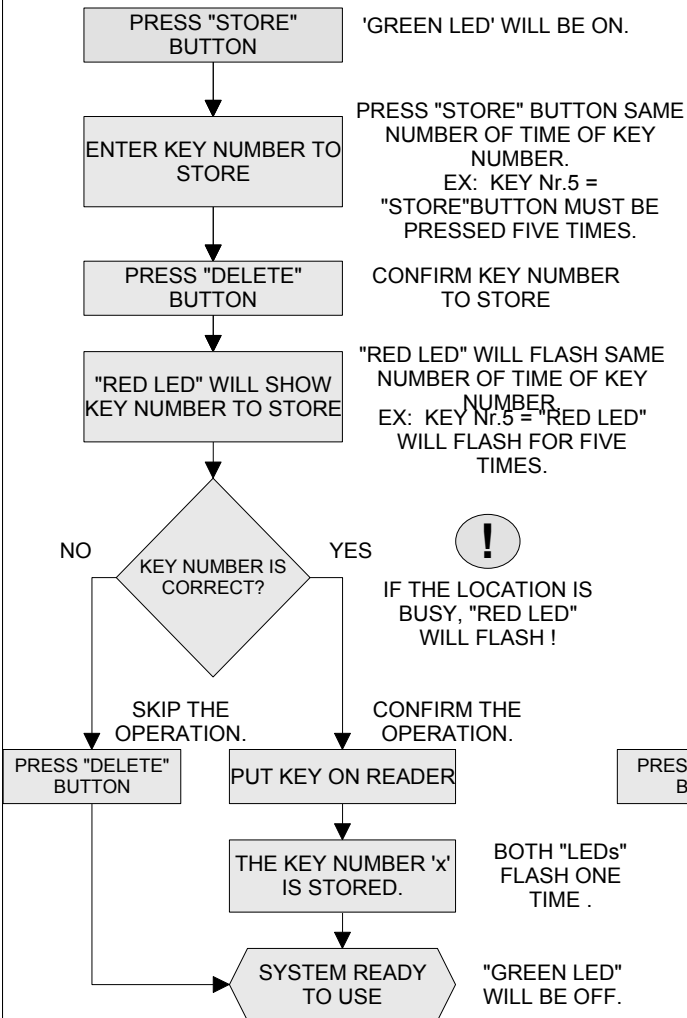
TECHNICAL SPECIFICATIONS

Storage capacity	20 keys or Tags
Working voltage	12V DC +/- 10%
Current (Quiescent)	Approx. 100mA
Current (During operation)	Approx. 200mA
Working temperature	-10 +50 C degrees
Lock output	5A 30VDC Dry contact

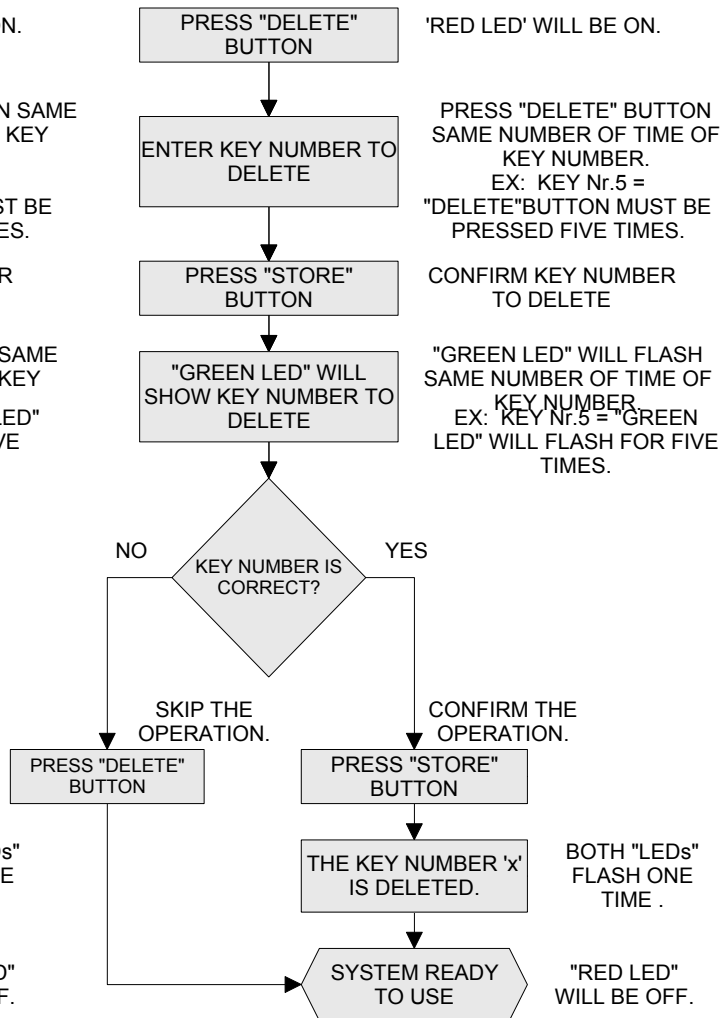
VIDEX - VproX-20 PROGRAMMING

To program the system, please remove protection cover and use pushbuttons.

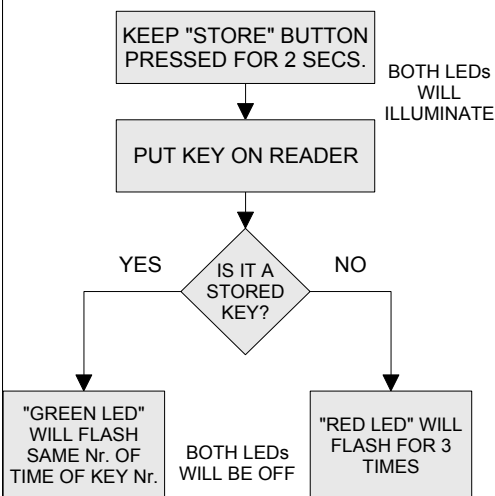
TO STORE A KEY



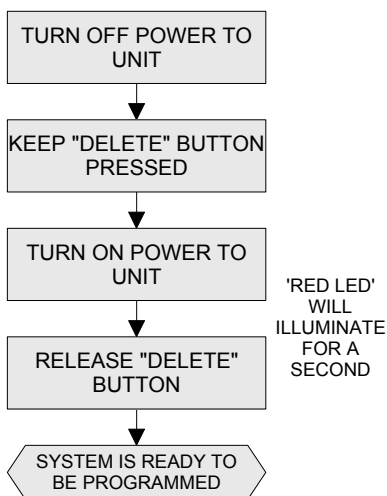
TO DELETE A KEY



TO READ KEY NUMBER



TO DELETE ALL KEYS



IT IS IMPORTANT THAT THE "DATA LIST" IS KEPT UP TO DATE AND STORED IN SAFE PLACE.

USERS DATA LIST	
User Name	Nr.
	1
	2
	3
	4
	5
	6
	7
	8
	9
	10
	11
	12
	13
	14
	15
	16
	17
	18
	19
	20

VIDEX Electronics Srl
Technical line +39 0734 631669

VIDEX SECURITY (UK) Ltd
Technical line 0191-224-3174