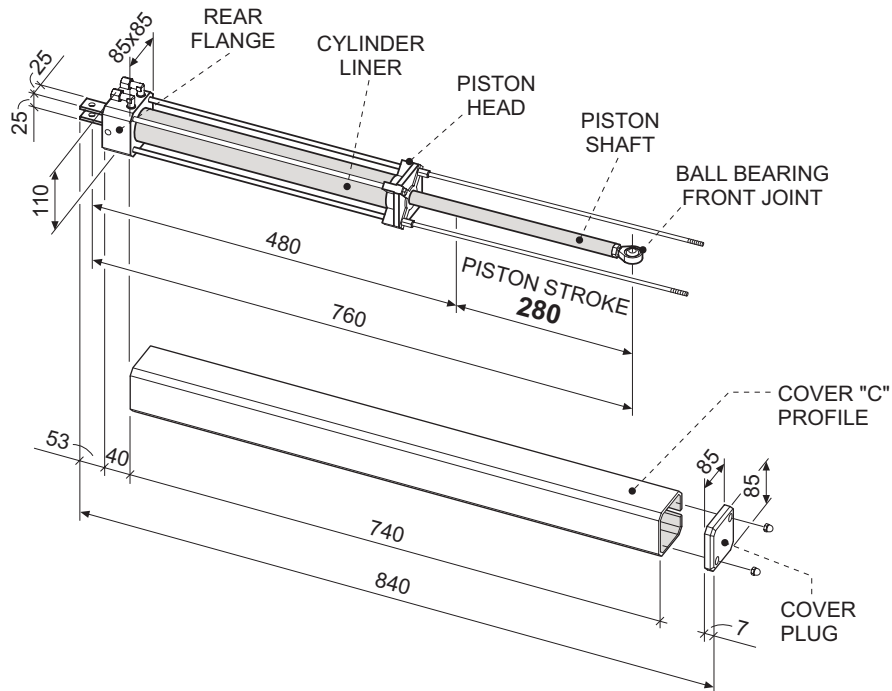
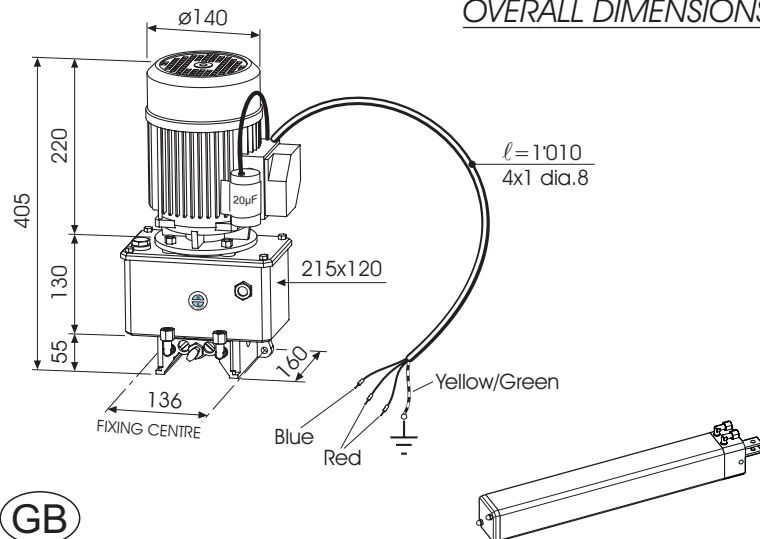


## OIL-HYDRAULIC RAM OPERATOR OVERALL DIMENSIONS



## HYDRAULIC MOTOR PUMP MEC 700/80 VENTIL

### OVERALL DIMENSIONS



"MEC 800" is an electro-hydraulic operator designed to open/close solid panel doors and trap doors of large dimensions. By means of its dual structure, ie. motor pump assembly and ram operator, it can electrically operate gate weights from 450 Kg up to 600 Kg. Where heavier rating is required, it is possible to install two rams with one double-tank motor pump on each gate leaf, to operate gate weights of 500 Kg up to 700 Kg.

The air-cooled electric motor is suitable for heavy duty applications. The motor pump assembly is fitted with safety pressure valves and double locking device to hydraulically hold the gates in the open and close positions; override manual control is incorporated for hand operation in case of emergency. Connection of the motor pump assembly to the hydraulic ram operator is by means of rigid copper pipes to an oil shunting block, and by flexible hoses from the block to the ram to allow the angular motion of the gates.

"MEC 800" is available in different options to meet the most various application requirements, and the range includes operators with the following features: non braking or braking on opening and closing cycles, locking or non locking, with or without flow regulators. Two stroke options are available: 280mm (for gates up to 3 meters) and 400mm (for gates from 3 to 5 meters).

"MEC 800" can be connected to the Elpro control panel, an extremely reliable control unit, and can be remotely operated from a distance by a radio transmitter, customized on request, or by a key switch, the key can be also customized having different tothing options, or by a digital key pad; the system can be connected to safety devices such as safety rubber profiles and photocells.

### TECHNICAL SPECIFICATIONS

#### OIL-HYDRAULIC RAM OPERATOR

Shaft excursion speed	-----	28sec.
Piston stroke	-----	280mm
Piston diameter	-----	50mm
Shaft diameter	-----	22mm
Max. traction force during opening	-----	390Kg
Max. thrust during closure	-----	490Kg
Weight of Mec 800	-----	5.5Kg
Dimensions (length x width x height)	-----	840x85x110mm
Gate weight	-----	from 450 to 700Kg

#### ELECTRIC MOTOR

Power output	-----	0.37KW (0.5PS)
Supply voltage	-----	230V
Frequency	-----	50Hz
Absorbed power	-----	510W
Absorbed current	-----	2.4A
Motor rotation speed	-----	1'350 r.p.m.
Capacitor	-----	20µF
Intermittent service	-----	S3

#### MEC 700/80 VENTIL HYDRAULIC UNIT

P6 - Hydraulic pump capacity	-----	1.6 l/min.
Average working pressure	-----	2 MPa (20 bar)
Maximum supplied pump pressure	-----	4 MPa (40 bar)
Hydraulic oil type	-----	Oil Fadini
Working temperature	-----	-25°C +80°C
Oil reservoir capacity	-----	2l
Static motor pump weight	-----	10Kg
Protection standard	-----	IP 673

#### PERFORMANCE

Service cycle	-----	28s opening - 30s dwell - 28s closing - 30s dwell
Complete cycle time	-----	116 s
Complete Opening - Dwell - Closing - Dwell cycles	-----	.No.31/hour
Annual cycles (with 8 hours of use per day)	-----	.No.90'000

stroke **280mm**

Drwg. No. **1108**

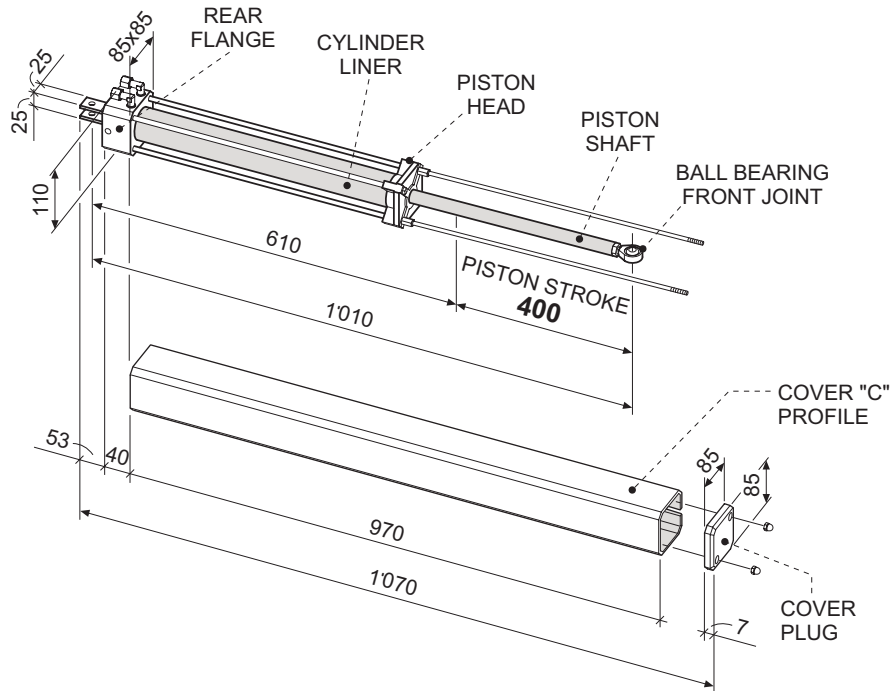
**TECHNICAL DATA TABLE**

**OIL-HYDRAULIC GATE OPERATOR  
FOR OUTSIDE APPLICATION**

**MEC 800 SPECIAL**

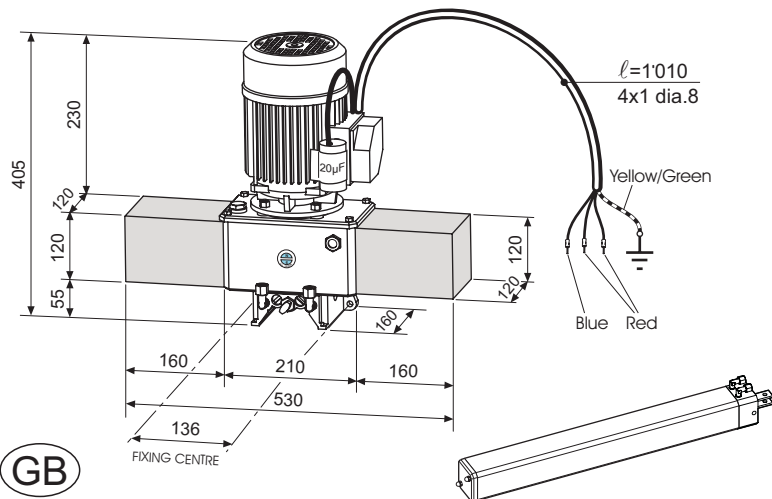


## OIL-HYDRAULIC RAM OPERATOR OVERALL DIMENSIONS



## HYDRAULIC MOTOR PUMP MEC 700/80 VENTIL

### OVERALL DIMENSIONS



FADINI  
the gate opener  
Made in Italy



"MEC 800" **400 mm stroke** is an electro-hydraulic operator designed to open/close solid panel doors of 3m up to 5 m width and trap doors of large dimensions.

By means of its dual structure, ie. double-tank motor pump assembly and hydraulic ram actuator, it can electrically operate gate weights of 600 kg up to 800 Kg.

Where heavier rating is required, it is possible to install two hydraulic rams with one double-tank motor pump to operate gate weights of 800 kg up to 1'000 Kg.

The air-cooled electric motor is suitable for heavy duty applications. The motor pump assembly is fitted with safety pressure valves and double locking device to hydraulically hold the gates in the open and close positions; override manual control is incorporated for hand operation in case of emergency. Connection of the motor pump assembly to the hydraulic ram operator is by means of rigid copper pipes to an oil shunting block, and by flexible hoses from the block to the ram to allow the angular motion of the gates.

"MEC 800" is available in different options to meet the most various application requirements, and the range includes operators with the following features: non braking or braking on opening and closing cycles, locking or non locking, with or without flow regulators.

"MEC 800" can be connected to the Elpro control panel, an extremely reliable control unit, and can be remotely operated from a distance by a radio transmitter, customized on request, or by a key switch, the key can be also customized having different toothing options, or by a digital key pad; the system can be connected to safety devices such as safety rubber profiles and photocells.

### TECHNICAL SPECIFICATIONS

#### OIL-HYDRAULIC RAM OPERATOR

Shaft excursion speed - P6 .....	44sec.
Shaft excursion speed - P12 .....	24sec.
Piston stroke .....	400mm
Piston diameter .....	50mm
Shaft diameter .....	22mm
Max. traction force during opening .....	390Kg
Max. thrust during closure .....	490Kg
Weight of Mec 800 .....	7.2Kg
Dimensions (length x width x height) .....	1'070x85x110mm
Gate weight .....	from 600 to 1'000Kg

#### ELECTRIC MOTOR

Power output .....	0.37KW (0.5PS)
Supply voltage .....	230V
Frequency .....	50Hz
Absorbed power .....	510W
Absorbed current .....	2.4A
Motor rotation speed .....	1'350 r.p.m.
Capacitor .....	20µF
Intermittent service .....	S3

#### MEC 700/80 VENTIL HYDRAULIC UNIT

P6 - Hydraulic pump capacity .....	1.6 l/min.
P12 - Hydraulic pump capacity .....	3.1 l/min.
Average working pressure .....	2 MPa (20 bar)
Maximum supplied pump pressure .....	4 MPa (40 bar)
Hydraulic oil type .....	Oil Fadini
Working temperature .....	-25°C +80°C
Oil reservoir capacity .....	4,5l
Static motor pump weight .....	16Kg
Protection standard .....	IP 673

#### PERFORMANCE with P6 pump

Service cycle: 44s opening - 50s dwell - 44s closing - 50s dwell	
Complete cycle time .....	188 s
Complete Opening - Dwell - Closing - Dwell cycles .....	No.19/hour
Annual cycles (with 8 hours of use per day) .....	No.55'000

#### PERFORMANCE with P12 pump

Service cycle: 24s opening - 30s dwell - 24s closing - 30s dwell	
Complete cycle time .....	108 s
Complete Opening - Dwell - Closing - Dwell cycles .....	No.33/hour
Annual cycles (with 8 hours of use per day) .....	No.96'000

stroke **400mm**

OIL-HYDRAULIC GATE OPERATOR  
FOR OUTSIDE APPLICATION

**MEC 800 SPECIAL**



Drwg. No. **1368**

**TECHNICAL DATA TABLE**