



Made in Italy



For its quality processes management Came Cancelli Automatici is ISO 9001:2000 certified, and for its environmental management it is ISO 14001 certified. Came designs and manufactures entirely in Italy.

# The range

## Control units

- RBM84** Control unit for proximity cards, magnetic cards, numeric code keypads and Atomo and Tam series transmitters.
- PC30** A serial interface for connecting a PC at a distance of up to 1000 m.
- REM** Expansion panel configured to take the AF43S radio frequency card.

## Command accessories and transponder cards

- TSP00** Transponder card sensor.
- WAO1** "Stand Alone" transponder sensor with built-in 433,92 MHz transmitter
- TST01** Transponder card in ISO 7810 - 7813 format.
- TST04** Rewritable transponder card in ISO 7810 - 7813 format.
- PCT** Transponder keychain.
- TAG** Transponder bulb. It can be housed in the Atomo serie, TOP 432NA and TOP 434NA transmitters.

## Command accessories and magnetic cards

- LT001** Sensor for magnetic cards.
- TST02** Magnetic card in ISO 7810 - 7813 format.
- LTT** Sensor fitter.

## Remote control accessories

- Tam 433.92 MHz series
- TAM-432SA** 2-channel transmitter.
- T432** 2-channel transmitter.
- T434** 4-channel transmitter.
- T438** 8-channel transmitter.

- Atomo 433.92 MHz rolling code series
- AT01** 1-channel transmitter.
- AT02** 2-channel transmitter.
- AT04** 4-channel transmitter.

## Radio frequency cards

- R501N** Radio module for RBM84. It can be used with Atomo and Tam series transmitters.
- AF43S** 433.92 MHz plug-in superheterodyne radio card, it functions also with Atomo and Tam series transmitters.

## Additional accessories

- TOP-A433N** 433.92 MHz antenna.
- TOP-RG58** Antenna cable.

## Warning and control accessories

- PSSRV** Ø 210 mm Red-green traffic light.
- PSINS** Two-sided light box reporting "FREE-FULL" warnings.
- SMA** Single-channel magnetic sensor to detect metallic masses.
- SMA2** Two-channel magnetic sensor to detect metallic masses.

## Command Accessories

- S5000** External selector keypad with electronic security features, and backlit keys (9 keys).
- S6000** Embedded selector keypad with electronic security features (7 keys).
- S7000** External selector keypad with electronic security features (7 keys).
- R800** Decoding card for S5000 - S6000 - S7000 selectors.
- R700** Decoding card for the TSP00 and LT001.

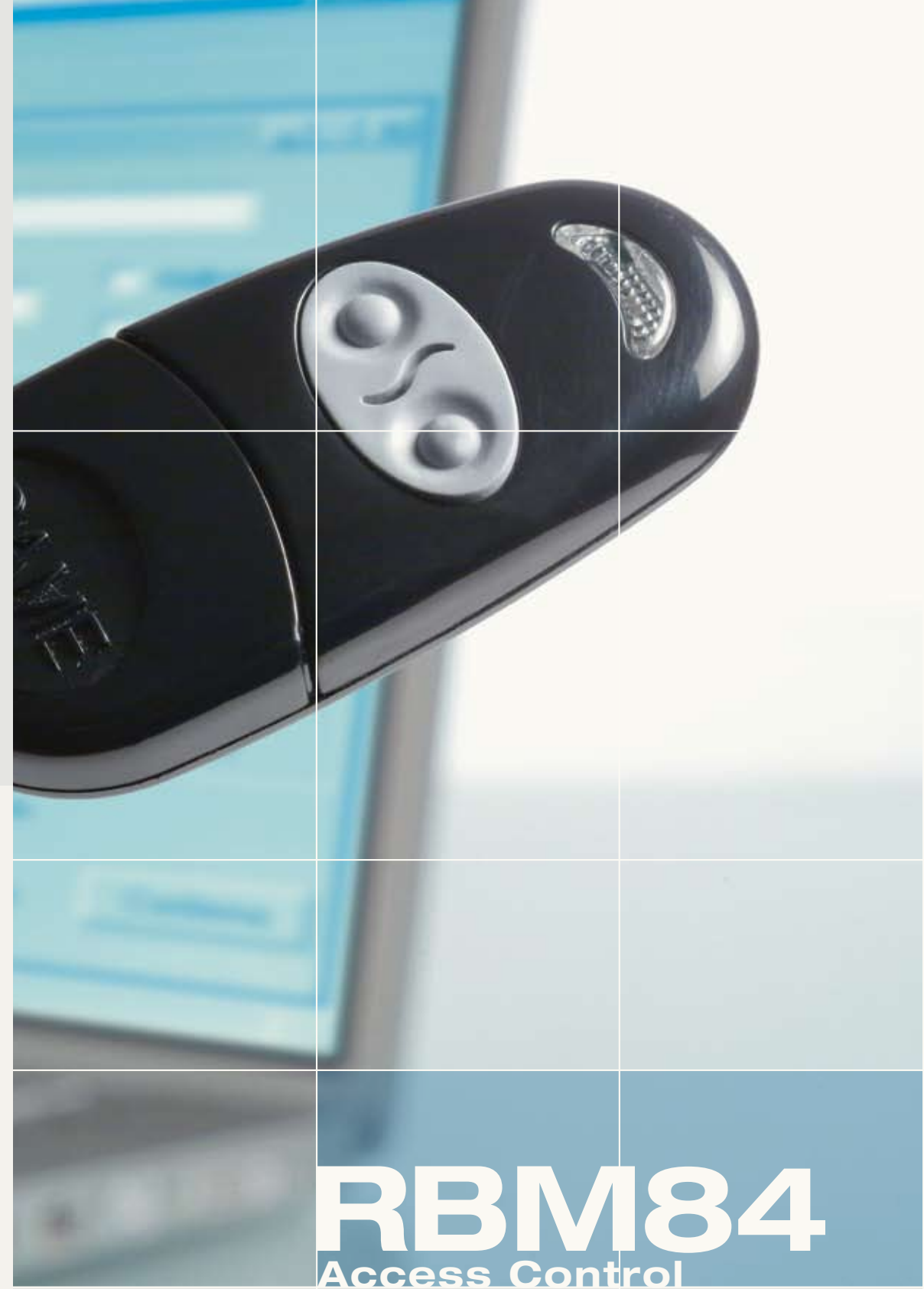
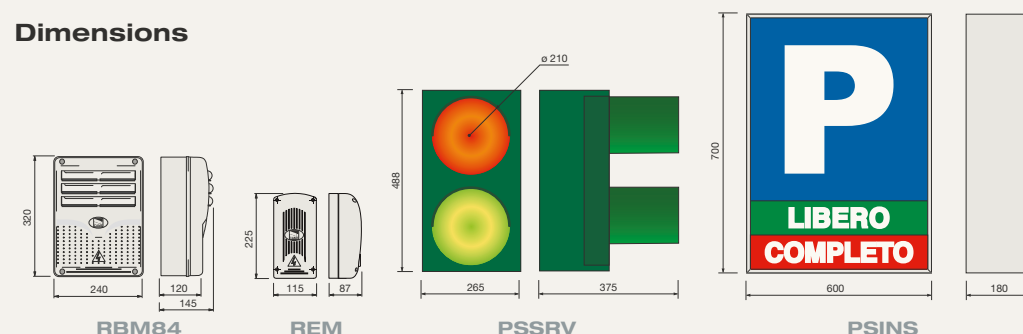
## Technical features

Type	RBM84	PC30	TSP00	LT001
Protection rating	IP54	-	IP54	-
Power Supply (V)	230 A.C. 50/60Hz	12 A.C	from R700	from R700
Operating temperature (C°)	-20 ÷ +55	-20 ÷ +55	-20 ÷ +55	-20 ÷ +55
Dimensions (mm)	320 x 240 x 145	117 x 75 x 25	70 x 70 x 70	90 x 28 x 27

## Limits to use

- Max number of users** 5.500
- Dedicated software** YES (see specifications in software manual)
- Pc-free** NO
- Type of pc connections** RS232 - RS485
- Max distance between the RBM84 and PC** 1000 m with a PC30 (RS485)
- Max number of sensors connected** 124 (max configuration with 60 REM)
- Relay outputs with 60 REM** 128
- Digital inputs** 128

## Dimensions



Access control system featuring evolved controls for up to 5,500 users

# RBM84

## Access Control

Technology, flexibility and performance are the three key words that meet the needs of both small and large facilities

In fact the RBM84 system perfectly integrates with all Came types of command, its controls can manage up to 128 thresholds through its dedicated software, even through a modem.

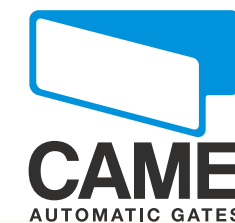


Came cancelli automatici S.p.a.

via Martiri della Libertà, 15  
31030 Dossan di Casier  
Treviso - Italy

www.came.it - info@came.it

© Came DEF5646 06/2007





# RBM84

## Access Control

State-of-the art access control system for up to 5,500 users

It is ideal for many types of applications and specifically designed for facilities with large numbers of users that require the integration of several control devices (transmitters, coded keypads, cards, etc.) and where it is essential to have real-time data available for all the users in the controlled area. In fact, RBM84 is a product that brings together high levels of practical flexibility and the latest manufacturing technologies available on the market today.

## The software

The dedicated software features a clear graphic interface, easy to use, runs on windows mode and does not require any particular hardware. It can be configured according to the requirements of the systems, and can memorize cards and parameters assigned to each user.

Numerous are the functionalities that are already programmed for the various types of employment such as multi-level parking, event filing, control of single automations from a pc, "scalable" control user calendar functions for each user, and much, much more.

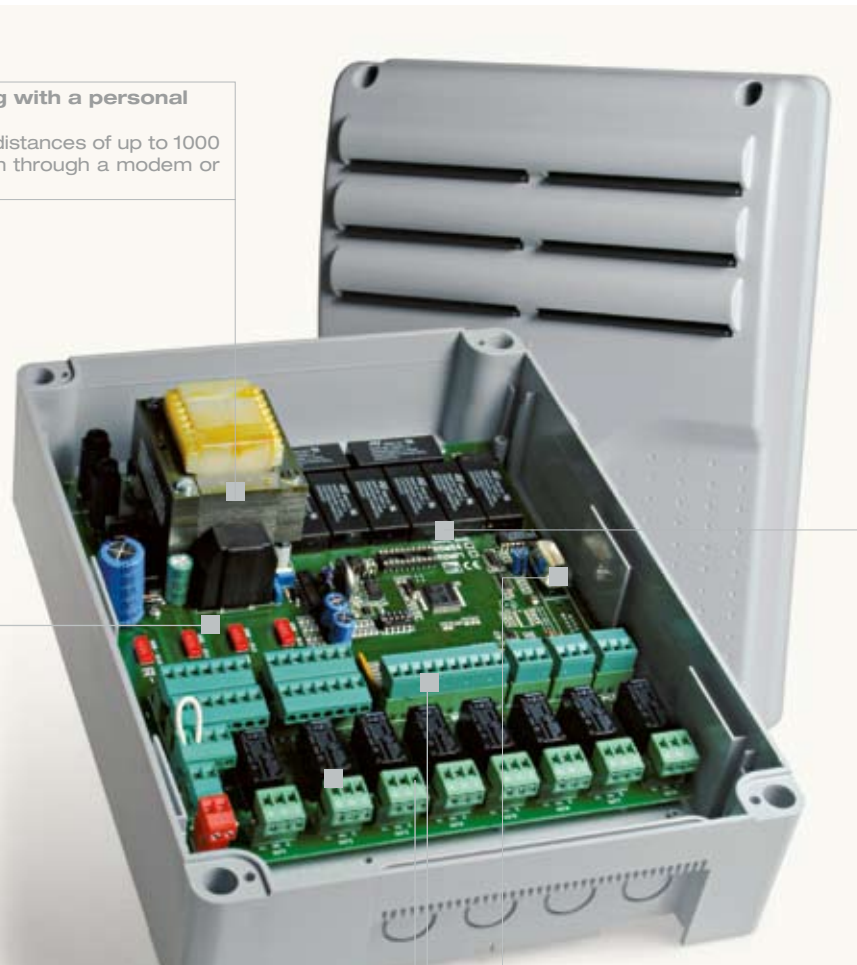


Companies, hospitals, sports centers, parking lots, docks and camping grounds are just some of its applications

**Special functions manageable by the software such as "scalable entries".**  
Users can purchase a number of "credits" that will be programmed into their transmitter, or assigned to the keypad code, to then use at will on the services provided. Each command then transmits to the control unit the "value" of the service to be scaled down from the clients' credits.

**The TSP00 proximity card sensor.**  
It is the ideal tool for threshold selection. The card is in fact practical and sturdy, it resists sun rays and magnetic fields alike.

**Functioning with a personal computer.**  
It works for distances of up to 1000 metres, even through a modem or GSM.



**The RBM84 is designed to work alongside transmitters.**  
The Atomo and Tam series transmitters, in fact, can be integrated into the system, and thus enable the opening of an automated threshold at a distance.

**Great potential and maximum control.**  
The system can manage, through a REM unit, up to 128 thresholds with 124 sensors and 8 different types of warnings (traffic lights or signs).

**The PC30 serial interface.**  
It enables magnetic band or proximity-card management, and input of number codes through a keyboard selector of the S series.

**Many types of commands.**  
The RBM84 is designed to work with:  
> Transmitters of the Atomo rolling code and Tam series  
> Keypad selectors of the S series  
> LT00 magnetic card sensors  
> TSP00 proximity card sensors.

**The highest possible level of integration.**  
The 128 digital inputs via REM modules allow for a high number of auxiliary sensors to be connected for, anti-theft, fire prevention, and magnetic coils.



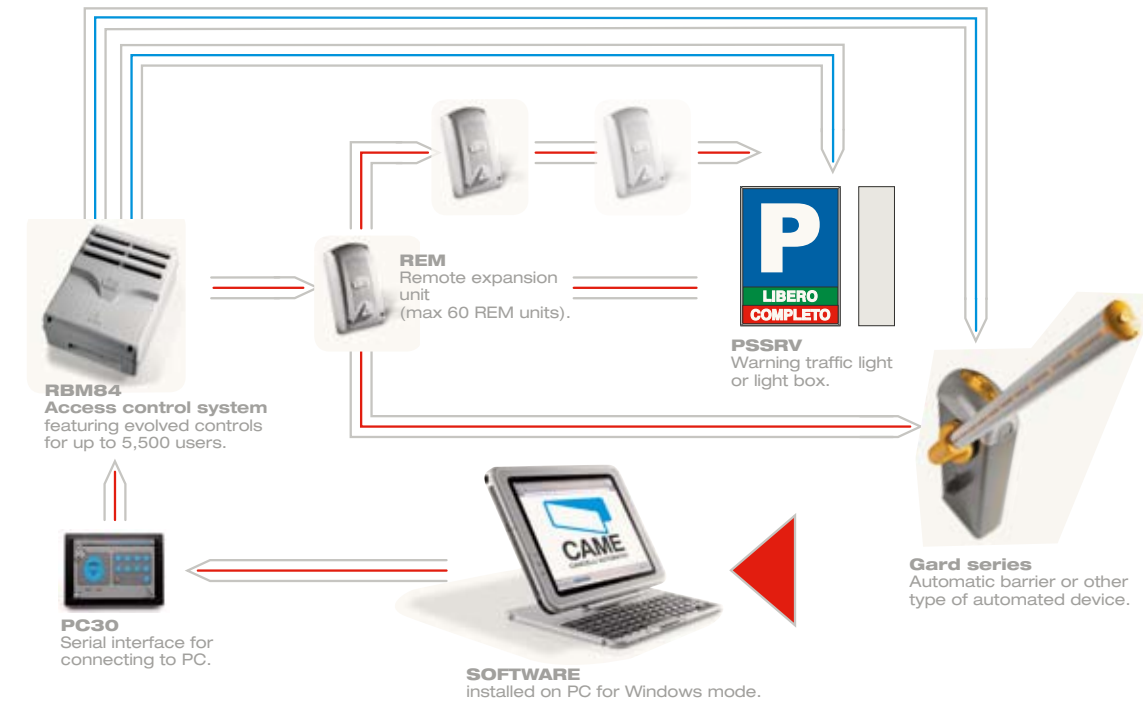
**The PSSRV - PSINS traffic light and light box.**  
They are indispensable tools when managing a private parking area and provide the users with information on parking space availability.

## The standard installation

The configuration modes and relative applications are many-fold and diversified depending on the specific operational needs. Following is an example scheme for a standard system, with or without REM\* unit.

Transmitters	Sensor and transponder card	Transponder sensor with radio transmitter	Transponder keychain and TAG for transmitters	Sensor and magnetic card	Coded keypad
serie <b>Atomo</b> serie <b>Tam</b>	<b>TSP00</b> <b>TST01-TST04</b>	<b>WA01</b>	<b>PCT-TAG</b>	<b>LT001-TST02</b>	serie <b>S</b>

\* LIGHT BLUE is without REM\* LIGHT RED is with REM



Hospital ward

Company parking

Dock



### Main software functions

- > Prepaid access
- > Prepaid time
- > Selected times
- > Card blocking from PC
- > Card insertion from PC
- > Parking function
- > Event printing
- > Anti-passback at entrance/exit
- > Timed anti-passback
- > Flow history
- > Instant event visualization
- > Direct automation system control
- > Differentiated user control (through groups)

### Special Functions

- > Opening and/or closing of facilities on pre-set dates
- > Automatic opening of facilities at pre-set times
- > Total block of the system from PC
- > Software access password
- > Synchronization of the state of the facilities