

access control



**proximan**



# proximan

## Automatic, controlled access: easier to use and to install

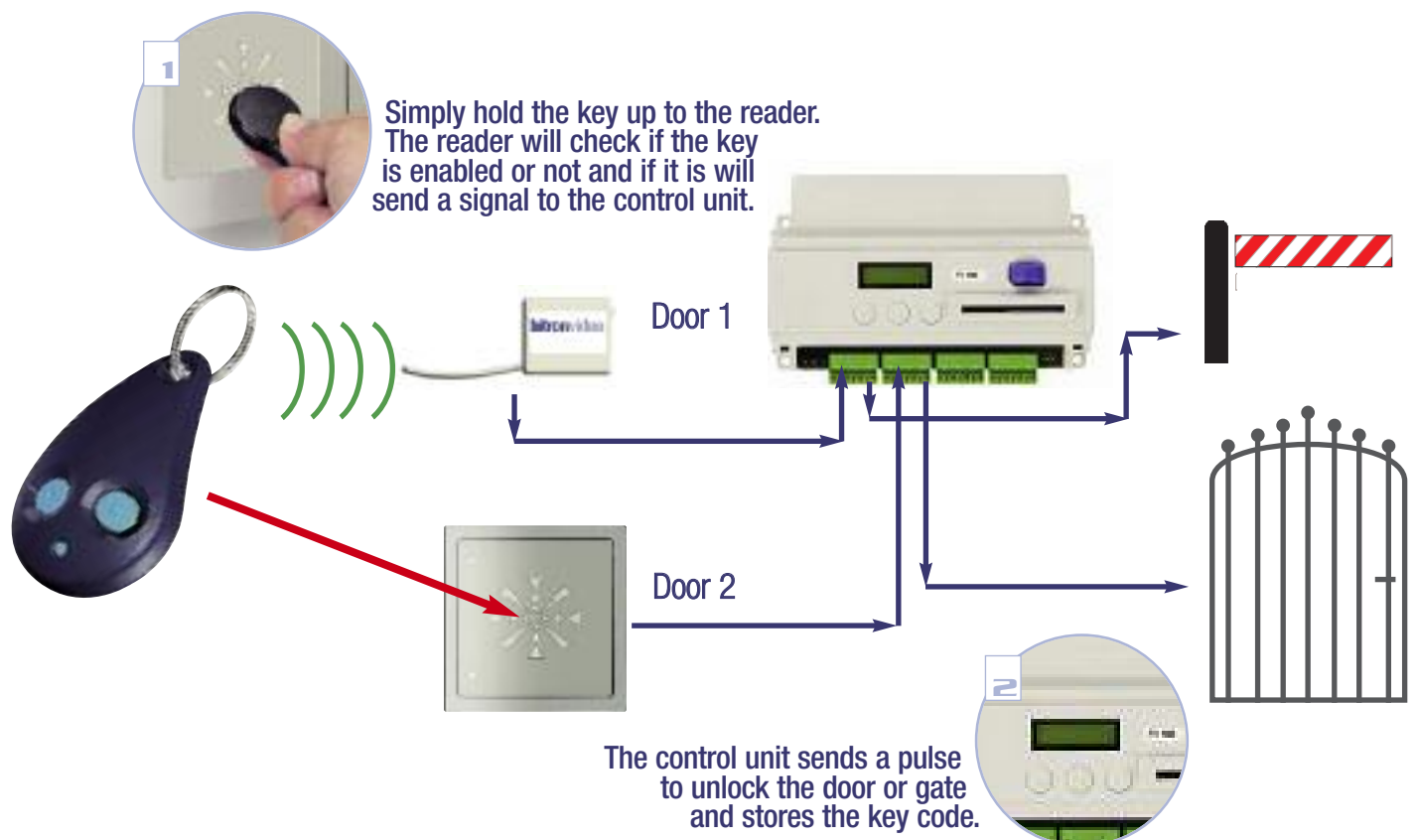
How about simply holding a key up to open a door? You can. And with Proximan it is even easier.

Proximan is the new Bitron Video access control system for opening electric locks without needing a mechanical key. The electronic keys contain the codes recognised by the system: **opening is easy (simply by means of a pulse generated when the key is held up to the reader or even by means of radio signals) and is also an extra security guarantee.**

The system consists of a proximity reader or radio transceiver, a control unit and a set of electronic keys: each to use, **Proximan is very flexible also with regards to installation. It is compatible with all Bitron Video systems and with all doorphone and video doorphone panels.**

Finally, Proximan is **very reliable: the system runs self-tests** and faults are shown on the control unit display.

### How to open a door the safe and easy way



**Faster:**  
the door will open without needing to fumble with the lock.

**Safer:** each key has a code and the reader checks if the key was previously used for entering but not exiting.

# Why choose Proximan?

## 1 Because it is convenient.

Enough fumbling with locks and keys in dark.

Simply hold the Proximan up to the reader: easy even when you are carrying boxes or sitting in your car.

## 2 Because it is handy.

The same key may be used to open several locks.

Fewer keys to carry, the same security as ever.

## 3 Because it is safe.

With a fast read response time and unique code ensures maximum security for sensitive entry points.

## 4 Because it is monitored.

Proximan **guards your security**: each key may have a different code authorised to open all or only some of the doors, anytime or at certain hours only (in this way a key can be safely given to the mailman or to cleaners). Proximan knows who is entering and who is exiting and **checks whether the key is actually who is holding the key up is actually authorised to enter or not.**

## And for installers ...

Because it is very easy to install. **The module is as easy to fit in the panel as ever.** Key programming is straightforward and digital.



## Maximum versatility. Maximum choice of panel designs.

Proximan may be used with Modular 3000 Evolution and Domular Classic Evolution panels housing access control modules capable of managing up to 5000 keys.

Proximan can even interface with other panels through the AV0151/007 reading head which may be combined with a signal amplifier and accommodated in any front panel.

# System components



## Reader or radio receiver

The proximity reader is provided with a sensitive pad: by holding an appropriately programmed key up to the sensor, the reader detects whether the key is enabled to unlock the door or not. A radio receiver may be installed instead of the proximity reader to open the lock using a radio transmitter (868MHz, 50m range in open air). The radio receiver is provided with radio signal detection LEDs for monitoring the area in which the system is installed for radio interferences which could compromise the correct operation of the system.

## Control unit

The heart of the system is the control unit: positioned in a different area with respect to the reader, it ensures security of the system by storing a record of all the activities performed by the system and unlocking the door (by closing the contact).

The control unit programming method is simple and fast on the panel directly or using a programming keypad.

The control unit is equipped with virtual memory which may be removed to transfer the data contained in it to another control unit or PC.

The control unit can work with a proximity reader or a radio receiver: this makes the system very flexible and allows to satisfy all customer needs.



**Three control unit models are available:**

- 1 for controlling one lock and managing up to 500 keys,
- 2 for controlling 2 locks and managing 5000 keys,
- 3 for controlling 4 locks and managing 5000 keys.

## Keys

The Proximan system keys are easy to manage: adding or removing one will not effect the operation of the other keys. This prevents unnecessary reprogramming of the control unit or of the remaining keys.

Above all, each key may be provided with different authorisations: in other words, it can be used to unlock certain doors and gates and not others.



**There are two different types of keys:**

- 1 proximity reader only;
- 2 twin-technology keys for working with the proximity reader and with the radio receiver.

# Memory and control

The Proximan security system control units can store all events (up to 30,000 events per month) concerned from 2 to 4 entrances.

**This means that information related to each event is detected and stored:**

- 1 **the key,**
- 2 **the building,**
- 3 **the time**
- 4 **the date**
- 5 **and the corresponding authorisations.**

One of the features of Proximan is the “**anti pass back**” feature which prevents a person from accessing a room a second time if no previous exits were recorded. For example: if a user renting a parking area gains access to the underground garage to park their car, they will have to exit the garage before they can gain access another time.



## Comparative table

		Mini control unit AV0151/009+AV0151/007	Remote control unit AV0151/005	Remote control unit AV0151/006
		Standalone	Standalone	Standalone
N. of entrances		1	2	4
Keys	Proximity AV0151/012	500	5,000	5,000
	Twin-technology AV0151/014	no	5,000	5,000
Readers	Proximity	yes	yes	yes
	Radio	no	yes	yes
Key access printout		no	yes	yes
Max. distance between control unit and reader module		20 cm	100 m	100 m

## Access Control

codice

SYSTEM COMPONENTS	
<b>AV0151/007</b>	Proximity key reading head. Vandalism-proof. For use in connection to mini control unit or amplifier and remote control unit.
<b>AV0151/008</b>	Signal amplifier. Install at max. 20 cm from reading head. For connection to remote unit (2-4 doors) at max. 100 m. No power required.
<b>AV0151/009</b>	Mini control unit. For use with 500 key reading head. 12 Vac power.
<b>AV0151/005</b>	Central remote control unit for 2 doors. With key and extractable connection terminals. Capable of managing up to 5000 keys. 12 Vac power.
<b>AV0151/006</b>	Central remote control unit for 4 doors. With key and extractable connection terminals. Capable of managing up to 5000 keys. 12 Vac power.
<b>AV0151/010</b>	System programmer. Accessory control unit data transfer and maintenance, facilitates programming procedures. Battery or USB powered.
<b>AV0151/011</b>	Wire for connecting control unit to PC. Includes mini control unit management software.
<b>AV0151/012</b>	Proximity key with univocal code. 10 piece box.
<b>AV0151/013</b>	Radio receiver for access control. Suitable for receiving radio controls from twin technology key. Powered by 2 or 4 door control unit.
<b>AV0151/014</b>	Dual-technology key. Contains a proximity reading circuit and a wireless transmitter for use with wireless receiver AV0151/013. Battery powered.
<b>AV0151/015</b>	Pre-cut rod for colour-coding proximity keys. (Box contains 12 pieces- 2 per colour).

- 1 AV0151/003 - AV0151/004
- 2 AV0151/005 - AV0151/006
- 3 AV0151/007
- 4 AV0151/009
- 5 AV0151/012
- 6 AV0151/017

CLASSIC EVOLUTION	
<b>AV0151/001</b>	Domular Classic Evolution panel access control module. With vandal-proof reading head and mini control unit. For monitoring 1 door and 500 keys. 12 Vac power.
<b>AV0151/002</b>	Domular Classic Evolution panel access control module. With vandal-proof reading head and amplifier for connecting to remote control unit (2-4 doors). 12 Vac power.
<b>AV0151/016</b>	"SLIM" module: Domular Classic Evolution panel access control module. With proximity reader and 2 LEDs. For connection to remote unit (2-4 doors) at max. 100 m. 12 Vac power.

DOMULAR 3000 EVOLUTION MODULES	
<b>AV0151/003</b>	Domular 3000 Evolution panel access control module. With vandal-proof reading head and mini control unit. For monitoring 1 door and 500 keys. 12 Vac power.
<b>AV0151/003IX</b>	Domular 3000 Evolution INOX panel access control module. With vandal-proof reading head and mini control unit. For monitoring 1 door and 500 keys. 12 Vac power.
<b>AV0151/004</b>	Domular 3000 Evolution panel access control module. With vandal-proof reading head and amplifier for connecting to remote control unit (2-4 doors). 12 Vac power.
<b>AV0151/004IX</b>	Domular 3000 Evolution INOX panel access control module. With vandal-proof reading head and amplifier for connecting to remote control unit (2-4 doors). 12 Vac power.
<b>AV0151/017</b>	"SLIM" module: Domular 3000 Evolution panel access control module. With proximity reader and 2 LEDs. For connection to remote unit (2-4 doors) at max. 100 m. 12 Vac power.
<b>AV0151/017IX</b>	"SLIM" module: Domular 3000 Evolution INOX panel access control module. With proximity reader and 2 LEDs. For connection to remote unit (2-4 doors) at max. 100 m. 12 Vac power.

