

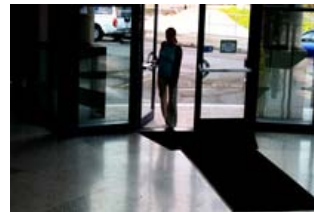
## TECHNICAL DATA SHEET

# MVD83SPX/12

Pixim Ultra High Resolution Day/Night WDR Micro Vandal Dome Camera



Powered by  
**PIXIM**<sup>®</sup>  
**SEAWOLF**



CCD



PIXIM

### KEY FEATURES

- 1/3" PIXIM Seawolf CMOS Sensor
- Vandal Resistant Aluminium Housing
- Clear Polycarbonate Glass
- Ultra High Resolution, 690 HTVL
- Vertical Resolution, 460+ VTVL
- Digital Day/Night
- 3D Motion Adaptive Digital Noise Reduction
- Wide Dynamic Range (WDR)
- 4mm Fixed Iris Lens (F1.2)
- O.S.D. Menu
- Selectable Gain Control
- Selectable White Balance
- Back Light Compensation
- Privacy Masking (12 Zones)
- Motion Detection
- 3-Axis Gimbal
- Weatherproof (IP66)
- DC 12V

### ORDERING INFORMATION

MVD83SPX/12      DDN Micro Vandal Dome,  
690 HTVL, 4mm Fixed Iris Lens

Pixim provides a number of technical improvements in picture quality for viewing areas of extreme dynamic lighting conditions. The Pixim technology overcomes over exposure problems against strong back-light situations. As each pixel acts as a camera, the picture taken by one pixel does not affect the picture quality captured by other pixels. Based on this technology, the camera delivers a very high quality, high resolution and very accurate picture. Facial & object recognition in a variety of light conditions such as doorways, windows, shadows, high-contrast environment and outdoors with strong light reflections are easily achievable with the Pixim powered cameras

## TECHNICAL DATA SHEET

### TECHNICAL SPECIFICATION

Model Number	MVD83SPX
Image Sensor	1/3" PIXIM Seawolf CMOS Sensor
Horizontal Resolution	690 HTVL (Col), 800 HTVL (Mono)
Vertical Resolution	460+ VTVL
Signal Processing	17-bit Digital Signal Processing
Transfer Format	Progressive with Segmented Frames
Lens	4mm Fixed Iris Lens(F1.2)
Angle of View	85°
Sensitivity (F1.2)	0.1 Lux (Col), 0.001 Lux (Mono)
Digital Zoom	4 x Zoom
Effective Pixels (H x V)	758 x 540
Electronic Shutter Speed	1/30, 720 Sec
Scanning System	2:1 Interlace
S/N Ratio	>50dB
Synchronisation	INTERNAL
Frequency	Horizontal: 15.625KHz Vertical: 50.00Hz
Video Output	1.0Vp-p~75Ω
Day / Night	COLOUR / AUTO / B&W
O.S.D.	YES, BUILT-IN
Gain Control	OFF / LOW / MIDDLE / HIGH
White Balance	ATW / AWB / INDOOR / OUTDOOR / MANUAL
Back Light Compensation	ON / OFF
3D-DNR	ON / OFF
Sens-Up	AUTO / OFF (Selectable limit x2 ~ x32)
WDR	LOW / MIDDLE / HIGH / USER
Privacy Masking	ON / OFF (12 Programmable Zones)
Motion Detection	ON / OFF (4 Zones)
UTP	NO
Flip	HORIZONTAL / VERTICAL
IP Rating	IP66
Operating Conditions	Temperature: -10°C ~ +50°C, Humidity: 95% RH
Power Supply	DC 12V (±10%)
Power Consumption	Max. 150mA
Dimensions (D x H)	80 x 60.5 mm
Weight	230g

Features and specifications are subject to change for further improvement without any notice