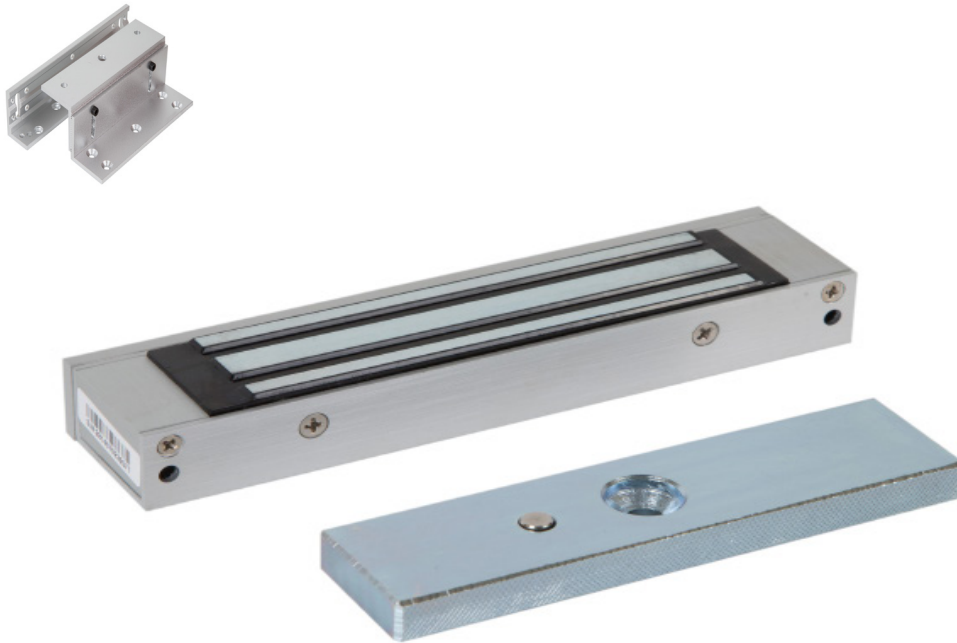


Electronic Locking Magnet Range



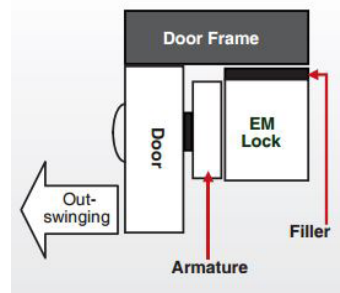
Magnet Range



Micro Magnetic Lock (300lb)

Technical specifications

- Aluminium housing.
- 12VDC @300mA
- 180kg (300lb) holding force.
- Built in surge protection.



FEATURES

- Slim line micro magnet.
- Clean and compact design in aluminium.
- No residual magnetism.

Suitable brackets:

- BK300ZL.

ML300	170x40x21 (mm)	Magnetic Lock 300lb / 180kg	1.06kg (Boxed) / 610g (Unboxed)
Armature	130x33x11 (mm)	Metal armature plate	352g (Unboxed)

Other items in the RGL range.

