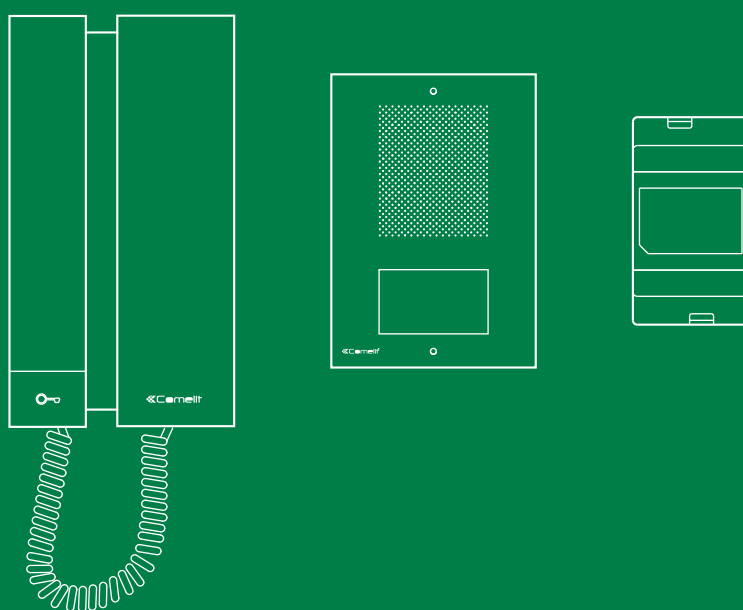


EN

TECHNICAL  
MANUAL



Single-family Kit Art. KAE5061

 **Comelit**<sup>®</sup>  
Passion. Technology. Design.

# Warning

## Intended use

This Comelit product was designed for use in the creation of audio and video communication systems in residential, commercial or industrial settings and in public buildings or buildings used by the public.

## Installation

All activities connected to the installation of Comelit products must be carried out by qualified technical personnel, with careful observation of the indications provided in the Manuals / Instruction sheets supplied with those products.

## Wires

Cut off the power supply before carrying out any maintenance procedures.

Use wires with a cross-section suited to the distances involved, observing the instructions provided in the system manual.

We advise against running the system wires through the same duct as the power cables (230V or higher).

## Safe usage

To ensure Comelit products are used safely:

- carefully observe the indications provided in the Manuals / Instruction sheets
- make sure the system created using Comelit products has not been tampered with / damaged.

## Maintenance

Comelit products do not require maintenance aside from routine cleaning, which should be carried out in accordance with the indications provided in the Manuals / Instruction sheets.

Any repair work must be carried out

- for the products themselves, exclusively by **Comelit Group S.p.A.**,
- for systems, by qualified technical personnel.

## Disclaimer

**Comelit Group S.p.A.** does not assume any responsibility for

- any usage other than the intended use
- non-observance of the indications and warnings contained in this Manual / Instruction sheet.

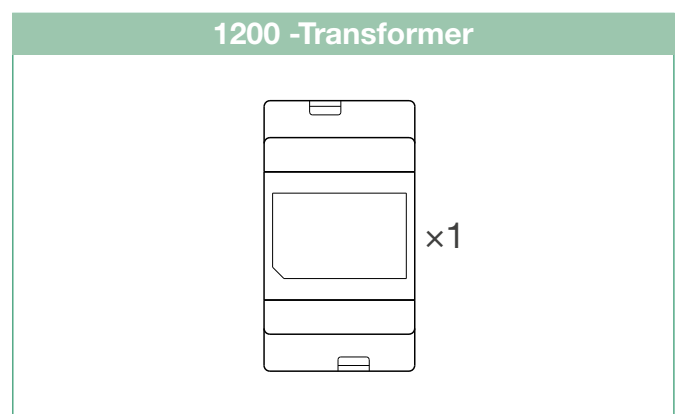
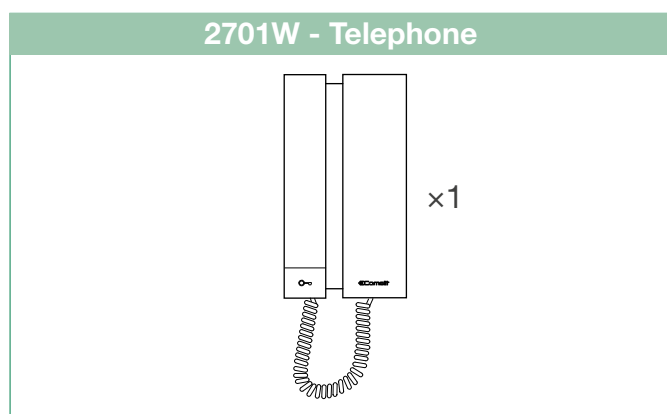
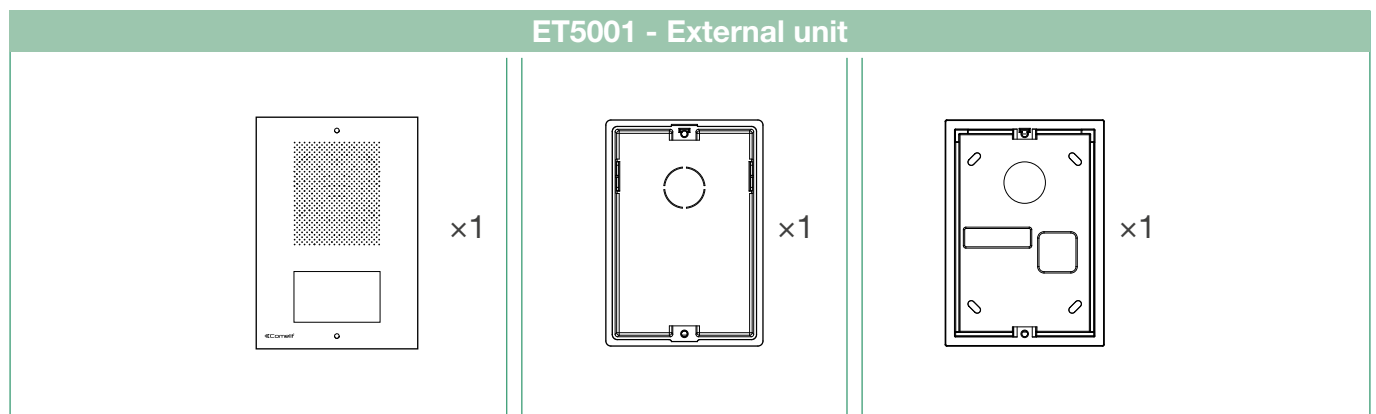
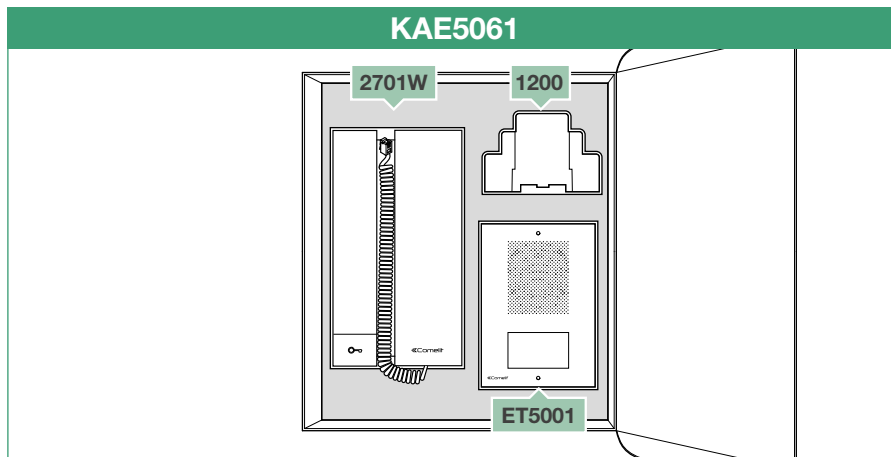
**Comelit Group S.p.A.** nonetheless reserves the right to change the information provided in this Manual / Instruction sheet at any time and without prior notice.

# Table of contents

Warning .....	2
Package Contents .....	3
Transformer Art. 1200.....	4
Description .....	4
External unit Art. ET5001 .....	5
Description .....	5
Installation .....	6
Replacing the nameplate holders .....	6
Internal unit Art. 2701W.....	7
Description .....	7
Installation .....	8
Operating distances and standard diagram .....	9
Wiring diagram for standard system and 1 additional door-entry phone connection variant .....	9
Wiring diagram with second external unit .....	9
Operating distances.....	10

# Package Contents

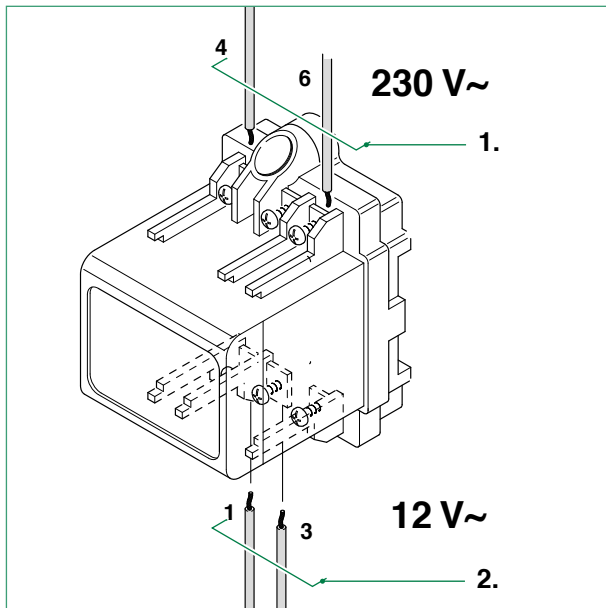
This manual includes information regarding system configuration and customisation which may be perceived as necessary by the installer.



# Transformer Art. 1200

## Description

Transformer with 230V primary, 12V AC / 15 VA secondary winding for continuous use. Dimensions: 53x95x65 mm (3 DIN modules).



1. 230 V digital input.

2. Secondary 12 V AC output.



**Disconnect the power supply before carrying out any maintenance procedures.**

**The electrical system of the building must be fitted with an omnipolar mains switch with a contact opening of at least 3 mm, which is capable of isolating the power supply of the device.**

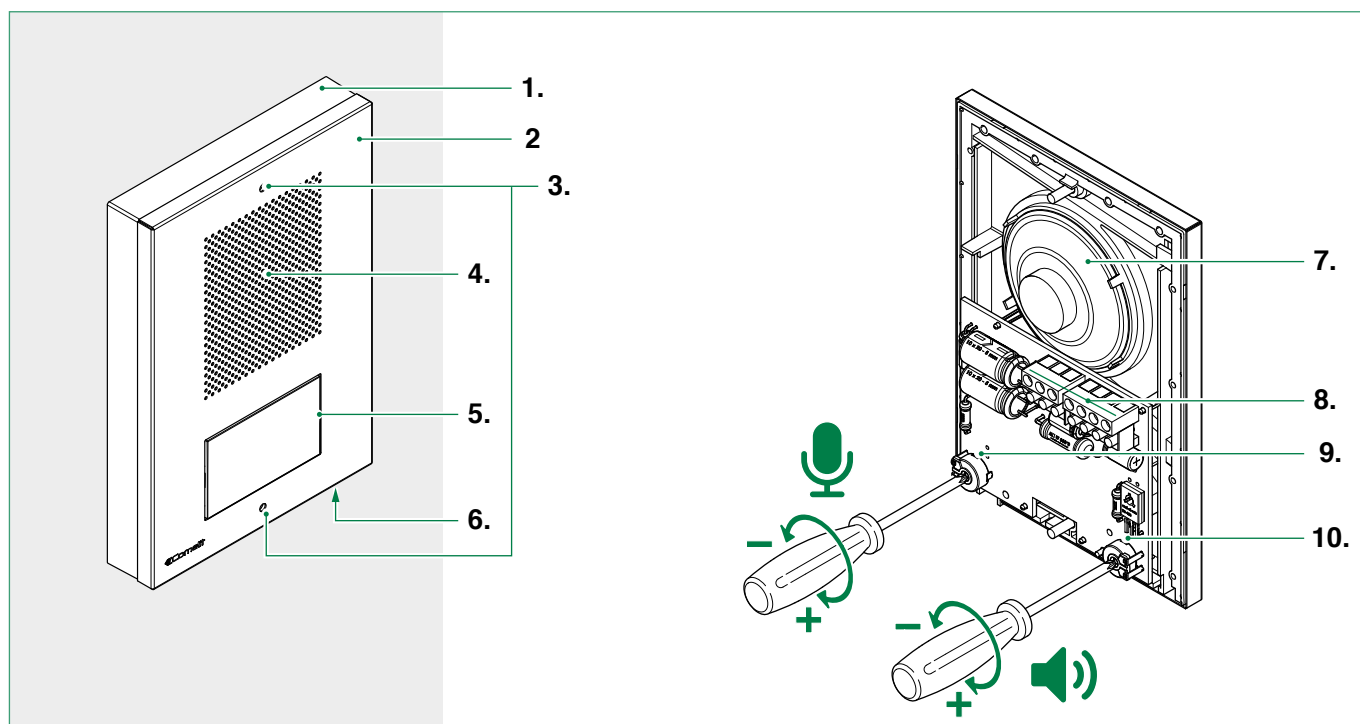
**Place the protection back over the terminals and close the inspection door after every procedure.**

# External unit Art. ET5001

## Description

External unit complete with 1 call button, 1 wall bracket and 1 flush-mounted box.

Dimensions 95×135×26.5 mm (including wall bracket).



**1.** Surface-mounted wall bracket Art. ET9160. A flush-mounted box Art. ET9150 is also available.

**2.** Stainless steel front faceplate.

**3.** Faceplate fixing screw holes.

**4.** Speaker.

**5.** Call button.

**6.** Microphone.

**7.** Speaker.

**8.** Terminal block for connection:

**S1** Electronic call signal output

**4** Negative

**3** Loudspeaker input

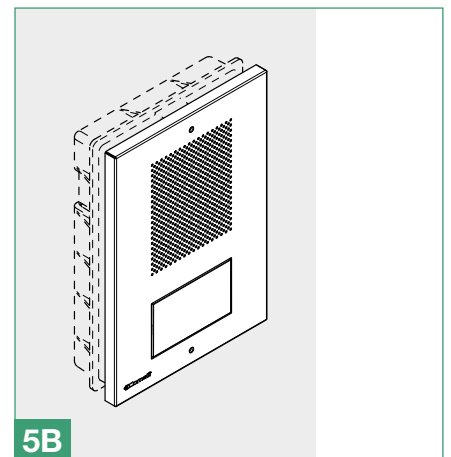
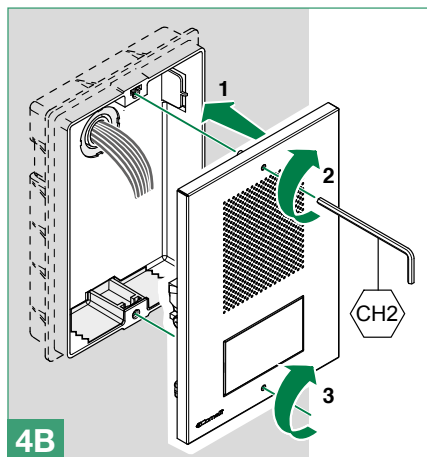
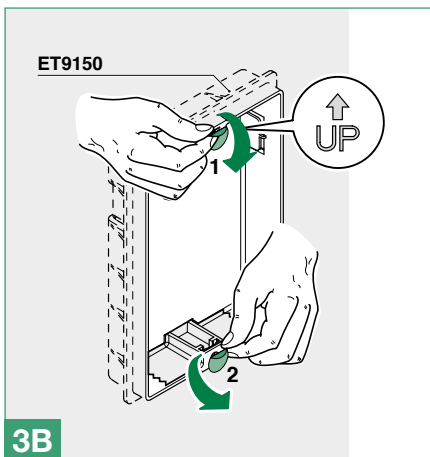
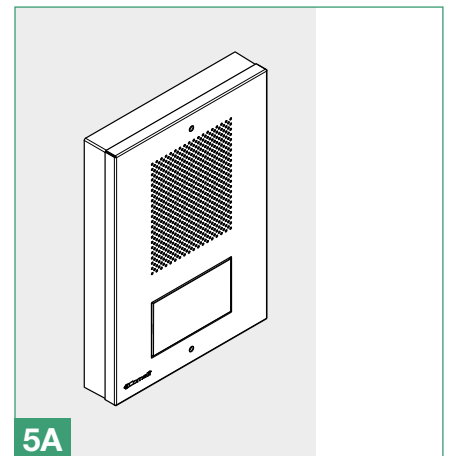
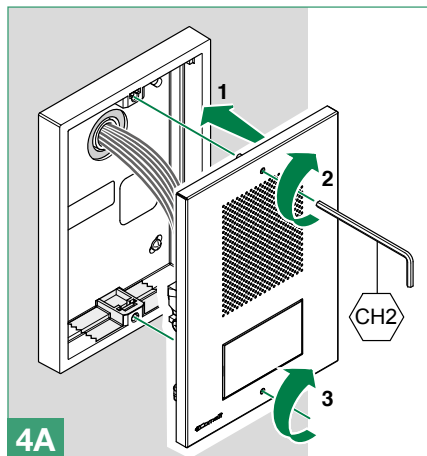
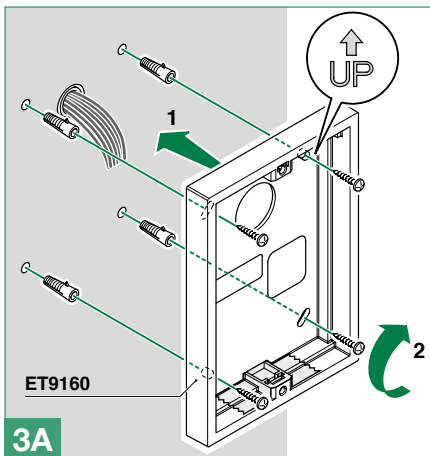
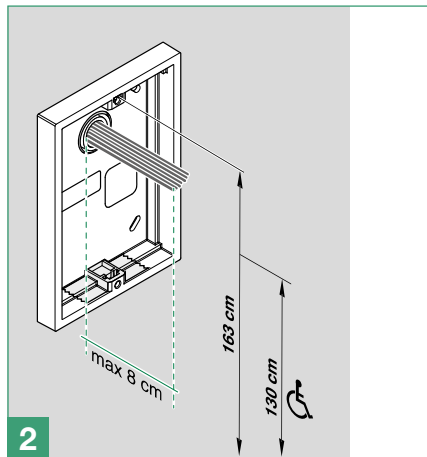
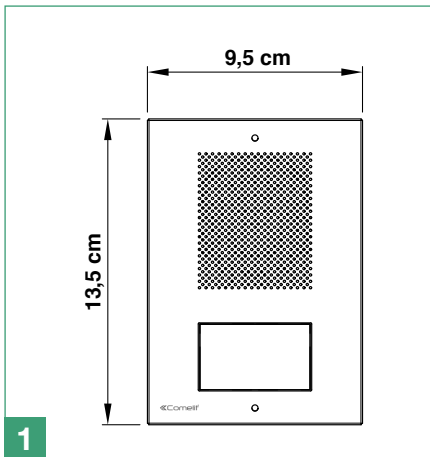
**2** Microphone output

~\* 12V AC power supply terminals

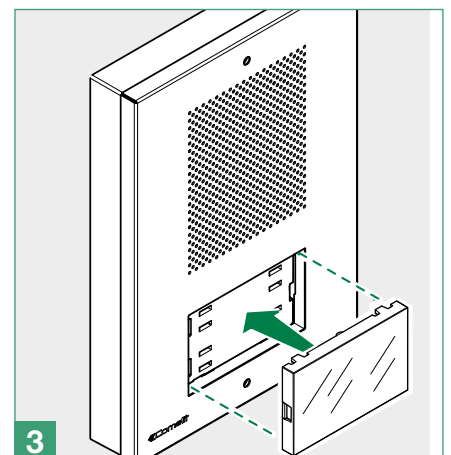
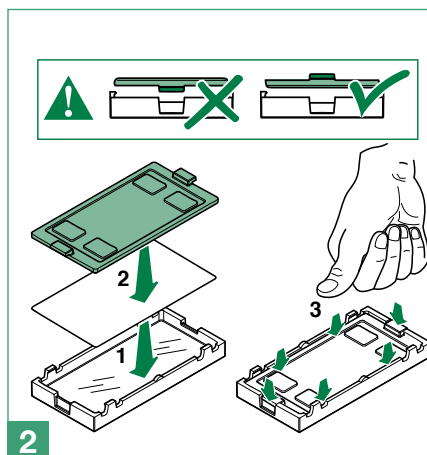
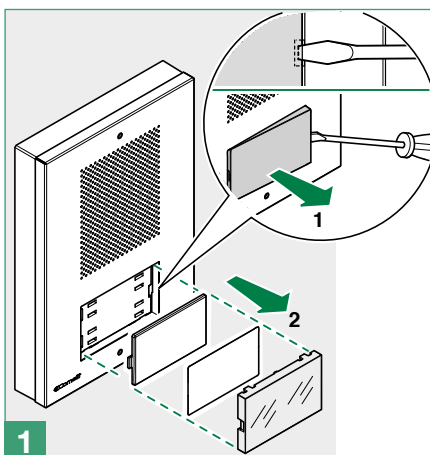
**9. TM2** Microphone volume adjustment trimmer.

**10. TM1** Loudspeaker volume adjustment trimmer.

# Installation



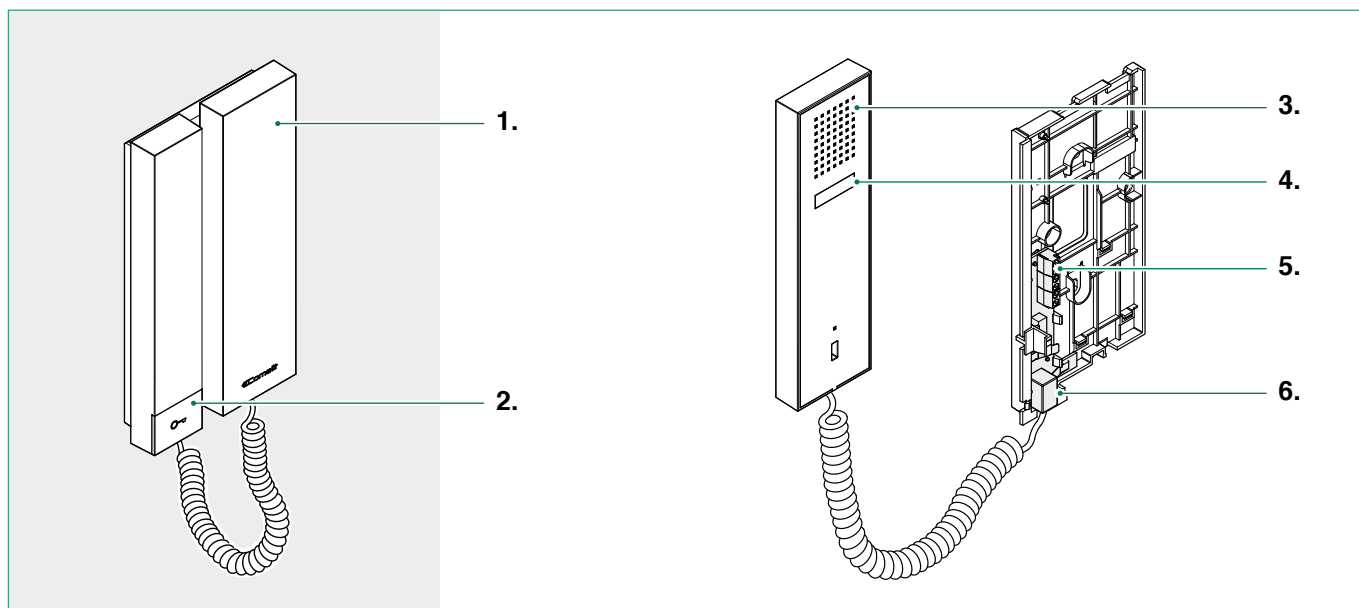
## Replacing the nameplate holders



# Internal unit Art. 2701W

## Description

Audio internal unit complete with 1 key button. Dimensions 105×190×28 mm.



1. Handset.

2. Key button.

3. Speaker.

4. Audio hook.

 **Do not press and hold the audio hook while the handset is lifted**

5. Terminal block:

**S** Electronic call signal input

**2** Loudspeaker input

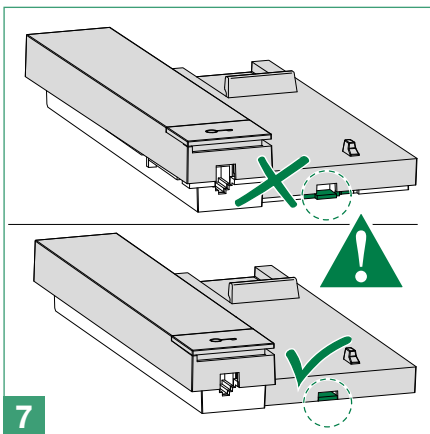
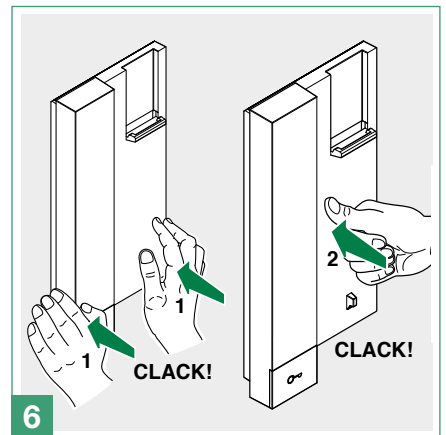
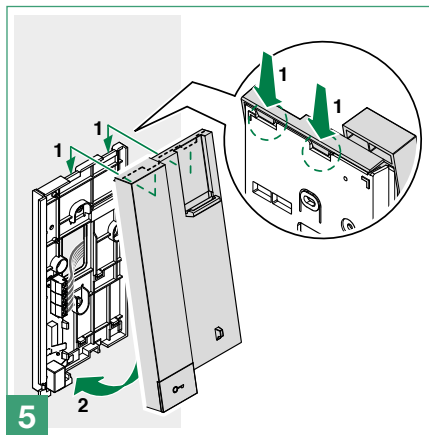
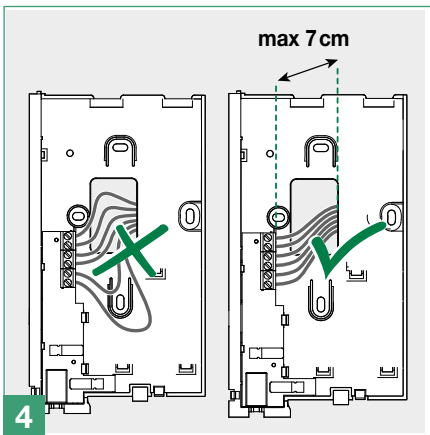
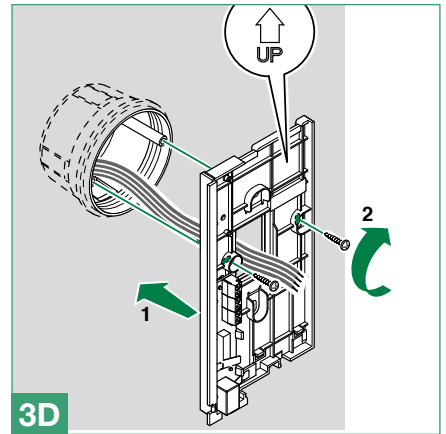
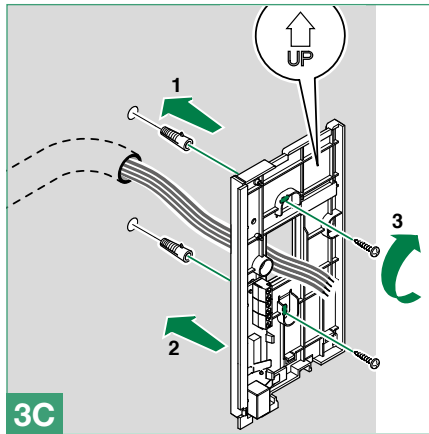
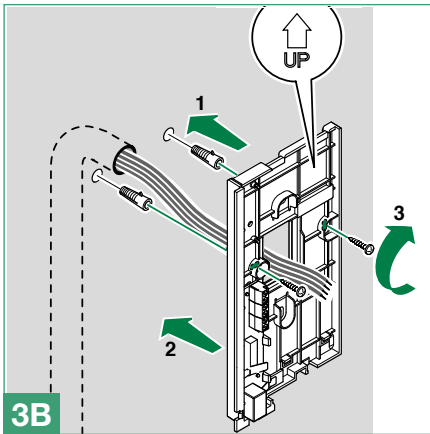
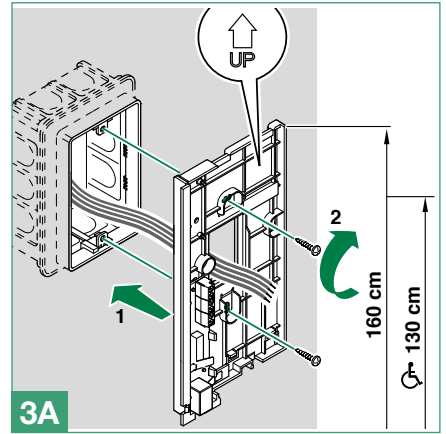
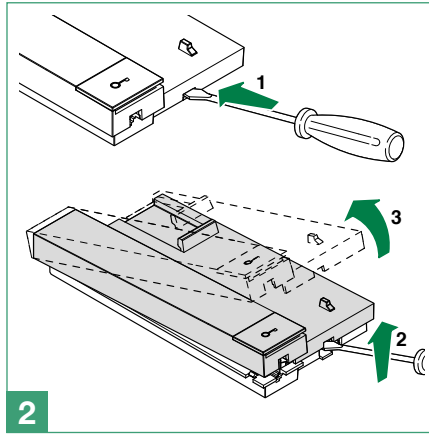
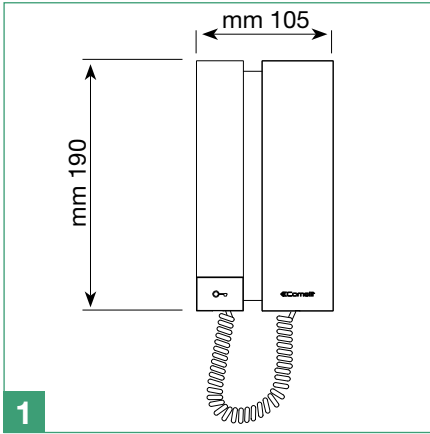
**3** Microphone output

**4** Negative

**P1** Terminal for key button

6. Handset connector.

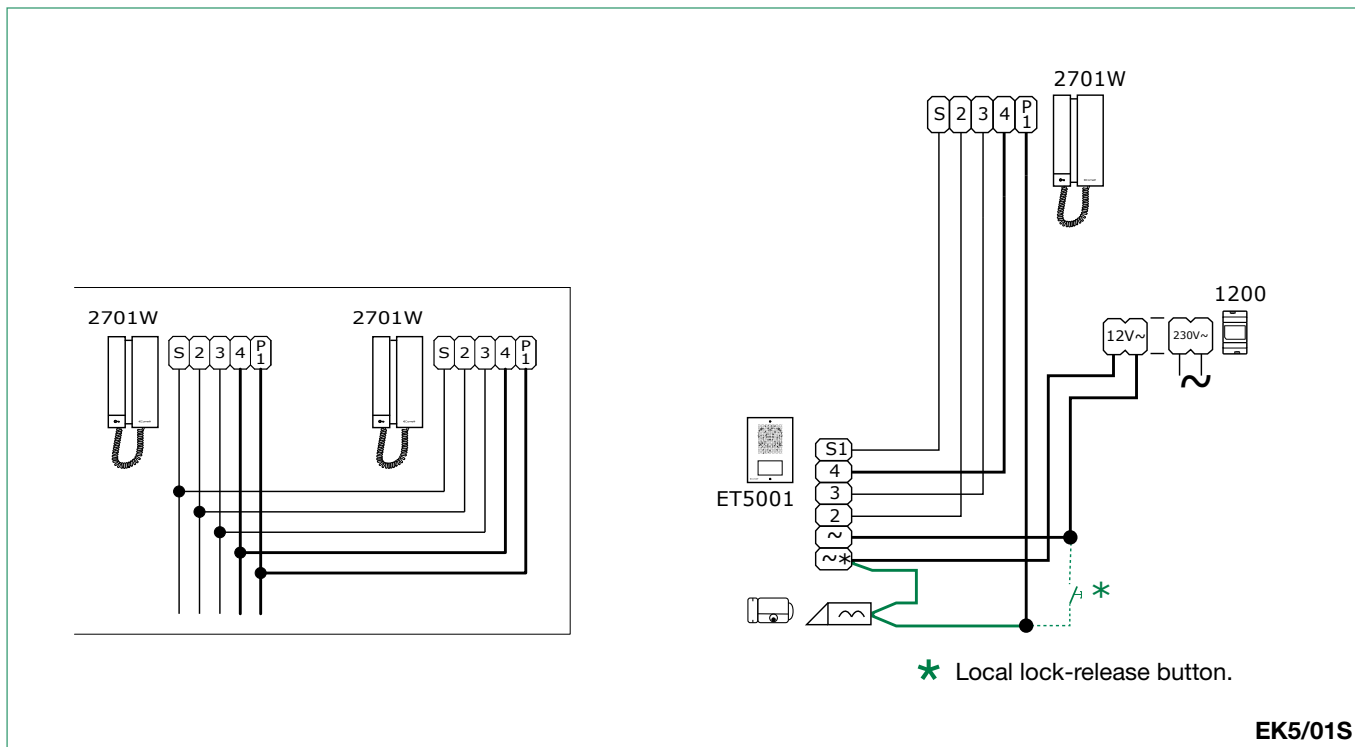
# Installation



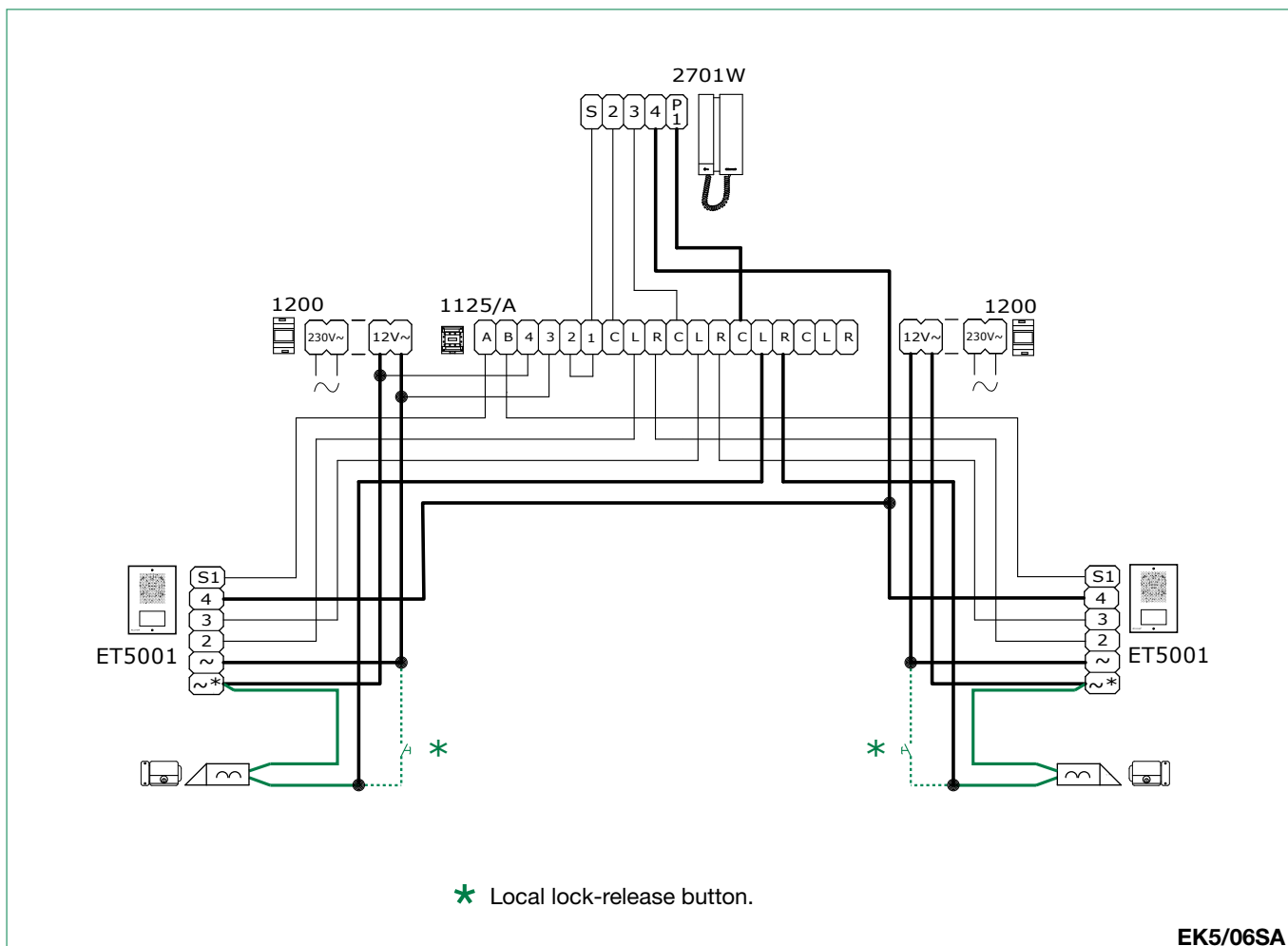


# Operating distances and standard diagram

## Wiring diagram for standard system and 1 additional door-entry phone connection variant



## Wiring diagram with second external unit



## Operating distances

<u>1 mm<sup>2</sup></u>	<u>1,5 mm<sup>2</sup></u>	<u>1,5 mm<sup>2</sup></u>
<b>200 m</b>	<b>200 m</b>	<b>80 m</b>

<u>0,8 mm<sup>2</sup></u>	<u>1 mm<sup>2</sup></u>	<u>1 mm<sup>2</sup></u>
<b>150 m</b>	<b>150 m</b>	<b>30 m</b>

<u>0,5 mm<sup>2</sup></u>	<u>0,8 mm<sup>2</sup></u>	<u>0,8 mm<sup>2</sup></u>
<b>50 m</b>	<b>50 m</b>	<b>10 m</b>

CERTIFIED MANAGEMENT SYSTEMS



[www.comelitgroup.com](http://www.comelitgroup.com)

Via Don Arrigoni, 5 - 24020 Rovetta (BG) - Italy

2<sup>nd</sup> edition - 02/2018  
cod. 2G40002114