

IXP220 SOFTWARE

w w w . i m p r o . n e t



impro technologies®
ACCESS CONTROL

PRODUCT INFORMATION



IXP220

IXP220

VERSION 1.80

ELEVATOR CONTROL

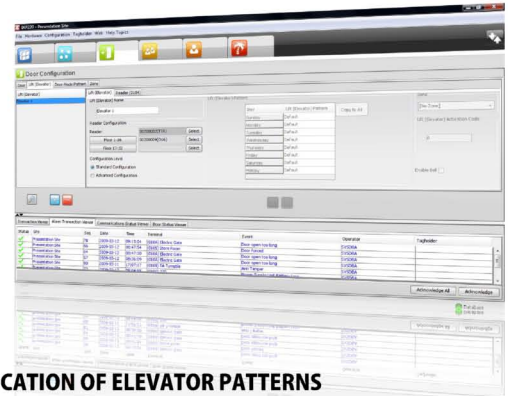
This new feature now offers users added security by controlling Lift (Elevator) access to various floors in a building so that a Tagholder can only select the floors they have access to. The IXP220 Controller supports a maximum of 8 Lifts (Elevators) with a maximum of 32 floors per Lift (Elevator) using O16 (Output 16) Devices.

This new addition to the IXP220 system now means buildings that might not be large enough to warrant the need for a top of the range Access Control system, yet still need to incorporate Elevator Control for several floors, can purchase a simple Unlock from the Impro PSU website and upgrade their IXP220 system. Access rights can then be assigned to Tagholder groups or individuals, and in turn, determine who has access to specific floors. Once access rights have been assigned, the user presents his Tag to the Reader and only those floors which he has access rights to, will light up accordingly. Multiple Elevator Groups can also be setup where an Elevator Group can be assigned to each access description.

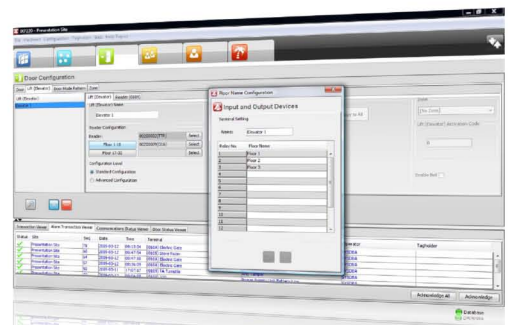
For a multiple floor site that has various management levels or departments that specifically need monitoring and access control to protect staff and information, elevator control is a must. However, Impro's IXP220 system offers an easy solution to an otherwise complex issue, providing complete elevator control and management. The IXP220 Access Control – effortless, scalable, secure.

KEY FEATURES:

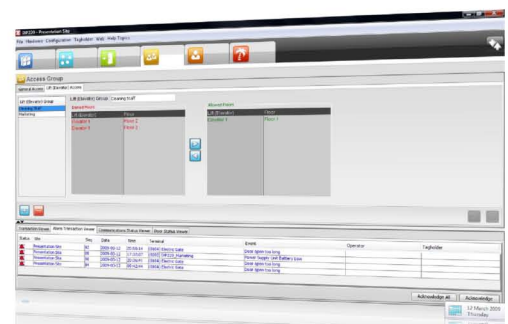
- Up to 32 floors.
- 8 Elevators per Controller.
- Upgrade from 16 floors to 32 (IXP200 to IXP220).
- Simple to install – Purchase Unlock codes plus Output16 Device.
- Redesigned Access Group configuration.



ALLOCATION OF ELEVATOR PATTERNS TO VARIOUS ELEVATORS



EACH ELEVATOR (LIFT) FLOOR CAN BE NAMED



ALLOCATION OF ACCESS GROUPS TO VARIOUS FLOORS