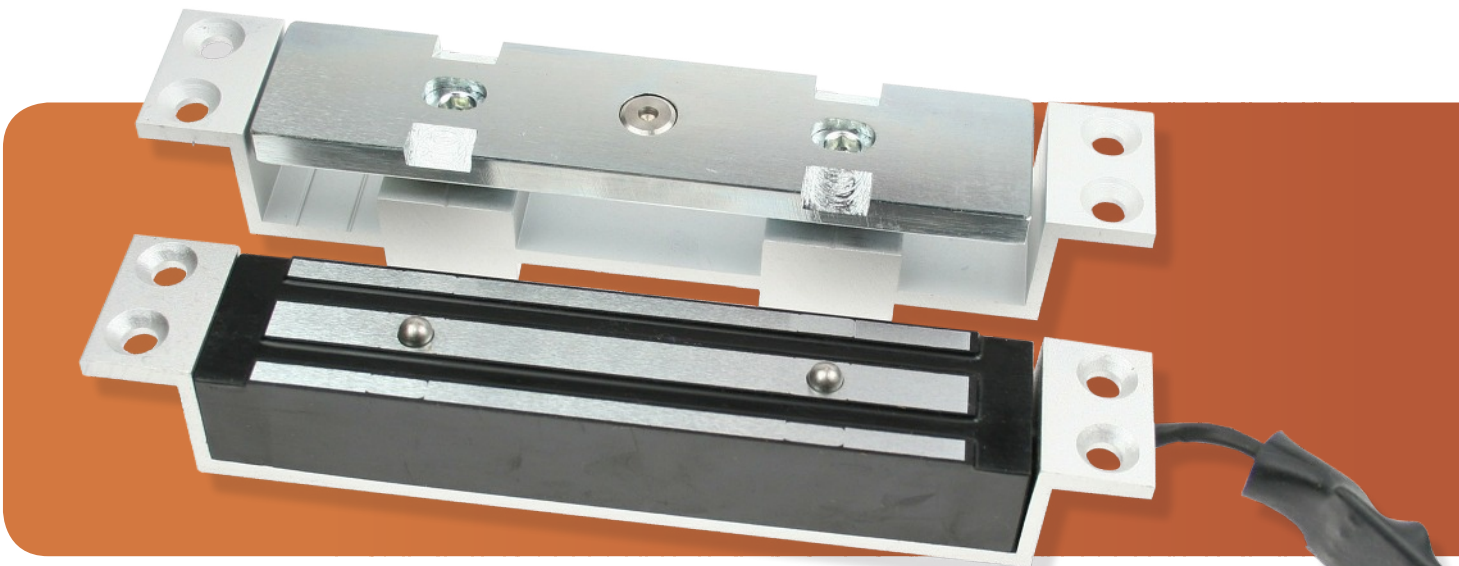


Shear Magnets

GS200

- Dual voltage: 12 or 24Vdc
- Brushed stainless steel
- Magnetic bond sensor monitor output remotely monitors the door lock or unlock status. (N.C. Output-Door opened; N.O. Output-door closed) (GS-200M)(SPDT rated 3A at 30Vdc)
- Current draw: 500mA at 12Vdc
250mA at 24Vdc (at temperature 20°C)
- Operating temperature: -10 to 55°C (14 to 131°F)
- Humidity: 0 to 95% non-condensing
- Lock's surface temperature: Current temperature ±20% (when power is on)
- Holding force: Up to 1500lbs (680Kg) in shear
- Weight: 2.0kg (approx)



DIMENSIONS	LENGTH	WIDTH	DEPTH
Magnet	184	30	27
Armature Plate	184	30	43

VARIATIONS	
GS200	

Unmonitored
All dimensions in mm
GS200M

Monitored

OPTIONS



GS200SH

- Surface Mount Housing for GS200 Series
- SAA Finish

GS200GH

- Glass Mount Kit for use with GS200SH
- Adjustable 14mm down to 10mm
- SAA Finish
- Size 182 X 48