

GC83SPX / GC83SPXV

Pixim Ultra High Resolution Digital Day/Night PCB Camera



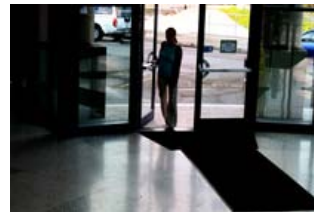
GC83SPX



GC83SPXV



Powered by
PIXIM[®]
SEAWOLF



CCD



PIXIM

KEY FEATURES

- 1/3" Pixim Seawolf CMOS Sensor
- Ultra High Resolution, 690 HTVL
- Vertical Resolution, 460+ VTVL
- Digital Day/Night
- 3D Motion Adaptive Digital Noise Reduction
- Wide Dynamic Range (WDR)
- 2.8-10.5mm DC AIVF Lens (GC83SPXV)
- 4mm Fixed Lens (GC83SPX)
- O.S.D. Menu
- Selectable Gain Control
- Selectable White Balance
- Privacy Masking (12 Zones)

ORDERING INFORMATION

GC83SPX DDN PCB Camera, 690 HTVL,
4mm Fixed Lens

GC83SPXV DDN PCB Camera, 690 HTVL,
2.8 - 10.5mm DC AIVF Lens

Pixim provides a number of technical improvements in picture quality for viewing areas of extreme dynamic lighting conditions. The Pixim technology overcomes over exposure problems against strong back-light situations. As each pixel acts as a camera, the picture taken by one pixel does not affect the picture quality captured by other pixels. Based on this technology, the camera delivers a very high quality, high resolution and very accurate picture. Facial & object recognition in a variety of light conditions such as doorways, windows, shadows, high-contrast environment and outdoors with strong light reflections are easily achievable with the Pixim powered cameras.

TECHNICAL DATA SHEET

TECHNICAL SPECIFICATION

Model Number	GC83SPX	GC83SPXV
Image Sensor	1/3" PIXIM Seawolf CMOS Sensor	
Horizontal Resolution (Effective)	690 HTVL (Col), 800 HTVL (Mono)	
Vertical Resolution	460+ VTVL	
Signal Processing	17-bit Digital Signal Processing	
Transfer Format	Progressive with Segmented Frames	
Sensitivity (F1.2)	0.1 Lux (Col), 0.001 Lux (Mono)	
Lens	4mm Fixed	2.8-10.5mm DC AI Varifocal (F1.2)
Angle of View	80°	H: 100.8(Wide)~28.5°(Tele) / V: 73.7°(Wide)~21.4°(Tele)
Digital Zoom	4 x Zoom	
Effective Pixels (H x V)	758 x 540	
Electronic Shutter Speed	1/50~1/100,000 Sec	
Scanning System	2:1 Interlace	
Synchronisation	INT/LL Selectable	
Frequency	Horizontal: 15.625KHz Vertical: 50.00Hz	
Video Output	1.0Vp-p~75Ω	
S/N Ratio	>50dB (AGC Off)	
Day / Night	COLOUR / AUTO / B&W	
3D-DNR	ON / OFF	
Sens-Up	AUTO / OFF (Selectable limit x2 ~ x32)	
WDR	LOW / NORMAL / MIDDLE / HIGH (Max 120db)	
Gain Control	AUTO / HIGH / LOW / OFF SELECTABLE	
White Balance	ATW / AWB / INDOOR / OUTDOOR / MANUAL	
Back Light Compensation	BLC / OFF SELECTABLE	
Motion Detection	ON / OFF	
Privacy Zones	ON / OFF (12 Programmable Zones)	
Operating Conditions	Temperature: -10°C ~ +50°C Humidity: 30 ~ 90% RH	
Power Supply	DC 12V (±10%)	
Power Consumption	160mA	
Dimensions (W x H)	32 x 32 mm	42 x 42 mm
Weight	44g	66g

Features and specifications are subject to change for further improvement without any notice