

TECHNICAL DATA SHEET

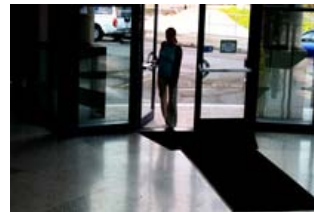
GB83TSPXIR

Pixim Ultra High Resolution True Day/Night WDR Bullet Style Camera



690
HTVL
Effective

Powered by
PIXIM[®]
SEAWOLF



CCD



PIXIM

KEY FEATURES

- 1/3" PIXIM Seawolf CMOS Sensor
- Ultra High Resolution, 690 HTVL
- Vertical Resolution, 460+ VTVL
- Mechanical IR Cut-Filter
- 3D Motion Adaptive Digital Noise Reduction
- Wide Dynamic Range (WDR)
- 2.8-10.5mm DC AIVF Lens
- 30x IR LEDs (Illuminates Up To 20 Metres*)
- Focus, Viewing Angle & O.S.D. Adjustment
- Selectable Gain Control
- Selectable White Balance
- Selectable Back Light Compensation
- Privacy Masking (12 Zones)
- Motion Detection
- Sunshield & Fully Cable Managed Bracket
- Temperature Balance Valve (Prevents the Risk of Condensation)
- RS-485 Communication
- Built in UTP
- 3-Axis Gimbal
- Weatherproof (IP66)
- Dual Voltage

ORDERING INFORMATION

GB83TSPXIR TDN Bullet Style Camera,
690 HTVL, 2.8-10.5mm DC AIVF Lens,
UTP, RS-485

Pixim provides a number of technical improvements in picture quality for viewing areas of extreme dynamic lighting conditions. The Pixim technology overcomes over exposure problems against strong back-light situations. As each pixel acts as a camera, the picture taken by one pixel does not affect the picture quality captured by other pixels. Based on this technology, the camera delivers a very high quality, high resolution and very accurate picture. Facial & object recognition in a variety of light conditions such as doorways, windows, shadows, high-contrast environment and outdoors with strong light reflections are easily achievable with the Pixim powered cameras

TECHNICAL DATA SHEET

TECHNICAL SPECIFICATION

| | |
|---|--|
| Model Number | GB83TSPXIR |
| Image Sensor | 1/3" PIXIM Seawolf CMOS Sensor |
| Horizontal Resolution | 690 HTVL (Col), 800 HTVL (Mono) |
| Vertical Resolution | 460+ VTVL |
| Signal Processing | 17-bit Digital Signal Processing |
| Transfer Format | Progressive with Segmented Frames |
| Lens | 2.8-10.5mm DC AI Varifocal Lens (F1.2) |
| Angle of View | H : 100.8°(Wide)~28.5°(Tele) / V : 73.7°(Wide)~21.4°(Tele) |
| Sensitivity (F1.2) | 0.1 Lux (Col), 0.001 Lux (Mono) |
| Digital Zoom | 4x Zoom |
| Effective Pixels (H x V) | 758 x 540 |
| Electronic Shutter Speed | 1/50 ~ 1/100,000 Sec |
| Scanning System | 2:1 Interlace |
| S/N Ratio | >50dB |
| Synchronisation | INT/LL Selectable |
| Frequency | Horizontal: 15.625KHz Vertical: 50.00Hz |
| Video Output | 1.0Vp-p~75Ω |
| Day / Night | AUTO / COLOUR / B&W |
| 3D-DNR | OFF / LOW / MIDDLE / HIGH |
| Sens-Up | AUTO / OFF (Selectable limit x2 ~ x32) |
| WDR | LOW / NORMAL / MIDDLE / HIGH (Max 120db) |
| O.S.D. | YES, BUILT-IN |
| Gain Control | AUTO / HIGH / LOW / OFF SELECTABLE |
| White Balance | ATW / AWB / INDOOR / OUTDOOR / MANUAL |
| Back Light Compensation | BLC / OFF SELECTABLE |
| Privacy Masking | ON / OFF (12 Programmable Zones) |
| Motion Detection | ON / OFF (4 Zones) |
| Flip | HORIZONTAL / VERTICAL |
| Communication / Protocol | RS-485 |
| UTP | YES |
| IR LEDs & Illumination Distance (850nm) | 30 IR LEDs, Approximately 20 Metres* |
| IP Rating | IP66 |
| Operating Conditions | Temperature: -10°C ~ +50°C, Humidity: 95% RH |
| Power Supply | DC 12V / AC 24V (±10%) |
| Power Consumption | 400mA (AC24V) / 650mA (DC12V) |
| Dimensions (W x D x H) | 90.3 x 130.8 x 245.9 mm |
| Weight | 1100g |

Features and specifications are subject to change for further improvement without any notice
 Important Note - The Infra-red range assumes ideal conditions