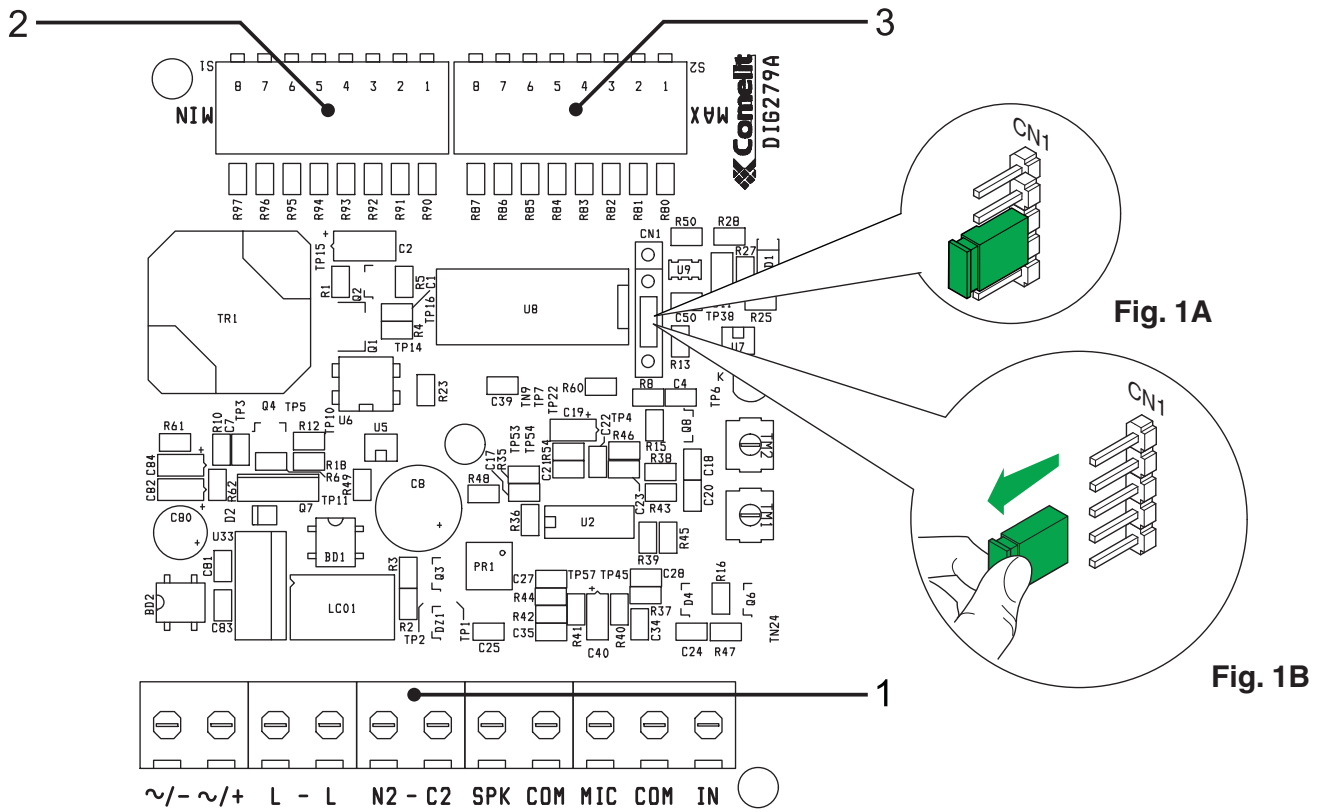


EN
TECHNICAL
SHEET

FT SB 22



- 1 Terminal block for system connection:
 - ~+ ~-12VAC-20VDC power supply
 - L L Bus line connection
 - N2 C2 Dry contact
 - SPK COM Speaker out
 - MIC COM Mic in
 - IN COM factory settings: External unit audio activation (see Fig.1A) or Door lock control input terminal (see Fig. 1B)
- 2 The DIP switch defines the MIN range of codes that can be recognised by the device
- 3 The DIP switch defines the MAX range of codes that can be recognised by the device

www.comelitgroup.com



