



CATALOGUE 2013.2014

Video Intercoms
Home Automation
Access Control





The Best Way
to Communicate



Farfisa has been synonymous with **Intercoms** since 1967 when it already represented the division devoted to the residential communication of historical musical instruments company. Just 20 years ago, in 1993, the company implemented a major change and became autonomous and independent under the name **Aci Farfisa**.

The History of **Videointercom, Telephony and Security** is characterized by continuous economic growth and growth in organizational structure, from conquering new market segments and from the challenges in new sectors related to its core manufacturing. So today it has an excellent sales and service network in Italy and abroad, and is sure of its strengths: **product**

quality, listening to customers, internationalization.

In fact, the all-round qualities are the pride of Aci Farfisa: customer service to ensure complete satisfaction involves careful design and selection of materials. The entire production process is followed step by step with the aim of best meeting the various demands wherever they are found in the world of Electrical Material and Security that even come from very different markets. The company is in fact present and distributes its systems in at least 60 countries worldwide.

Videointercom, Security, Telephony today are integrated into the sphere of **Residential Home Automation** for a modern, complete and reliable range.





Made in Italy, high Quality

There should be some mention of a value that Aci Farfisa holds particularly close to its heart: **Made in Italy.**

For Farfisa to be able to fully create its own projects and its own productions as well as being a guarantee of success is a fact that fills with pride and is unquestionably a tangible sign of high quality, appreciated in Italy and highly sought after by abroad customers.

The company has also obtained the **ISO 9001** quality certification to ensure the efficient methods and strict control over the entire production cycle.

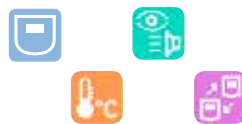
MADE IN ITALY

Aci Farfisa is associated to





myLogic



enter the smart house

With the development of **myLogic** we are proud to say that **residential communication** enters the field of **home automation**. The heart of the innovative **myLogic** line is the **advanced video intercom station** designed by Nico Smeenk. It is an elegant, refined hands-free video intercom with a large 4.3" 16:9 touch screen LCD-TFT. Clean, elegant design to enhance interior decoration, **ergonomic use** with clear, intuitive icons, and user interface with appealing graphics: this is **myLogic**, easy to install and simple to use. Thanks to the consolidated **Duo System** technology, all **main functions** - from heating/air conditioning to access control, irrigation, shutters, etc. - are managed from the **myLogic** station in a simple, intuitive way with customization options. Just touch the screen with your finger or pen, or press the 4 function keys: the **personalized programs** created by the user will activate the connected devices upon occurrence of planned events. **myLogic** makes communication easier also inside the home. In addition to traditional **video intercom features**, it offers intercom/text transmission, block notes, lost calls recording with photo from camera and many other functions.

myLogic is provided with a memory card reader to import user's images (photo frames) that can be used for personalized screen savers.

myLogic is anyway much more: it is a complete videointercom range meeting any requirements, always on Duo System, by offering mainly 3 versions: myLogic ONE with OSD technology, myLogic Video with advanced videointercom functions up to myLogic Home Automation. The series is complete with accessories and installation elements for a customized offer in features, installation and environment.

myLogic is the new solution by Aci Farfisa to open the doors to home automation.





ZHERO

Extremely essential in the operation keys and into the simple and cured lines which strongly characterize the look, the new **ZHERO** colour hand free monitor is conceived to be **surface wall mounted**.

It uses **soft touch keys** and it's the ideal solution for functional and modern environments where it's perfectly integrated thanks also to the optimised dimensions. It perfectly works with Duo System.

Exhito

style in technology

Exhito is the name of the videointercom range that carries with it all the functions you can expect from a monitor: state-of-the-art technology and flexibility with a strongly-characterised appealing design. Distinguished by a thin, discreet footprint, strong personality and long-lasting construction, **Exhito** guarantees numerous features with 7 buttons for automatic switch-on and door lock and 5 buttons for intercom calls and auxiliary services, such as ring tone deactivation.

The monitor is white, and the grey frame around the 4" LCD (b/w in the basic version) can be easily changed with green, blue or metallized grey frames for better integration with the interior decoration. **Exhito** is the solution to **all system requirements** (also for intercom installations), from traditional or reduced wiring to the FN4000 and DF6000 digital systems. But **Exhito** is much more than that, and can also be used for Duo System, Aci Farfisa digital system with 2 non-polarised wires.



Echos

colour communication

Featured by state-of-the-art design, **Echos** has an aesthetically pleasant structure, perfectly harmonised with new trends of interior architecture, delivers the most sought-after operational features.

Echos has been developed in colour version, with 3.5" LCD that can be adjusted on the horizontal axis to compensate for reflections and ensure correct vision for the user. Moreover, it has been conceived in **hands-free** mode: once you have made the connection by simply pressing the activation button, your hands will be free with no traditional handset. It's provided with intuitive function-buttons for door lock release, self-switch on of display, ring tone deactivation (with LED for status indication), audio volume and picture brightness adjustment, **intercommunication**, if available, and some additional features. The system takes advantage of the **electronic call note** to ensure the best sound quality. **Echos** has been designed for the most demanded technologies, starting from the digital system Duo System or FN4000, including reduced or conventional wiring installations.



MATRIX STYLE

the antivandal door station

Strong construction, reliability and elegance: these are the key words for **Matrix Style**, a modern **modular** line of **anti-vandalism** external door stations. **Matrix Style** has been designed to withstand tampering, penetration of solids and water jets. The technical specifications are guaranteed by **IP45** against external solid bodies and **IK09** against shocks.

Today **Matrix Style** is enriched with **up-to-date colours and finishes**, evoking lightness in its renowned sturdy structure. Frames are also available in titanium grey colour, with mirror-polished plates that combine elegance and long-standing life.

Both the front plate and buttons are made of stainless steel. The push-button modules are backlit with green LED's for easy identification in poor lighting conditions. Modularity guarantees video or intercom installations with high number of users, also in horizontal line configuration. The range is complete with die-cast aluminium frames and rain shelters for wall installation, along with back boxes.

Matrix Style can be used for **analogue and digital installations** from Duo System, FN4000 and DF6000, with digital or traditional call modules.





Profilo

the best technology in the smallest space

Featured by modern lines and great reliability, **Profilo** is a **modular** series of external door stations for intercom or videointercom installations, including with high complexity level. The front plates are made of anodised extruded aluminium with steel call buttons. The name plates are backlit with green light for better visibility in poor lighting conditions.

The strength of the line is the **excellent optimisation of the module size**, which makes **Profilo** especially suitable for systems with small rooms, such as installation in gates. The range also includes elements with double video or audio call button with integrated electrical door keeper. In combination with push-button modules, recessed boxes and relevant accessories, a **high number of users** can be achieved.

Profilo is available in **all Aci Farfisa analogue technologies** and in Duo System, DF6000 and FN4000 for **digital systems**. Digital or traditional call modules are available in both ranges.

AGORÀ

the subtle art of communication

Agorà is the new elegant and robust video door station, with slim and compact shape. Simply conceived, this **modular** range uses a **few elements** to create **flexible solutions**.

Surface mounted - therefore extremely easy to install - this modular range is characterized by the very thin profile, so it slightly protrudes from the wall.

Even in width, **Agorà** module has **reduced dimension**, colour camera is conceived with pin-hole lens while front plate is made in anodised extruded aluminium. Name-holders are back lit in original blue colour for easy identification even in poor lighting conditions.

Agorà can be used with all Aci Farfisa internal stations for the easiest and the most modern technologies, that means Duo System, 2-wire digital technology and analogue reduced wiring technology.

Recently a new proposal has been added to the **Agorà** line, the **Light** one with clear grey plastic front different with respect to the dark grey colour of the classic version.

It can simply work with all the indoor Farfisa stations, properly exploiting the most modern and simple system, from Duo System up to the analogue with reduced wiring.





Digital Video Intercom

	DUO SYSTEM
	INTERNAL STATIONS
16	ZHero
17	myLogic
18	Echos
18	Exhito
	DOOR STATIONS
19	Agorà Light
20	Agorà
20	Profilo
22	Matrix Style
23	SYSTEM ELEMENTS
23	POWER SUPPLIES AND ACCESSORIES
24	VIDEO KITS
	FN4000
	INTERNAL STATIONS
30	Echos
31	Exhito
31	Compact
	DOOR STATIONS
32	Profilo
34	Matrix Style
35	SYSTEM ELEMENTS
35	POWER SUPPLIES AND SERVICE MODULES
	DF6000
	INTERNAL STATIONS
38	Exhito
	DOOR STATIONS
39	Profilo
41	Matrix Style
41	POWER SUPPLIES AND SERVICE MODULES

Analogue Video Intercom

- REDUCED WIRING, ELECTRONIC CALL**
- INTERNAL STATIONS**
- 46 Echos
- 47 Exhito
- DOOR STATIONS**
- 48 Agorà Light
- 49 Agorà
- 49 Profilo
- 51 Matrix Style
- 52 Mody
- 53 **POWER SUPPLIES AND SERVICE MODULES**
- 54 **VIDEO KITS AND AUDIO KITS**

- CONVENTIONAL WIRING, ELECTRONIC CALL SYSTEM**
- INTERNAL STATIONS**
- 58 Echos
- 59 Exhito
- DOOR STATIONS**
- 60 Profilo
- 62 Matrix Style
- 63 Mody
- 65 **POWER SUPPLIES AND SERVICE MODULES**
- 66 **VIDEO KITS**
- 67 **AUDIO KITS**

- ALTERNATE CURRENT CALL SYSTEM**
- INTERNAL STATIONS**
- 70 700
- 70 Project
- DOOR STATIONS**
- 71 Profilo
- 72 Matrix Style
- 73 Mody
- 75 **POWER SUPPLIES AND SERVICE MODULES**
- 75 **AUDIO KITS**



Home Automation

- INTERNAL STATIONS**
- 80 myLogic
- DOOR STATIONS**
- 81 **SYSTEM ELEMENTS**
- 82 **POWER SUPPLIES AND SERVICE MODULES**
- 83 **VIDEO KITS**

Access Control

- 86 **PROXIMITY READERS**
- 86 **AUDIO KITS**
- 87 **KEYPADS**

Telephony


- 90 **DOOR STATION GSM MYCOM**
- 92 **ELECTRONIC PABX's**
- 92 **INTERCOM - TELEPHONE INTERFACE**
- 92 **PROTECTION DEVICES**



PRODUCT \ TECHNOLOGY CROSS REFERENCE

INTERNAL STATIONS



	ZHero	myLogic Home Automation	myLogic video	myLogic One	Echos	Echos	Exhito	Exhito basic
DUO SYSTEM 	• 16	• 17	• 17	• 17	• 18	• 18	• 18	
FN4000 					• 30		• 31	• 31
DF6000							• 38	• 38

DOOR STATIONS



	Agorà Light	Agorà	Profilo	Profilo	Matrix Style	Matrix Style	KITS	Video Kit
DUO SYSTEM 	• 19	• 20	• 21	• 20	• 22	• 22	DUO SYSTEM	• 24
FN4000 			• 26, 32	• 26, 32	• 26, 27, 32, 33	• 26, 32, 34	FN4000	
DF6000			• 39, 40	• 39, 40		• 39, 41	DF6000	

This picture introduces the complete panorama of the Aci Farfisa products ranges and their correspondence with the video intercom digital system.

The number of indicated pages allows, at a glance, view of the products available for each system technology.

Digital Video Intercom



• 18	• 18	
	• 31	
• 38	• 38	

DOOR KEEPER EXCHANGERS



DUO SYSTEM

• 23	
	• 35

FN4000

DF6000

13

27

37

DUO SYSTEM

FN4000

DF6000







INTERNAL STATIONS

- 16 ZHero
- 17 myLogic
- 18 Echos
- 18 Exhito

DOOR STATIONS

- 19 Agorà Light
- 20 Agorà
- 20 Profilo
- 22 Matrix Style

SYSTEM ELEMENTS

POWER SUPPLIES AND ACCESSORIES

VIDEO KITS

DUO system
color

DUO SYSTEM

The Duo System digital system is characterized by extreme ease of assembly because it is based on only 2 non-polarized wires. The result is a clear and substantial saving of time and therefore cost, with the possibility of wiring and installation errors practically reduced to zero.

The Duo System installation is designed for medium and large systems and makes work easier even in restructuring situations because the wiring is simplified and basic.

Another advantage of the system is the possibility of integrating video surveillance cameras. Duo System is the technology which forms the backbone of Home Automation, essentially represented by myLogic and all its applications.



DUO SYSTEM

Duo System is the innovative **2-wire digital system** that allows **quick and easy** assembly of a Videointercom system, even if it is large in size and considerably complex. The 2 wires which transmit video, audio, door lock and various controls signals are **not polarized**, so installation and maintenance over the years are facilitated maximally, greatly reducing time, cost and wiring errors. The Duo System technology is consolidated by various successful installations, but that does not stop it from evolving by integrating new items or accessories to the range that make the system even more powerful and competitive.

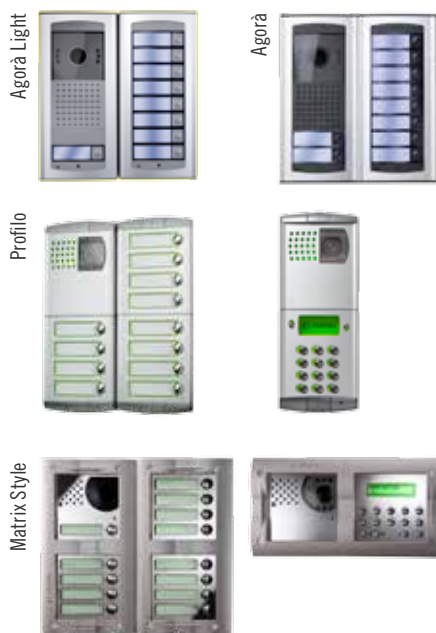
Today, added to the internal stations are the new ZHero line and new version of myLogic, which today is even more flexible, while added to the external stations is Agorà Light, the version with light grey colour schemes. The range of products is completed with Echos and Exhito for internal stations with Matrix Style and Profilo for external stations, with digital and traditional call modules Another plus is PDX2000, **the door-keeper exchanger** that is flexible and practical which enriches the functionality of the Duo System. The best performance is guaranteed: 200 internal stations and multiple main and secondary external stations with a **reduction of time, cost and wiring errors**. Duo System is also the carrier technology of **Home Automation myLogic systems**. An interesting benefit not to be underestimated: Integration with **Video surveillance** systems is possible in the Duo installation.



Up to 200 indoor stations



Several main and secondary outdoor stations



Digital door-keeper exchanger



Surveillance cameras management

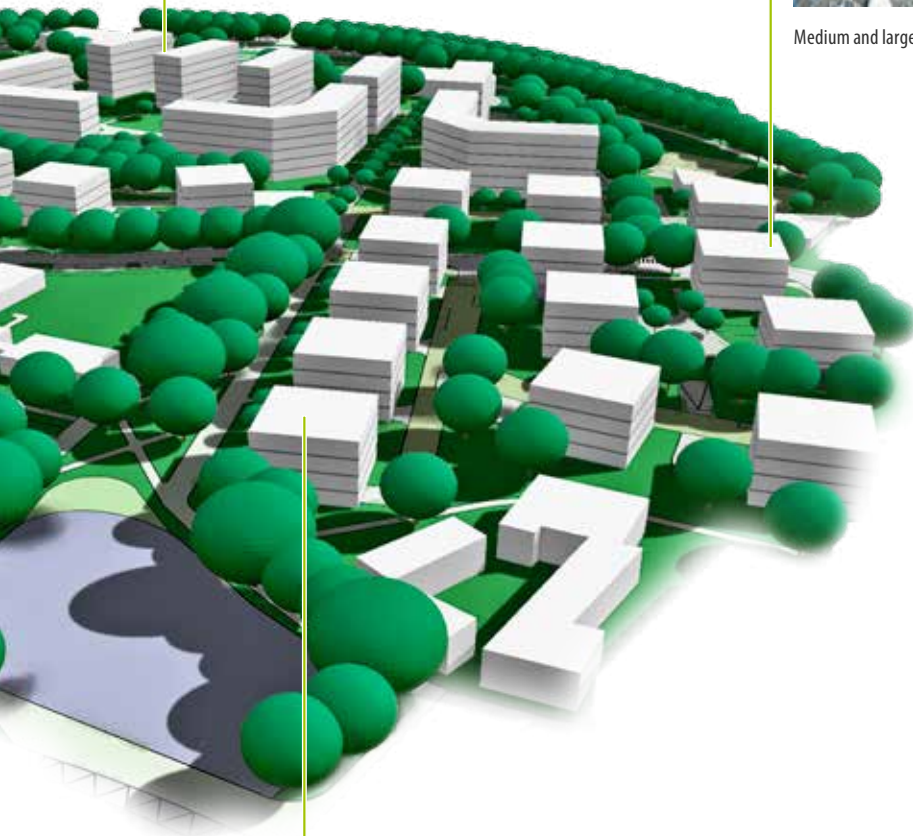




Reconstruction

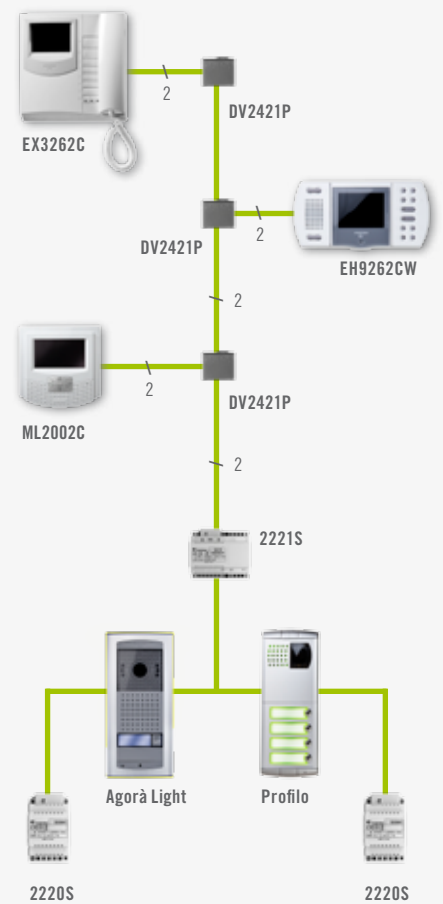


Medium and large residential estates



Residential estates

Installation scheme example





INTERNAL STATIONS

The series of internal stations available for the Duo System are the most innovative in the videointercom panorama: ZHero, myLogic, Echos, Exhito. All offer the best performance for colour Videointercom with design excellence. With different versions, installation components and accessories, the range of choice is very wide and allows you to find the best compromise for the functionalities and economical optimisation demands with a view to achieving the greatest result and thus satisfaction of requirements.

ZHERO



New monitor that fully exploits Duo System technology, the most advanced and versatile amongst all the installation typologies, hence it finds natural application with ZHero. It takes advantage of the OSD system to program and to organize details and operation parameters of the 3,5" display. The soft touch keys allow to easily govern the menu access and the driving of the functions more frequently used. Essential in the lines, it's conceived for being surface mounted with thin prominence on the wall. It can also be recessed in the wall using the appropriated mounting elements.



www.acifarfisa.it

new

INTERNAL STATIONS ZHERO



ZH1262W

Dim: mm 123x168x29
Colour: white

White coloured monitor to be surface wall mounted with 3,5" LCD display. It's with soft touch buttons either for functions activation or to drive the OSD system operations. It allows electric lock release, bell sound exclusion, camera auto switching and a second lock opening.



ZH1262B

Dim: mm 123x168x29
Colour: black

Black coloured monitor to be surface wall mounted with 3,5" LCD display. It's with soft touch buttons either for functions activation or to drive the OSD system operations. It allows electric lock release, bell sound exclusion, camera auto switching and a second lock opening.

INSTALLATION ELEMENTS

ZH1083

Back box. To be used with the bracket and frame of the related colour.

ZH1084W

White coloured bracket and frame to be used with back box ZH1083.

ZH1084B

Black coloured bracket and frame to be used with back box ZH1083.

INTERNAL STATIONS MYLOGIC



ML2002C

Dim: mm 154x154x30
Colour: white

Colour hands-free **myLogic One** videointercom for Duo System Color with OSD technology. 4.3" LCD screen, 16:9 format. 4 function buttons for the classic **videointercom** functions (door-lock, intercommunication, auto switch-on etc.). Compatible with the PDX2000 digital door-keeper exchanger.



ML2062C

Dim: mm 154x154x30
Colour: white

Colour hand-free videointercom for Duo System Color. 4.3" LCD-TFT touch screen, 16:9 format. 4 function buttons and instructions on the graphic interface (by finger touch or nib supplied) for the classical **videointercom** functions (door-lock, intercommunication, auto switch-on etc). Further advanced features video memory, block notes, memo, photo frame. Software updating and imported personal pictures are possible through memory card.



ML2262C

Dim: mm 154x154x30
Colour: metal grey and dark anthracite colour

Colour hand-free videointercom with home automation functions for Duo System Color. 4.3" LCD-TFT touch screen, 16:9 format. 4 function buttons and instructions on the graphic interface (by finger touch or nib supplied) for the classical **videointercom** functions and home automation features. In videointercom area door-lock, intercommunication, auto switch-on, video memory, block notes, memo. Home automation functions allow external devices control through specific interfaces. Software updating and imported personal pictures are possible through memory card.



INSTALLATION ELEMENTS

ML2083

Dim: mm 148x143x45

Back box for myLogic stations.

WA2160W

Dim: mm 155x150x35

White wall adaptor for surface mounting of myLogic monitors. Made in plastic, it can be used in all the surface mounting installations of myLogic monitors, instead of the flush mounting.

WA2160T

Dim: mm 155x150x35

Silver colour wall adaptor for surface mounting of myLogic monitors. Made in plastic, it can be used in all the surface mounting installations of myLogic monitors, instead of the flush mounting.

TA2160

Table adaptor for myLogic monitors, to be mounted with WA2160W or WA2160T, supplied with connection cables.

ACCESSORIES

MC2000W

White plastic cover for myLogic monitors. It allows the personalization of the videointercom, by changing the one supplied with the monitor.

MC2000T

Silver colour plastic cover for myLogic monitors. It allows the personalization of the videointercom, by changing the one supplied with the monitor.



HOME AUTOMATION

Further info about myLogic in HOME AUTOMATION section



OSD On Screen Display



TOUCH SCREEN

The **OSD (On Screen Display)** technology allows to program the functions in a simple way by the available keys, it allows the visualization of a menu overlapped to the screen picture, for example it results extremely easy to use for brightness adjustment while the image is displayed.

On the contrary by the **Touch Screen** system the commands are directly enabled by finger touching the screen on the corresponding icons. Therefore immediateness is the top of the practical operation for setting or planning.



INTERNAL STATIONS ECHOS



EH9262CW

Dim: mm 208x103x26
Colour: white and grey

Colour boom voice monitor for Duo System in **white** colour. LCD 3.5" screen, **adjustable** on horizontal axis. Function buttons for door-opening, auto switch-on, bell exclusion (with LED indicating the setting), volume and brightness adjustment and 6 further buttons for **intercommunicating** and additional functions.



EH9262CT

Dim: mm 208x103x26
Colour: techno colour

Colour boom voice monitor for Duo System in **techno** colour. LCD 3.5" screen, **adjustable** on horizontal axis. Function buttons for door-opening, auto switch-on, bell exclusion (with LED indicating the setting), volume and brightness adjustment and 6 further buttons for **intercommunicating** and additional functions.

INSTALLATION ELEMENTS



9083

Dim: mm 192x86x26

Back box for wall mounting of EH9262CW and EH9262CT monitors.



WA9100W

Dim: mm 192x86x26
Colour: white

Wall adaptor for surface mounting of EH9262CW monitor.



WA9100T

Dim: mm 192x86x26
Colour: techno grey

Wall adaptor for surface mounting of EH9262CT monitor.

TA9160

Dim: mm 135x240x75

Table adaptor for Echos monitors. For mounting it needs WA9100T or WA9100W. Compatible with all the systems technologies.

INTERNAL STATIONS EXHITO



EX3262C

Dim: mm 211x218x62
Colour: white

Colour monitor LCD 4" screen for Duo System Color. Provided with 7 function buttons (auto switch-on, door-opening and further 5 for additional functions).



EX3262

Dim: mm 211x218x62
Colour: white

B/W monitor 4" screen for Duo System. Provided with 7 function buttons (auto switch-on, door-opening and further 5 for additional functions).



EX352

Dim: mm 65x218x62
Colour: white

Intercom for Duo System basic version, provided of **3 function buttons** of which 1 lock release and further 2 for additional functions.



EX362

Dim: mm 83x218x62
Colour: white

Intercom for Duo System, provided with **7 function buttons**, 1 of which door-opening and further 6 for additional functions.

INSTALLATION ELEMENTS

WB3262

Wall bracket for EX3262C, EX3262.

TA3160

Table adaptor for Exhito **videointercoms**. Made in metal, it is provided with 2.4 m cable with 20 conductors.

TA320

Table adaptor for Exhito **intercoms**. Made in metal, it is provided with 2.4 m cable with 20 conductors.

ACCESSORIES



MC3000B

Interchangeable cover **blue "sky"** colour that replaces the one provided for the screen of Exhito monitor.

MC3000G

Interchangeable cover **green "spring"** colour that replaces the one provided for the screen of Exhito monitor.

MC3000T

Interchangeable cover **silver "champagne"** colour that replaces the one provided for the screen of Exhito monitor.



DOOR STATIONS

All ranges of Farfisa external stations can be suitably exploited in the Duo System. In this case, it is Agorà (including the Agorà Light, the new variation with light grey colour with ABS components), Profilo and Matrix Style anti-vandal protection.

All are modular and with integrated electrical door speaker units, while the Profilo and Matrix Style offer the possibility of calling with traditional buttons or via digital modules.

DOOR STATIONS AGORÀ LIGHT



VD2121CAGL

Dim: mm 99x208x30

Composed by surface mounting box, front plate with frame, cover, door speaker, **colour camera** and 1 button for door stations up to 2 calls, **Agorà Light** version in light grey. Digital Duo System technology.



AD2121CAGL

Dim: mm 99x208x30

Composed by surface mounting box, front plate with frame, cover, **door speaker** and 1 button for door stations up to 2 calls, **Agorà Light** version in light grey. Digital system Duo System.



AGL100TS

Dim: mm 99x208x30

Composed by surface mounting box, front plate with frame **for combination** with audio-video or just audio door station up to 8 additional buttons, complete with appropriate connection cables, **Agorà Light** version in light grey. Digital system Duo System. Nearby photo with push buttons configuration at maximum extension.



INSTALLATION ELEMENTS

WA01AG

Aluminium wall adaptor that easily allows the **replacement** of a Mody external door station flush mounted into a Agorà surface mounted one.

ACCESSORIES

AGL21

Single call button module.

AGL20

Blank button module.



DOOR STATIONS AGORÀ



VD2121CAG

Dim: mm 99x208x30

Composed by surface mounting box, front plate with frame, cover, door speaker, **colour camera** and 1 button for door stations up to 2 calls. Digital Duo System technology.



AD2121CAG

Dim: mm 99x208x30

Composed by surface mounting box, front plate with frame, cover, **door speaker** and 1 button for door stations up to 2 calls. Digital system Duo System.



AG100TS

Dim: mm 99x208x30

Composed by surface mounting box, front plate with frame **for combination** with audio-video or just audio door station up to 8 additional buttons, complete with appropriate connection cables. Digital system Duo System.

Nearby photo with push buttons configuration at maximum extension.

INSTALLATION ELEMENTS

WA01AG

Aluminium wall adaptor that easily allows the replacement of a Mody external door station flush mounted into a Agorà surface mounted one.

ACCESSORIES



AG21

Single call button module.



AG20

Blank button module.

PROFILO AUDIO AND VIDEO MODULES



VD2120CPL

Dim: mm 99x110x17

Audio-video door station for Duo System Color without call buttons. Colour camera with fixed 3.6 mm lens. To be installed joint with CD213...PL module with conventional buttons or with digital TD2100PL module.



AD2120CPL

Dim: mm 99x110x17

Audio external door station for Duo System without call buttons. To be installed joint with CD213...PL module with conventional buttons or with digital TD2100PL module.

PROFILO DIGITAL DOOR STATIONS



TD2100PL

Dim: mm 99x110x17

Digital door station for Duo System, with aluminium front plate and 14 steel buttons. Equipped with LCD graphic display. It allows the call to the user by **dialling the corresponding number** and electric lock release by entering the private code. The **electronic index** is also integrated, which gives the possibility to scroll the names in alphabetical order and select the desired one. It can store up to 200 user names.



PROFILO
CONVENTIONAL DOOR STATIONS



CD2131PL

Dim: mm 99x110x17

Digital decoder for Duo System with **1 button** for conventional external station, it can code up to 128 users.



CD2132PL

Dim: mm 99x110x17

Digital decoder for Duo System with **2 buttons** for conventional external station, it can code up to 128 users.



CD2134PL

Dim: mm 99x110x17

Digital decoder for Duo System with **4 buttons** for conventional external station, it can code up to 128 users.



CD2138PL

Dim: mm 99x110x17

Digital decoder for Duo System with **8 buttons** for conventional external station, it can code up to 128 users.



PL24S

Dim: mm 99x110x17

Additional module with integrated decoder for external stations with **4 buttons** for Duo System installations.



PL228S

Dim: mm 99x110x17

Additional module with integrated decoder for external stations with **8 buttons** on 2 rows for Duo System installations.



INSTALLATION ELEMENTS PROFILO

PL71

Dim: mm 91x133x47

Back box for 1 module.

PL72

Dim: mm 91x244.5x47

Back box for 2 modules.

PL73

Dim: mm 91x356x47

Back box for 3 modules.

PL81

Dim: mm 118x153x41

Hood cover for 1 module.

PL82

Dim: mm 118x264x41

Hood cover for 2 modules.

PL83

Dim: mm 118x376x41

Hood cover for 3 modules.

PL84

Dim: mm 217x264x41

Hood cover for 4 modules on 2 vertical rows.

PL86

Dim: mm 217x376x41

Hood cover for 6 modules on 2 vertical rows.

PL89

Dim: mm 316x376x41

Hood cover for 9 modules on 3 vertical rows.

PL91

Dim: mm 118x154x80

Surface mounting rain shelter for 1 module.

PL92

Dim: mm 118x265x80

Surface mounting rain shelter for 2 modules.

PL93

Dim: mm 118x377x80

Surface mounting rain shelter for 3 modules.

PL94

Dim: mm 217x264x80

Surface mounting rain shelter for 4 modules on 2 vertical rows.

PL96

Dim: mm 217x376x80

Surface mounting rain shelter for 6 modules on 2 vertical rows.

PL99

Dim: mm 316x376x80

Surface mounting rain shelter for 9 modules on 3 vertical rows.



**AUDIO AND VIDEO MODULES
MATRIX STYLE**



VD2120CMAS

Dim: mm 115x115
Colour **audio-video** external station for Duo System Color without call buttons. The camera has a fixed 3.6 mm lens.



AD2110MAS

Dim: mm 115x115
Audio external door station for Duo System, without call buttons.

**CONVENTIONAL DOOR STATIONS
MATRIX STYLE**



CD2131MAS

Dim: mm 115x115
Digitiser for Duo System with **1 call button** for conventional external door station. It can code up to 128 users.



CD2132MAS

Dim: mm 115x115
Digitiser for Duo System with **2 call buttons** for conventional door station. It can code up to 128 users.



CD2134MAS

Dim: mm 115x115
Digitiser for Duo System with **4 call buttons** for conventional door station. It can code up to 128 users.



MAS24S

Dim: mm 115x115
Module for additional call buttons for Duo System, with **4 call buttons to be connected** to CD2131MAS, CD2132MAS or CD2134MAS. Encoding board for 4 buttons integrated

**DIGITAL DOOR STATION
MATRIX STYLE**



TD2100MAS

Dim: mm 115x115
Digital door station for Duo System, with stainless steel front plate and 14 buttons. Equipped with **16-digit display** on 2 lines. It allows the call from the user by **dialling the corresponding number** and electric lock release by entering the private code. The **electronic index** is also integrated, which gives the possibility to scroll the names in alphabetical order and select the desired one. It can store up to 250 user names.

INSTALLATION ELEMENTS MATRIX STYLE



MAS61

Dim: mm 140x140
Front frame matt titanium grey colour for 1 module.

MAS62

Dim: mm 140x257
Front frame matt titanium grey colour for 2 modules.

MAS63

Dim: mm 140x374
Front frame matt titanium grey colour for 3 modules.

MA71

Dim: mm 128x128x65
Back box for 1 module.

MA72

Dim: mm 128x245x65
Back box for 2 modules.

MA73

Dim: mm 128x362x65
Back box for 3 modules.

MA91

Dim: mm 146x145x92
Surface mounting rain shelter for 1 module.

MA92

Dim: mm 146x262x92
Surface mounting rain shelter for 2 modules.

MA93

Dim: mm 146x379x92
Surface mounting rain shelter for 3 modules.

SYSTEM ELEMENTS



PDX2000

Dim: mm 209x186x67
Colour: white

Digital door-keeper exchanger. Available functions: internal station-internal station and external station-internal station communication, auto-insertion on external door station, day/night shunted switching, gestione lost calls, guarantee of system working even with problems with the door-keeper exchanger. Further features: classification users groups, insertion on a busy user, opening of many doors even on non-specific demand, memo/agenda, servant function, different colour for display lighting. Multiple door-keepers exchanger system allowed. Updating or data import through memory card. Call queuing and call booking not available.



ST7100CW

Dim: mm 156x224x61
Colour: white

Colour monitor 4" LCD screen, adjustable in inclination, auto switch-on button and an additional one.

INSTALLATION ELEMENTS

TA7100W

White table adaptor, for ST7100CW monitors. Complete with cable clamp, junction box and 2.4 m connection cable with 20 wires. To be used with WB7260 wall bracket.



WB7260

Wall bracket for ST7100CW monitors for connection to PDX2000 door-keeper exchanger.



POWER SUPPLIES AND ACCESSORIES

2220S

Power supply for Duo System for conventional and digital external door stations. Output 13 Vac/1 A protected against overloading and shortcircuits. Dim: 3 DIN modules.



2221ML

Flat power supply for myLogic in multi-way installations. It powers all devices with a proper audio, video and data impedance.



2221S

Line driver 6 DIN modules. Directly connected to the mains, it allows power to Duo System riser.



2223

Video amplifier for b/w Duo System installations.



2223C

Video amplifier for Duo System colour installations.



2230

Flat separator in home automation installations with Duo System with myLogic.

2273

Digital exchanger for Duo System.



2281

Actuator for Duo System, used to activate auxiliary services, such as additional door lock, lights, and chimes.

2302

Twisted pair wire for Duo System with single section 1 sq. mm., 100 m coil.

DV2424P

Video distributor 4 output for Duo System. It is very flexible and it allows very wide installations. It is used to withdraw the signal from the riser.



DV2420

Line distributor for Duo System.



DV2421P

Video distributor for Duo System.



DV2422A

Active video line distributor, 2 outputs, specific for myLogic monitor, it also can be connected to all the other Duo System devices.



DM2444

Concentrator module that allow to selectively centralize more door stations and more risers.

PRS210

15 VA transformer. 127-230 V. 13 Vac. VDE certification. 3 DIN modules in DIN bar, or it can be mounted on the wall. Can be used to power art. 2223, 2223C and 2281.



2287

Selector for 4 or 7 exchanges for Duo System. It allows the selection of maximum 4 or 7 surveillance cameras and/or other services activation.



VIDEO KITS

One or two family solutions in a practical videokit are available. Easy to install as it is on Duo System wiring are ready and complete with all components to make up the system. They are all packed in elegant cases.

MYLOGIC-AGORÀ LIGHT SERIES



- **ML2002AGLC**
One-way colour videokit with myLogic One monitor and Agorà Light external station.



- **ML2062AGLC**
One-way colour videokit with myLogic videointercom and Agorà Light external station.

- **ML2262AGLC**
One-way colour videokit with home-automation myLogic monitor and Agorà Light external station.

MYLOGIC-AGORÀ SERIES



- **ML2002AGC**
One-way colour videokit with myLogic One monitor and Agorà external station.



- **ML2062AGC**
One-way colour videokit with myLogic videointercom and Agorà external station.

- **ML2262AGC**
One-way colour videokit with home-automation myLogic monitor and Agorà external station.

MYLOGIC-PROFILO SERIES



- **ML2002PLC**
One-way colour videokit with myLogic One monitor and Profilo external station.



- **ML2062PLC**
One-way colour videokit with myLogic videointercom and Profilo external station.

- **ML2262PLC**
One-way colour videokit with home-automation myLogic monitor and Profilo external station.



ECHOS-AGORÀ SERIES


- EH9262AGCW**
 One-way colour videokit with white Echos monitor and Agorà external station.



- EH9262AGCT**
 One-way colour videokit with metal grey colour Echos monitor and Agorà external station.

ECHOS-PROFILO SERIES


- EH9262PLCW**
 One-way colour video kit with white Echos monitor and Profilo external station.



- EH9262PLCT**
 One-way colour video kit with metal grey colour Echos monitor and Profilo external station.

- EH9262PLCW/2**
 Two-way colour video kit with white Echos monitors and Profilo external station.

- EH9262PLCT/2**
 Two-way colour video kit with metal grey colour Echos monitors and Profilo external station.

EXHITO-AGORÀ SERIES


- EX3262AGC**
 One-way colour videokit with Exhito monitor and Agorà external station.



- EX3262AG**
 One-way b/w videokit with Exhito monitor and Agorà external station.

EXHITO-PROFILO SERIES


- EX3262PLC**
 One-way colour video kit with Exhito monitor and Profilo external station.



- EX3262PL**
 One-way b/w video kit with Exhito monitor and Profilo external station.

- EX3262PLC/2**
 Two-way colour video kit with Exhito monitor and Profilo external station.

- EX3262PL/2**
 Two-way b/w with Exhito monitor and Profilo external station.

VIDEO KIT COMPOSITION

	KIT	INTERNAL STATIONS	DOOR STATIONS	POWER SUPPLY
One-way colour	ML2002AGLC	MYLOGIC ML2002C+ML2083	AGORÀ LIGHT VD2121CAGL	2220S+2221ML
	ML2062AGLC	MYLOGIC ML2062C+ML2083	AGORÀ LIGHT VD2121CAGL	2220S+2221S
	ML2002AGC	MYLOGIC ML2002C+ML2083	AGORÀ VD2121CAG	2220S+2221ML
	ML2062AGC	MYLOGIC ML2062C+ML2083	AGORÀ VD2121CAG	2220S+2221S
	ML2002PLC	MYLOGIC ML2002C+ML2083	PROFILO VD2120CPL+CD2131PL+PL72	2220S+2221ML
	ML2062PLC	MYLOGIC ML2062C+ML2083	PROFILO VD2120CPL+CD2131PL+PL72	2220S+2221S
	EH9262AGCW	ECHOS EH9262CW+9083+WA9100W+DV2421P	AGORÀ VD2121CAG	2220S+2221S+DV2420
	EH9262AGCT	ECHOS EH9262CT+9083+WA9100T+DV2421P	AGORÀ VD2121CAG	2220S+2221S+DV2420
	EH9262PLCW	ECHOS EH9262CW+9083+ WA9100W+DV2421P	PROFILO VD2120CPL+CD2131PL+PL72	2220S+2221S+DV2420
	EH9262PLCT	ECHOS EH9262CT+9083+WA9100T+DV2421P	PROFILO VD2120CPL+CD2131PL+PL72	2220S+2221S+DV2420
	EX3262AGC	EXHITO EX3262C+WB3262+DV2421P	AGORÀ VD2121CAG	2220S+2221S+DV2420
	EX3262PLC	EXHITO EX3262C+WB3262+DV2421P	PROFILO VD2120CPL+CD2131PL+PL72	2220S+2221S+DV2420
One-way colour home automation	ML2262AGLC	MYLOGIC ML2262C+ML2083	AGORÀ LIGHT VD2121CAGL	2220S+2221S
	ML2262AGC	MYLOGIC ML2262C+ML2083	AGORÀ VD2121CAG	2220S+2221S
	ML2262PLC	MYLOGIC ML2262C+ML2083	PROFILO VD2120CPL+CD2131PL+PL72	2220S+2221S
One-way b/w	EX3262AG	EXHITO EX3262+WB3262+DV2421P	AGORÀ VD2121CAG	2220S+2221S+DV2420
	EX3262PL	EXHITO EX3262+WB3262+DV2421P	PROFILO VD2120CPL+CD2131PL+PL72	2220S+2221S+DV2420
Two-way colour	EH9262PLCW/2	ECHOS 2xEH9262CW+9083+DV2421P	PROFILO VD2120CPL+CD2132PL+PL72	2220S+2221S+DV2420
	EH9262PLCT/2	ECHOS 2xEH9262CT+9083+DV2421P	PROFILO VD2120CPL+CD2132PL+PL72	2220S+2221S+DV2420
	EX3262PLC/2	EXHITO 2xEX3262C+WB3262+DV2421P	PROFILO VD2120CPL+CD2132PL+PL72	2220S+2221S+DV2420
Two-way b/w	EX3262PL/2	EXHITO 2xEX3262+WB3262+DV2421P	PROFILO VD2120CPL+CD2132PL+PL72	2220S+2221S+DV2420





	INTERNAL STATIONS
30	Echos
31	Exhito
31	Compact
	DOOR STATIONS
32	Profilo
34	Matrix Style
35	SYSTEM ELEMENTS
35	POWER SUPPLIES AND SERVICE MODULES

BASED ON
FARNET

FN4000

The FN4000 digital system based on Farnet technology is especially designed and manufactured for large and considerably complex installations.

Thanks to the high quality performance and excellent range of choice in terms of product range and proven technology guarantee, FN4000 provides the ideal solution in almost all extended system situations, offering good overall savings in economical terms.

In fact, compared to an analogue system for the same system extension, FN4000 benefits the installer thanks to simplified wiring, which obviously means cost savings and reduction of the possibility of errors.



FN4000

The FN4000 **digital system** is a solution developed **on Farnet technology** for advanced Videointercom systems. Farnet includes a series of physical and protocol specifications according to which they develop digital technology for **integrated and flexible** systems for services in residential areas. FN4000 is the alternative proposed to the traditional analogue method that allows several advantages and features:

- **simplified wiring** with 5 wires per audio system and 5 wires (more coaxial or twisted pair) per video system, regardless of the number of users, the number of parallel entrances and the number of staircases
- **guaranteed solution**, even in heavily extended systems
- **integration of the audio-video secret with electronic calling**
- **ease of installation** thanks to the few conductors and self-diagnosis for digital modules
- **possibility of integrating PDX4000 door keeper exchanger**
- **use of internal stations on the line Echos and Exhito and Compact audio-only**
- **use of internal stations on the line Profilo and Matrix Style with digital or traditional calling modules**
- **advantageous quality/price ratio**, taking performance and installation factors into consideration



Internal Stations



Door Stations



Digital door-keeper exchanger





Medium and large residential estates

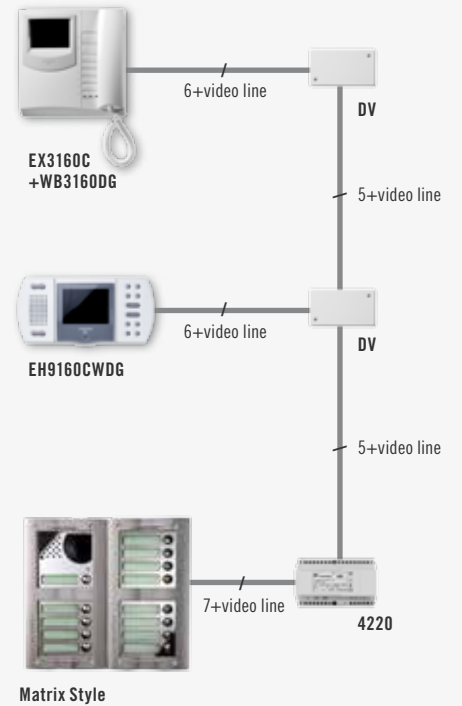


Office block



Large residential estates

Installation scheme example





INTERNAL STATIONS

With FN4000, the possible Videointercoms are the series Echos and Exhito, both in colour, flexible and with integrated decoding. Exhito also offers solutions in b/w or in a new colour version that is more essential in its features, or if demanded audio-only.

Thanks to the proper installation items, for internal stations you can decide on recessed or surface or table-top mounting with specific solutions for each set.

ECHOS INTERNAL STATIONS



EH9160CWDG

Dim: mm 208x103x26
Colour: white and grey

Colour hand-free monitor for FN4000 digital system. LCD 3.5" screen, adjustable on horizontal axis. Function buttons for door-opening, auto-switch-on, bell exclusion (with LED indicating the setting), volume and brightness adjustment and further 6 buttons for intercommunicating and additional functions.



INSTALLATION ELEMENTS

9083

Dim: mm 192x86x26
Built-in back box for Echos monitor.

WA9100W

Dim: mm 192x86x26
Colour: white
Wall adaptor for surface mounting of white Echos monitor.

TA9160

Dim: mm 240x135x75
Table adaptor for Echos monitor to be mounted with wall adaptor WA9100W.



EXHITO INTERNAL STATIONS



EX3160C

Dim: mm 211x218x62
Colour: white

Colour monitor with LCD 4" screen supplied with **7 function buttons** (auto switch-on, door lock and further 5 for additional functions). It can be installed in FN4000 digital system if combined with specific WB3160DG wall bracket.



EX3160

Dim: mm 211x218x62
Colour: white

B/w monitor with LCD 4" provided with **7 function buttons** (2 for auto switch-on and door opening and further 5 for additional functions). For FN4000 digital system if combined with specific WB3160DG wall bracket.



EX3100C

Dim: mm 211x218x62
Colour: white

Colour monitor LCD 4" screen, basic version, provided with **3 function buttons** for auto switch-on, door-opening and additional functions. For FN4000 systems if connected with WB3160DG wall brackets.



EX320DG

Dim: mm 83x218x62
Colour: white

Wall bracket to mount on the wall EX3160C or EX3160 monitors in FN4000 digital systems.



INSTALLATION ELEMENTS

WB3160DG

Wall bracket to mount on the wall EX3160C, EX3160 or EX3100C monitors in FN4000 digital systems.

TA3160

Table adaptor for Exhito **videointercoms**. Made in metal, it is provided with 2.4 m cable with 20 conductors.

TA320

Table adaptor for Exhito **intercoms**. Made in metal, it is provided with 2.4 m cable with 20 conductors.



ACCESSORIES

MC3000B

Interchangeable cover **blue "sky"** colour that replaces the one provided for the screen of Exhito monitor.

MC3000G

Interchangeable cover **green "spring"** colour that replaces the one provided for the screen of Exhito monitor.

MC3000T

Interchangeable cover **silver "champagne"** colour that replaces the one provided for the screen of Exhito monitor.

COMPACT INTERNAL STATION



KM810WDG

Dim: mm 86x211x65
Colour: white

Intercom for FN4000 digital system with integrated decoding. Provided with 1 button for door-opening and one further for additional functions



DOOR STATIONS

The *Profilo* and *Matrix Style* external stations lines offer various solutions for the FN4000 system. They are both modular and allow calling with traditional buttons or digital calling components guided by the display. *Profilo* in particular will be chosen for space optimization of the module, for its reduced size in width and for the possibility of a double button. *Matrix Style* gives guaranteed against vandalism thanks to the IP45 and IK09 degrees of protection while also offering elegant finishing.

PROFILO AUDIO AND VIDEO MODULES



PL40PCDG

Dim: mm 99x110x17

Colour camera module with door speaker integrated **without call buttons**. To be joint to TD4100PL or to CD4134PL or CD4138PL modules with traditional call buttons.



PL42PCDG

Dim: mm 99x110x17

Colour camera module with door speaker integrated with **two call buttons**. To be joint to TD4100PL or to CD4134PL or CD4138PL modules with traditional call buttons.



PL10P

Dim: mm 99x110x17

Audio module with integrated door speaker **without call buttons** for conventional wiring systems.



PL11P

Dim: mm 99x110x17

Audio module with integrated door speaker with **1 call button** for 1 conventional wiring systems.



PL12P

Dim: mm 99x110x17

Audio module with integrated door speaker with **2 call buttons** for conventional wiring systems.

PROFILO DIGITAL DOOR STATION



TD4100PL

Dim: mm 99x110x17

Digital door station for FN4000, with aluminium front plate and 14 steel buttons. Equipped with LCD-graphic display. It allows the call from the user by **dialling the corresponding number** and electric lock release by entering the private code. The **electronic index** is also integrated, which gives the possibility to scroll the names in alphabetical order and select the desired one. It can store up to 200 user names. This integration allows to save further space considering other modular compositions.



CONVENTIONAL DOOR STATIONS PROFILO



CD4134PL

Dim: mm 99x110x17
Digitizer with **4 buttons** for composition with conventional external stations for digital FN4000 systems. It allows for coding up to 63 users.



CD4138PL

Dim: mm 99x110x17
Digitizer with **8 buttons** for composition with conventional external stations for digital FN4000 systems. It allows for coding up to 63 users.



PL24S

Dim: mm 99x110x17
Additional module with integrated decoder for external stations with **4 buttons** for Duo System installations.



PL228S

Dim: mm 99x110x17
Additional module with integrated decoder for external stations with **8 buttons** on 2 rows for Duo System installations.



PL50

Dim: mm 99x110x17
Street number module.



PL20

Dim: mm 99x110x17
Blank module.



PROFILO INSTALLATION ELEMENTS

PL71

Dim: mm 91x133x47
Back box for 1 module.

PL72

Dim: mm 91x244.5x47
Back box for 2 modules.

PL73

Dim: mm 91x356x47
Back box for 3 modules.

PL81

Dim: mm 118x153x41
Hood cover for 1 module.

PL82

Dim: mm 118x264x41
Hood cover for 2 modules.

PL83

Dim: mm 118x376x41
Hood cover for 3 modules.

PL84

Dim: mm 217x264x41
Hood cover for 4 modules on 2 vertical rows.

PL86

Dim: mm 217x376x41
Hood cover for 6 modules on 2 vertical rows.

PL89

Dim: mm 316x376x41
Hood cover for 9 modules on 3 vertical rows.

PL91

Dim: mm 118x154x80
Surface mounting rain shelter for 1 module.

PL92

Dim: mm 118x265x80
Surface mounting rain shelter for 2 modules.

PL93

Dim: mm 118x377x80
Surface mounting rain shelter for 3 modules.

PL94

Dim: mm 217x264x80
Surface mounting rain shelter for 4 modules on 2 vertical rows.

PL96

Dim: mm 217x376x80
Surface mounting rain shelter for 6 modules on 2 vertical rows.

PL99

Dim: mm 316x376x80
Surface mounting rain shelter for 9 modules on 3 vertical rows.





MATRIX STYLE
AUDIO AND VIDEO MODULES



MAS42CDG
Dim: mm 115x115
Colour **camera and audio module without call buttons** with 6 white LED. Autoiris 3.6 mm lens. If equipped with CV01 video signal is converted in balanced.



MAS43CDG
Dim: mm 115x115
Colour **camera and audio module with 1 call button** with 6 white LED. Autoiris 3.6 mm lens. If equipped with CV01 video signal is converted in balanced.



MAS10P
Dim: mm 115x115
Audio module with door speaker, **without call button**.



MAS11P
Dim: mm 115x115
Audio module with door speaker, with **1 call button**.



MAS12P
Dim: mm 115x115
Audio module with door speaker, with **2 call buttons**.

MATRIX STYLE
DIGITAL EXTERNAL STATION



TD4100MAS
Dim: mm 115x115
Digital door station of Matrix series with front plate and 14 Key in stainless steel. It is equipped with 16 characters on 2 lines display. It allows the user chime by **dialling the corresponding number** and electric locks release by entering the private code. The **electronic index** is also integrated. Scrolling function allows to display the tenant names in alphabetical sequence and the call is activated pressing the chime button. It contains up 250 name users.

CONVENTIONAL DOOR STATIONS
MATRIX STYLE



CD4130MAS
Dim: mm 115x115
Digitizer for **conventional** push button panels, it is contained in a Matrix single module and allows for coding up to 63 users.



MAS24S
Dim: mm 115x115
Module for **additional** call buttons for FN4000, with **4 call buttons** to be connected to CD4130MAS. Encoding board for 4 buttons integrated.

INSTALLATION ELEMENTS MATRIX STYLE



MAS61
Dim: mm 140x140
Front frame matt titanium grey colour for 1 module.

MAS62
Dim: mm 140x257
Front frame matt titanium grey colour for 2 modules.

MAS63
Dim: mm 140x374
Front frame matt titanium grey colour for 3 modules.

MA71
Dim: mm 128x128x65
Back box for 1 module.

MA72
Dim: mm 245x128x65
Back box for 2 modules.

MA73
Dim: mm 362x128x65
Back box for 3 modules.

MA91
Dim: mm 145x146x92
Surface mounting rain shelter for 1 module.

MA92
Dim: mm 262x146x92
Surface mounting rain shelter for 2 modules.

MA93
Dim: mm 379x146x92
Surface mounting rain shelter for 3 modules.

SYSTEM ELEMENTS



PDX4000

Dim: mm 215x215x89
Colour: white

Digital door-keeper exchanger. Available functions: call booking, call queuing, internal station-internal station and external station-internal station communication, door-open, day/night/night shunted switching.

POWER SUPPLIES AND SERVICE MODULES



PRS4220

Stabilised power supply, 230V/127V. 60 VA. 12 Vdc/13 Vac. Outputs protected against overloading and short circuits. Dim: 8 DIN modules.

4273P

Digital exchanger, 4 switching exchanges for systems with secondary door stations and 1 or more main common door stations. Base: 84x120 mm.

4230

One-way module for intercommunicating and secondary call. Assembled in container like 8 A DIN module.



4235TVP

Floor decoder that connects 4 monitors (or intercoms) to the digital line of FN4000 system. Moreover it allows the interface of a non-digital push button panel to the internal stations connected to the module for example for secondary door stations.

4236

Back box for 4235TVP.



1471

Two command input relay unit (12 Vac; 12/24 Vdc). 3 A modules in DIN bar.

1472

Exchange exchanger (1 A, 24 V) 3 command input: 12 Vdc/Vac, 24 Vdc and electronic note. Mountable on 3 A DIN module.



DV2

2-output video distributor for coaxial connection. Power supply: 12 Vdc.



DV4

4-output video distributor for coaxial connection. Power supply: 12 Vdc.



DV2D

2-output floor distributor for pair cable connection. Power supply: 12/21 Vdc.



DV4D

4-output floor distributor for pair cable connection. Power supply: 12/21 Vdc.



PRS210

Stabilised power supply for assembly on DIN bar. Mains supply at 230V and 127V. Protected against overloading or overvoltage by thermoprotectors. It complies with the European safety standard EN 60065.

476

Video amplifier-distributor with 1 input and 5 outputs. Power supply: 21-24 Vdc. 8 A modules on DIN bar.

CV01

It can be inserted inside Mody and Matrix Style push button panels, it allows to convert from video signal by non-balanced line to video signal by balanced line.

CV03

Video signal converter from twisted pair to coaxial cable.



1281

Stabilised power supply 230-127 Vac, 48VA, outputs protected against overloading and short circuits. Output voltages: 13 Vac and 21 Vdc. Certification: VDE. 8 A modules on DIN bar.







38	INTERNAL STATIONS Exhito
39	DOOR STATIONS Profilo
41	Matrix Style
41	POWER SUPPLIES AND SERVICE MODULES

DF6000

DF6000 is a **digital system** characterized by flexible solutions and ease of installation, thanks to a support with just 2 conductors for audio applications, plus 3 for video. In systems of medium complexity **ease of installation** and **cost-effectiveness** and the typical features of a Videointercom system are guaranteed.

The system can reach up to 8 inputs in parallel and can be used with external stations with digital or traditional calling. The DF6000 installation can be in the **extended or plus** version, which differ in the number of users, the first extending up to 255, the second up to 110 with doorbell, bell exclusion and volume control. Both versions can be integrated into the same system.

The proven DF6000 solution offers Exhito internal stations that allow audio-visual systems, both in colour and in black and white, while the outer modular stations are on Matrix style or Profilò.



INTERNAL STATIONS

The DF6000 digital system offers the most versatile among those presented in the catalogue as a series of Exhito internal stations. In fact, with Exhito you may decide to have colour, black and white or basic version video screens, or the audio-only solution, whether basic or advanced. The line is completed with installation components and accessories to find the perfect answer for each specific requirement.

EXHITO INTERNAL STATIONS



EX3160C

Dim: mm 211x218x62
Colour: white

Colour monitor with LCD 4" monitor supplied with **7 function buttons** (auto switch-on, door lock and further 5 for additional functions). It can be installed in DF6000 digital system if combined with specific WB3162 wall bracket.



EX3160

Dim: mm 211x218x62
Colour: white

B/w monitor with 4" screen equipped with door opener button and additional further buttons. It can be installed in DF6000 digital systems if joint to WB3162 wall bracket.



EX3100C

Dim: mm 211x218x62
Colour: white

Colour monitor LCD 4" screen for Duo System, basic version, provided with **3 function buttons** for auto switch-on, door-opening and additional functions. For DF6000 systems if connected with WB3162 wall brackets.



EX312

Dim: mm 65x218x62
Colour: white

Intercom for DF6000 system, basic version. With integrated decoding and address selection by shunting. Provided with 1 lock release button and 2 further ones for extra functions.



EX322

Dim: mm 83x218x62
Colour: white

Intercom for DF6000 digital systems with integrated decode module and jumper address selection. Supplied with 1 button for door lock and an additional one. Arranged for floor chime through buzzer.



INSTALLATION ELEMENTS

WB3162

Wall bracket with terminals for electrical connection and wall mounting of EX3160, EX3160C or EX3100C in digital DF6000 systems.

TA3160

Table adaptor for Exhito **videointercoms**. Made in metal, it is provided with 2.4 m cable with 20 conductors.

TA320

Table adaptor for Exhito **intercoms**. Made in metal, it is provided with 2.4 m cable with 20 conductors.

ACCESSORIES

MC3000B

Interchangeable cover **blue "sky"** colour that replaces the one provided for the screen of Exhito monitor

MC3000G

Interchangeable cover **green "spring"** colour that replaces the one provided for the screen of Exhito monitor.

MC3000T

Interchangeable cover **silver "champagne"** colour that replaces the one provided for the screen of Exhito monitor.





DOOR STATIONS

Profilo and Matrix Style are the door stations for the DF6000 digital, both of which modular. In particular, Profilo offers video colour or black and white compositions with conventional or digital module buttons, to be preferred in cases where there is little available space, then the reduced size module also with double button becomes the ideal solution. Instead the Matrix Style anti-vandal protection range is audio or colour video; it is flexible for any horizontal compositions and guarantees maximum strength because of the IP45 and IK09 degrees of protection, not to mention that it is a sign of particular elegance due to the detailed finishing.

PROFILO AUDIO AND VIDEO MODULES



PL40PCED

Dim: mm 99x110x17

Video **colour** module with fixed optics 3.6 mms with integrated speaker module **without call buttons**, for DF6000 digital systems.



PL41PCED

Dim: mm 99x110x17

Colour camera module with 3.6 mm fixed lens with integrated door speaker with **1 call button** for DF6000 digital systems.



PL42PCED

Dim: mm 99x110x17

Colour camera module with 3.6 mm fixed lens with integrated door speaker with **2 call buttons** for DF6000 digital systems.



PL40PED

Dim: mm 99x110x17

B/w camera module with 3.6 mm fixed lens with integrated door speaker **without call buttons** for DF6000 digital systems.



PL41PED

Dim: mm 99x110x17

B/w camera module with 3.6 mm fixed lens with integrated door speaker **with 1 call button** for DF6000 digital systems.



PL10PED

Dim: mm 99x110x17

Audio module with integrated door speaker **without call buttons** for DF6000 digital systems.



PL11PED

Dim: mm 99x110x17

Audio module with integrated door speaker **with 1 call button** for DF6000 digital systems.



PL12PED

Dim: mm 99x110x17

Audio module with integrated door speaker **with 2 call buttons** for DF6000 digital systems.



PROFILO DIGITAL DOOR STATIONS



TD6100PL

Dim: mm 99x110x17

Digital keyboard for digital systems DF6000 with front plate and 14 buttons in stainless steel. Provided with LCD graphic display, it allows the call of the indoor stations through **typing the corresponding number** and the door opening by a reserved code. It integrates **electronic index** allowing consultation, visualization and the single users calling. They are displayed in alphabetical order. It can contain up to 250 users names.

CONVENTIONAL DOOR STATIONS PROFILO



CD6134PL

Dim: mm 99x110x17

Digitalizer for **conventional** push button panel of **4 buttons**, it allows to codify up to 128 buttons of a conventional door station.



CD6138PL

Dim: mm 99x110x17

Digitalizer for **conventional** push button panel with **8 buttons on 2 rows**, it allows to codify up to 128 buttons of a conventional door station.



PL24S

Dim: mm 99x110x17

Additional module with integrated decoder for external stations with **4 buttons** for DF6000 digital systems.



PL228S

Dim: mm 99x110x17

Additional module with integrated decoder for external stations with **8 buttons on 2 rows** for Duo System installations.



PL50

Dim: mm 99x110x17

Street number module.



PL20

Dim: mm 99x110x17

Blank module.



PROFILO INSTALLATION ELEMENTS

PL71

Dim: mm 91x133x47

Back box for 1 module.

PL72

Dim: mm 91x244.5x47

Back box for 2 modules.

PL73

Dim: mm 91x356x47

Back box for 3 modules.

PL81

Dim: mm 118x153x41

Hood cover for 1 module.

PL82

Dim: mm 118x264x41

Hood cover for 2 modules.

PL83

Dim: mm 118x376x41

Hood cover for 3 modules.

PL84

Dim: mm 217x264x41

Hood cover for 4 modules on 2 vertical rows.

PL86

Dim: mm 217x376x41

Hood cover for 6 modules on 2 vertical rows.

PL89

Dim: mm 316x376x41

Hood cover for 9 modules on 3 vertical rows.

PL91

Dim: mm 118x154x80

Surface mounting rain shelter for 1 module.

PL92

Dim: mm 118x265x80

Surface mounting rain shelter for 2 modules.

PL93

Dim: mm 118x377x80

Surface mounting rain shelter for 3 modules.

PL94

Dim: mm 217x264x80

Surface mounting rain shelter for 4 modules on 2 vertical rows.

PL96

Dim: mm 217x376x80

Surface mounting rain shelter for 6 modules on 2 vertical rows.

PL99

Dim: mm 316x376x80

Surface mounting rain shelter for 9 modules on 3 vertical rows.



POWER SUPPLIES AND SERVICE MODULES



PR6220

Power supply, 230V/127V. 45VA. 15Vdc/13Vac. Outputs protected against overloading and short circuits. Dim: 8 DIN modules.



6273

Digital exchanger for DF6000 system, it can be used in installation with secondary entrances or several common main entrances.



PRS210

Stabilised power supplies for assembly on DIN bar. Mains supply at 230V and 127V. Protected against overloading or overvoltage by thermoprotectors. All the power supplies comply with the European safety standard EN 60065.

DV2D

2-output floor distributor for pair cable connection. Power supply: 12/21 Vdc.



DV4D

4-output floor distributor for pair cable connection. Power supply: 12/21 Vdc.



1471

2 command input relay unit (12 Vac; 12/24 Vdc). 3 A modules in DIN bar.



1472

Exchange exchanger (1A, 24V) 3 command input: 12 Vdc/Vac, 24 Vdc and electronic note. Mountable on 3 A DIN module.



MATRIX STYLE AUDIO AND VIDEO MODULES



TD6100MAS

Dim: mm 115x115

Digital keypad made by front plate and 14 steel buttons. It is equipped with 16 characters on 2 lines display. It allows the user **chime by dialling** the corresponding number and electric lock release by entering the 4-digit private code. The **electronic index** is also integrated. Scrolling function allows to display the tenant names in alphabetical sequence and user chime. It contains up to 250 name users. This integration allow to reduce further space compared to different corresponding modular compositions.



MAS43CED

Dim: mm 115x115

Colour camera and audio module with **1 call button**. Autoiris 3,6 mm lens. For 4+1 reduced wiring systems and for DF6000 digital systems.



MAS11PED

Dim: mm 115x115

Audio module with door speaker and **1 call button** for 1+1 intercom systems electronic call and for DF6000 digital systems.



PRODUCT \ TECHNOLOGY CROSS REFERENCE

INTERNAL STATIONS



	Echos	Exhito	Exhito basic	Exhito basic	Exhito	724N	Project basic	Project extendable
Reduced wiring electronic call	• 46	• 47	• 47	• 47	• 47			
Conventional wiring electronic call	• 58	• 59	• 59	• 59	• 59			
Alternate current call						• 70	• 70	• 70

DOOR STATIONS

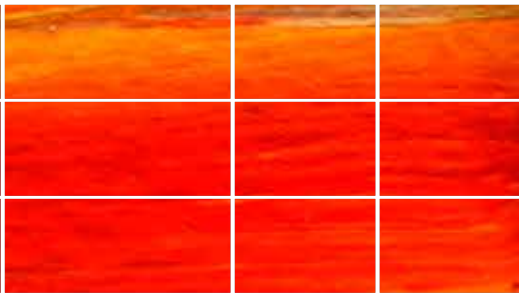


	Agorà Light	Agorà	Profilo	Matrix Style	Mody			
Reduced wiring electronic call	• 48	• 49	• 49, 50	• 51	• 52, 53			
Conventional wiring electronic call			• 60, 61	• 62, 63	• 63, 64			
Alternate current call			• 71, 72	• 72, 73	• 73, 74			

This picture introduces the complete panorama of the Aci Farfisa products ranges and their correspondence with the analogue video intercom system.

The number of indicated pages allows, at a glance, view of the products available for each system technology.

Analogue Video Intercom



KIT



Video Kit

Audio Kit

Reduced wiring
electronic call

• 54

• 55

Conventional wiring
electronic call

• 66

• 67

Alternate
current call

• 75

45

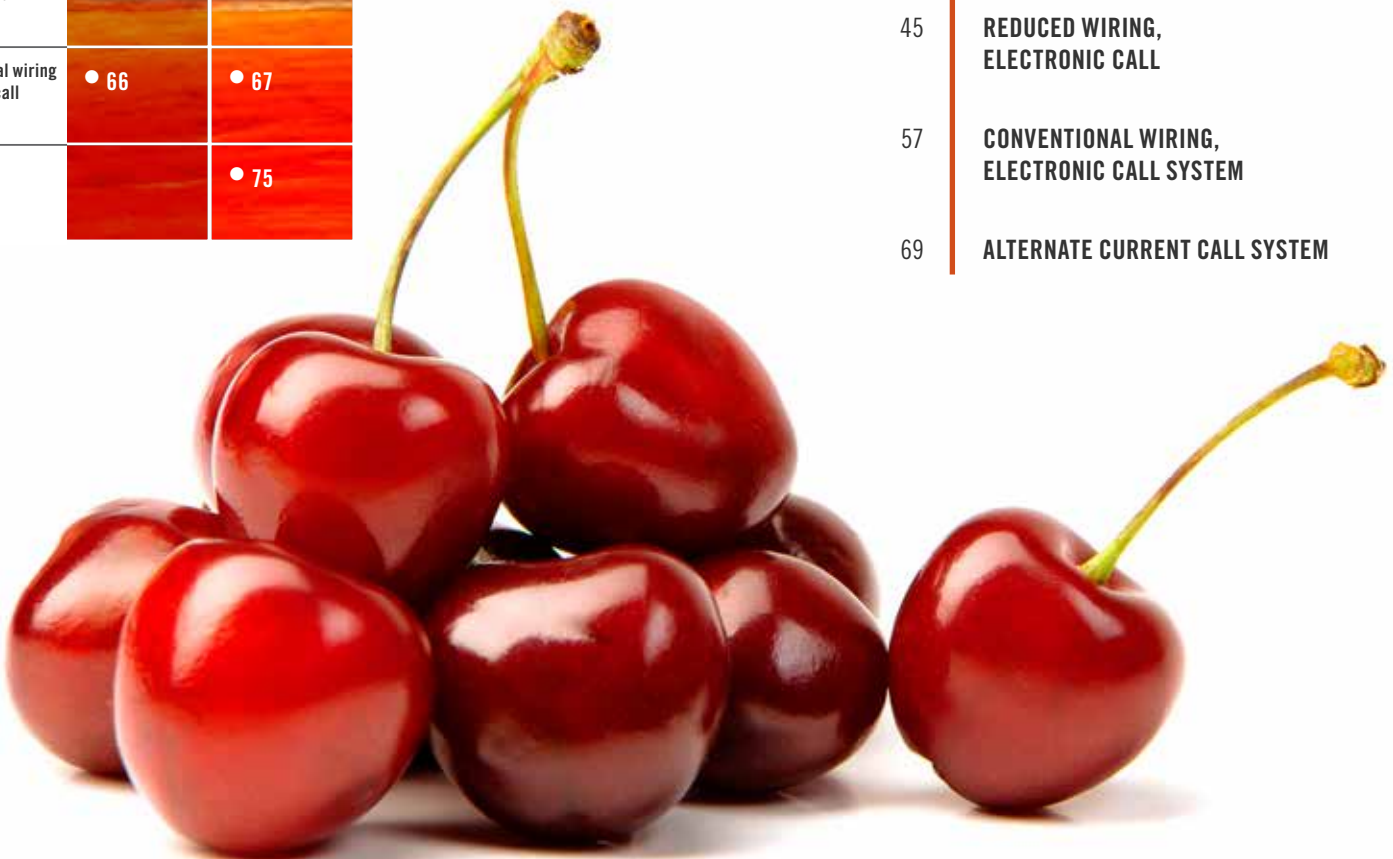
REDUCED WIRING,
ELECTRONIC CALL

57

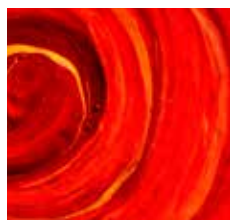
CONVENTIONAL WIRING,
ELECTRONIC CALL SYSTEM

69

ALTERNATE CURRENT CALL SYSTEM







46	INTERNAL STATIONS
47	Echos
	Exhito
	DOOR STATIONS
48	Agorà Light
49	Agorà
49	Profilo
51	Matrix Style
52	Mody
53	POWER SUPPLIES AND SERVICE MODULES
54	VIDEO KITS AND AUDIO KITS

REDUCED WIRING, ELECTRONIC CALL

If the traditional analogue technology is preferred to the digital, the **reduced wiring** solution is often the most suitable.

Reduced wiring means a Videointercom system or **electronic call** intercom with reduced number of cables referred to as **4+1** and **1+1** respectively which can seamlessly integrate with each other.

The advantage is a notable simplification of the installation, with the assurance of basic traditional functionality of the equipment and an improved quality/price ratio.

The reduced wiring systems have more flexible internal station aesthetic ranges available like Echos and Exhito, while for external stations you can choose between Agorà and Agorà Light, Profilo, Matrix Style and Mody, a wide variety of aesthetic choices



INTERNAL STATIONS

The Farfisa reduced wiring video or audio system with electronic calling offers different aesthetic ranges for internal stations: Echos and Exhito - Echos, with open voice functioning in colour has a modern design, while Exhito is more flexible in the solutions, even allowing the video to be in b/w version or audio-only.

INTERNAL STATIONS ECHOS



EH9161CW

Dim: mm 208x103x26
Colour: white

White hand-free monitor for conventional wiring. LCD 3.5" screen adjustable on horizontal axis. Function buttons for door opening, auto switch-on, bell exclusion (with LED indicating the setting), volume and brightness adjustment and 6 further buttons for intercommunicating and additional functions.



EH9161CT

Dim: mm 208x103x26
Colour: techno grey

Techno grey hand-free monitor for conventional wiring. LCD 3.5" screen adjustable on horizontal axis. Function buttons for door opening, auto switch-on, bell exclusion (with LED indicating the setting), volume and brightness adjustment and 6 further buttons for intercommunicating and additional functions.



INSTALLATION ELEMENTS

9083

Dim: mm 192x86x26
Back box for monitor Echos.

WA9100W

Dim: mm 192x86x26
Colour: white

Wall adaptor for surface mounting of white Echos monitors **EH9161CW**.

WA9100T

Dim: mm 192x86x26
Colour: techno

Wall adaptor for surface mounting of metal grey colour Echos monitors **EH9161CT**.

TA9160

Dim: mm 240x135x75

Table adaptor for Echos monitors to be mounted with **WA9100W** or **WA9100T**.



INTERNAL STATIONS EXHITO



EX3160C

Dim: mm 211x218x62
 Colour: white

Colour monitor LCD 4" provided with **7 function buttons** (2 for auto switch-on and door opening and further 5 for additional functions). It can be installed in conventional wiring system if mounted with WB3160.



EX3160

Dim: mm 211x218x62
 Colour: white

B/w flat 4" monitor provided with **7 function buttons** (2 for auto switch-on and door opening and further 5 for additional functions). It can be installed in conventional wiring system if mounted with WB3160.



EX3100C

Dim: mm 211x218x62
 Colour: white

Colour monitor LCD 4" screen, basic version, provided with **3 function buttons** for auto switch-on, door-opening and additional functions. For conventional wiring systems, electronic call if connected with WB3160 wall brackets.



EX311

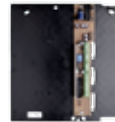
Dim: mm 65x218x62
 Colour: white

Basic intercom for 1+1 reduced wiring audio systems, supplied with 1 button for door-lock release and further 2 buttons for additional functions.

EX321

Dim: mm 83x218x62
 Colour: white

Intercom for reduced wiring, provided with 8 function buttons of which 1 for door-opening and further 7 for additional functions.



INSTALLATION ELEMENTS

WB3161

Wall bracket to mount on the wall EX3160C, EX3160 and EX3100C monitors in 4+1 reduced wiring.

TA3160

Table adaptor for Exhito **video**intercoms. Made in metal, it is provided with 2.4 m cable with 20 conductors.

TA320

Table adaptor for Exhito **intercoms**. Made in metal, it is provided with 2.4 m cable with 20 conductors.



ACCESSORIES

MC3000B

Interchangeable frame **blue "sky"** colour that replaces the 1 provided for the screen of Exhito monitor.

MC3000G

Interchangeable frame **green "spring"** colour that replaces the 1 provided for the screen of Exhito monitor.

MC3000T

Interchangeable frame **silver "champagne"** colour that replaces the 1 provided for the screen of Exhito monitor.



EX301

Additional button module for EX321 and EX311 intercoms.

EX304

Additional loudspeaker module to be inserted into EX321 and EX311 intercoms.

EX332

3 LED module to be inserted into EX321 to indicate auxiliary services.



DOOR STATIONS

The Farfisa 4 +1 video or 1 +1 audio reduced wiring system uses different aesthetic ranges for external stations: Agorà and Agorà Light, Profilo, Matrix Style or Mody. Specifically, Agorà and Agorà Light can be surface mounted into the wall, protruding very little from the wall because of the shallow depth of the base module. Profilo particularly stands out from the other modular stations thanks to its optimized dimensions, even in compositions where space is limited in width. Matrix Style - elegant and refined - offers anti-vandal resistance guaranteed by IP45 and IK09.

DOOR STATIONS AGORÀ LIGHT



AGL100V

Dim: mm 99x208x30

Composed by surface mounting box, front plate with frame, **cover ready for door speaker**, camera and **up to 2 buttons** call, diodes included, **Agorà Light** version in light grey. Reduced wiring technology.



AGL100A

Dim: mm 99x208x30

Composed by surface mounting box, front plate with frame, **cover ready for door speaker** and **up to 4 buttons** call, diodes included, **Agorà Light** version in light grey. Reduced wiring technology.



AGL100T

Dim: mm 99x208x30

Composed by surface mounting box and front plate with frame. Ready for installation of 8 single call button modules, **for combination** with audio-video or only audio door station. Nearby photo with push buttons configuration at maximum extension.



ACCESSORIES

AGL21

Single call button module.



AGL20

Blank button module.



DOOR STATIONS AGORÀ



AG100V

Dim: mm 99x208x30

Composed by surface mounting box, front plate with frame, **cover ready for door speaker**, camera and **up to 2 buttons**. Diodes included. Reduced wiring technology.



AG100A

Dim: mm 99x208x30

Composed by surface mounting box, front plate with frame, **cover ready for door speaker** and **up to 4 buttons**. Diodes included. Reduced wiring technology.



AG100T

Dim: mm 99x208x30

Composed by surface mounting box and front plate with frame. Ready for installation of 8 single call button modules, **for combination** with audio-video or only audio door station. Nearby photo with push buttons configuration at maximum extension.

ACCESSORIES



AG21

Single call button module.



AG20

Blank button module.

AGORÀ AND AGORÀ LIGHT AUDIO AND VIDEO MODULES



AG40CED

Colour camera and door speaker module for audio-video door station, reduced wiring technology.



AG30ED

Door speaker module for audio door station, reduced wiring technology.

INSTALLATION ELEMENTS

WA01AG

Aluminium wall adaptor that easily allows the **replacement** of a Mody external door station flush mounted into a Agorà surface mounted one.



DOOR STATIONS PROFILO



PL40PCED

Dim: mm 99x110x17

Colour camera module with 3.6 mm fixed lens with integrated door speaker **without call buttons** for 4+1 reduced wiring systems.



PL41PCED

Dim: mm 99x110x17

Colour camera module with 3.6 mm fixed lens with integrated door speaker with **1 call button** for 4+1 reduced wiring systems.



PL42PCED

Dim: mm 99x110x17

Colour camera module with 3.6 mm fixed lens with integrated door speaker with **2 call buttons** for 4+1 reduced wiring systems.



PL40PED

Dim: mm 99x110x17

B/w camera module with 3.6 mm fixed lens with integrated door speaker **without call buttons** for 4+1 reduced wiring systems.



PL41PED

Dim: mm 99x110x17

B/w camera module with 3.6 mm fixed lens with integrated door speaker **with 1 call button** for 4+1 reduced wiring systems.



PL10PED

Dim: mm 99x110x17

Audio module with integrated door speaker **without call buttons** for 1+1 reduced wiring systems.



PL11PED

Dim: mm 99x110x17

Audio module with integrated door speaker **with 1 call button** for 1+1 reduced wiring systems.



PL12PED

Dim: mm 99x110x17

Audio module with integrated door speaker **with 2 call buttons** for 1+1 reduced wiring systems.



Additional modules



PL21
Dim: mm 99x110x17
Module with **1** additional call **button**.



PL22
Dim: mm 99x110x17
Module with **2** additional call **buttons**.



PL23
Dim: mm 99x110x17
Module with **3** additional call **buttons**.



PL24
Dim: mm 99x110x17
Module with **4** additional call **buttons**.



PL226
Dim: mm 99x110x17
Module with **6** additional call **buttons on 2 rows**.



PL228
Dim: mm 99x110x17
Module with **8** additional call **buttons on 2 rows**.



PL50
Dim: mm 99x110x17
Street number module.



PL20
Dim: mm 99x110x17
Blank module.

241DMA
4-diode module to be inserted in button modules PL21, PL22, PL23, PL24, PL226 and PL228 for audio 1+1 and video 4+1 systems.



INSTALLATION ELEMENTS PROFILE

PL71
Dim: mm 91x133x47
Back box for 1 module.

PL72
Dim: mm 91x244.5x47
Back box for 2 modules.

PL73
Dim: mm 91x356x47
Back box for 3 modules.

PL81
Dim: mm 118x153x41
Hood cover for 1 module.

PL82
Dim: mm 118x264x41
Hood cover for 2 modules.

PL83
Dim: mm 118x376x41
Hood cover for 3 modules.

PL84
Dim: mm 217x264x41
Hood cover for 4 modules on 2 vertical rows.

PL86
Dim: mm 217x376x41
Hood cover for 6 modules on 2 vertical rows.

PL89
Dim: mm 316x376x41
Hood cover for 9 modules on 3 vertical rows.



PL91
Dim: mm 118x154x80
Surface mounting rain shelter for 1 module.

PL92
Dim: mm 118x265x80
Surface mounting rain shelter for 2 modules.

PL93
Dim: mm 118x377x80
Surface mounting rain shelter for 3 modules.

PL94
Dim: mm 217x264x80
Surface mounting rain shelter for 4 modules on 2 vertical rows.

PL96
Dim: mm 217x376x80
Surface mounting rain shelter for 6 modules on 2 vertical rows.

PL99
Dim: mm 316x376x80
Surface mounting rain shelter for 9 modules on 3 vertical rows.



DOOR STATIONS MATRIX STYLE



MAS43CED

Dim: mm 115x115
Colour **camera** and audio module with **1 call button**. Autoiris 3.6 mm lens. For 4+1 reduced wiring systems and for DF6000 digital systems.



MAS11PED

Dim: mm 115x115
Audio module with **door speaker** and **1 call button** for 1+1 intercom systems electronic call.



MAS22

Dim: mm 115x115
Additional module with **2 call buttons**.



MAS24

Dim: mm 115x115
Additional module with **4 call buttons**.



MAS20

Dim: mm 115x115
Blank module.

241DMA

4-diode module to be inserted in button modules MAS22, MAS24 for reduced wire technology.



INSTALLATION ELEMENTS MATRIX STYLE

MAS61

Dim: mm 140x140
Front frame in matt titanium grey colour for 1 module.

MAS62

Dim: mm 140x257
Front frame in matt titanium grey colour for 2 modules.

MAS63

Dim: mm 140x374
Front frame in matt titanium grey colour for 3 modules.

MA71

Dim: mm 128x128x65
Back box for 1 module.

MA72

Dim: mm 128x245x65
Back box for 2 modules.

MA73

Dim: mm 128x362x65
Back box for 3 modules.

MA91

Dim: mm 146x145x92
Surface mounting rain shelter for 1 module.

MA92

Dim: mm 146x262x92
Surface mounting rain shelter for 2 modules.

MA93

Dim: mm 146x379x92
Surface mounting rain shelter for 3 modules.



DOOR STATIONS MODY



MD41D

Dim: mm 124x90x18
B/w **video** module with 3.6 mm fixed lens for 4+1 reduced wiring systems.



MD10ED

Dim: mm 124x90x18
Audio module with integrated door speaker for 1+1 reduced wiring systems.



MD11ED

Dim: mm 124x90x18
Audio module with integrated door speaker with **1 call button** for 1+1 reduced wiring systems.



MD12ED

Dim: mm 124x90x18
Audio module with integrated door speaker with **2 call buttons** for 1+1 reduced wiring systems.



Additional modules

MD21

Dim: mm 124x90x18
Module with **1 additional call button**.



MD22

Dim: mm 124x90x18
Module with **2 additional call buttons**.



MD23

Dim: mm 124x90x18
Module with **3 additional call buttons**.



MD24

Dim: mm 124x90x18
Module with **4 additional call buttons**.



MD222

Dim: mm 124x90x18
Module with **2 additional call buttons on 2 rows**.



MD224

Dim: mm 124x90x18
Module with **4 additional call buttons on 2 rows**.



MD226

Dim: mm 124x90x18
Module with **6 additional call buttons on 2 rows**.



MD228

Dim: mm 124x90x18
Module with **8 additional call buttons on 2 rows**.



MD20

Dim: mm 124x90x18
Blank module.



MD50

Dim: mm 124x90x18
Street number module.

241D

2-diode module to be inserted in button modules MD21, MD22, MD23, MD24, MD222, MD224, MD226 and MD228.

INSTALLATION ELEMENTS MODY



MD71

Dim: mm 124x121.5x64

Back box complete with module frame for 1 module

MD72

Dim: mm 124x213x64

Back box complete with module frame for 2 modules.

MD73

Dim: mm 124x304.5x64

Back box complete with module frame for 3 modules.

MD74

Dim: mm 124x395x64

Back box complete with module frame for 4 modules.



MD81

Dim: mm 151x140x40

Hood cover for 1 module.

MD82

Dim: mm 151x231.5x40

Hood cover for 2 modules.

MD83

Dim: mm 151x323x40

Hood cover for 3 modules.

MD804

Dim: mm 151x414.5x40

Hood cover for 4 modules.

MD84

Dim: mm 276x231.5x40

Hood cover for 4 modules on 2 rows.

MD86

Dim: mm 276x323x40

Hood cover for 6 modules on 2 rows.



MD91

Dim: mm 151x140x80

Surface mounting rain shelter for 1 module.

MD92

Dim: mm 151x231.5x80

Surface mounting rain shelter for 2 modules.

MD93

Dim: mm 151x323x80

Surface mounting rain shelter for 3 modules.

MD94

Dim: mm 276x231.5x80

Surface mounting rain shelter for 4 modules on 2 rows.

MD96

Dim: mm 276x323x80

Surface mounting rain shelter for 6 modules on 2 rows.

POWER SUPPLIES AND SERVICE MODULES



1181E

Timed power supply - 127-230 Vac. 48VA outputs protected against overloading and short circuits. Output voltages: 13 Vac and 21 Vdc. Certification: VDE. 8 A modules in DIN bar.

PRS210

15VA transformer. 127-230V. 13 Vac. VDE certification. 3 DIN modules in DIN bar, or it can be mounted on the wall.

PRS210ED

15VA transformer with electronic ringer for 1+1 audio installations. 127-230V. 13 Vac. 4 A modules in DIN bar.

1443ED

System module for intercommunication service in reduced wiring. 6 A modules in DIN bar.

DV2D

2-output floor distributor. Power supply: 12/21 Vdc.

DV4D

4-output floor distributor. Power supply: 12/21 Vdc.

1473

4-exchange switcher for automatic switching of 2 inputs. 8 A modules in DIN bar.

1471

2 command input relay unit (12 Vac; 12/24 Vdc). 3 A modules in DIN bar.

1471E

3 command input relay unit (12 Vac; 12/24 Vdc and electronic). Provided with timed output for systems with electronic call and private conversation. 4 A modules in DIN bar.

1472

2-way exchanger (1A, 24V) 3 command input: 12 Vdc/Vac, 24 Vdc and electronic note. Mountable in 3 A DIN module.

RL36

Relay module with one exchange (1A, 24V) to be integrated inside intercoms, it permits to drive 12 Vdc/Vac signal, electronic note and EC ground.

RL37D

It can drive the chime for intercoms and video intercoms, mountable on 4 A DIN module. 1 free supplementary contact is available, with electronic note.

1281

Stabilised power supply 230-127 Vac, 48VA, outputs protected against overloading and short circuits. Output voltages: 13 Vac and 21 Vdc. Certification: VDE. 8 A modules on DIN bar.





VIDEO KITS AND AUDIO KITS

The one or two way solutions kits are very popular and they are easy to install because of the simple and intuitive wiring as the box contains all the material needed for installation but the cables.

ECHOS-AGORÀ LIGHT SERIES

EH9161AGLCW

Colour one-way video kit with white Echos internal station and Agorà Light door station.

EH9161AGLCT

Colour one-way video kit with metal grey colour Echos internal station and Agorà Light door station.

ECHOS-AGORÀ SERIES



EH9161AGCW

Colour one-way video kit with white Echos internal station and Agorà door station.



EH9161AGCT

Colour one-way video kit with metal grey colour Echos internal station and Agorà door station.

ECHOS-PROFILO SERIES



EH9161PLCW

Colour one-way video kit with white Echos internal station and Profilo door station.



EH9161PLCT

Colour one-way video kit with metal grey colour Echos internal station and Profilo door station.

EH9161PLCW/2

Colour two-way video kit with white Echos internal station and Profilo door station.

EH9161PLCT/2

Colour two-way video kit with metal grey colour Echos internal station and Profilo door station.

EXHITO-AGORÀ LIGHT SERIES



EX3161AGLC

Colour one-way video kit with Exhito internal station and Agorà Light door station.

EX3161AGL

B/w one-way video kit with Exhito internal station and Agorà Light door station.

EX3111AGLC

Colour one-way video kit with Exhito internal station basic model and Agorà Light door station.

EXHITO-AGORÀ SERIES

EX3161AGC

Colour one-way video kit with Exhito internal station and Agorà door station.

EX3161AG

B/w one-way video kit with Exhito internal station and Agorà door station.

EX3111AGC

Colour one-way video kit with Exhito internal station basic model and Agorà door station.

EXHITO-PROFILO SERIES



EX3161PLC

Colour one-way video kit with Exhito internal station and Profilo door station.

EX3161PL

B/w one-way video kit with Exhito internal station and Profilo door station.

EX3111PLC

Colour one-way video kit with Exhito internal station basic model and Profilo door station.

EX3161PLC/2

Two way colour video kit with Exhito internal station and Profilo door station

EX3161PL/2

Two way b/w video kit with Exhito internal station and Profilo door station.

EX3111PLC/2

Two way colour video kit with Exhito internal station basic model and Profilo door station.



- **1AEXD**
Audio one-way with Exhito internal station and Agorà door station.
- **1PEXD**
Audio one-way with Exhito internal station and Profilo door station.
- **2PEXD**
Audio two-way with Exhito internal station and Profilo door station.



- **1CKD**
Audio one-way with Exhito internal station and door station flush mounted Click series.
- **1CKSD**
Audio one-way with Exhito internal station and door station surface mounted Click series.
- **2CKD**
Audio two-way with Exhito internal station and door station flush mounted Click series.
- **2CKSD**
Audio two-way with Exhito internal station and door station surface mounted Click series.



1PEXFD
One way audio kit with Exhito indoor station and Profilo external station equipped with access control keypad (for more details on FC52PL refer to page 87).

VIDEO KIT / AUDIO KIT COMPOSITION

	KITS	INTERNAL STATIONS	DOOR STATIONS	POWER SUPPLY
👁️ ●●● One-way b/w	EX3161AGL	EXHITO EX3160+WB3161	AGORÀ LIGHT AG40CED+AGL100V+AGL21+AGL20	1181E
	EX3161AG	EXHITO EX3160+WB3161	AGORÀ AG40CED+AG100V+AG21+AG20	1181E
	EX3161PL	EXHITO EX3160+WB3161	PROFILO PL41PED+PL71	1181E
👁️ ●●● One-way colour	EH9161AGLCW	ECHOS EH9161CW+9083+WA9100W	AGORÀ LIGHT AG40CED+AGL100V+AGL21+AGL20	1181E
	EH9161AGLCT	ECHOS EH9161CT+9083+WA9100T	AGORÀ LIGHT AG40CED+AGL100V+AGL21+AGL20	1181E
	EH9161AGCW	ECHOS EH9161CW+9083+WA9100W	AGORÀ AG40CED+AG100V+AG21+AG20	1181E
	EH9161AGCT	ECHOS EH9161CT+9083+WA9100T	AGORÀ AG40CED+AG100V+AG21+AG20	1181E
	EH9161PLCW	ECHOS EH9161CW+9083+WA9100W	PROFILO PL41PCED+PL71	1181E
	EH9161PLCT	ECHOS EH9161CT+9083+WA9100T	PROFILO PL41PCED+PL71	1181E
	EX3161AGLC	EXHITO EX3160C+WB3161	AGORÀ LIGHT AG40CED+AGL100V+AGL21+AGL20	1181E
	EX3111AGLC	EXHITO EX3100C+WB3161	AGORÀ LIGHT AG40CED+AGL100V+AGL21+AGL20	1181E
	EX3161AGC	EXHITO EX3160C+WB3161	AGORÀ AG40CED+AG100V+AG21+AG20	1181E
	EX3111AGC	EXHITO EX3100C+WB3161	AGORÀ AG40CED+AG100V+AG21+AG20	1181E
	EX3161PLC	EXHITO EX3160C+WB3161	PROFILO PL41PCED+PL71	1181E
	EX3111PLC	EXHITO EX3100C+WB3161	PROFILO PL41PCED+PL71	1181E
👁️ ●●● Two-way b/w	EX3161PL/2	EXHITO 2xEX3160+WB3161	PROFILO PL42PCED+PL71	1181E
	👁️ ●●● Two-way colour	EH9161PLCW/2	ECHOS 2xEH9161CW+9083+WA9100W	PROFILO PL42PCED+PL71
EH9161PLCT/2		ECHOS 2xEH9161CT+9083+WA9100T	PROFILO PL42PCED+PL71	1181E
EX3161PLC/2		EXHITO 2xEX3160C+WB3161	PROFILO PL42PCED+PL71	1181E
EX3111PLC/2		EXHITO 2xEX3100C+WB3161	PROFILO PL42PCED+PL71	1181E
🔊 One-way audio	1AEXD	EXHITO EX321	AGORÀ AG100A+AG30ED+AG21+AG20	PRS210ED
	1PEXD	EXHITO EX321	PROFILO PL11PED+PL71	PRS210ED
	1PEXFD	EXHITO EX321	PROFILO PL11PED+FC52PL+PL92	PRS210ED
	1CKD	EXHITO EX311	flush mounted Click series	PRS210
	1CKSD	EXHITO EX311	surface mounted Click series	PRS210
🔊 Two-way audio	2PEXD	EXHITO 2xEX321	PROFILO PL12PED+PL71	PRS210ED
	2CKD	EXHITO 2xEX311	flush mounted Click series	PRS210
	2CKSD	EXHITO 2xEX311	surface mounted Click series	PRS210





INTERNAL STATIONS

- 58 Echos
- 59 Exhito

DOOR STATIONS

- 60 Profilo
- 62 Matrix Style
- 63 Mody

POWER SUPPLIES AND SERVICE MODULES

- 66 VIDEO KITS

- 67 AUDIO KITS

CONVENTIONAL WIRING, ELECTRONIC CALL SYSTEM

Some situations require the installation of a video or audio intercom using analogue technology with electronic calling and **traditional wiring**, so we refer to systems with coaxial or twisted pair video **7+1** or audio **4+1** cables.

On these occasions Farfisa offers various aesthetic ranges to choose the most suitable for the the installation and aesthetic needs. For internal stations, the Echos and Exhito lines are available, while external stations have the choice between the all the different modular options: Profilo, Matrix Style and Mody.



INTERNAL STATIONS

The *Echos* and *Exhito* internal stations are ranges available for conventional wiring with electronic calling, guaranteeing all the typical features required by basic service systems. The units on offer are in colour or b/w video or audio-only and are compatible with each other allowing mixed systems to meet the individual needs of users.

INTERNAL STATIONS ECHOS



EH9160CW

Dim: mm 208x103x26
Colour: white and grey

Colour hand-free **white** monitor for conventional wiring. LCD 3.5" screen adjustable on horizontal axis. Function buttons for door opening, auto switch-on, bell exclusion (with LED indicating the setting), volume and brightness adjustment and 6 further buttons for **intercommunicating** and additional functions.



EH9160CT

Dim: mm 208x103x26
Colour: metal grey colour

Colour hand-free **"techno" grey** monitor for conventional wiring. LCD 3.5" screen adjustable on horizontal axis. Function buttons for door opening, auto switch-on, bell exclusion (with LED indicating the setting), volume and brightness adjustment and 6 further buttons for **intercommunicating** and additional functions.



EH9100CW

Dim: mm 208x103x26
Colour: white and grey

Colour hand-free **white** monitor for conventional wiring. LCD 3.5" screen adjustable on horizontal axis. Function buttons for door opening, auto switch-on, bell exclusion (with LED indicating the setting), volume and brightness adjustment.



INSTALLATION ELEMENTS

9083

Dim: mm 192x86x26
Back box for monitor Echos.

WA9100W

Dim: mm 192x86x26
Colour: white
Wall adaptor for surface mounting of **white** Echos monitors.

WA9100T

Dim: mm 192x86x26
Colour: metal grey colour
Wall adaptor for surface mounting of **metal grey** colour Echos monitors.

TA9160

Dim: mm 240x135x75
Table adaptor for Echos monitors to be mounted with WA9100W or WA9100T.



INTERNAL STATIONS EXHITO



EX3160C

Dim: mm 211x218x62
Colour: white

Colour LCD 4" monitor provided with **7 function buttons** (2 for auto switch-on and door opening and further 5 for additional functions). It can be installed in conventional wiring system if mounted with WB3160.



EX3160

Dim: mm 211x218x62
Colour: white

B/w flat 4" monitor provided with **7 function buttons** (2 for auto switch-on and door opening and further 5 for additional functions). It can be installed in conventional wiring system if mounted with WB3160.



EX3100C

Dim: mm 211x218x62
Colour: white

Colour monitor LCD 4" screen, basic version, provided with **3 function buttons** for auto switch-on, door-opening and additional functions. For conventional wiring systems, electronic call if connected with WB3160 wall brackets.



EX310

Dim: mm 65x218x62
Colour: white

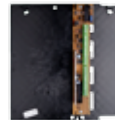
Intercom basic version for conventional wiring, electronic call, supplied with 1 push button for door-opening and additional functions.



EX320

Dim: mm 83x218x62
Colour: white

Intercom plus version for conventional wiring, provided with 2 function buttons of which 1 for door-opening and further 6 for additional functions.



INSTALLATION ELEMENTS

WB3160

Staffa con morsetti per collegamento e fissaggio a muro del monitor EX3160C, EX3160 e EX3100C in installazioni con tecnologia convenzionale (con cavo coassiale).

TA3160

Table adaptor for Exhito **video**intercoms. Made in metal, it is provided with 2.4 m cable with 20 conductors.

TA320

Table adaptor for Exhito **intercoms**. Made in metal, it is provided with 2.4 m cable with 20 conductors.



ACCESSORIES

MC3000B

Interchangeable frame **blue "sky"** colour that replaces the 1 provided for the screen of Exhito monitor.

MC3000G

Interchangeable frame **green "spring"** colour that replaces the 1 provided for the screen of Exhito monitor.

MC3000T

Interchangeable frame **silver "champagne"** colour that replaces the 1 provided for the screen of Exhito monitor.



EX301

Additional button module for EX320 and EX310 intercom.

EX304

Additional loudspeaker module for EX320 and EX310 intercom.

EX332

3 LED module for EX320 intercom to indicate auxiliary services.



DOOR STATIONS

The external stations that can be used for conventional wiring systems with electronic calling belong to the Profilo, Matrix Style and Mody ranges, all of which are modular with maximum space optimization. The use in an analogue technology accentuates the modular ability, emphasizing its versatility.

DOOR STATIONS PROFILO



PL40PC

Dim: mm 99x110x17

Colour camera module with 3.6 mm fixed lens with integrated door speaker **without call buttons** for conventional systems.



PL41PC

Dim: mm 99x110x17

Colour camera module with 3.6 mm fixed lens with integrated door speaker with **1 call button** for conventional systems.



PL42PC

Dim: mm 99x110x17

Colour camera module with 3.6 mm fixed lens with integrated door speaker with **2 call buttons** for conventional systems.



PL422PC

Dim: mm 99x110x17

Colour camera module with 3.6 mm fixed lens with integrated door speaker with **2 call buttons on 2 rows** for conventional systems.



PL424PC

Dim: mm 99x110x17

Colour camera module with 3.6 mm fixed lens with integrated door speaker with **4 call buttons on 2 rows** for conventional systems.



PL40P

Dim: mm 99x110x17

B/w camera module with 3.6 mm fixed lens with integrated door speaker **without call buttons** for conventional systems.



PL41P

Dim: mm 99x110x17

B/w camera module with 3.6 mm fixed lens with integrated door speaker with **1 call button** for conventional systems.



PL42P

Dim: mm 99x110x17

B/w camera module with 3.6 mm fixed lens with integrated door speaker with **2 call buttons** for conventional systems.



PL422P

Dim: mm 99x110x17

B/w camera module with 3.6 mm fixed lens with integrated door speaker with **2 call buttons on 2 rows** for conventional systems.



PL424P

Dim: mm 99x110x17

B/w camera module with 3.6 mm fixed lens with integrated door speaker with **4 call buttons on 2 rows** for conventional systems.



PL10P

Dim: mm 99x110x17

Audio module with integrated door speaker **without call buttons** for conventional wiring systems.



PL11P

Dim: mm 99x110x17

Audio module with integrated door speaker with **1 call button** for 1 conventional wiring systems.



PL12P

Dim: mm 99x110x17

Audio module with integrated door speaker with **2 call buttons** for conventional wiring systems.



PL122P

Dim: mm 99x110x17

Audio module with integrated door speaker with **2 call buttons on 2 rows** for conventional wiring systems.



PL124P

Dim: mm 99x110x17

Audio module with integrated door speaker with **4 call buttons on 2 rows** for conventional wiring systems.



PL21

Dim: mm 99x110x17

Module with **1 additional call button**.



PL22

Dim: mm 99x110x17

Module with **2 additional call buttons**.



PL23

Dim: mm 99x110x17

Module with **3 additional call buttons**.



PL24

Dim: mm 99x110x17

Module with **4 additional call buttons**.



PL226

Dim: mm 99x110x17

Module with **6 additional call buttons on 2 rows**.



PL228

Dim: mm 99x110x17

Module with **8 additional call buttons on 2 rows**.



PL50

Dim: mm 99x110x17

Street number module.



PL20

Dim: mm 99x110x17

Blank module.

Additional module

INSTALLATION ELEMENTS PROFILE



PL71

Dim: mm 91x133x47

Back box for 1 module.

PL72

Dim: mm 91x244.5x47

Back box for 2 modules.

PL73

Dim: mm 91x356x47

Back box for 3 modules.

PL81

Dim: mm 118x153x41

Hood cover for 1 module.

PL82

Dim: mm 118x264x41

Hood cover for 2 modules.

PL83

Dim: mm 118x376x41

Hood cover for 3 modules.

PL84

Dim: mm 217x264x41

Hood cover for 4 modules on 2 vertical rows.

PL86

Dim: mm 217x376x41

Hood cover for 6 modules on 2 vertical rows.

PL89

Dim: mm 316x376x41

Hood cover for 9 modules on 3 vertical rows.

PL91

Dim: mm 118x154x80

Surface mounting rain shelter for 1 module.

PL92

Dim: mm 118x265x80

Surface mounting rain shelter for 2 modules.

PL93

Dim: mm 118x377x80

Surface mounting rain shelter for 3 modules.

PL94

Dim: mm 217x264x80

Surface mounting rain shelter for 4 modules on 2 vertical rows.

PL96

Dim: mm 217x376x80

Surface mounting rain shelter for 6 modules on 2 vertical rows.

PL99

Dim: mm 316x376x80

Surface mounting rain shelter for 9 modules on 3 vertical rows.



DOOR STATIONS MATRIX STYLE



MAS10P

Dim: mm 115x115

Audio module with door speaker integrated for conventional wiring systems **without call buttons**.



MAS11P

Dim: mm 115x115

Audio module with door speaker integrated for conventional wiring systems with **1 call button**.



MAS12P

Dim: mm 115x115

Audio module with door speaker integrated for conventional wiring systems with **2 call buttons**.

ADDITIONAL BUTTONS MODULE



MAS22

Dim: mm 115x115

Additional module with **2 call buttons**.



MAS24

Dim: mm 115x115

Additional module with **4 call buttons**.



INSTALLATION ELEMENTS MATRIX STYLE



MAS61

Dim: mm 140x140

Front frame in matt titanium grey colour for 1 module.

MAS62

Dim: mm 140x257

Front frame in matt titanium grey colour for 2 modules.

MAS63

Dim: mm 140x374

Front frame in matt titanium grey colour for 3 modules.

MA71

Dim: mm 128x128x65

Back box for 1 module.

MA72

Dim: mm 128x245x65

Back box for 2 modules.

MA73

Dim: mm 128x362x65

Back box for 3 modules.

MA91

Dim: mm 146x145x92

Surface mounting rain shelter for 1 module.

MA92

Dim: mm 146x262x92

Surface mounting rain shelter for 2 modules.

MA93

Dim: mm 146x379x92

Surface mounting rain shelter for 3 modules.

DOOR STATIONS MODY



MD100

Dim: mm 124x90x18

Audio module with integrated door speaker for conventional wiring systems with 1 call button.



MD200

Dim: mm 124x90x18

Audio module with integrated door speaker for conventional wiring systems with 2 call buttons.



MD10

Dim: mm 124x90x18

Audio module ready for door speaker for conventional wiring systems without call buttons.



MD11

Dim: mm 124x90x18

Audio module ready for door speaker for conventional wiring systems with 1 call button.



MD12

Dim: mm 124x90x18

Audio module ready for door speaker for conventional wiring systems with 2 call buttons.



MD122

Dim: mm 124x90x18

Audio module ready for door speaker for conventional wiring systems with 2 call buttons on 2 rows.



MD124

Dim: mm 124x90x18

Audio module ready for door speaker for conventional wiring systems with 4 call buttons on 2 rows.



MD30

Speaker unit for 4+1 audio systems to be placed on the MD10, MD11, MD12, MD122, MD124 modules.



Additional buttons module



MD21
Dim: mm 124x90x18
Module with 1 additional call **button**.



MD22
Dim: mm 124x90x18
Module with 2 additional call **buttons**.



MD23
Dim: mm 124x90x18
Module with 3 additional call **buttons**.



MD24
Dim: mm 124x90x18
Module with 4 additional call **buttons**.



MD222
Dim: mm 124x90x18
Module with 2 additional call **buttons** on 2 rows.



MD224
Dim: mm 124x90x18
Module with 4 additional call **buttons** on 2 rows.



MD226
Dim: mm 124x90x18
Module with 6 additional call **buttons** on 2 rows.



MD228
Dim: mm 124x90x18
Module with 8 additional call **buttons** on 2 rows.



INSTALLATION ELEMENTS MODY

MD71
Dim: mm 124x121.5x64
Back box complete with module frame for 1 module.

MD72
Dim: mm 124x213x64
Back box complete with module frame for 2 modules.

MD73
Dim: mm 124x304.5x64
Back box complete with module frame for 3 modules.

MD74
Dim: mm 124x395x64
Back box complete with module frame for 3 modules.



MD81
Dim: mm 151x140x40
Hood cover for 1 module.

MD82
Dim: mm 151x231.5x40
Hood cover for 2 modules.

MD83
Dim: mm 151x232x40
Hood cover for 3 modules.

MD804
Dim: mm 151x414.5x40
Hood cover for 4 modules.

MD84
Dim: mm 276x231.5x40
Hood cover for 4 modules on 2 rows.

MD86
Dim: mm 276x323x40
Hood cover for 6 modules on 2 rows.



MD91
Dim: mm 151x140x80
Surface mounting rain shelter for 1 module.

MD92
Dim: mm 151x231.5x80
Surface mounting rain shelter for 2 modules.

MD93
Dim: mm 151x323x80
Surface mounting rain shelter for 3 modules.

MD94
Dim: mm 276x231.5x80
Surface mounting rain shelter for 4 modules on 2 rows.

MD96
Dim: mm 276x323x80
Surface mounting rain shelter for 6 modules on 2 rows.

POWER SUPPLIES AND SERVICE MODULES



1281

Stabilised power supply 230-127 Vac, 48VA, outputs protected against overloading and short circuits. Output voltages: 13 Vac and 21 Vdc. Certification: VDE. 8 A modules on DIN bar.



1281E

Power supply with timer integrated 230-127 Vac/48 VA outputs protected against overloading and short circuits. Provided with note generator for videointercom systems with electronic call. Output voltages: 13 Vac and 21 Vdc. Certification: VDE. 8 A modules on DIN bar.



1282E

Audio-video timer. Allows operation in timer mode of a video system with electronic call, automatic deletion at the end of the conversation and the switching on of one video intercom at a time. Mountable on 6 A DIN module. Art. 1281 and 1282E can be used instead of 1281E in case of intercommunicating service or automatic switch-off of conversation are required.



PRS210

15VA transformer. 127-230V. 13 Vac. VDE certification. 3 DIN modules in DIN bar, or it can be mounted on the wall. Can be used to power art. 2223, 2223C, 2273 and 2281.

PRS240

18 VA power supply with 2 modulated electronic ringers module. 8 Vdc-13 Vac. VDE certification. 6 A modules in DIN bar.

PRS226E

18VA power supply-commutator with 2 electronic ringers. 8 Vdc-13 Vac. 6 A modules in DIN bar. For intercoms connected to external door station.

476

Video amplifier-distributor with 1 input and 5 outputs. Power supply: 21-24 Vdc. 8 A modules on DIN bar.

1273TV

7-exchange exchanger for automatic switching of 2 audio-video inputs. 8 A modules in DIN bar.

1304

Multipolar cable for video intercom systems with a maximum extension of 100m. Made up of 10 wires of different sections and 75Ω coaxial cable.

CV02

Placed inside the external door station, it sounds in case of effected calling.

1443E

Intercommunication service module to be inserted inside the 1282E timer. It can be used when there is only one intercommunication service in the system.



DV2

2-output video distributor coax video system. Power supply: 12 Vdc.



DV4

4-output video distributor coax video system. Power supply: 12 Vdc.



DV2D

2-output floor distributor pair cable connection. Power supply: 12/21 Vdc.



DV4D

4-output floor distributor pair cable connection. Power supply: 12/21 Vdc.

CV01

Converter of video signal by non-balanced line to balanced line.

1473

4-exchange switcher for automatic switching of 2 inputs. 8 A modules in DIN bar.

1471

2-command input relay unit (12 Vac; 12/24 Vdc). 3 A modules in DIN bar.

1471E

3-command input relay unit (12 Vac; 12/24 Vdc and electronic). Provided with timed output for systems with electronic call and private conversation. 4 A modules in DIN bar.

1472

2-exchange exchanger (1A, 24V) 3 command input: 12 Vdc/Vac, 24 Vdc and electronic note. Mountable on 3 A DIN module.

GN30

Generator of 3 electronic ringers. For differentiated calls from landings or various external door stations.

RL36

Relay module with one exchange (1A, 24V) to be integrated inside intercoms, it permits to drive 12 Vdc/Vac signal, electronic note and EC ground.

RL37

It can drive the chime for intercoms and video intercoms, mountable on 4 A DIN module. 1 free supplementary contact is available, with electronic note.

SR41

Electronic buzzer module for parallel call of various intercoms in systems with electronic call.

CV03

Video signal converter from twisted pair to coaxial cable.



VIDEO KITS

The video kit is an excellent solution for one family installations. By adopting the single module of the Profilo series, the choice is between Echos or Exhito monitors. Ready and complete with all the components for mounting, you can choose between b/w or colour picture. Packed in carton case.

ECHOS-PROFILO SERIES



EH9160PLCW

Colour one-way video kit with white Echos internal station and Profilo door station.



EH9160PLCT

Colour one-way video kit with metal grey colour Echos internal station and Profilo door station.

EXHITO-PROFILO SERIES



EX3160PLC

Colour one-way video kit with Exhito internal station and Profilo door station.

EX3160PL

B/w one-way video kit with Exhito internal station and Profilo door station.



KITS COMPOSITION

	KITS	INTERNAL STATIONS	DOOR STATIONS	POWER SUPPLY
👁️ ●●● One-way b/w	EX3160PL	EXHITO EX3160+WB3160	PROFILO PL41P+PL71	1281E
👁️ ●●● One-way colour	EH9160PLCW	ECHOS EH9160CW+9083+WA9100W	PROFILO PL41PC+PL71	1282E+1281
	EH9160PLCT	ECHOS EH9160CT+9083+WA9100T	PROFILO PL41PC+PL71	1282E+1281
	EX3160PLC	EXHITO EX3160C+WB3160	PROFILO PL41PC+PL71	1281E



AUDIO KITS

For one or two family Intercom systems, audio kits are available with Exhito internal station and the new Click series small and elegant external station. The choice varies not only by the number of users, but also by the wall mounting option: flush mounted or recessed according to needs.



■ **1CK**
Audio one-way with Exhito internal station and door station flush mounted Click series.

2CK
Audio two-way with Exhito internal station and door station flush mounted Click series.

1CKS
Audio one-way with Exhito internal station and door station surface mounted Click series.

2CKS
Audio two-way with Exhito internal station and door station surface mounted Click series.



KITS COMPOSITION

		KITS	INTERNAL STATIONS	DOOR STATIONS	POWER SUPPLY
🔊	One-way audio	1CK	EXHITO EX310	flush mounted Click series	PRS210
		1CKS	EXHITO EX310	surface mounted Click series	PRS210
🔊	One-way audio	2CK	EXHITO 2xEX310	flush mounted Click series	PRS210
		2CKS	EXHITO 2xEX310	surface mounted Click series	PRS210





70	INTERNAL STATIONS
70	700 Project
71	DOOR STATIONS
72	Profilo Matrix Style
73	Mody
75	POWER SUPPLIES AND SERVICE MODULES
75	AUDIO KITS

ALTERNATE CURRENT CALL SYSTEM

In the catalogue there is also some unmissable intercom equipment that uses the analogue system for **alternate current call system** as points of reference for many existing systems or specific requests.

The selection of this technology only provides the **audio solution** for which there are no internal stations for video, among the other options the Project Line and 724N continue to deliver quality and reliability. Matrix Style, Profilo and Mody are possible alternatives for the outdoor stations.

There is no rigidity in designing Farfisa systems, which by using the appropriate system components means that the installation of these components can also exploit of the electronic call system technology.



INTERNAL STATIONS

For analogue alternate current call systems, the internal intercom stations available with this technology are the 724N and various versions of the Project range; these are flexible and modern with some accessories that complete the line. They undoubtedly provide maximum robustness and a more consolidated design.

INTERNAL STATIONS 700



724N

Dim: mm 215x75x88
Colour: beige

Intercom for alternate current call 4+1 systems. Complete with carbon microphone, buzzer, door opener button and spiral cord.



INTERNAL STATIONS PROJECT



PT510W

Dim: mm 214x77x72
Colour: white

Basic intercoms with door-opener button, spiral cord, electronic microphone, wall mounting and **buzzer** for 4+1 intercom systems with alternate current call. Also suitable for systems with electronic call.



PT520W

Dim: mm 214x86x72
Colour: white

Extendable intercom, for additional or intercommunication functions, for 4+1 systems with alternate current call. Compatible with 3+1 systems. Complete with electronic microphone, buzzer, spiral cord and 2 buttons extendable to 10 for door-opener, **intercom calls** and various services.



PT524W

Dim: mm 77x214x72
Colour: white

Basic intercom, for 4+1 systems with alternate current call. Complete with door-opener, **carbon microphone**, buzzer, spiral cord. It can be used also in systems with electronic call.

ACCESSORIES PROJECT

PT501

Single button unit.

PT502

LED module for door open indication and other functions.

PT515

Switch module to cut out ringer (privacy) or other functions.

TA320

Table adaptor compatible with Project series. Made in metal, it is supplied with 2.4 m cable with 20 conductors.

SM50

Private conversation module for systems with alternate current call. When installed inside the intercom, it allows only the called user to be put in communication with the external door station.



DOOR STATIONS

External station ranges for analogue alternate current call systems are the Profilo, Matrix Style and Mody ranges. Profilo is the most suitable for situations where there is limited space available, thanks to the reduced size of the basic module in width and the possibility of a double button that allows further space saving. You may decide on the Matrix Style whenever an anti-vandal protection handset is required (IP45 and IK09 degrees of protection) but that does not leave out its special elegance. Mody is an evergreen solution for large numbers of users that allows space saving also because of the double button module facility.

DOOR STATIONS PROFILO



PL10P

Dim: mm 99x110x17
Audio module with integrated **door speaker without call buttons** for conventional wiring systems.



PL11P

Dim: mm 99x110x17
Audio module with integrated **door speaker with 1 call button** for 1 conventional wiring systems.



PL12P

Dim: mm 99x110x17
Audio module with integrated **door speaker with 2 call buttons** for conventional wiring systems.



PL122P

Dim: mm 99x110x17
Audio module with integrated **door speaker with 2 call buttons on 2 rows** for conventional wiring systems.



PL124P

Dim: mm 99x110x17
Audio module with integrated **door speaker with 4 call buttons on 2 rows** for conventional wiring systems.



Additional modules

PL21

Dim: mm 99x110x17
Module with **1 additional call button**.



PL22

Dim: mm 99x110x17
Module with **2 additional call buttons**.



PL23

Dim: mm 99x110x17
Module with **3 additional call buttons**.



PL24

Dim: mm 99x110x17
Module with **4 additional call buttons**.



PL226

Dim: mm 99x110x17
Module with **6 additional call buttons on 2 rows**.



PL228

Dim: mm 99x110x17
Module with **8 additional call buttons on 2 rows**.



PL50

Dim: mm 99x110x17
Street number module.



PL20

Dim: mm 99x110x17
Blank module.

INSTALLATION ELEMENTS PROFILO



PL71

Dim: mm 91x133x47

Back box for 1 module.

PL72

Dim: mm 91x244.5x47

Back box for 2 modules.

PL73

Dim: mm 91x356x47

Back box for 3 modules.

PL81

Dim: mm 118x153x41

Hood cover for 1 module.

PL82

Dim: mm 118x264x41

Hood cover for 2 modules.

PL83

Dim: mm 118x376x41

Hood cover for 3 modules.

PL84

Dim: mm 217x264x41

Hood cover for 4 modules on 2 vertical rows.

PL86

Dim: mm 217x376x41

Hood cover for 6 modules on 2 vertical rows.

PL89

Dim: mm 316x376x41

Hood cover for 9 modules on 3 vertical rows.

PL91

Dim: mm 118x154x80

Surface mounting rain shelter for 1 module.

PL92

Dim: mm 118x265x80

Surface mounting rain shelter for 2 modules.

PL93

Dim: mm 118x377x80

Surface mounting rain shelter for 3 modules.

PL94

Dim: mm 217x264x80

Surface mounting rain shelter for 4 modules on 2 vertical rows.

PL96

Dim: mm 217x376x80

Surface mounting rain shelter for 6 modules on 2 vertical rows.

PL99

Dim: mm 316x376x80

Surface mounting rain shelter for 9 modules on 3 vertical rows.



DOOR STATIONS MATRIX STYLE



MAS10P

Dim: mm 115x115

Audio module with **door speaker** integrated for conventional wiring system **without call buttons**.



MAS11P

Dim: mm 115x115

Audio module with **door speaker** integrated for conventional wiring system with **1 call button**.



MAS12P

Dim: mm 115x115

Audio module with **door speaker** integrated for conventional wiring system with **2 call buttons**.

Additional buttons module



MAS22

Dim: mm 115x115

Additional module with **2 call buttons**.



MAS24

Dim: mm 115x115

Additional module with **4 call buttons**.



INSTALLATION ELEMENTS MATRIX STYLE



MAS61

Dim: mm 140x140

Front frame matt titanium grey colour for 1 module.

MAS62

Dim: mm 140x257

Front frame matt titanium grey colour for 2 modules.

MAS63

Dim: mm 140x374

Front frame matt titanium grey colour for 3 modules.

MA71

Dim: mm 128x128x65

Back box for 1 module.

MA72

Dim: mm 128x245x65

Back box for 2 modules.

MA73

Dim: mm 128x362x65

Back box for 3 modules.

MA91

Dim: mm 146x145x92

Surface mounting rain shelter for 1 module.

MA92

Dim: mm 146x262x92

Surface mounting rain shelter for 2 modules.

MA93

Dim: mm 146x379x92

Surface mounting rain shelter for 3 modules.

DOOR STATIONS MODY



MD100

Dim: mm 124x90x18

Audio module with integrated door speaker for conventional wiring systems with 1 call button.



MD200

Dim: mm 124x90x18

Audio module with integrated door speaker for conventional wiring systems with 2 call buttons.



MD10

Dim: mm 124x90x18

Audio module ready for door speaker for conventional wiring systems without call buttons.



MD11

Dim: mm 124x90x18

Audio module ready for door speaker for conventional wiring systems with 1 call button.



MD12

Dim: mm 124x90x18

Audio module ready for door speaker for conventional wiring systems with 2 call buttons.



MD122

Dim: mm 124x90x18

Audio module ready for door speaker for conventional wiring systems with 2 call buttons on 2 rows.



MD124

Dim: mm 124x90x18

Audio module ready for door speaker for conventional wiring systems with 4 call buttons on 2 rows.



MD30

Speaker unit for 4+1 audio systems to be placed on the MD10, MD11, MD12, MD122, MD124 modules.



Additional buttons module



MD21
Dim: mm 124x90x18
Module with 1 additional call **button**.



MD22
Dim: mm 124x90x18
Module with 2 additional call **buttons**.



MD23
Dim: mm 124x90x18
Module with 3 additional call **buttons**.



MD24
Dim: mm 124x90x18
Module with 4 additional call **buttons**.



MD222
Dim: mm 124x90x18
Module with 2 additional call **buttons** in 2 rows.



MD224
Dim: mm 124x90x18
Module with 4 additional call **buttons** in 2 rows.



MD226
Dim: mm 124x90x18
Module with 6 additional call **buttons** in 2 rows.



MD228
Dim: mm 124x90x18
Module with 8 additional call **buttons** in 2 rows.



INSTALLATION ELEMENTS MODY

MD71
Dim: mm 124x121.5x64
Back box for 1 module.

MD72
Dim: mm 124x213x64
Back box for 2 modules.

MD73
Dim: mm 124x304.5x64
Back box for 3 modules.

MD74
Dim: mm 124x395x64
Back box for 4 modules.



MD81
Dim: mm 151x140x40
Hood cover for 1 module.

MD82
Dim: mm 151x231.5x40
Hood cover for 2 modules.

MD83
Dim: mm 151x323x40
Hood cover for 3 modules.

MD804
Dim: mm 151x414.5x40
Hood cover for 4 modules.

MD84
Dim: mm 276x231.5x40
Hood cover for 4 modules on 2 vertical rows.

MD86
Dim: mm 276x323x40
Hood cover for 6 modules on 2 vertical rows.



MD91
Dim: mm 151x140x80
Surface mounting rain shelter for 1 module.

MD92
Dim: mm 151x231.5x80
Surface mounting rain shelter for 2 modules.

MD93
Dim: mm 151x323x80
Surface mounting rain shelter for 3 modules.

MD94
Dim: mm 276x231.5x80
Surface mounting rain shelter for 4 modules on 2 vertical rows.

MD96
Dim: mm 276x323x80
Surface mounting rain shelter for 6 modules on 2 vertical rows.

POWER SUPPLIES AND SERVICE MODULES

SR40

Electronic ringer module for systems with alternate current call. When installed inside the intercom, it allows the buzzer call to be replaced by the electronic call or a call to be added, e.g. a call from landing.

SR41

Electronic buzzer module.

1473

4-exchange exchanger for automatic switching of 2 inputs. 8 A modules in DIN bar.

1471

2 command input relay unit (12 Vac; 12/24 Vdc). 3 A modules in DIN bar.



1472

2-exchange exchanger (1A, 24V) 3 command input: 12 Vdc/Vac, 24 Vdc and electronic note. Mountable on 3 A DIN module.

GN30

Generator of 3 electronic ringers. For differentiated calls from landings or various external door stations.

RL36

Relay module with one exchange (1A, 24V) to be integrated inside intercoms, it permits to drive 12 Vdc/Vac signal, electronic note and EC ground.

PRS210

15VA transformer. 127-230V. 13 Vac. VDE certification. 3 DIN modules in DIN bar, or it can be mounted on the wall. Can be used to power art. 2223, 2223C, 2273 and 2281.



PRS220

15VA power supply. 6 Vdc-13 Vac. VDESASO certifications. 4 A modules in DIN bar.



PRS226

18VA power supply-commutator. 8 Vdc-13 Vac. VDE certification. 6 A modules in DIN bar. For intercoms connected to external door station.



PRS231

Power supply 8 Vdc-13 VAC. 6 A DIN module. It is able to supply intercommunicating intercom systems without door station.

PRS235

18VA power supply with call reset. 8 Vdc-13 Vac. VDE certification. 6 A modules in DIN bar. For private conversation systems.



AUDIO KITS

The kits are very appreciated because easy to be used. They are organised ready for installation: in the box you will find all components for assembly, namely the internal station, external station and power supply, accompanied by an instruction manual. All models are one or two family, except for the Victory family that offers solutions from 1 to 12 users.

1PTMW

Audio one-way kit with Project internal station and Mody door station with integrated door speaker.

2PTMW

Audio two-way kit with Project internal station and Mody door station with integrated door speaker.

1MPW

Audio one-way kit with Project internal station and Mody door station with separate door speaker.

2MPW

Audio two-way kit with Project internal station and Mody door station with separate door speaker.

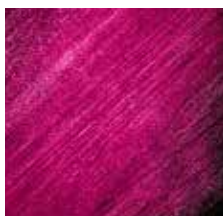
1V/12V

Audio one-way Victory series (or multi-way up to 12) kit with Project internal station and ErreP/R door station.

KITS COMPOSITION

	KITS	INTERNAL STATIONS	DOOR STATIONS	POWER SUPPLY
One-way audio	1PTMW	PROJECT PT510W	MODY MD71+MD100	PRS210
	1MPW	PROJECT PT510W	MODY MD71+MD11+MD30	PRS220
Two-way audio	2PTMW	PROJECT 2x PT510W	MODY MD71+MD200	PRS210
	2MPW	PROJECT 2x PT510W	MODY MD71+MD12+MD30	PRS220
One/Two-way audio	1V/12V	PROJECT 1/12xPT524SW	ERREP/R RP1/RP12+MD30	PRS220





80	INTERNAL STATIONS myLogic
81	DOOR STATIONS
82	SYSTEM ELEMENTS
82	POWER SUPPLIES AND SERVICE MODULES
83	VIDEO KITS

myLogic

HOME AUTOMATION

With myLogic, the range developed and designed for home automation, the Farfisa selection enters the world of home automation.

It is a result of constant research and is undoubtedly at the cutting edge in various respects: concept, technology, power, design and usability. MyLogic incorporates advanced Videointercom features with many possibilities for home automation, it is easy to install and simple to use. Based on Duo System digital technology, it allows you to control and manage all the main functions from a single point in your home: from access control to the heating system, to air conditioning units, up to the events programming, everything tailored to the user.



MYLOGIC HOME AUTOMATION

The **myLogic terminal** is at the heart of an integrated home automation-Videointercom system that uses **Duo System digital technology**. Consequently myLogic makes all the characteristics and the advantages that characterize the Duo System valid, first and foremost the extreme simplicity of installation thanks to the 2 non-polarized wires. The Duo System system offers a wide variety of operation and installation options, allowing even complex systems with a large number of users. Therefore the broadest performance is assured: up to 200 internal stations with the ability to integrate other monitor ranges alongside myLogic and multiple main and secondary external stations. myLogic is therefore able to effectively manage the different home automations within a complex and multi-user system.

In the detail of the operation, the myLogic terminal manages the connected devices through the actuator to run the commands set. The main areas of work manage **Video intercom**, **Thermoregulation** and the **Actuators/Events** section, i.e. the possibility of tripping the device in certain situations.

All functions are managed with simple gestures like touching your finger or the supplied stylus directly on the screen or by using the 4 function keys at the bottom of the device. MyLogic is also equipped with a memory card reader to import your photos (photo frame) that can also be used for creating custom screen savers and technology upgrades or for the particular needs of the user.

www.mylogic.it

ACI Farfisa also dedicates a website to myLogic, **www.mylogic.it** where you can find all the information, details and documentation for a detailed view of the range



Duo System

Door stations



Digital door-keeper exchanger



Surveillance cameras management



10 Functions to manage your home



CONTROL BOARD
Simple interface for easy access to myLogic functions and settings.

VIDEO INTERCOM
Control of received, dialled or missed calls from the door station. Stored images of callers.

INTERCOM/TEXTING
Intercom function to connect all house sectors and messaging service.

BLOCK NOTES
Memo text with acoustic warning activated at a set time.

ACTIONS
Home automation functions such as lighting, window shutters and garden watering...

EVENTS
Home automation control of dynamic functions such as door opening/closing, gas detection, lighting settings.

CLIMATE CONTROL
Automatic or manual control of central heating and air conditioning.

FAVOURITES
Personalization and optimisation of the access to myLogic functions according to demand.

PICTURES
Personalization of the home page screen by using standard pictures or user imported images.

SETTINGS
Simple and practical myLogic settings (audio, display, etc.).



Home Page



Video Intercom



Notes



Smart home



Images



Climate control



INTERNAL STATIONS

*Aci Farfisa Home automation conceives myLogic at the system centre of the system as a **Video intercom-home automation internal terminal**. The line includes in addition to the basic component, covers that can be interchanged to suit the look the internal environment, completed with some installation components to give a choice of **either surface or recessed mounting**, as an alternative to the **table support**. All details and proportions are treated in full respect of a product which makes prestige combined with practicality its strong point.*

INTERNAL STATIONS MYLOGIC



ML2262C

Dim: mm 154x154x30

Colour: metal grey and dark anthracite

Colour hand-free videointercom with home automation functions for **DuoSystem**. 4.3" LCD-TFT touchscreen, 16:9 format. 4 function buttons and instructions on the graphic interface (by finger touch or stylus supplied) for the classical videointercom functions and home automation features. In **videointercom** area door-lock, intercommunication, auto switch-on, missed chimes with visitor photo, block notes, memo. **Home automation** functions allow external devices control through specific interfaces. Software updating and imported personal pictures are possible through memory card.



INSTALLATION ELEMENTS

ML2083

Back box for myLogic monitors.

WA2160W

White wall adaptor for surface mounting of myLogic monitors. Made in plastic, it can be used in all the surface mounting installations of myLogic monitors, instead of the flush mounting.

WA2160T

Silver colour wall adaptor for surface mounting of myLogic monitors. Made in plastic, it can be used in all the surface mounting installations of myLogic monitors, instead of the flush mounting.

TA2160

Table adaptor for myLogic monitors, to be mounted with WA2160W or WA2160T, supplied with connection cables.

ACCESSORIES

MC2000W

White plastic cover for myLogic monitors. It allows the personalization of the videointercom, by changing the one supplied with the monitor.

MC2000T

Silver colour plastic cover for myLogic monitors. It allows the personalization of the videointercom, by changing the one supplied with the monitor.

myLogic with built-in back box



myLogic with wall adaptor for surface mounting





EXTERNAL STATIONS

MyLogic works with Duo System digital technology, and so takes advantage of all the system components such as external stations, any door keeper exchanger, power supplies and modules for complete installation and maximum performance.

*The external stations designed for Duo System are Agorà Light and Agorà, Profilo and Matrix Style, all modular and of high quality. In particular **Agorà Light** or **Agorà** are preferred in situations where reduced size in width is important. A further advantage is the fact that the module is already complete and ready for installation and comes flush mounted into the wall, so there is no need to break the wall. **Profilo** instead is the most flexible and compact range with digital calling modules or with traditional button modules, even for large numbers of users with multiple possibilities thanks to the double button that allows further space savings and various accessories in the range. **Matrix Style** anti-vandal designed, thanks to the IP45 and IK09 degrees, ensures maximum protection at the same time as offering elegance and flexibility.*



Discover all the details of the Duo system with all the available External Stations in the Digital Video intercom chapter. Page 19

SYSTEM ELEMENTS



PDX2000

Dim: mm 209x186x67
Colour: white

Digital door-keeper exchanger. Available functions: internal station-internal station and external station-internal station communication, auto-insertion on external door station, day/night shunted switching, lost calls management, guarantee of system working even with the door-keeper exchanger badly working. Further features: classification users groups, insertion on a busy user, opening of many doors even on non-specific demand, memo/ agenda, servant function, different colour for display lighting. Multiple door-keepers exchanger system allowed. Updating or data import through memory card. Call queuing and call booking not available.



ST7100CW

Dim: mm 156x224x61
Colour: white

Colour monitor 4" LCD screen, adjustable in inclination, auto switch-on button and an additional one.

INSTALLATION ELEMENTS AND ACCESSORIES

TA7100W

White table adaptor, for ST7100CW monitors. Complete with cable clamp, junction box and 2.4 m connection cable with 20 wires. To be used with WB7260 wall bracket.



WB7260

Wall bracket for ST7100CW monitors for connection to PDX2000 door-keeper exchanger.

POWER SUPPLIES AND SERVICE MODULES

2220S

Power supply for Duo System for conventional and digital door stations. Output 13 Vac/1A protected against overloading and shortcircuits. Dim: 3 DIN modules.



2221S

Line driver 6 DIN modules. Directly connected to the mains, it allows power to Duo System riser.



2223C

Video amplifier for Duo System colour installations.



2273

Digital exchanger for Duo System.

2302

Twisted pair wire for Duo System with single section 1 sq. mm., 100 m coil.



2281

Actuator for Duo System, used to activate auxiliary services, such as additional door lock, lights, and chimes.



DV2420

Line distributor for Duo System.

DV2421P

Video distributor for Duo System. It allows very wide installations. It is used to withdraw the signal from the riser.

PRS210

15VA transformer. 127-230V. 13 Vac. VDE certification. 3 DIN modules in DIN bar, or it can be mounted on the wall. Can be used to power art. 2223, 2223C and 2281.



2230

Appartment separator in home automation installations with Duo System with myLogic.

DV2424P

Video distributor 4 output for Duo System. It is very flexible and it allows very wide installations. It is used to withdraw the signal from the riser.



2221ML

Appartment power supply for myLogic in multi-way installations. It powers all devices with a proper audio, video and data impedance.

DV2422A

Active video line distributor, 2 outputs, specific for myLogic monitor, it also can be connected to all the other Duo System devices.



DM2444

Concentrator module that allows to selectively centralize more door stations and more risers.

2287

Selector for 4 or 7 exchanges for Duo System. It allows the selection of maximum 4 or 7 surveillance cameras and/or other services activation.





VIDEO KITS

These are very much demanded and widely appreciated videokit, complete with all the components for easy installation of a myLogic home automation system for one or two way Duo System. The packaging is particularly good looking and they also contain the user manual for the end user very important for correct home automation functions management.

MYLOGIC-AGORÀ LIGHT SERIES



ML2262AGLC
One-way colour videokit with home-automation myLogic monitor and Agorà Light door station.

MYLOGIC-AGORÀ SERIES



ML2262AGC
One-way colour videokit with home-automation myLogic monitor and Agorà door station.

MYLOGIC-PROFILO SERIES



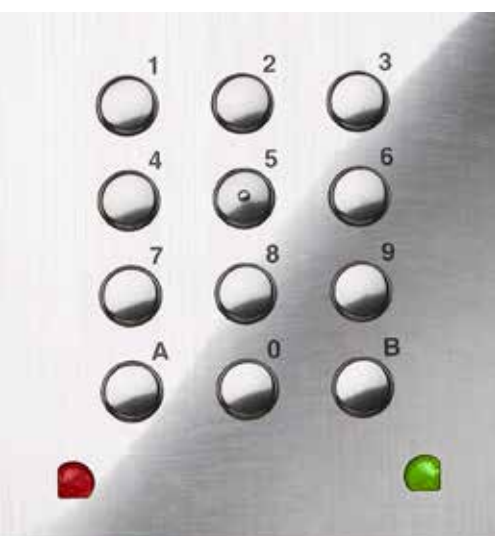
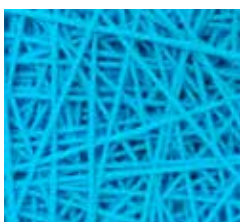
ML2262PLC
One-way colour videokit with home-automation myLogic monitor and Profilo door station.



VIDEO KIT COMPOSITION

	VIDEO KIT	INTERNAL STATION	DOOR STATION	POWER SUPPLY
👤 👁️ 🟠 🟡 🟢 One-way colour	ML2262AGLC	MYLOGIC ML2262C+ML2083	AGORÀ LIGHT VD2121CAGL	2220S+2221S
	ML2262AGC	MYLOGIC ML2262C+ML2083	AGORÀ VD2121CAG	2220S+2221S
	ML2262PLC	MYLOGIC ML2262C+ML2083	PROFILO VD2120CPL+CD2131PL+PL72	2220S+2221S





86 PROXIMITY READERS

86 AUDIO KIT

87 KEYPADS

ACCESS CONTROL

The selection of Access Control includes a complete line of access control proximity readers and keypads that Standing Alone or together with Video intercom systems offer various security solutions.

Aci Farfisa also offers products for stand-alone use with look of the most flexible external station ranges of the catalogue. We refer to Profilo and Mody for proximity readers, and the available ranges for keypads are Profilo, Matrix Style and Mody or other items not related to an existing range of push button panels that vary in features and specifications.

The **1PEXFD** kit represents a new and practical solution; it is an audio kit consisting of the external station with access control module and intercom.



PROXIMITY READERS

The selection of proximity readers is up-to-date and adapts harmoniously to the more versatile ranges of modular external stations in the catalogue: *Profilo* and *Mody*.

The system allows the opening of doors or gates to be activated so as to allow **exclusive access to the card holder** or the transponder once the element is simply approached to the reader. Among the range for access control, this choice is particularly suitable for communities or large residential complexes.



FP52

Dim: mm 124x90x18

Stand Alone Proximity Reader to be inserted in the *Mody* door station composition, in anodised aluminium. Ideal for access control situations, it uses all the accessories of *Mody* push button panels for surface or flush mounting, it is possible to combine it in Videointercom in Videointercom installations. It is provided with two mono stable relays which timing is adjustable according to the features of the connected device. The programming is made through master card managed by a display and a LED on the front of the reader that indicates also the operation status and data insertion of the enabled cards. Thanks to the 500 unit memory capacity, it is particularly indicated for the management of the access in big buildings or communities. It is provided with 4 cards + 1 Master Card.



FP11/10

Set containing 10 cards in white plastic for FP52 and FP52PL proximity reader. ISO standard format.

FP12/10

Set composed by 10 transponder units for activation of FP52 and FP52PL. Together with the actual transponder, which is circular shaped joint to a useful metal key-holder with closing. Material is plastic in blue and white colour.

TRANSFORMER

PRS210

15VA transformer. 127-230V. 13 Vac. VDE certification. 3 A modules on DIN bar. Ideal to power with alternate current Farcode Proximity Readers and Access Control Keypads elements.



FP52PL

Dim: mm 99x110x17

Aluminium stand alone proximity reader into a *Profilo* door station model. Designed for access control, it exploits *Profilo* accessories for flush or surface mounting, so even compositions for videointercom system are possible. Supplied with two relays with programmable timer according to the features of the connected device. The programming is made through a master card managed by a display and front LED's that indicate also data insertion of the enabled cards. Memory capacity is 500 cards, therefore ideal use is access control of complex buildings or communities. It is provided with 4 cards + 1 master card. Power supply 12 Vac/Vdc.



AUDIO KIT

1PEXFD

Complete one way **audio kit** that consists of *Exhito* EX321 intercom + external station with modules PL11PED and FC52PL **access control keypad** with PL92 for **surface mounting** + PRS210ED power supply. **Reduced wiring.**





KEYPADS

There is a wide range of devices for access control, with different models that respond to different needs, starting from the basic product up to keypads that, while always stand alone in function, guarantee greater security once combined with a Video intercom system by using the modules with Profilo, Matrix Style or Mody lines.



FC52PL

Dim: mm 99x110x17

Stand alone keypad with **aluminium front plate** and **stainless steel buttons**, that can be installed singularly or in composition with **Profilo** door stations for surface or flush mounting. Keypad for programming and setting relay enable codes of the two relays for door opening or access control etc. Keypad deactivation with increasing time intervals (max 25 sec), and, in case of wrong combination, deactivation is automatic. **12 programmable codes** from 1 to 8 digits for each relay, programmable timer from 1 to 99 sec. or bistable working of relays. Two LED's and sound signals indicate correct or wrong combination and programming. Relay can be activated by pressing additional button. Power supply 12 Vac/Vdc. Flush mounted version.



FC52MAS

Dim: mm 115x115x57

Anti-vandal stand alone keypad (IP45, with **stainless steel** front plate and buttons) that can be installed singularly or combining it with conventional or digital audio or video **Matrix Style** composition. It works with 2 relays for lock opening, access control etc. with **12 programmable codes** from 1 to 8 digits for each relay. Possibility to activate relays with additional buttons (exit button). Programmable timer from 1 to 99 seconds in monostable working, or bistable operation. Flush mounting with Matrix or Matrix Style accessories (for the installation elements, see Door Stations on previous chapters). Power Supply: 12 Vac/Vdc.



FC52P

Dim: mm 124x90x18

Access Control keypad with **aluminium front plate** and buttons in stainless steel **Mody** series. 2 relays for lock opening, access control, etc. Keypad for programming and setting relay enable codes. Keypad deactivation with increasing time intervals (max 25 sec.) in case of wrong combination. **4 programmable codes** from 2 to 6 digits for each relay. Possibility to activate relay 2 with a single button. Programmable timer from 1 to 99 seconds or bistable operation of relay 1. 2 LED's and sound signals indicating correct or incorrect combination and programming. Relay 1 can be activated by pressing an additional Exit button. Power supply 12 Vac/Vdc.



FC32P

Dim: mm 85x110x54

Access Control keypad with aluminium front plate and buttons in **stainless steel**. 2 relays for lock opening, access control, etc. Keypad for programming and setting relay enable codes. Keypad deactivation with increasing time intervals (max 25 sec.) in case of wrong combination. **4 programmable codes** from 2 to 6 digits for each relay. Possibility to activate relay 2 with a single button. Programmable timer from 1 to 99 seconds or bistable operation of relay 1. 2 LED's and sound signals indicating correct or incorrect combination and programming. Relay 1 can be activated by pressing an additional Exit button. Power supply 12 Vac/Vdc. **Wall back boxed version.**



FC42

Dim: mm 80x125x33

Access Control keypad IP45 surface mounted with **stainless steel** front plate and buttons. 2 relays for lock opening, access control, etc. Keypad for programming and setting relay enable codes. Keypad deactivation with increasing time intervals (max 25 sec.) in case of wrong combination. **12 programmable codes** up to 8 digits for each relay. Programmable timer from 1 to 99 seconds or bistable operation of relay 1. 2 LED's and sound signals indicating correct or incorrect combination and programming. Relays can be activated by pressing an additional Exit buttons. Power supply 12 Vac/Vdc. **Wall surfaced mounted version.**



FC21E

Dim: mm 77x106x42

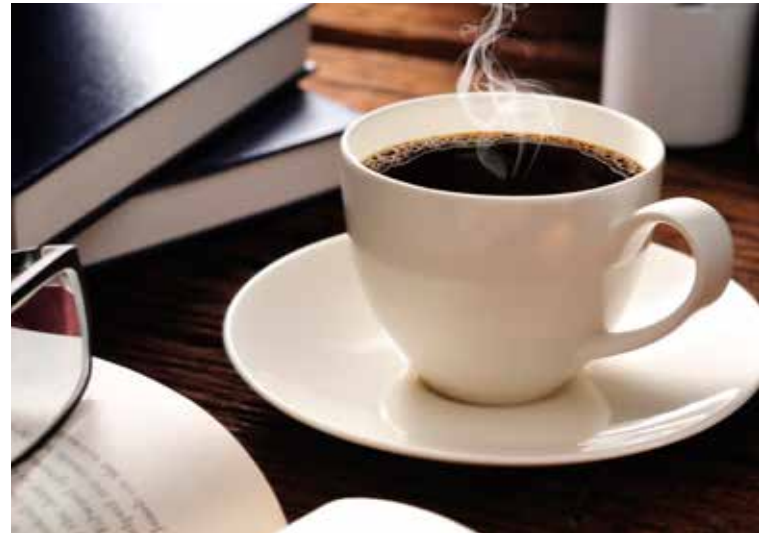
Access control keypad with front plate, buttons and box in **plastic**. One lock-opening relay, access control, etc. Keypad for programming and setting relay enabling codes. Keypad deactivation with increasing time intervals (max 25 sec.) in case of wrong combination. **8 programmable codes** from 2 to 6 digits. Programmable timer from 1 to 99 seconds or bistable operation. 2 LED's indicating correct or incorrect combination and programming. Power supply 12 Vac/Vdc. **Wall mounted and without back box.**

TRANSFORMER

PRS210

15VA transformer. 127-230V. 13 Vac. VDE certification. 3 A modules on DIN bar. Ideal to power with alternate current Farcode Proximity Readers and Access Control Keypads elements.







- 90 DOOR STATION GSM MYCOM
- 92 ELECTRONIC PABX's
- 92 INTERCOM - TELEPHONE INTERFACE
- 92 PROTECTION DEVICES

TELEPHONY

The telecommunication applications in residential are organised by Aci Farfisa by several solutions.

One of the news is **myCom** system using Profilo door stations where calls to the tenants happen directly exploiting the GSM technology to fixed or mobile telephones, therefore with no conventional audio systems and related cabling, the communication and the access control are guaranteed by a remarkable installation simplicity.

Within the telephone communications range solutions, telephone PABX's are available, with extra and further accessories. These complete the offer.



myCOM

DOOR STATION GSM MYCOM

The door station "myCom" uses GSM technology; therefore few elements and just a power supply are requested: this allows to have a complete a reliable communication system.

The call is made by the Profilo door station by a conventional button module or by digital keyboard and it's transmitted to a fixed or mobile telephone number properly programmed in a planned sequence. Several external stations are allowed and multiple lock openings are separately managed, for instance door and gate.

Therefore it's a substantial alternative for an audio installation even pretty large (without limits of distance amongst outside station and inside received) with no wiring at all.

Technical features

- Programming by USB, SMS (texting) or directly on SIM card
- Powering 12 Vdc\ac
- A SIM card is required
- Pre paid SIM card can be managed

Functions

- Land phone number or mobile phone number (3 numbers in cascade in case of no answer)
- CLIP function available. It allows caller identification for lock releasing
- 2 electric lock releases are permitted
- The max number of users is 50
- Alarm activation managing

GSM AUDIO CALL MODULES



PL10G

Dim: mm 99x110x17

Audio module with integrated door speaker, with **no button** for myCom system.



PL11G

Dim: mm 99x110x17

Audio module with integrated door speaker, **1 call button** for myCom system.



PL12G

Dim: mm 99x110x17

Audio module with integrated door speaker, **2 call buttons** for myCom system.



PL124G

Dim: mm 99x110x17

Audio module with integrated door speaker, **4 call buttons** on two rows for myCom system.



PRS210

15VA transformer. 127-230V. 13 Vac. VDE certification. 3 A modules on DIN bar. Ideal to power with alternate current Farcode Proximity Readers and Access Control Keypads elements.

AN01

Antenna to be used any time the signal is not appropriated. It's supplied with coaxial cable and connector, a bracket is not supplied.

MYCOM DIGITAL DOOR STATIONS



TD10PLG

Dim: mm 99x110x17

Digital door station for myCom, with aluminium front plate and 14 steel buttons. Equipped with LCD graphic display. It allows the call from the user by **dialling the corresponding number** and electric lock release by entering the private code. The **electronic index** is also integrated, which gives the possibility to scroll the names in alphabetical order and select the desired one. It can store up to 200 user names. It must be connected to PL10G, PL11G, PL12G or PL124G.



FC52PL

Dim: mm 99x110x17

Stand alone keypad with **aluminium front plate** and **stainless steel buttons**, that can be installed singularly or in composition with **Profilo** door stations for surface or flush mounting. Keypad for programming and setting relay enable codes of the two relays for door opening or access control etc. Keypad deactivation with increasing time intervals (max 25 sec), and, in case of wrong combination, deactivation is automatic. **12 programmable codes** from 1 to 8 digits for each relay, programmable timer from 1 to 99 sec. or bistable working of relays. Two LED's and sound signals indicate correct or wrong combination and programming. Relay can be activated by pressing additional button. Power supply 12 Vac/Vdc. Flush mounted version.



FP52PL

Dim: mm 99x110x17

Aluminium stand alone proximity reader into a **Profilo** door station model. Designed for access control, it exploits Profilo accessories for flush or surface mounting, so even compositions for videointercom system are possible. Supplied with two relays with programmable timer according to the features of the connected device. The programming is made through a master card managed by a display and front LED's that indicate also data insertion of the enabled cards. Memory capacity is 500 cards, therefore ideal use is access control of complex buildings or communities. It is provided with 4 cards + 1 master card. Power supply 12 Vac/Vdc.



KIT 1MFCPL

Composed by door station PL11G, transformer PRS210, FC52PL keypad and rain shelter PL92.

KIT 1MCPL

Composed by door station PL11G, transformer PRS210 and back box PL71.

Additional modules



PL24S

Dim: mm 99x110x17

Additional module with integrated decoder for external stations with **4 buttons**.



PL228S

Dim: mm 99x110x17

Additional module with integrated decoder for external stations with **8 buttons on 2 rows**.



PL50

Dim: mm 99x110x17

Street number module.



PL20

Dim: mm 99x110x17

Blank module.



PROFILO INSTALLATION ELEMENTS

PL71

Dim: mm 91x133x47

Back box for 1 module.

PL72

Dim: mm 91x244.5x47

Back box for 2 modules.

PL73

Dim: mm 91x356x47

Back box for 3 modules.

PL81

Dim: mm 118x153x41

Hood cover for 1 module.

PL82

Dim: mm 118x264x41

Hood cover for 2 modules.

PL83

Dim: mm 118x376x41

Hood cover for 3 modules.

PL84

Dim: mm 217x264x41

Hood cover for 4 modules on 2 vertical rows.

PL86

Dim: mm 217x376x41

Hood cover for 6 modules on 2 vertical rows.

PL89

Dim: mm 316x376x41

Hood cover for 9 modules on 3 vertical rows.

PL91

Dim: mm 118x154x80

Surface mounting rain shelter for 1 module.

PL92

Dim: mm 118x265x80

Surface mounting rain shelter for 2 modules.

PL93

Dim: mm 118x377x80

Surface mounting rain shelter for 3 modules.

PL94

Dim: mm 217x264x80

Surface mounting rain shelter for 4 modules on 2 vertical rows.

PL96

Dim: mm 217x376x80

Surface mounting rain shelter for 6 modules on 2 vertical rows.

PL99

Dim: mm 316x376x80

Surface mounting rain shelter for 9 modules on 3 vertical rows.





ELECTRONIC PABX's

The Fartel PABX's represent the heart of Aci Farfisa integrated communication. They increase the uses and capabilities of the telephone: the ideal answer to the ever-increasing communication needs of the home and the office. The range includes PABX and additional boards.

The PABX's of the connected terminals: programming the telephones in different telephone features and intercom services (e.g.: only certain local areas, only some telecommunication operators), setting distinctive ringing, associating a direct internal number with each telephone set (DISA function), defining a terminal as "fax", follow me, call capture, 3-party conference. 2 different general modes can be programmed (e.g.: day and night). Programming is carried out from a master telephone via a security code. Other features of the PABX: electrical power failure running (each external line is guaranteed a direct connection with an internal station and a permanent memory keeps the programming data), room monitor (continuous listening from one room to another), amplified speaker output for paging application, activation of electrical equipment from remote telephone.

	FT105P	FT208P
Power supply	230V	230V
Maximum power consumption	16W	18W
Power consumption in stand-by	10W	10W
Temperature and humidity	0°÷40° C - 85%RH	0°÷40° C - 85%RH
Dimensions	226 x 254 x 66	226 x 254 x 66
Weight	1,3 kg	1,4 kg
No. of external lines	1	2
No. of internal lines	5	8
Italian approval	1998BXSP191	1998BXSP032

ELECTRONIC PABX's



FT105P

Telephone PABX with **1 trunk line** and **5 internal lines**.

FT208P

Telephone PABX with **2 external lines/8 internal lines**, respectively. The intercom double call, together with the possibility to divide the external lines on to 2 different bands of internal stations, make the FT208 mode the ideal solution for two-way or home/office applications in which the PABX is shared.

ADDITIONAL BOARDS

ES60

Intercom interface with double call and 2 relays for door-opener.

ES65

Same as ES60, with 2 additional relays for the activation of electrical equipment, also from remote telephone.

ES70

Board which allows to **identify the calling number** providing that this service is required to the local telephone provider.

INTERCOM - TELEPHONE INTERFACE



FT11D

An intercom-telephone interface that allows a normal telephone to be connected to the telephone trunk line and the home intercom system.

FT11D does not require any programming and telephone communication is direct. Intercom communication can take place after an external call has been received or by pressing the R key or Flash twice.

Operation: during conversation, a background sound signal indicates the arrival of an intercom or telephone call to the user. The telephone conversation under way can be put on hold, with background music, in order to answer the intercom call. The intercom interface has a terminal board with the same numbering as a Aci Farfisa intercom and can form part of a 4+1 intercom or traditional video intercom system.

Power supply: 127/230V.

Maximum power consumption: 7W.

DIN housing: DIN, 8 A modules.

PROTECTION DEVICES

PR1

Protection device for **1 telephone line** on DIN 2.5 module bar.

PR2

Protection device for **2 telephone lines** on DIN 2.5 module bar.

PRAL

Protection device for **power supply line** on DIN 2.5 module bar.

ITEMS INDEX

Art.	Page
1AEXD	55
1CK	67
1CKD	55
1CKS	67
1CKSD	55
1MPW	75
1PEXD	55
1PEXFD	55, 86
1PTMW	75
1V/12V	75
2CK	67
2CKD	55
2CKS	67
2CKSD	55
2MPW	75
2PEXD	55
2PTMW	75
241D	52
241DMA	50, 51
476	35, 65
724N	70
1181E	53
1273TV	65
1281	35, 53, 65
1281E	65
1282E	65
1304	65
1443E	65
1443ED	53
1471	35, 41, 53, 65, 75
1471E	53, 65
1472	35, 41, 53, 65, 75
1473	53, 65, 75
2220S	23, 82
2221ML	23, 82
2221S	23, 82
2223	23
2223C	23, 82
2230	23, 82
2273	23, 82
2281	23, 82
2287	23, 82
2302	23, 82
4230	35
4235TVP	35
4236	35
4273P	35
6273	41
9083	18, 30, 46, 58
A	
AD2110MAS	22
AD2120CPL	20
AD2121CAG	20
AD2121CAGL	19
AG20	20, 49
AG21	20, 49
AG30ED	49
AG40CED	49
AG100A	49
AG100T	49
AG100TS	20
AG100V	49
AGL20	19, 48

Art.	Page
AGL21	19, 48
AGL100A	48
AGL100T	48
AGL100TS	19
AGL100V	48
AN01	90
C	
CD2131MAS	22
CD2131PL	21
CD2132MAS	22
CD2132PL	21
CD2134MAS	22
CD2134PL	21
CD2138PL	21
CD4130MAS	34
CD4134PL	33
CD4138PL	33
CD6134PL	40
CD6138PL	40
CV01	35, 65
CV02	65
CV03	35, 65
D	
DM2444	23, 82
DV2	35, 65
DV2D	35, 41, 53, 65
DV4	35, 65
DV4D	35, 41, 53, 65
DV2420	23, 82
DV2421P	23, 82
DV2422A	23, 82
DV2424P	23, 82
E	
EH9100CW	58
EH9160CT	58
EH9160CW	58
EH9160CWDG	30
EH9160PLCT	66
EH9160PLCW	66
EH9161AGCT	54
EH9161AGCW	54
EH9161AGLCT	54
EH9161AGLCW	54
EH9161CT	46
EH9161CW	46
EH9161PLCT	54
EH9161PLCT/2	54
EH9161PLCW	54
EH9161PLCW/2	54
EH9262AGCT	25
EH9262AGCW	25
EH9262CT	18
EH9262CW	18
EH9262PLCT	25
EH9262PLCT/2	25
EH9262PLCW	25
EH9262PLCW/2	25
ES60	92
ES65	92
ES70	92
EX301	47, 59
EX304	47, 59
EX310	59

Art.	Page
EX311	47
EX312	38
EX320	59
EX320DG	31
EX321	47
EX322	38
EX332	47, 59
EX352	18
EX362	18
EX3100C	31, 38, 47, 59
EX3111AGC	54
EX3111AGLC	54
EX3111PLC	54
EX3111PLC/2	54
EX3160	31, 38, 47, 59
EX3160C	31, 38, 47, 59
EX3160PL	66
EX3160PLC	66
EX3161AG	54
EX3161AGC	54
EX3161AGLC	54
EX3161AGL	54
EX3161PL	54
EX3161PL/2	54
EX3161PLC	54
EX3161PLC/2	54
EX3262	18
EX3262AG	25
EX3262AGC	25
EX3262C	18
EX3262PL	25
EX3262PL/2	25
EX3262PLC	25
EX3262PLC/2	25
F	
FC21E	87
FC32P	87
FC42	87
FC52MAS	87
FC52P	87
FC52PL	87, 91
FP11/10	86
FP12/10	86
FP52	86
FP52PL	86, 91
FT11D	92
FT105P	92
FT208P	92
G	
GN30	65, 75
K	
KIT 1MFCFPL	91
KIT 1MCPL	91
KM810WDG	31
M	
MA71	22, 34, 51, 63, 73
MA72	22, 34, 51, 63, 73
MA73	22, 34, 51, 63, 73
MA91	22, 34, 51, 63, 73
MA92	22, 34, 51, 63, 73
MA93	22, 34, 51, 63, 73
MAS10P	34, 62, 72
MAS11P	34, 62, 72

Art.	Page
MAS11PED	41, 51
MAS12P	34, 62, 72
MAS20	51
MAS22	51, 62, 72
MAS24	51, 62, 72
MAS24S	22, 34
MAS42CDG	34
MAS43CDG	34
MAS43CED	41, 51
MAS61	22, 34, 51, 63, 73
MAS62	22, 34, 51, 63, 73
MAS63	22, 34, 51, 63, 73
MC2000T	17, 80
MC2000W	17, 80
MC3000B	18, 31, 38, 47, 59
MC3000G	18, 31, 38, 47, 59
MC3000T	18, 31, 38, 47, 59
MD10	63, 73
MD10ED	52
MD11	63, 73
MD11ED	52
MD12	63, 73
MD12ED	52
MD20	52
MD21	52, 64, 74
MD22	52, 64, 74
MD23	52, 64, 74
MD24	52, 64, 74
MD30	63, 73
MD41D	52
MD50	52
MD71	53, 64, 74
MD72	53, 64, 74
MD73	53, 64, 74
MD74	53, 64, 74
MD81	53, 64, 74
MD82	53, 64, 74
MD83	53, 64, 74
MD84	53, 64, 74
MD86	53, 64, 74
MD91	53, 64, 74
MD92	53, 64, 74
MD93	53, 64, 74
MD94	53, 64, 74
MD96	53, 64, 74
MD100	63, 73
MD122	63, 73
MD124	63, 73
MD200	63, 73
MD222	52, 64, 74
MD224	52, 64, 74
MD226	52, 64, 74
MD228	52, 64, 74
MD804	53, 64, 74
ML2002AGC	24
ML2002AGLC	24
ML2002C	17
ML2002PLC	24
ML2062AGC	24
ML2062AGLC	24
ML2062C	17
ML2062PLC	24
ML2083	17, 80

Art.	Page
ML2262AGC	24, 83
ML2262AGLC	24, 83
ML2262C	17, 80
ML2262PLC	24, 83
P	
PDX2000	23, 82
PDX4000	35
PL10G	90
PL10P	32, 61, 71
PL10PED	39, 49
PL11G	90
PL11P	32, 61, 71
PL11PED	39, 49
PL12G	90
PL12P	32, 61, 71
PL12PED	39, 49
PL20	33, 40, 50, 61, 71, 91
PL21	50, 61, 71
PL22	50, 61, 71
PL23	50, 61, 71
PL24	50, 61, 71
PL24S	21, 33, 40, 91
PL40P	61
PL40PC	60
PL40PCDG	32
PL40PCED	39, 49
PL40PED	39, 49
PL41P	61
PL41PC	60
PL41PCED	39, 49
PL41PED	39, 49
PL42P	61
PL42PC	60
PL42PCDG	32
PL42PCED	39, 49
PL50	33, 40, 50, 61, 71, 91
PL71	21, 33, 40, 50, 62, 72, 91
PL72	21, 33, 40, 50, 62, 72, 91
PL73	21, 33, 40, 50, 62, 72, 91
PL81	21, 33, 40, 50, 62, 72, 91
PL82	21, 33, 40, 50, 62, 72, 91
PL83	21, 33, 40, 50, 62, 72, 91
PL84	21, 33, 40, 50, 62, 72, 91
PL86	21, 33, 40, 50, 62, 72, 91
PL89	21, 33, 40, 50, 62, 72, 91
PL91	21, 33, 40, 50, 62, 72, 91
PL92	21, 33, 40, 50, 62, 72, 91
PL93	21, 33, 40, 50, 62, 72, 91
PL94	21, 33, 40, 50, 62, 72, 91
PL96	21, 33, 40, 50, 62, 72, 91
PL99	21, 33, 40, 50, 62, 72, 91
PL122P	61, 71
PL124G	90
PL124P	61, 71
PL226	50, 61, 71
PL228	50, 61, 71
PL228S	21, 33, 40, 91
PL422P	61
PL422PC	60
PL424P	61
PL424PC	60
PR1	92
PR2	92

Art.	Page
PRAL	92
PRS210	23, 35, 41, 53, 65, 75, 82, 86, 87, 90
PRS210ED	53
PRS220	75
PRS226	75
PRS226E	65
PRS231	75
PRS235	75
PRS240	65
PRS4220	35
PRS6220	41
PT501	70
PT502	70
PT510W	70
PT515	70
PT520W	70
PT524W	70
R	
RL36	53, 65, 75
RL37	65
RL37D	53
S	
SM50	70
SR40	75
SR41	65, 75
ST7100CW	23, 82
T	
TA320	18, 31, 38, 47, 59, 70
TA2160	17, 80
TA3160	18, 31, 38, 47, 59
TA7100W	23, 82
TA9160	18, 30, 46, 58
TD10PLG	91
TD2100MAS	22
TD2100PL	20
TD4100MAS	34
TD4100PL	32
TD6100MAS	41
TD6100PL	40
V	
VD2120CMAS	22
VD2120CPL	20
VD2121CAG	20
VD2121CAGL	19
W	
WA01AG	19, 20, 49
WA2160T	17, 80
WA2160W	17, 80
WA9100T	18, 46, 58
WA9100W	18, 30, 46, 58
WB3160	59
WB3160DG	31
WB3161	47
WB3162	38
WB3262	18
WB7260	23, 82
Z	
ZH1083	16
ZH1084W	16
ZH1084B	16
ZH1262W	16
ZH1262B	16

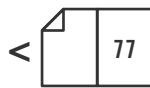
Aci Farfisa on line

Go to the site www.acifarfisa.it designed with the most advanced computer technologies for detailed information on all Aci Farfisa products and on all the types of systems with the system manuals.

Discover also www.mylogic.it, the site completely reserved for the home automation.



www.acifarfisa.it



Further info about myLogic in HOME AUTOMATION chapter

www.mylogic.it



Aci Farfisa social network

Aci Farfisa goes social! Discover Aci Farfisa's social world on the major social networks: Facebook, Youtube and Flickr.



Aci Farfisa multimedia

Request a copy of the CD containing the whole Aci Farfisa Video intercom catalogue in Italian, English, French, Spanish, Portuguese and German and a copy of the CD containing all complete and updated technical manuals.



Diagrams in this catalogue are a simple reference. For detailed installation schematics, please see the specific technical manual.

Due to the continuous technological evolution, Aci Farfisa reserves the right to change the specifications of any item and range composition without prior notice.

As for CCTV sector, please refer to the specific Catalogue.

Cod: GB 05/13

design:
capolinea.it

print:
Bieffe
www.bieffesrl.com

photos:
Paolo Zitti
www.paolozitti.it
Maurizio Paradisi
www.maurizioparadisi.it

Copyright © 2013:

ACI srl
Via E. Vanoni, 3
60027 Osimo AN Italy
Tel. (+39) 071.7202038
Fax (+39) 071.7202037
info@acifarfisa.it
www.acifarfisa.it



www.acifarfisa.it