

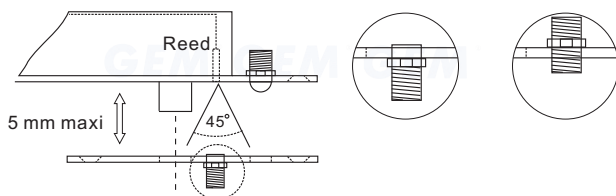
EB260 electric dropbolt incorporates a mechanical cylinder to lock or unlock the door manually in case of an unexpected power failure.

● Specification

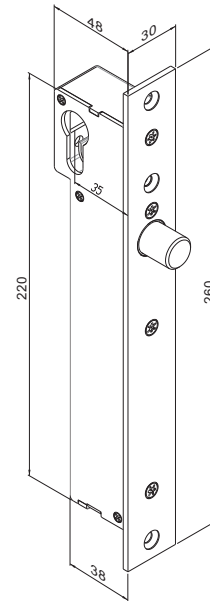
- Fail-Secure Version (Power to Unlock)
- Operating Voltage: 12~28 VDC
- Voltage Tolerance: $\pm 10\%$
- Current Draw: Pull in: 1.0A, Holding: 0.3A/12VDC (at 20°C)
- Operating Temperature: -10~+45°C
- Humidity: 0~95% non-condensing.
- Tested over 500000 cycles.
- Faceplate Material: Zinc alloy
- Auto-relocking Time Delay : 1.5, 3, 6, 9 seconds
- Net Weight: 1.3 Kg
- Locked and unlocked status output (EB260M)

● Adjustable Sensor

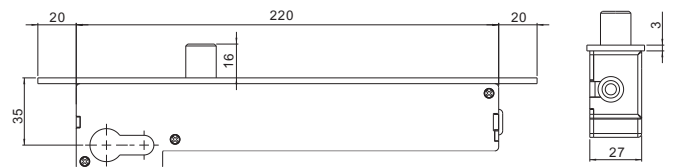
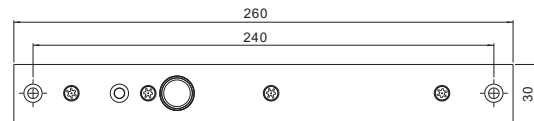
The door close sensor can detect within a range of 5 mm. If the door gap is too wide, a magnet within the strike plate can be adjusted to improve detection accuracy.



● Dimensions



Unit: mm



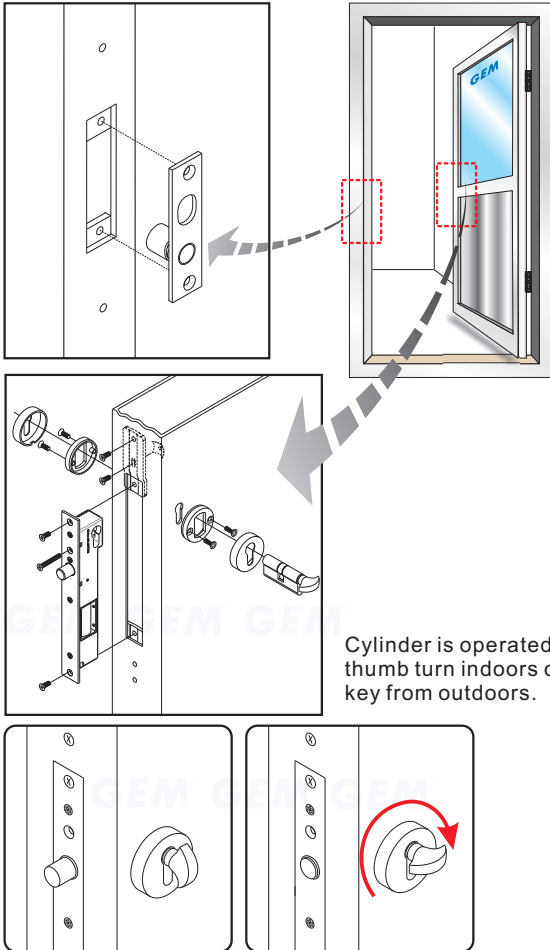
● Relock Time Delay

Door locking time delay lasts from 1.5 to 9 seconds adjustable by jumper PINs.



● Door Leaf Flush Installation

EB260 can be fitted to the side of the door.

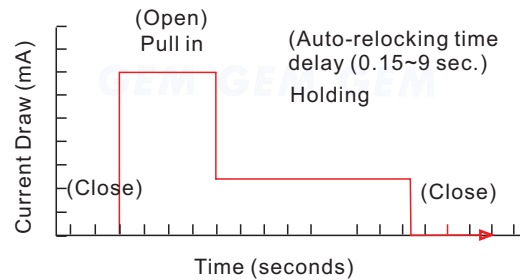


● Long Life Solenoids

The specially designed solenoid aims for strength and long life. The solenoid is guaranteed 500,000 times of operations.

● Energy Saving Design

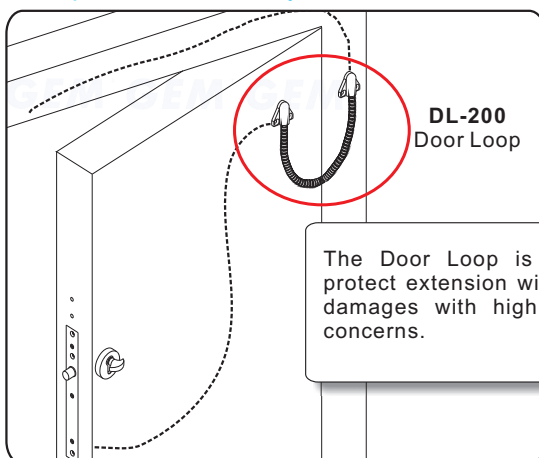
After the dropbolt is completely locked, the current draw changes from 1.0A to 0.3A to prolong its life.



● 12 to 28VDC self-regulating

The Electric Dropbolt operates on 12 to 28 VDC input voltage with self regulating feature.

● Optional Accessory



● Warranty

The product is warranted against defects in material and workmanship while used in normal service for a period of 2 years from the date of sale to the original customer. The GEM policy is one of continual development and improvement; therefore GEM reserves the right to change specifications without notice.

GIANNI INDUSTRIES, INC.