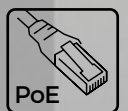




**SONY**  
Image sensor technology

**1080p**  
FULLHD



**Bluetooth**

**D31TDV**

## IP VIDEO DOOR STATION

For multi-tenant residences and buildings with up to 1000 units  
With 7" Touch Display Module

Designed,  
developed and  
made in Germany

# ANSWER YOUR DOOR ANYWHERE.

## HOW DOES IT WORK?

Imagine, you are not at home and your children have locked themselves out or the courier wants to deliver a parcel. With DoorBird this is no longer a problem. Every time someone rings the doorbell you will get a push notification on your smartphone or tablet. Via the DoorBird App you can talk to visitors and also see them live in HD quality. You will never miss a visitor again. With DoorBird you are on the move and yet at home, even if a burglar rings at the door to check if someone is at home.

## SMART HOME STARTS AT THE FRONT DOOR

DoorBird is the smart solution for your house entrance. Simply connect your DoorBird IP Video Door Station to your smartphone and talk to your visitor - anywhere you are. The IP Video Door Station can be used as a stand-alone unit or can be integrated into an existing Smart Home platform. Even existing classic installations such as an electric door opener can still be used and controlled via the DoorBird App.

## QUALITY MADE IN GERMANY

All DoorBird products are designed, developed and produced by Bird Home Automation Group in Berlin, Germany. We manufacture all products with the greatest care and precision, and deliver them to our customers all over the world.

More than 120 employees are committed to continuously developing DoorBird in order to guarantee the highest quality, longevity and customer satisfaction. For us "Made in Germany" is not only a seal of quality, but a philosophy.



### QR code reader

- Configurable via App
- Individual QR codes for access control

### HD HDTV video

- Ultra wide-angle, hemispheric lens, 180°

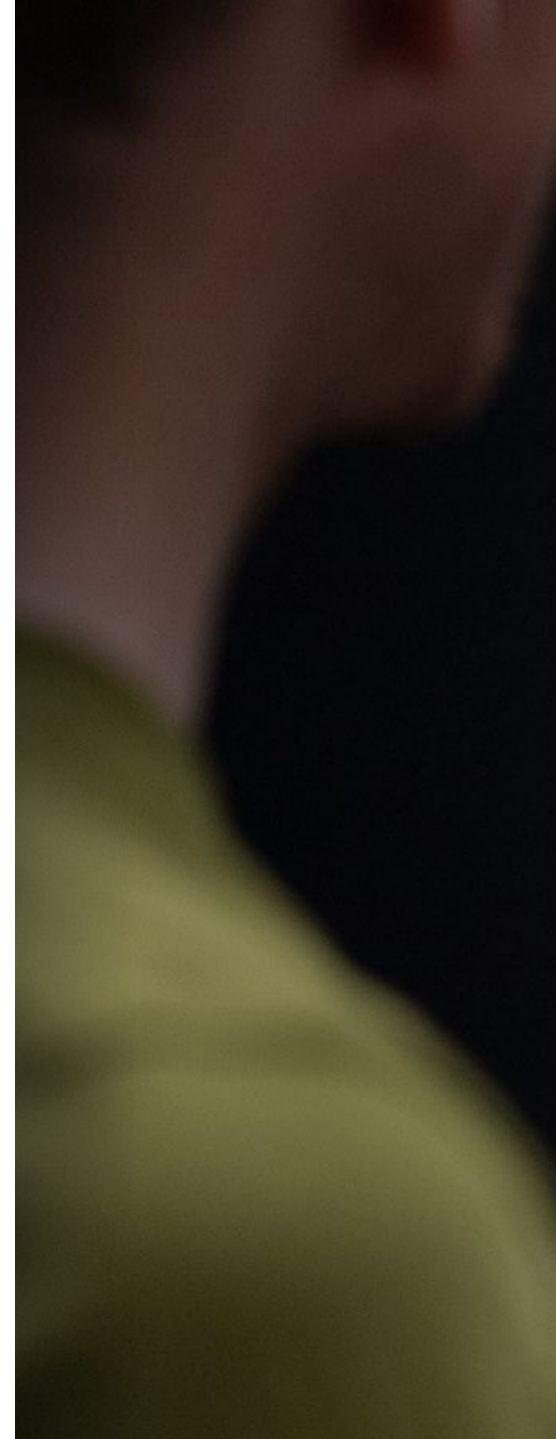
### IR Night vision

- With 12 Infrared LEDs





### Light sensor

- For night vision mode







-  **Integrated accessibility module**
- Status visualization
  - Acoustic signal when pressing the call button
  - Hearing loop for wireless transmission of the audio signal from the door station to the visitor's hearing aid
  - Complies with DIN 18040 (DE), ÖNORM B1600 (AT), SIA 500 (CH) and Article 4 (FR) for construction of accessible buildings

-  **Display module**
- 7" Ultra-bright touch display
  - Touch can also be operated in wet conditions
  - Easy to replace
  - Individually configurable, e.g. display of the resident directory with logos, welcome screen, tiles for shortcuts

- 4D Motion sensor with 4D technology**
- Distance up to 10 m adjustable via App (interval: 1 m)

-  **Bluetooth Low Energy (BLE)**
- For access control (compatible with Bluetooth Keyfob A8007), compatible external sensors and smart locks

-  **RFID reader**
- Configurable remotely via App (e.g. time frame)
  - 13.56 MHz

## IP VIDEO DOOR STATION D31TDV

The door station sets new standards in terms of modern design, functionality and usability. It has an ultra-bright 7" touch display that is easy to read even in direct sunlight and can be operated by visitors even in bad weather such as rain and snow.

The door station has innovative functions such as

- an integrated RFID and QR code reader
- a virtual keypad
- a 4D motion sensor
- full remote configurability via app, web browser
- a well-documented API interface
- as well as compatibility with more than 90 third-party solutions from the smart home, building automation and access control sectors.

The door station is supplied with network data and power via PoE+, so only one network cable needs to be laid to the installation location. Alternatively, the door station can also be connected to the network via two simple bell wires with the DoorBird 2-wire Ethernet PoE+ Converter.

The integrated Sony STARVIS™ image sensor with 1080p HDTV resolution and WDR offers brilliant image quality even in difficult ambient conditions during the day and at night.

Accessibility is ensured by the standard integrated accessibility module with pictograms, acoustic support with warning tones and a built-in hearing loop for transmitting the audio signal to hearing aids.



### Open API

- Local interface for integration with third-party systems and SIP



### Smart Home & NVR compatible

- Control4, Loxone, Crestron, Synology, AVM FRITZ!Fon, URC, QNAP, RTI, Nice, Fibaro, Bang & Olufsen and others



### Geofencing

- Automatic door and gate opening when returning home



### Smart Transmission Mode (STM)

- Real-time audio / video communication, optimized for mobile devices via WiFi, 3G, 4G, 5G



### Individual action schedules, e.g.:

- RFID card "abc" has only access on Wednesday from 9 am until 11 am



### Two freely configurable bistable switching relays

- Two doors or gates can be controlled via App
- Status configurable via App: temporary or permanent circuit



The door station not only relies on high-quality and durable materials. The entire design was also developed with sustainability criteria in mind. For example, the 7" touch display has been specially developed for the door station. It has a 6 mm thick, hardened protective glass to provide maximum protection against scratches and knocks. Should damage occur due to extreme influences, the display can be easily replaced on site at any time, even by a layperson, without the need for special tools. DoorBird is sustainable because single modules can be replaced..



**Video and audio call**

- On smartphones, tablets (iOS, Android), IP and landline phones (SIP)



**Automatic door buzzer**

- For use in medical offices and office environments



**Easy connection to the network**

- Connection via a network cable or bell wire via 2-Wire Ethernet PoE+ Converter DoorBird A1072 (PoE, network data)



**Noise reduction and echo cancellation (AEC, ANR)**



**Wiegand interface**

- Output of keypad and RFID reader



**Virtual keypad module**

- Configurable via App
- Individual PIN codes
- Individual events (e.g. trigger a relay, push notification, ...)

GENERAL	
Front panel	3 mm (0.12 in) For materials and colors see material board and <a href="http://www.doorbird.com">www.doorbird.com</a> .
Mounting type	Flush- or surface-mounted, mounting housing sold separately
Power supply	57 V DC (max. 15 W) or PoE+ (Power over Ethernet 802.3at)
Touch Display Module	7" LCD touch display illuminated, name directory (max. 1000 entries)
Accessibility module	<ul style="list-style-type: none"> <li>• Approval according to DIN 18040</li> <li>• Pictograms [calling, speaking, door opening] via Display</li> <li>• Door opening acoustics</li> <li>• Hearing loop</li> </ul>
Weight	2290 g
Connectors	<ul style="list-style-type: none"> <li>• RJ45 for LAN/PoE+</li> <li>• 2x Bistable latching relay #1, max. 24 V DC/AC, 1 A</li> <li>• External input (eg. door opener button)</li> <li>• Wiegand</li> <li>• 48 - 57 V DC 1A input (+, -)</li> <li>• Relays can be expanded / detached with DoorBird I/O Door Controller</li> <li>• 2x Call button port</li> <li>• 1x Module port (keypad, fingerprint)</li> <li>• 1x USB Type-C Module port (touch display)</li> </ul>
Protection Class	IP65
Approvals	CE, FCC, IC, RoHS, REACH, WEEE, IEC/EN 62368, IEC/EN 62471
Dimensions	412 x 176 x 48,75 mm (H x W x D) 16,22 x 6,93 x 1,92 in (H x W x D)
Operating conditions	-25 to +55°C / -13 to 131°F Humidity 10 to 85 % RH (non-condensing)
Scope of delivery	<ul style="list-style-type: none"> <li>1x Main Electrical Unit</li> <li>1x Touch Display Module 7"</li> <li>1x Front Panel</li> <li>1x RFID Key Fob</li> <li>1x Screwdriver</li> <li>1x Quickstart Guide with Digital Passport</li> <li>1x Installation Manual</li> <li>1x Small Parts</li> </ul>
Warranty	see <a href="http://www.doorbird.com/warranty">www.doorbird.com/warranty</a>

CURRENT SYSTEM REQUIREMENTS	
System requirements	<p>Mobile device: Newest iOS on iPhone/iPad, newest Android on Smartphone/Tablet</p> <p>Internet: High-Speed Landline Broadband Internet connection, DSL, cable or fiber optic, no socks or proxy server</p> <p>Network: Ethernet Network, with DHCP</p>
Recommended installation height	Camera lens should be at a min. height of 145 cm (57 in). Before the installation please determine your optimal installation height.

VIDEO	
Camera	HDTV 1080p, dynamic (VGA - HDTV)
Lens	High-end ultra wide-angle hemispheric lens 180° (D), 150° (H), 82° (V), straightened, IR-capable
Night vision	Yes, light sensor, automatic IR-cut filter, Infrared LEDs (850 nm)

AUDIO	
Audio components	Speaker and microphone, noise reduction and echo cancellation (ANR, AEC)
Audio streaming	Two-way, full duplex

NETWORK	
Ethernet	RJ45 jack, PoE+ IEEE 802.3at, 10/100 Base-T
Supported protocols	HTTP, HTTPS, SSL/TLS, Bonjour, DNS, RTSP, RTP, TCP, UDP, RTCP, ICMP, DHCP, ARP, SIP, DTMF (RTP [RFC-2833], SIP INFO [RFC-2976]), STM

MOTION SENSOR	
Type	Active
Detection angle	80° (H), 50° (V)
Range	1 - 6 m (3.3 - 19.7 ft), depends on environment, configurable in 1 m (3.3 ft) steps.
Technology	4D, based on multiple integrated sensors and algorithms, e.g. Radio Frequency Energy (RFE) Via App, e.g. <ul style="list-style-type: none"> <li>• Range (1 - 6 m / 3.3 - 19.7 ft)</li> <li>• Movement direction (coming, leaving, both)</li> <li>• Individual events (e.g. switch a relay, push notification, SIP call [audio/video], HTTP(s) requests)</li> <li>• Individual schedules</li> </ul>
Configuration	

RFID READER 13.56 MHZ	
Type	Active Reader Passive Tag (ARPT) system
Standard	ISO 14443A, MIFARE® Classic®, MIFARE® DESFire® EV1, MIFARE® DESFire® EV2, NFC
Frequency	13.6 MHz
Range	0 - 3 cm, depends on environment
Antenna	Internal
Compatible Transponder	RFID key fobs, sold separately, see <a href="http://www.doorbird.com/buy">www.doorbird.com/buy</a>
Configuration	<ul style="list-style-type: none"> <li>Up to 1000 tags manageable</li> <li>Via App, e.g. <ul style="list-style-type: none"> <li>• Tag (add, delete)</li> <li>• Individual events (e.g. switch a relay, SIP call [audio/video], HTTP(s) notification)</li> <li>• Individual schedules</li> <li>• RFID history available for 60 minutes in the app</li> </ul> </li> </ul>

WIEGAND	
Protocols	26, 30, 31, 34 and 44 bit
Direction	Output (Keypad, RFID reader)
Maximum cable length	150 m (492 ft)
Highlights	Galvanic isolation of the Wiegand output signals, max 5 mA per output (data line)
Configuration	Via App, e.g. protocol and interface on/off

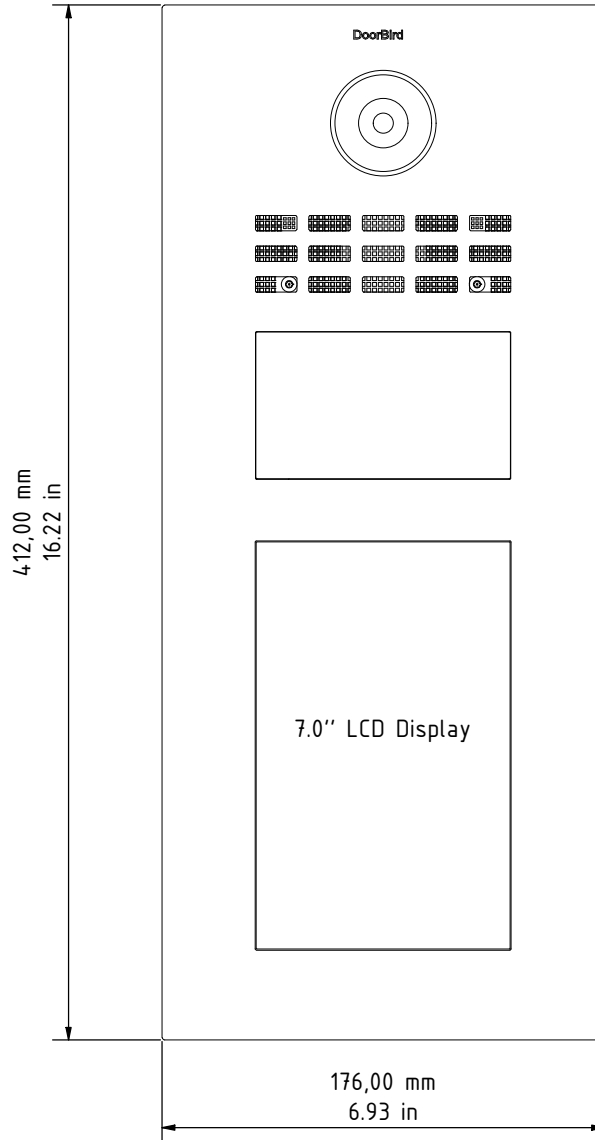
INTEGRATED WIRELESS MODULES	
Bluetooth	Bluetooth Low Energy (BLE), compatible with DoorBird Bluetooth Keyfob Remote A8007
RFID	13.56 MHz
Sensor	24 GHz, can be disabled

THIRD-PARTY INTEGRATION (DOORBIRD CONNECT)	
Partner integrations	see <a href="http://www.doorbird.com/connect">www.doorbird.com/connect</a>
API	see <a href="http://www.doorbird.com/api">www.doorbird.com/api</a>
Simultaneous video streams	One, for event-based recording

OPTIONAL ACCESSORIES	
Sold separately	see <a href="http://www.doorbird.com/buy">www.doorbird.com/buy</a>

Special remarks:  
Assembly requires professional skills or a technician.

Front panel material thickness: 3,0 mm (0.12 in)





GERMAN  
DESIGN  
AWARD  
WINNER  
2025

