

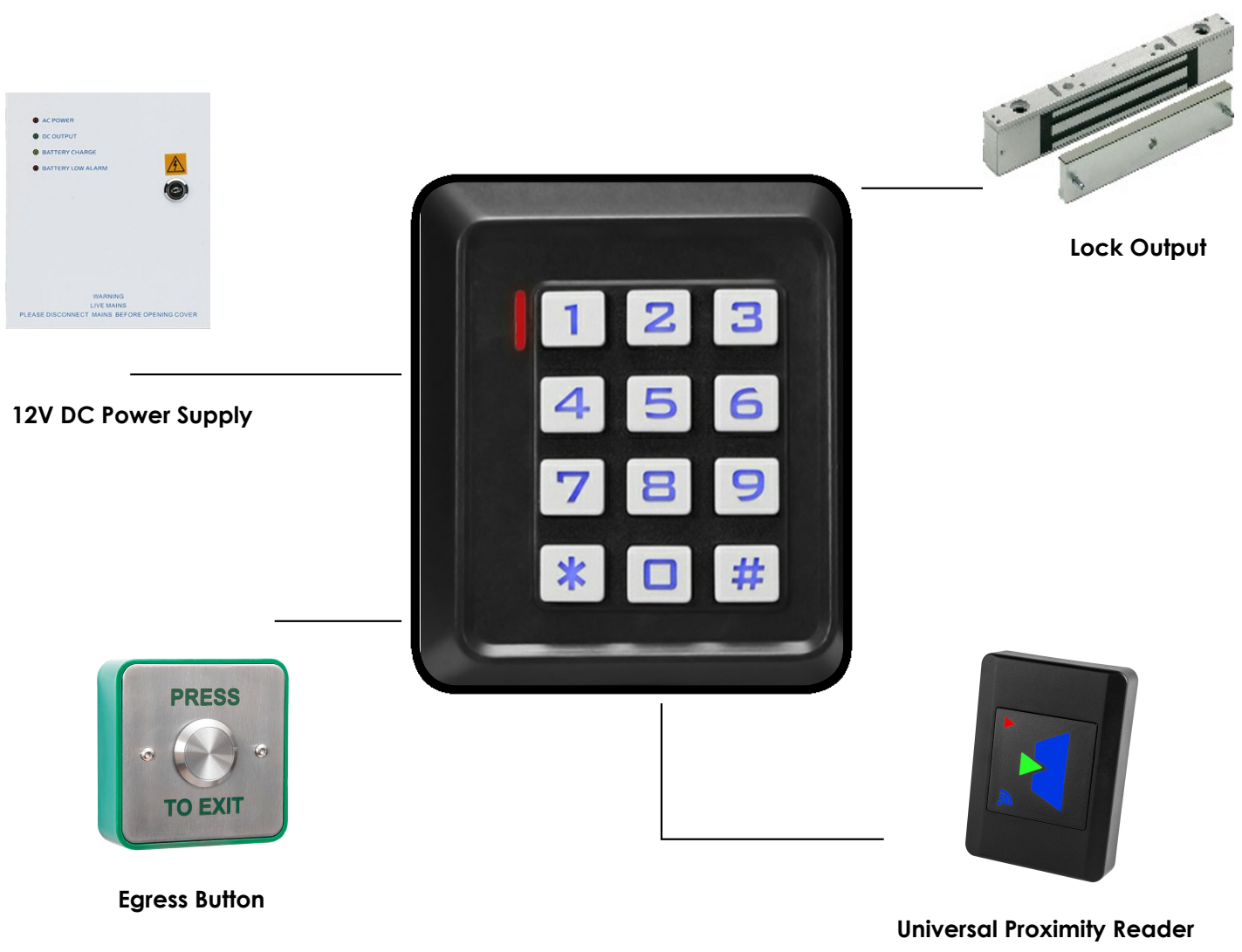


DC260 Stand Alone Access Control Unit

The DC260 is a standalone door access control unit, suitable for use in small shops, factories or office buildings. It's compact in size and the coded access keypad is manufactured from ABS plastic, designed for indoor use.

-
- Single door access control
 - Read In / Read Out
 - 2000 card capacity
 - Cards (tokens) individually added / deleted
 - Easy to install & set up
 - Proximity (125kHz)
 - Timed exit request
 - Door monitoring (relay)
 - Lock timer (0199 seconds)
 - Non volatile data storage (10 years)
 - Fully CE compliant

Standard Layout for DC260



DC260 Access Control

The DC260 is a standalone access control unit with read in/out capability. It features a built in 125kHz proximity reader for adding cards.

The device has an anti-tamper feature with built-in buzzer alarm, as well as an adjustable strike lock opening time which can be set by the installer.

It also includes a status indicating LED which can inform the user if they have been permitted or denied access.

The keypad has a capacity of up to two thousand users, these are controlled using either a supported proximity card or a four digit PIN code.

Technical

Product:	DC260
Voltage:	12VDC
Current:	Quiescent 25 mA Operating 60 mA
Operating Temp.:	-45 to 60 °C
Dimensions:	83 x 143 x 26 (hwd mm)
Data:	10 Years
Lock Relay:	Max 3A
Reader:	125kHz Weigand
Cards:	2000