



# Digitha

## Digital entry panels

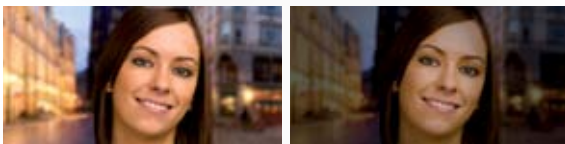
A stainless steel entry panel that is particularly sturdy and highly functional. With BPT's focus on making the best possible use of internal and external space, as well as the numerous features made possible by the digital pushbutton panel. Digitha offers unparalleled performance, ultra-compact design and the sophisticated XiP digital control system is the ideal solution for residential systems.

DigithaUK versions have been produced specifically for the UK market to enable the incorporation of a third party proximity access control reader if required. Both Digitha and DigithaUK are made to the highest standards with all of the quality technology BPT products are renowned for.

- Elegance and discretion
- Superb video quality, day and night
- Vandal resistant

## Perfect colour in any condition

The sophisticated light guide system, developed jointly with the Plast Optica Research Centre (a division of FIAT's research centre), guarantees perfect night-time illumination. The latest digital sensors, together with sophisticated image-processing algorithms, guarantee superlative video quality in any ambient conditions.



## Versions



Standard Digitha  
Video entry panel

DigithaUK with  
prox cutout

## Digital camera angle adjustment

Digitha features the "wide eye" system (angle of lens aperture: 55°), which gives an extra-wide field of vision (for example, from a distance of 50 cm from the entry panel, the camera can capture an image 86 cm in width and 57 cm in height). At the moment of installation of the entry panel, the angle of aperture can be reduced to as little as 37° by digitally adjusting the zoom and the camera can be oriented in the desired direction.

