

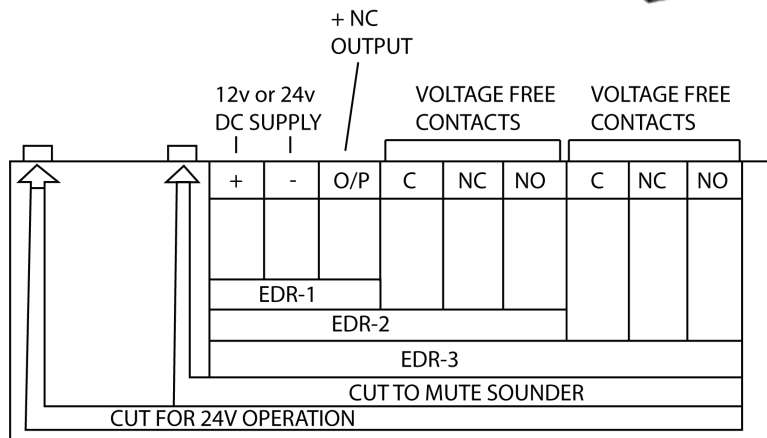
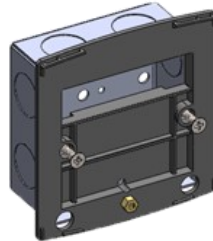
### Installation of Surface Box (Surface fitting)

1. Fix **surface box** on the wall as desired using holes and the knockouts as required.
2. Make connections as per connection diagram.
3. Fix the **front cover** on to the **surface box** with slotted screw provided.

### Installation Direct on Wall (Flush Fitting—Without Surface Box)

**Flush fitting can only be done on a single gang box with interface plate**

1. Fix the **interface plate** to the **gang box**.
2. Remove the **front cover** from the **surface box**.
3. Push the **front cover** on to the **interface plate**, ensuring the top lugs lock into the **front cover**.
4. Fix the front cover to **interface plate** with slotted screw provided.



EDR-1: The O/P terminal is a N/C + output. If a lock is operated then this positive+ output goes direct to the lock. When the unit is operated this supply gets cut. It must be remembered if any controls i.e. keypad are in use then the positive+ supply to the EDR should come via keypad relay.

EDR-2: As above for positive+ output. Hence the C/NC/NO relay can be used to supply neg– direct to lock in most installations i.e. neg– to C then N/C to lock.

EDR-3: As EDR-2, hence C/NC/NO can be used to signal remotely that the unit has been pressed i.e. supply pos+ to the C and then N/O to a remote sounder. On unit activation the sounder will sound until unit is reset.

## EMERGENCY DOOR RELEASE

**Complies with Risk Assessment – RA001, EN50133 and Industry Codes of Practice**

### Contents

**The following items are included with the unit:-**

1. Plastic reset key – 2Nos.
2. Flush fitting interface plate

### TECHNICAL SPECIFICATION

#### 3 MODELS

- EDR-1 = Positive+ NC output
- EDR-2 = Positive+ NC output & 1 x C/NC/NO
- EDR-3 = Positive+ NC output & 2 x C/NC/NO
- Audible (Selectable)
- Red LED Warning
- Size – 90H x 90W x 55d (all mm)

### Operation

1. To activate the emergency feature, lift the clear flap and press the **push plate** where indicated.
2. This will change the colour of the illuminated window from white to red and a buzzer will start sounding.
3. On activation the **push plate** will move backward, and the **yellow indicator bar** retaining the **push plate** will drop down preventing un-authorized reset.
4. To reset the unit after activation, the **reset key** must be used to make the unit operationally ready again. Insert the key in the correct orientation, push it to the limit of the key and then turn it clockwise. This will allow the **yellow indicator bar** to return to its original position and the **push plate** will be reset.

