

Technical Specifications

	A	B	C
Output Power	1.5W±5%	3W±5%	5W±5%
Standard Charging Current	250mA±5%	500mA±5%	833mA±5%
Open Circuit Voltage	7.2V±5%		
Standard Operating Voltage	6V±5%		
Solar Cell Material	Monocrystalline Silicon		
Substrate Material	PET		
Casing Material	ABS		
Connector	2-core wire with stripped and tinned ends		
Operating temperature	-20°C~60°C		
Relative humidity	10% ~ 90% (RH)		
Cable Length	3m±5%	2m±5%	
Dimension	153x139x11mm	120x175x15mm	168x183x15mm

NOTICE:

This manual is for the purpose of product use and operation.
Design and specifications are subject to change without notice.

Version 1.0

3



SRS
door entry systems

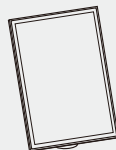
SOLAR PANEL

USER MANUAL



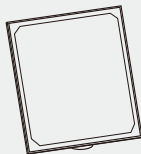
SOLPAN2W

A



SOLPAN3W

B



SOLPAN5W

C

Features

Suitable for the outdoor units, outdoor cameras, outdoor lights and others which need to charge power.

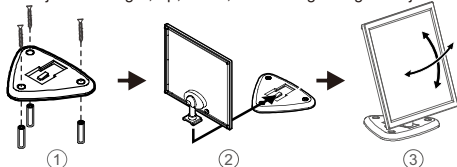
Package Contents

Solar Panel x1 , Bracket x1 , Screw Pack x1

Installation Instruction

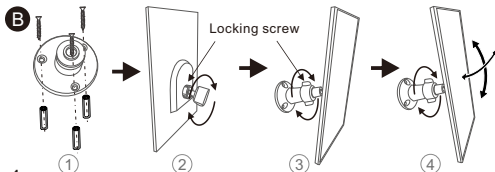
A

1. Secure the bracket onto wall by using screws.
2. Snap the panel into the bracket.
3. Adjust the angle, up, down, left and right angles adjustable.

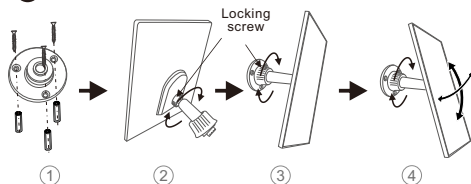


B C

1. Secure the bracket onto wall by using screws.
2. Install the bracket adjuster to the solar panel, then tighten the screw.
3. Attach the solar panel to the bracket, then half-tighten the locking screw.
4. Adjust the angle, up, down, left and right angles adjustable. After adjusting, tighten the locking screw.



C



Precautions

1. Install in a location with sufficient sunlight, such as a roof or balcony.
2. Adjust the orientation and angle to maximize the solar panel's exposure time.
3. Ensure electrical connections are secure and avoid reverse polarity, short circuit and so on.

Connection

