

# 7" VIDEO DOORPHONE

USER MANUAL



7054WKIT-01TAG

Version 1.0

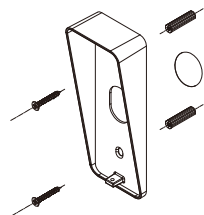
## What's Included

	- Indoor Unit - Bracket	1
	- Outdoor Unit - Rain shade	1
	Adapter	2
	Screw Pack	1
	User Manual	1
	2-Pin cable for EXIT button	1
	4-Pin cable	1
	ID cards	N

## Installation Instruction

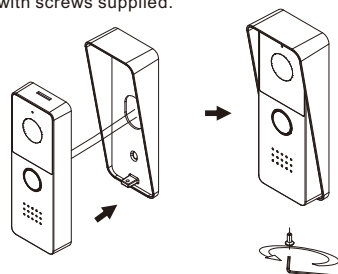
### A. Outdoor unit installation

1. Fasten the rain hood to the wall with screws supplied.



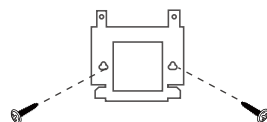
2. Connect the wires according to the wiring diagram.

3. Fix into rain hood and fasten the base with screws supplied.

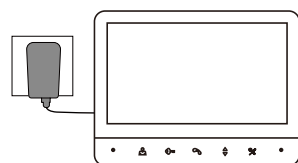


### B. Indoor unit installation

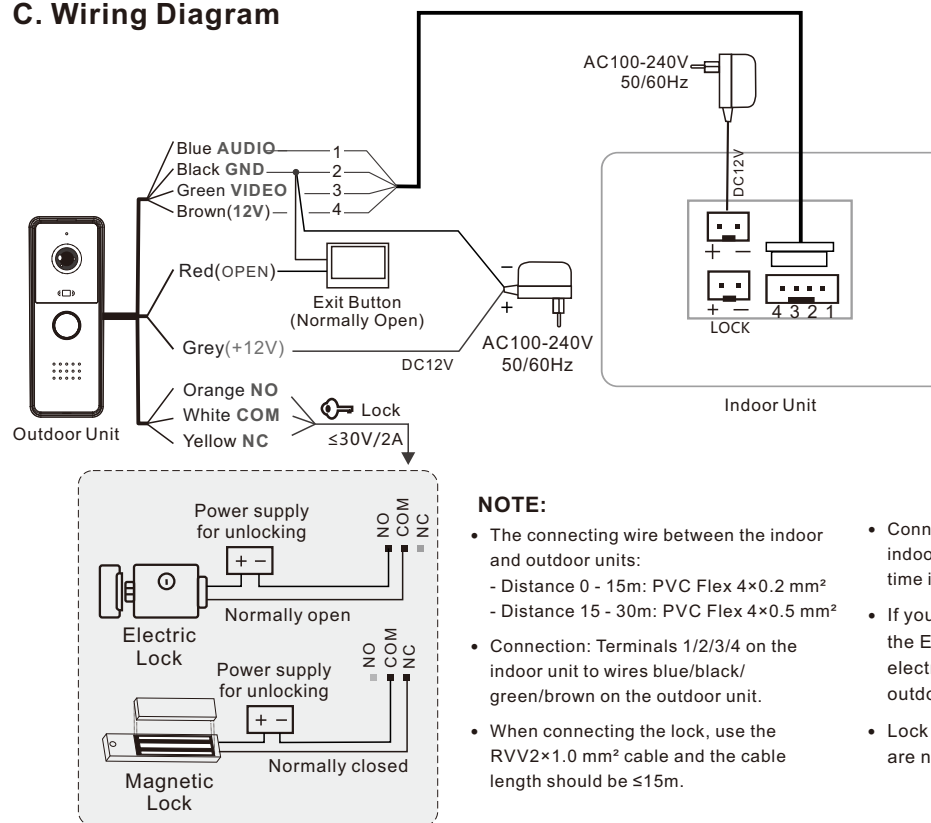
1. Fix the bracket on the wall with screws.  
(1.4-1.6m high from the ground )



2. Connect the wires according to the wiring diagram.
3. Hang on the bracket.
4. Connect the power supply.



## C. Wiring Diagram



## Features

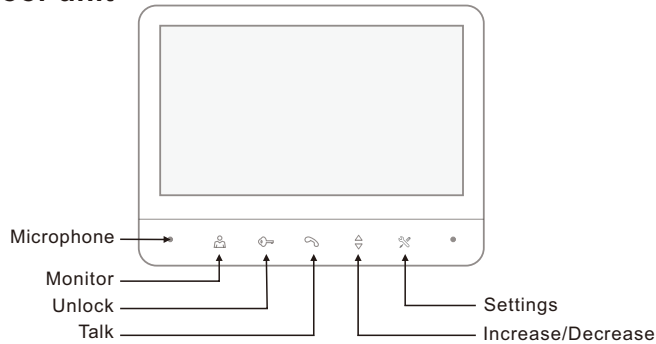
- 7inch TFT screen with widescreen images and no radiation, low power consumption but high definition.
- Release the electric lock.
- Monitor the outside.
- 16 Ringtone melodies.
- Talking volume, image brightness and chroma settings.
- Night vision.
- Light compensation for night vision.
- ID card and Exit button unlock.

## Troubleshooting

- Turn off the power before wiring.
- Use a slightly damp soft cloth to clean the camera or screen.
- The outdoor unit must not be directly exposed to sunlight.
- Problems unlocking, check to see if the wires are connected properly and securely, also check the voltage is sufficient.
- The image quality may be interfered by strong electromagnetic signals, therefore, when using the product, avoid the electromagnetic sources such as motor and transformer and make sure the circumstance is barrier-free and no interference.

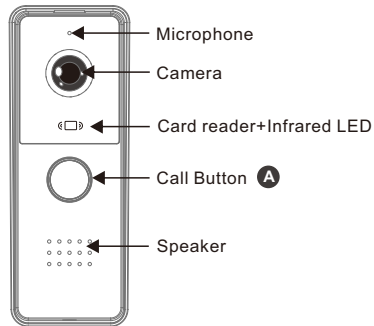
## Operation Instruction

### A. Indoor unit



- 1) When the visitor presses **CALL Button** on the outdoor unit, the indoor unit will ring and display the visitor's image on the screen. Press **TALK** ( ) button on the indoor unit to talk with the visitor. The talking time is 120s. During the 120s, you can:
  - Press **UNLOCK** ( ) button to release the electric lock
- 2) Press **MONITOR**( ) button to monitor the outdoor unit, the monitoring time is approx. 40s, press again the button to exit.
- 3) Press **MONITOR**( ) button and then **TALK**( ) button to see and talk to the someone standing before the outdoor unit. After, press again **TALK** ( ) button to exit.
- 4) Ringtone, ringtone volume, talking volume, brightness and chroma settings as below:
  - In the monitoring or calling status, press the ( ) button, the settings option will be displayed at the upper right corner of the screen, you can continuously press the setting button to go through the cycle "Ringtone Setting" ' ' -> Ringtone volume setting ' ' -> Talking volume setting ' ' -> Brightness setting ' ' -> Chroma setting ' ' -> Exit".
  - After selecting the option, during the setting you can press ( ) to increase or decrease the value.

### B. Outdoor unit

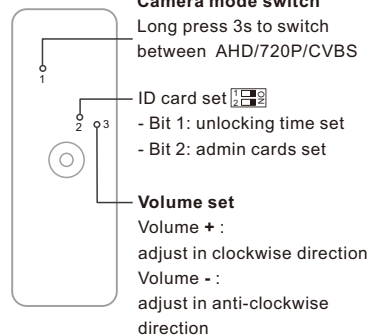


#### NOTE:

Light indicator as below:

- Solid green: Unlocking
- Solid blue: Calling

In standby mode, the light indicator will be solid blue if there is a 5V power output from the indoor unit.



**Camera mode switch**  
Long press 3s to switch between AHD/720P/CVBS

**ID card set**   
- Bit 1: unlocking time set  
- Bit 2: admin cards set

**Volume set**  
Volume + :  
adjust in clockwise direction  
Volume - :  
adjust in anti-clockwise direction

### Outdoor Unit Operation

#### Unlocking time setting

Step 1: Power off, slide bit 1 to position NO ( ) to set unlocking time to 5s or to position OFF ( ) to set unlocking time to 1s.  
Step 2: Power on, it will return to normal use mode.

#### ID Card Settings

1. Set the Admin Cards: Slide switch's bit 2 to position " ", it will sound 3 short tones and 1 long tone to indicate that it has entered admin cards set mode.. Now swipe 2 ID cards, of which the first one will be set as the Add Card and the second one will be set as the Delete Card. After continuously swipe anyone of the 2 cards 3 times to exit the mode (After the setting above, slide the bit 2 to position " " and power on again.).
2. Under normal mode, swipe the Add Card, then swipe the user cards that you want to add, and then swipe the Add Card again to exit.
3. Under normal mode, swipe the Delete Card, then swipe the user cards that you want to delete, and then swipe the Delete Card again to exit.
4. Swipe the Add Card and then swipe the Delete Card 2 times, system will reboot.
5. Swipe the Delete Card, then swipe the Add Card 2 times, and then swipe the Delete Card, system will delete all user cards.
6. Swipe the Delete Card, then swipe the Add Card 4 times, and then swipe the Delete Card 2 times, system will initialize all data and reboot.
7. When system is powered on, it will enter initialization mode if it finds the storage chip is not yet initialized. The buzzer will give a 3-second long tone to indicate it.
8. Support up to 502 ID cards including the Add Card and Delete Card.
9. The card with green color is the Add Card while the one with red color is the Delete Card. The cards with black color are user cards.

### Prompt tones for swiping card

Explanation	Prompt tones
Valid card	1 short beep
Unlock successfully	1 short beep
Invalid card	2 short beeps
Create Add Card successfully	1 short beep
Fail to create Add Card	2 short beeps
Create Delete Card successfully	1 short beep
Fail to create Delete Card	2 short beeps
Duplicate card number	1 short beep and 1 long beep
Exit Add Card mode	2 long beeps
Exit Delete Card mode	2 long beeps
Enter Add Card mode	1 long beep
Enter Delete Card mode	1 long beep and 1 short beep

### Specifications

#### Indoor unit

Adapter *	Input: AC100-240V 50/60Hz Output: DC12V 2A
Screen Size	7"
Screen Resolution	1024×600(RGB)
Power Consumption	Static State<3W, Working State<10W
Operating Temperature	-10°C~40°C
Relative Humidity	10%~90%(RH)
Talking Volume/ Ringtone	<80dB(30cm), 1-10 levels adjustable

### Outdoor unit

Camera	2MP 1080P/720P / CVBS
Viewing Angle	AHD 127° / 720P 124° / CVBS 120°
Night vision LED	940 nm (Infrared)
Talk Volume	≈80dB
Unlocking	Dry contact
Unlock Method	1. Indoor unit 2. ID card 3. Exit button
Outline Size	142.3*53.5*30.2mm
Operating Temperature	-10°C~50°C
Relative Humidity	10%~90% (RH)

#### NOTE: ★

Actual specification may vary, please refer to the label on the power adapter supplied.



#### NOTICE:

This manual is for the purpose of product use and operation. Design and specifications are subject to change without notice.