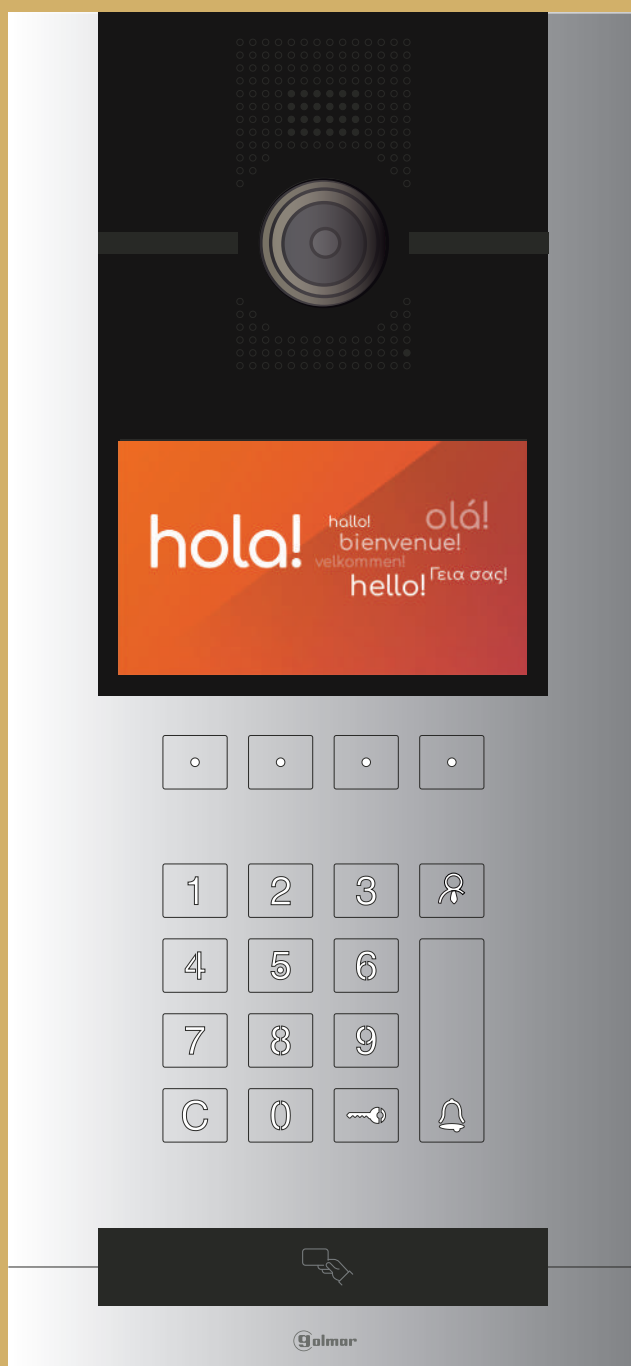


G2+

6502/G2+

INSTALLER MANUAL



INDEX

1. Safety cautions.....	3
2. Specifications.....	3
3. Panel description.....	3
4. Initial configuration	4
5. Access control and lock settings	5
5.1. Modify access code	5
5.2. Manage access cards.....	5
6. Additional settings.....	7
6.1. Display settings.....	7
6.2. Video settings.....	8
6.3. Audio settings.....	8
6.4. Special calling methods settings.....	8
7. Modify settings access password	9
8. About.....	9
9. Initial configuration through the web client.....	10
9.1. Settings.....	11
9.2. Name list	12
9.3. Access cards	14
9.4. Log events	14
9.5. About.....	15
10. Remote access to the 6502/G2+ door panel web client.....	15
11. Installation diagrams	16
11.1. Distributed audio installation	16
11.2. Daisy-chain audio installation.....	16
11.3. Distributed video installation	15
11.4. Distributed mixed installation	16
11.5. Daisy-chain video installation without distributors.....	16
11.6. Video installation in risers with distributors.....	17
11.7. Video installation in risers with monitors in daisy-chain connection mode	17
11.8. Single lock release connection	18
11.9. Double lock release connection	18
11.10. 4 door panels connection.....	19
11.11. Additional analog CCTV camera connection	19

1. SAFETY CAUTIONS

The installation and setup of this equipment must be done by an authorized installer.

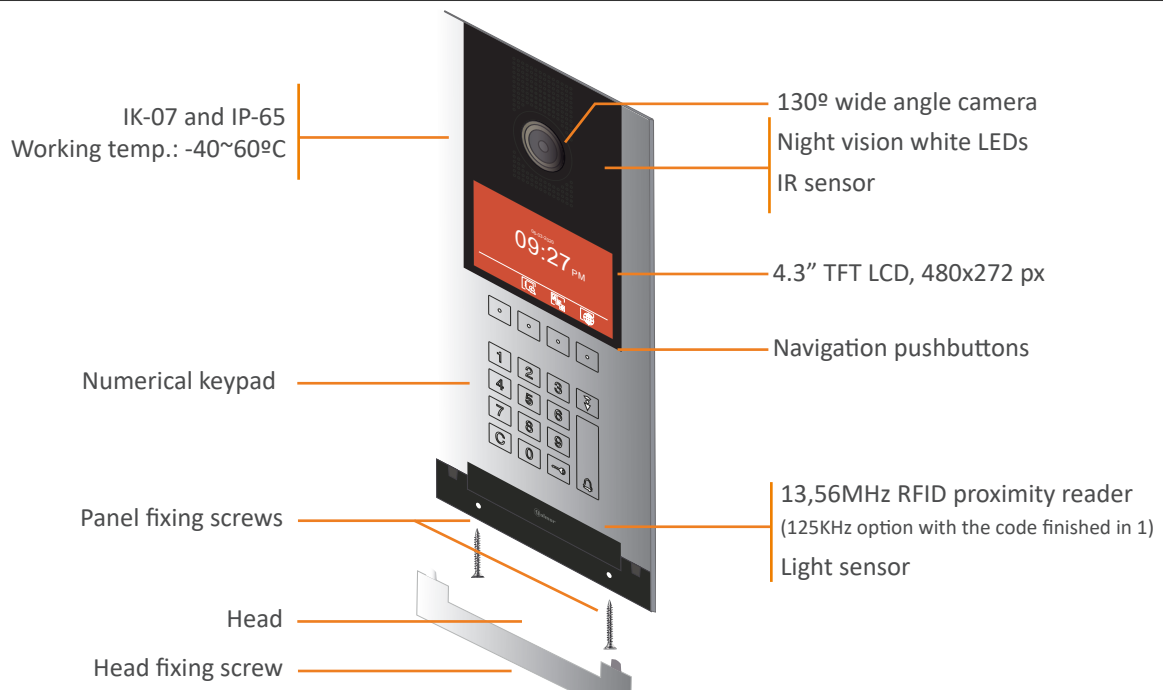
- The current regulations oblige to protect the power supply by means of a thermal magnetic circuit breaker.
- All the installation conduits must distance at least 40 cm from any other installation.
- In regards of the power supply FA-G2+:
 - Do not tight with excessive strength the screws of the terminal block at FA-G+ power supply.
 - Install the power supply in a dry and secure area, protected against water drops.
 - Avoid placing the power supply close to heating sources, humid or dusty areas.
 - Do not cover the power supply ventilation openings area to assure air flow circulation.
 - To prevent damages, the power supply has to be strongly mounted. Use a DIN rail 46277 (8 DIN) to fix it.
 - To avoid an Electrical shock, do not remove the protection cover and do not manipulate the cables connected to the power terminals.

2. SPECIFICATIONS

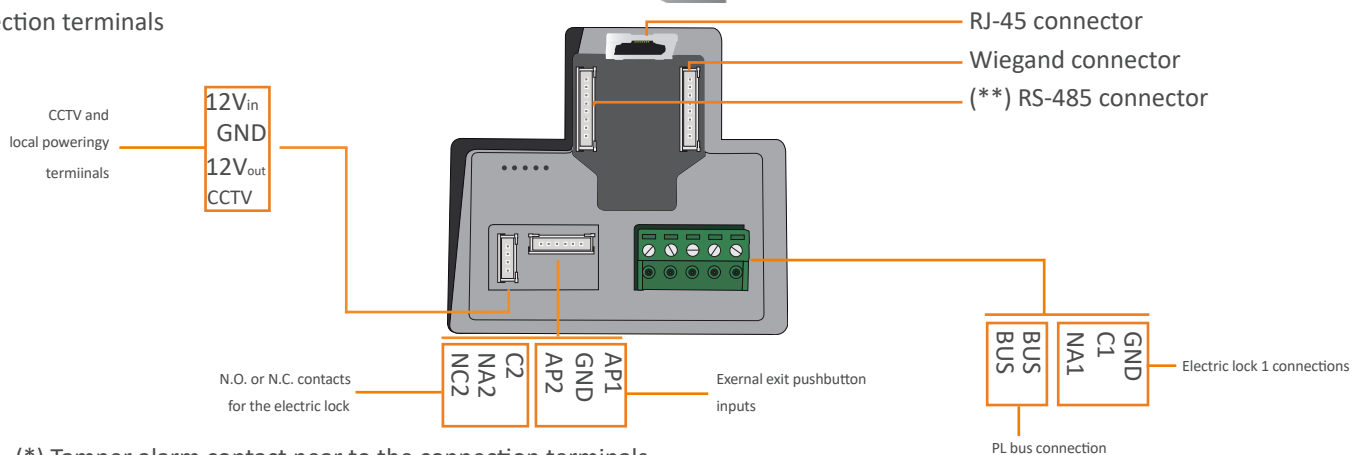
- 2 wires video intercom system.
- It is recommended to make the installation in a wired structure through 1mm of section, low capacity and free-halogens RAP-GTWIN/HF wire.
- Up to 32 buildings for each installation.
- (*) Up to 4 general door panels for each installation and 4 door panels for each building.
- Up to 128 apartments for each building, with the possibility to install up to 4 indoor units in each of them.
- Possibility to install a general guard unit for installation or one for each building.
- Up to 16 IP ONVIF cameras for each building with the DQ-IPCAM/G2+ module.
- (*) If more than 4 door panels are needed, consult our technical service.

3. PANEL DESCRIPTION

- Front side



- Connection terminals



(*) Tamper alarm contact near to the connection terminals.

(**) Connector for the input of IP Opener antennas.

4. INITIAL CONFIGURATION

To configure a panel as a block panel, do the following steps:

- 

1 Access to the configuration by pressing 5 times in the indicated pushbutton.
- 

2 (*)Enter the installer code **2718** through the keypad and validate it.
- 

3 Press the "Door panel" option from the settings menu (1/4).
- 

4 Choose the "Address" option of the door panel settings (1/5).
- 


5 Choose the **Block** mode with the arrows and validate the selection.
- 

6 Enter, through the keypad, the block number "1" and press over the validate option.
- 

7 Enter through the numeric keypad the **panel number "1"** and press validate. Contact with the Golmar technical service to install more than 4 door panels.
- 

8 Choose the automatic IP assignment. In this way, the door panel will take the **192.168.100.101** IP address. The IP address will be different if other parameters were entered.

If it is necessary to us another IP address on the panel, it can be set in a manual way. To do that, you must follow the before described steps but, in the step 8 you must choose the **Manual** mode, and then follow the steps described below:

- 


9 Enter the desired IP address for the door panel and press validate.
- 


10 Enter the subnet mask of the door panel and press validate.
- 

11 Enter the Gateway address and press validate.

Once all the previous steps are done, a confirmation screen will appear.

In systems with general panels, these must be programmed in the same way as described before but, in the step number 5 the "**General**" option must be chosen.

- 

5 Choose the **General** mode with the arrows and validate the election.
- 

6 (**)Enter through the numerical keypad the number of **general panel** and press validate

You must finish the configuration process in the same way as if it was a block panel.

(*) It is recommended to change the installer code that is mentioned in this manual.

(**) Contact with the Golmar technical service to install more than 4 general door panels.

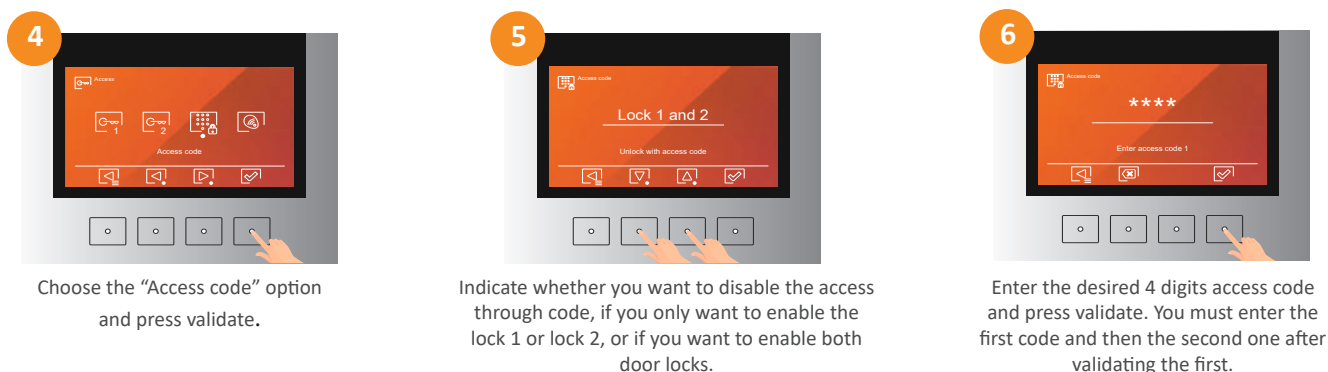
5. ACCESS CONTROL AND LOCK SETTINGS

From the “Access” menu is possible to modify the settings and access codes as well as add or delete access cards for users or administrators. Below, appears how to adjust the two built-in door lock relays in the 6502/G2+ door panel:



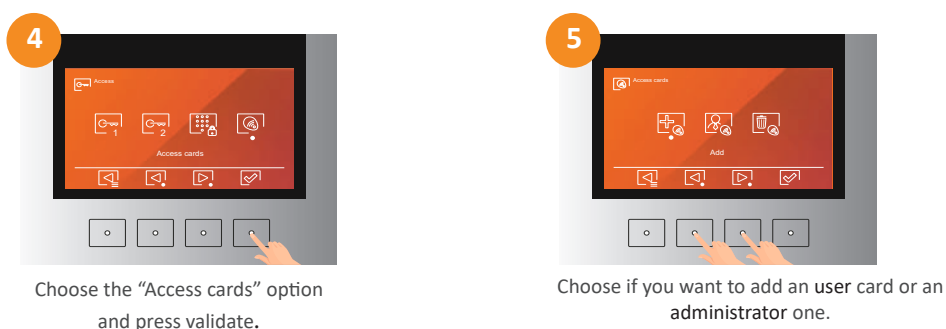
You must do the same procedure to modify the door lock 2 parameters. Only, you must choose the “Lock 2” option in the step 4.

5.1. Modify access codes



5.2. Manage access cards

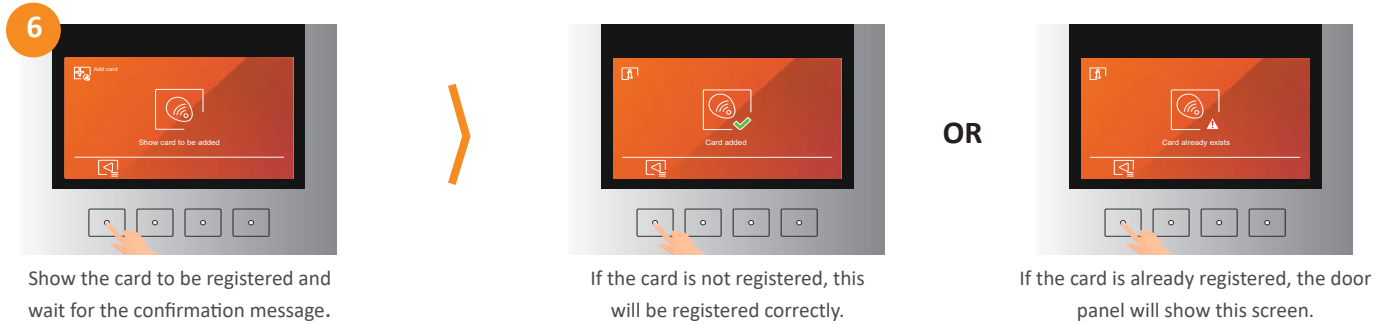
For registering the access cards to the building or delete the cards already registered, do the following steps:



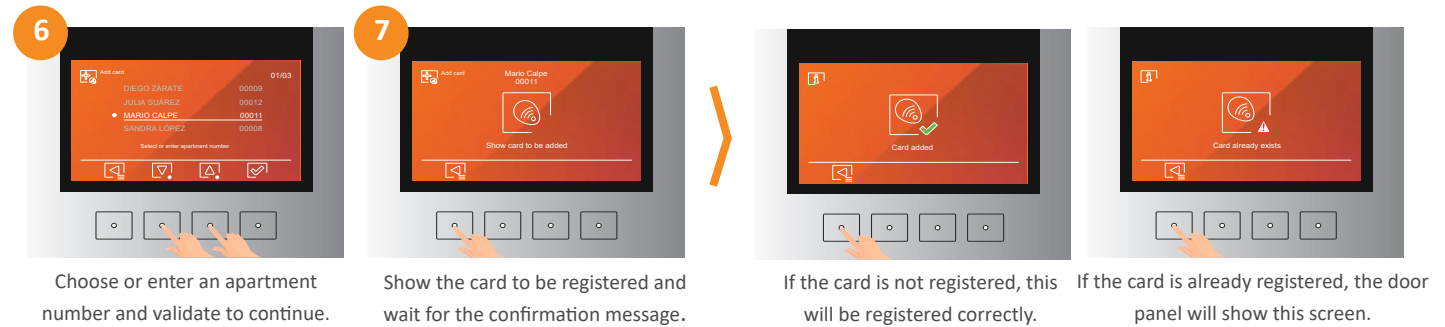
You can register a total of 2000 access cards or fobs and assign them as user or administrator cards. In case of existing an addressbook, the user access cards will be assigned to the apartment, being able to register up to 5 cards for each apartment, while the administrator access cards don't belong to any system address.

If you want to add access cards for users, you must choose the “Add card” option. The next screen in appear will depend on whether or no there is a created addressbook in the 6502/G2+ door panel. Below, is explained how will be the procedure to follow in both cases:

- There is not an addressbook

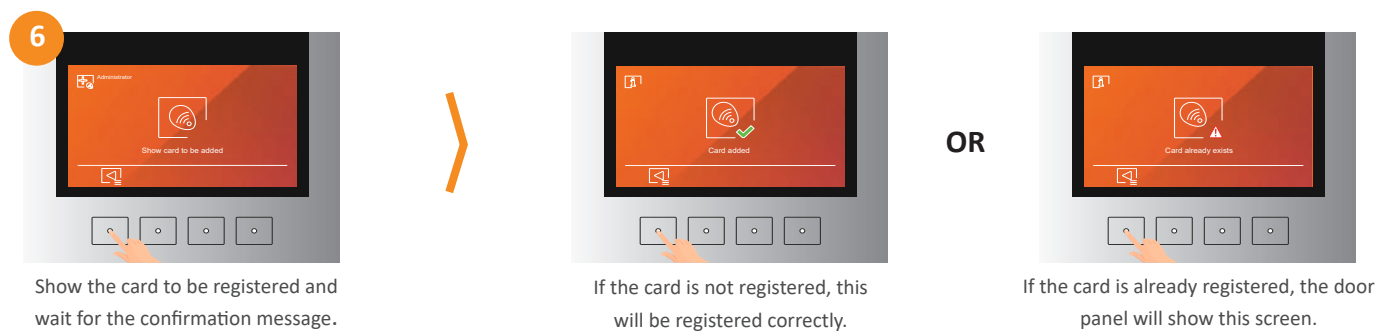


- There is an addressbook



Adding administrator access cards

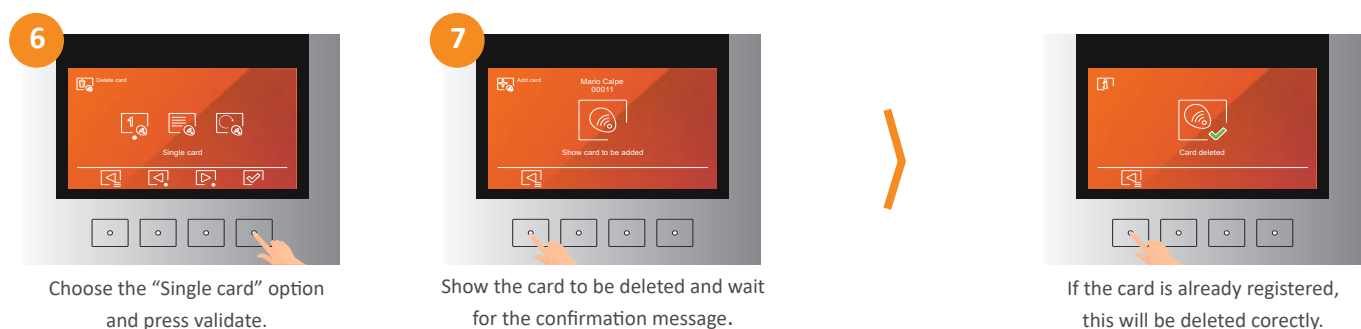
If you want to add access cards for administrators, as can be the block guard or the community administrator, you must choose the “Administrator” option and follow the same steps as in the case of adding user access cards. The administrator cards are not assigned to any apartment.



- Deleting access cards

If you want to delete the registered access cards in the door panel, you must choose, in the step 5, the “Delete card” option. The door panel will give you the option of delete a single card, delete all the cards in an apartment or delete the whole number of registered cards in the door panel. Below, is shown how to do any of the different options:

To delete a single access card from the 6502/G2+ door panel you must do the following steps:



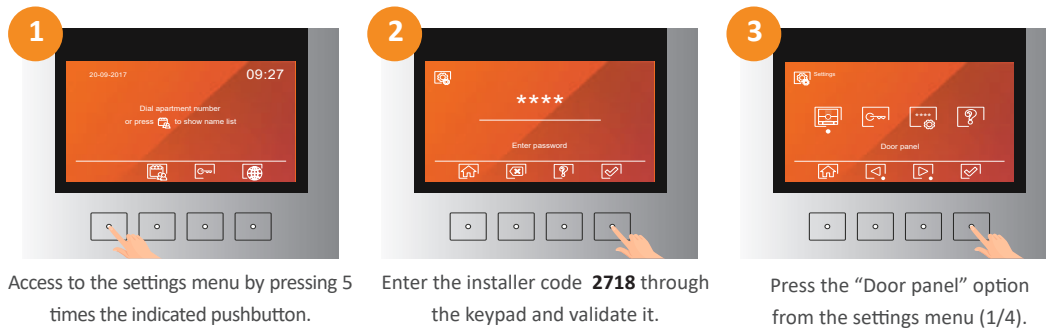
In case of existing an addressbook, to delete all the cards registered in an apartment, you must do the following steps:



6. ADDITIONAL SETTINGS

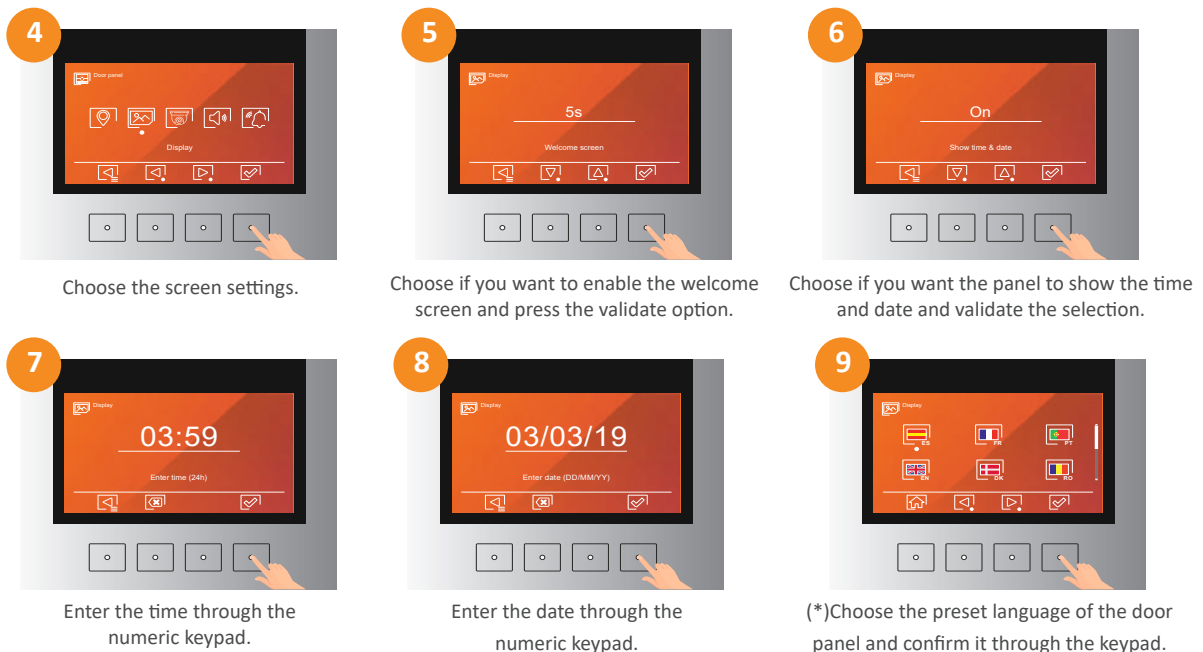
Below, is shown how to modify other parameters related to the screen, the video, and the audio of the 6502/G2+ door panel, as well as the steps to follow to enable the special call methods.

To do these modifications, choose the “Door panel” option in the settings menu:



6.1. Display settings

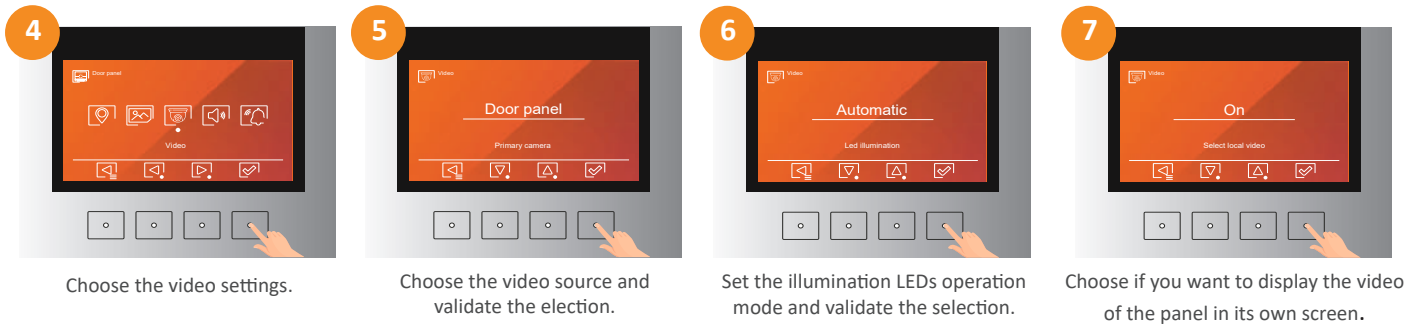
In the screen settings section, it is possible to enable or disable the welcome screen that the door panel shows when it gets enabled from the idle. In the same way, it is possible to show or hide the time and date on the screen and modify these parameters in case that the panel is displaying them.



(*)The door panel will come back to the chosen language when it goes to idle after using it, although the language is changed from the main screen.

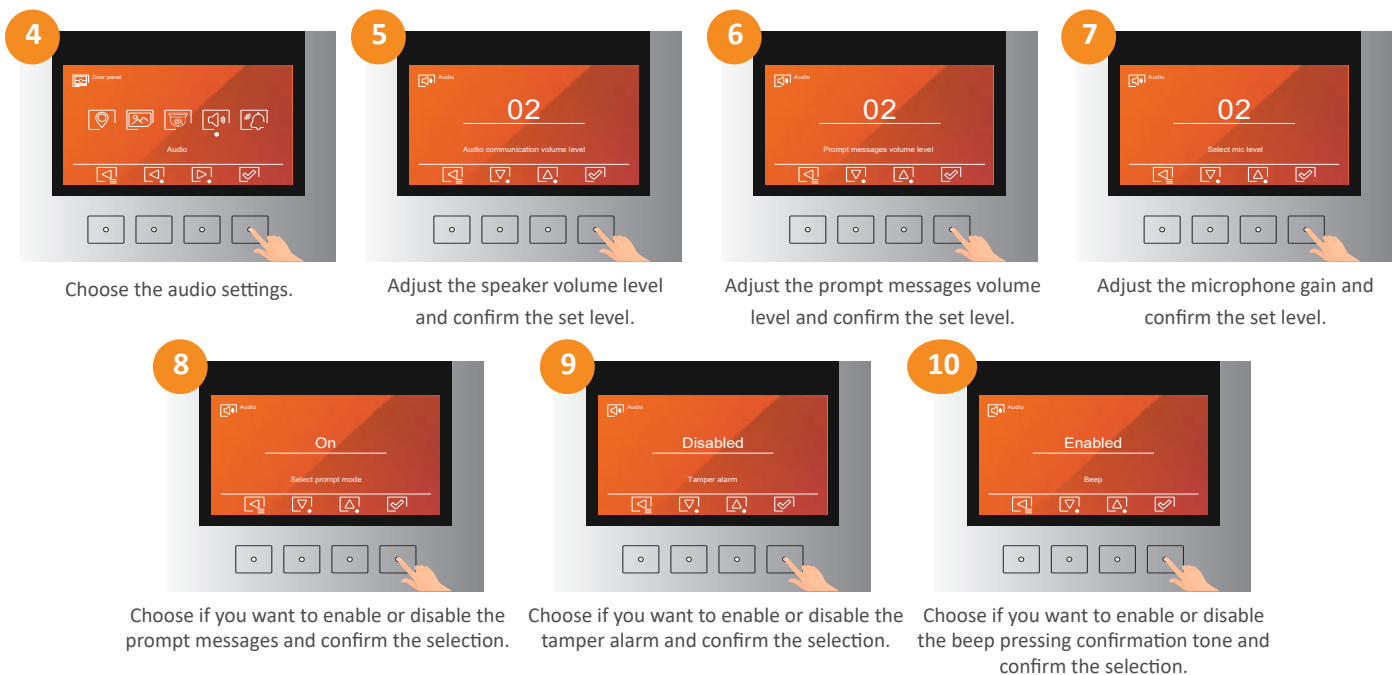
6.2. Video settings

From the video settings section is possible to choose whether the sent video to the monitors in a call process, or a preview process comes from the door panel or from the CCTV input of the door panel. It is also possible to modify the illumination LEDs operation mode and if you want to notify to the visitor, that is being seen by the apartment monitor.



6.3. Audio settings

The audio settings section allows to adjust the speaker volume level and the microphone gain, enable or disable the prompt messages of the door panel, the tamper alarm and the push confirmation tone.

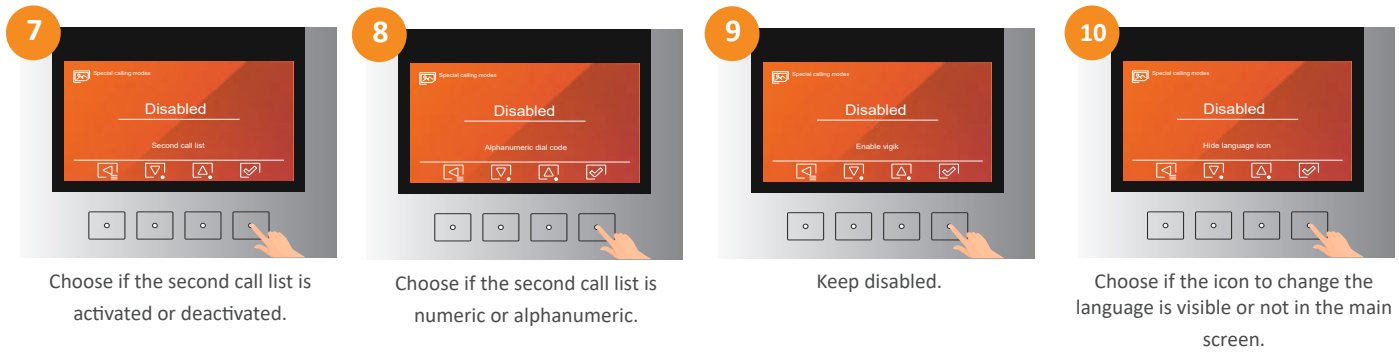


6.4. Special calling methods settings

The special calling methods settings section allows to enable the villa mode, with which the door panel will call to the address1 by only pressing the door bell icon pushbutton, and the direct call to the concierge by pressing the guard icon pushbutton.

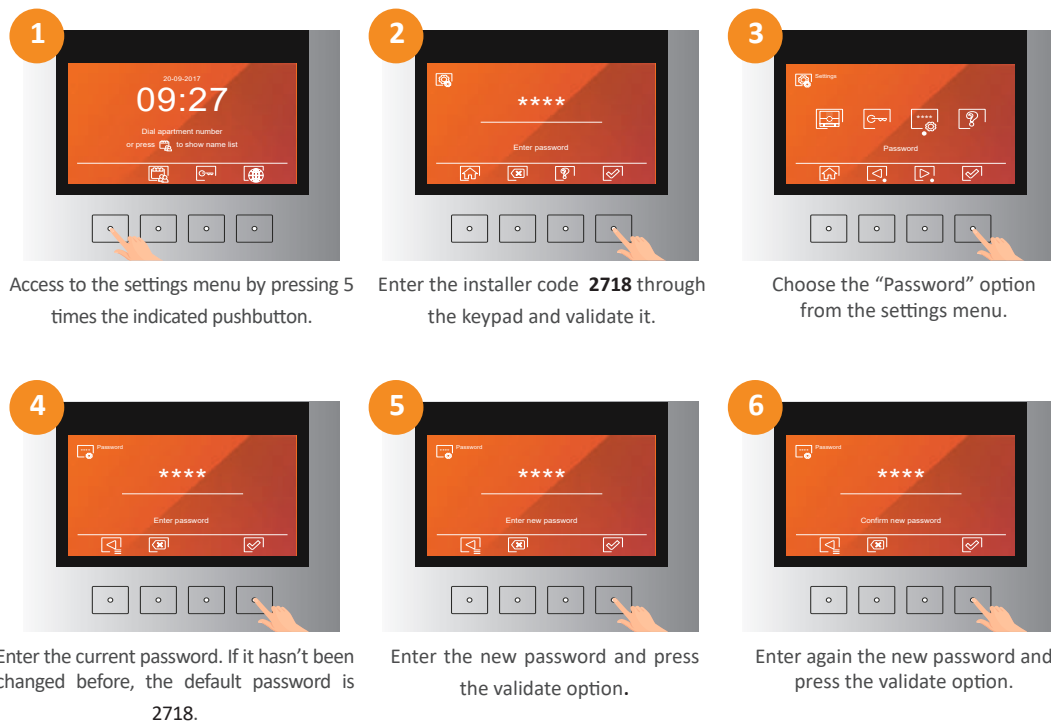


(*)In villa mode the door panel makes a call to the address number 1 with only pressing the bell icon push button.



7. MODIFY SETTINGS ACCESS PASSWORD

Below is shown how to modify the password to access the door panel settings. It is recommended to change the password and set another different to the default one. In this way, you can avoid that somebody can modify some configuration parameters causing a system failure.



8. ABOUT

In the "About" section, is possible to do an user settings reset that will leave the panel with the default additional settings, an all settings reset that will leave the panel with factory default settings, you can display in the screen the QR code that brings you to the door panel manual, and access to the system information section, where appears to which block the panel belongs and which IP address the panel has.

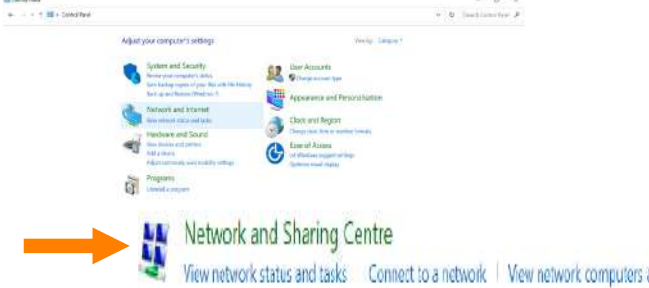


If you choose any settings reset, the door panel will show a confirmation screen to avoid accidental settings reset. Confirm the reset in this screen and wait until the panel is operative again.

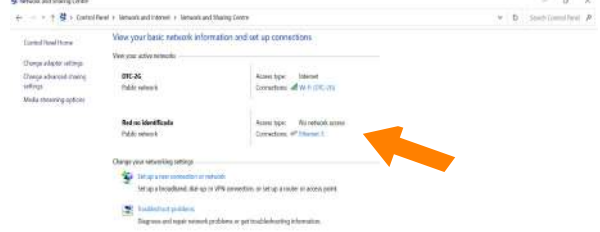
9. INITIAL CONFIGURATION THROUGH THE WEB CLIENT

The 6502/G2+ coded door panel allows to be configured through its web client. To do that, you must connect your computer to the RJ45 connector of the door panel. The factory default IP address is the 192.168.100.101. Make you sure that the network connection of your computer is in the same IP range as the door panel. To do so, you will do the following steps:

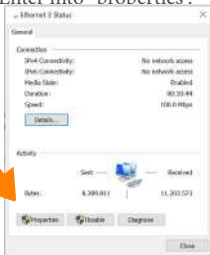
1 Go to network settings in control panel.



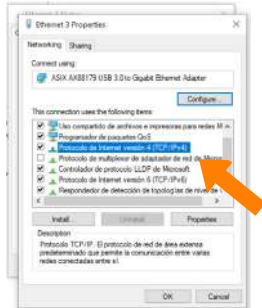
2 Change the active Ethernet network.



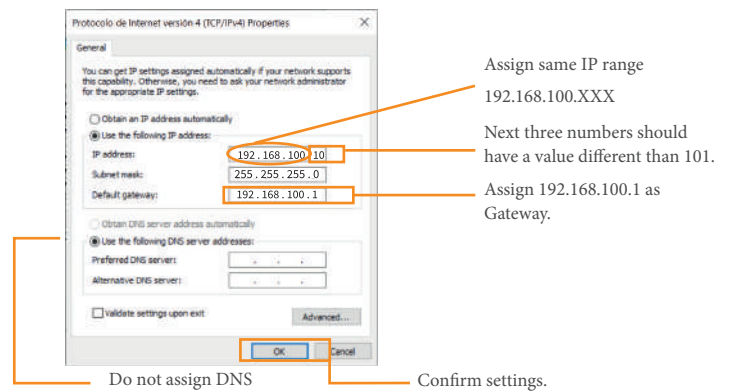
3 Enter into "properties"



4 Select Internet protocol IPv4.

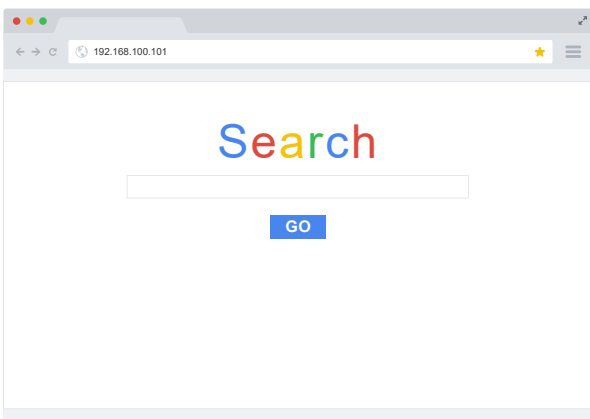


5 Set the IP range.



In this moment, the computer is ready to work in the same IP range as the panel IP address.

Enter the IP address in the web browser: **default IP 192.168.100.101**



Access to the Web Client:



The password to access is 2718.

9.1. Settings

Below is described the initial screen of the web client:

Door panel mode (0 General panel - 1 Block panel).
 (*) Block number (1-32).
 Panel number (1-4).
 (**) Enable the CCTV input as main camera.
 Display images of the door panel camera in the screen.
 Illumination LEDs (0 OFF - 1 ON - 2 Automatic).
 Enable alphanumeric call.
 Enable second call list.
 Prompt messages (0 OFF - 1 Prompt messages - 2 Tones).
 Prompt messages volume level (1-3).
 Audio communication volume level (1-3).
 Microphone gain (1-3).

Apply established settings. Go to the next screen.

(*) In case of being a general panel, it is not necessary to assign a block number to the panel.

(**) If this feature is enabled, the panel will display on its own screen the images from analog CCTV camera input in a call process.

Activate welcome screen.

Activate the push confirmation tone.
 Display time and date on screen.
 Time selection.
 Date selection.
 Language selection.
 Hide language icon in main screen.
 Keep disabled.
 (*) Upload a new welcome screen.
 Restore the default welcome screen.

Go to the previous screen. Apply established settings. Go to the next screen.

(*) The welcome screen file must have a BMP format, a size of 480*272px, and must be saved as "Advertisement.bmp".

Activate opening with access code.
 Access codes 1 and 2.
 Activate tamper alarm.
 (***) Trade button settings.

Go to the previous screen. Apply established settings. Go to the next screen.

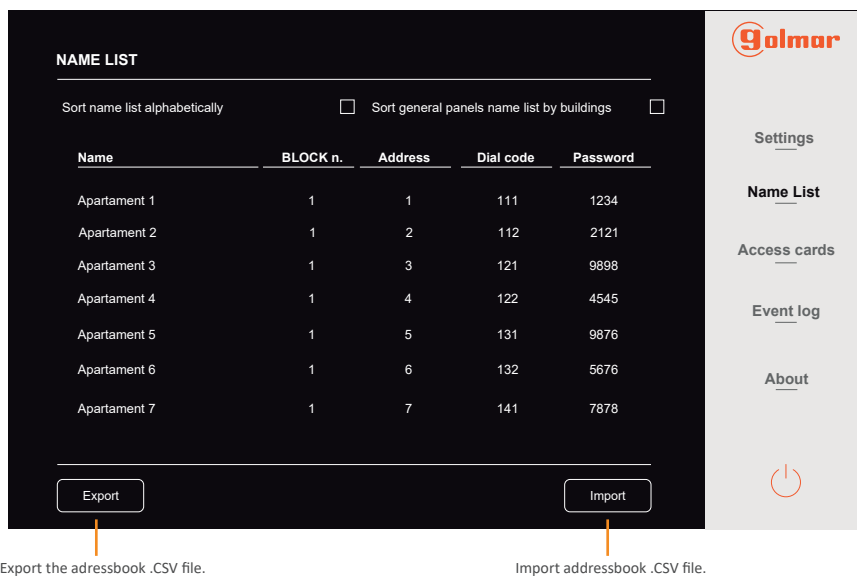
(*) In villa mode, the door panel makes a call to the address 1 by only pressing the bell icon pushbutton.

(**) When pressing the key icon push button, the door panel will open the door during the activation period.



9.2. Name list

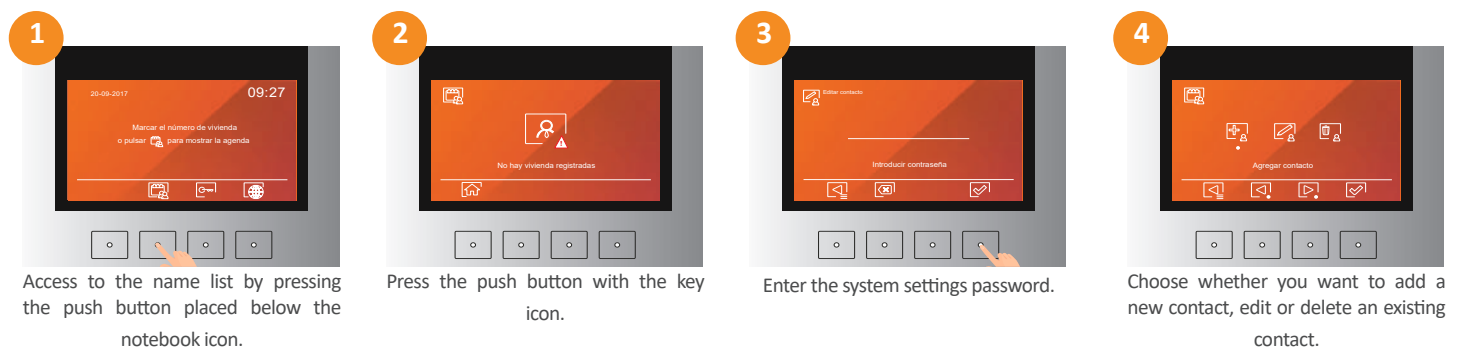
In the “Name List” section appears the address list with the assigned name to each one, the block number to which belong, the apartment number, the assigned call code and the private access code.



To import a .CSV file with the door panel addressbook, this must be saved as “Namelist.csv” and it must have an established format. You can download a sample file or export the existing file, modify it, and then upload it by matching the established format. You can download a generic file in the “Download” section of the product website: <https://www.golmar.es/products/6502-g2-plus#product>

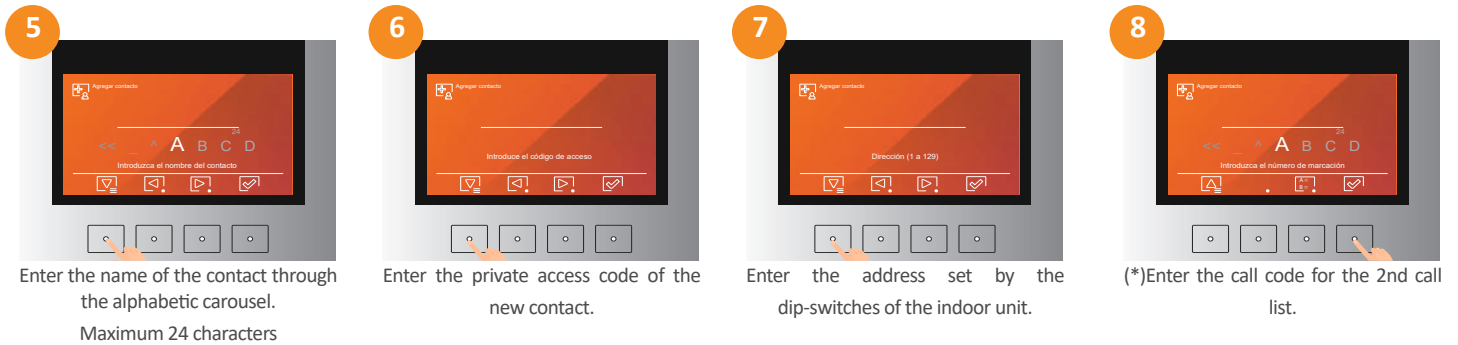
Manually manage of the name list

Either you want to create or modify some contact of the door panel name list follow the next steps:



Add a contact

If you want to create a new contact in the name list follow the next steps:



Alphabetic carousel

Use the navigation push buttons in the middle to move through the different characters of the carousel. When the desired character is found, confirm the selection with the right navigation push button. If the chosen character contains special characters (if the chosen letter is the “A”, then “Á”, “À”, “Ä”,... will appear) choose the desired one and confirm the selection.

To delete a character, look for the “<<” character in the carousel and confirm with the right navigation push button the deletion of the character.

With the “^” character is possible to switch between upper and lower case letters.

If there is an existing name list, the door panel will show the name list in the screen to choose in which position the new contact will be added.

(*) The 2nd call list sets an alternative dialling way to call to the indoor units. This can be numeric, but also alphanumeric codes are allowed.

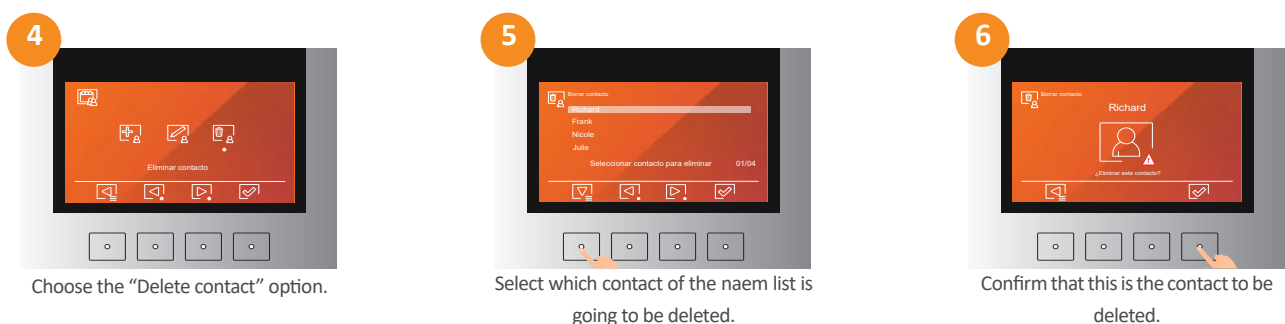
Edit contact

If you wish to edit a contact of the name list of the door panel follow the next steps:



Delete contact

If you want to delete a contact from the name list of the door panel follow the next steps:



9.3. Access cards

In the “Access cards” section appears detailed the list of access cards in each of the system addresses. These appear listed following the order of the registration in each address.

The screenshot shows the 'ACCESS CARDS' section of the Galmar interface. It features a table with three columns: 'BLOCK n.', 'Address', and 'Card ID'. Below the table are 'Export' and 'Import' buttons. A sidebar on the right contains navigation links: 'Settings', 'Name List', 'Access cards', 'Event log', and 'About', along with a power icon.

BLOCK n.	Address	Card ID
1	1	a8efff
1	2	a8597c
1	3	8b729c
1	4	a8be53
1	5	436452
1	6	8d2ad5

Export the access cards .CSV file.

Import the access cards .CSV file.

To import the .CSV file of the access cards, this must be named as “Carddata.csv” and must have an established format. You can export the existing file and upload it again to the panel after the modification by matching with the established format.

9.4. Log events

In the “Event log” section appear detailed the events that have occurred in the system such as callings, and door opennings. These events appear sorted according to the time and date when these have taken place. Is possible to access to the whole list from the web client or exporting it to be able to have a phisical document with the complete log event.

The screenshot shows the 'EVENT LOG' section of the Galmar interface. It features a table with four columns: 'Event type', 'Address / Code', 'Time', and 'Date'. Below the table are 'Previous', 'Next', and 'Export' buttons. A sidebar on the right contains navigation links: 'Settings', 'Name List', 'Access cards', 'Event log', and 'About', along with a power icon.

Event type	Address / Code	Time	Date
llamando a	01001	17:00:45	01/01/2000
llamando a	01056	00:39:49	01/01/2000

Go to the previous screen.

Export log events .CSV file.

Go to the next screen.

9.5. About

In the “About” section appear detailed the door panel settings parameters as the block to which the panel belongs, the number of door panel, its IP address, subnet mask, gateway, DNS, and MAC address. The hardware and firmware versions also appear detailed, and is also possible to modify the password to access to the web client and system settings of the panel.

Reset the door panel.

Update the firmware version of the door panel.

10. REMOTE ACCESS TO THE 6502/G2+ DOOR PANEL WEB CLIENT

It is possible to remotely access to the web client of the panel, so it is not necessary to directly connect the laptop to the RJ-45 port of the door panel.

To do so, you must give the right network parameters to the door panel in order to allow it to access the internet. You will know that the door panel is connected with the server when the cloud icon appears in the screen.



Enter the URL “sixty5.golmar.cloud” in the search bar of your web browser and enter the UID of the door panel in the “Cloud identifier” field and the settings password (2718 by default) in the “Device password” field to remotely access to the door panel web client.



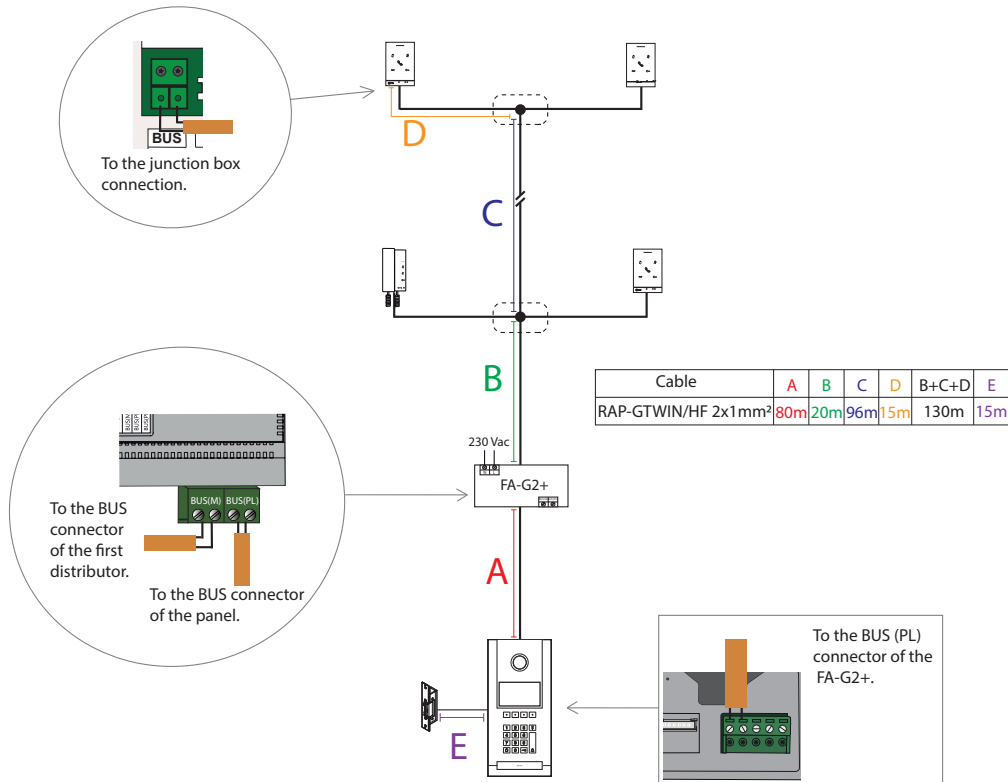
This manual refers only to the following models:

12226502A 6502/G2+	12226502B1 6502/G2+/125KHZ BLACK
12226502A1 6502/G2+/125KHZ	12226502X 6502/G2+ INOX
12226502B 6502/G2+ BLACK	12226502X1 6502/G2+/125KHZ INOX

11. INSTALLATION DIAGRAMS

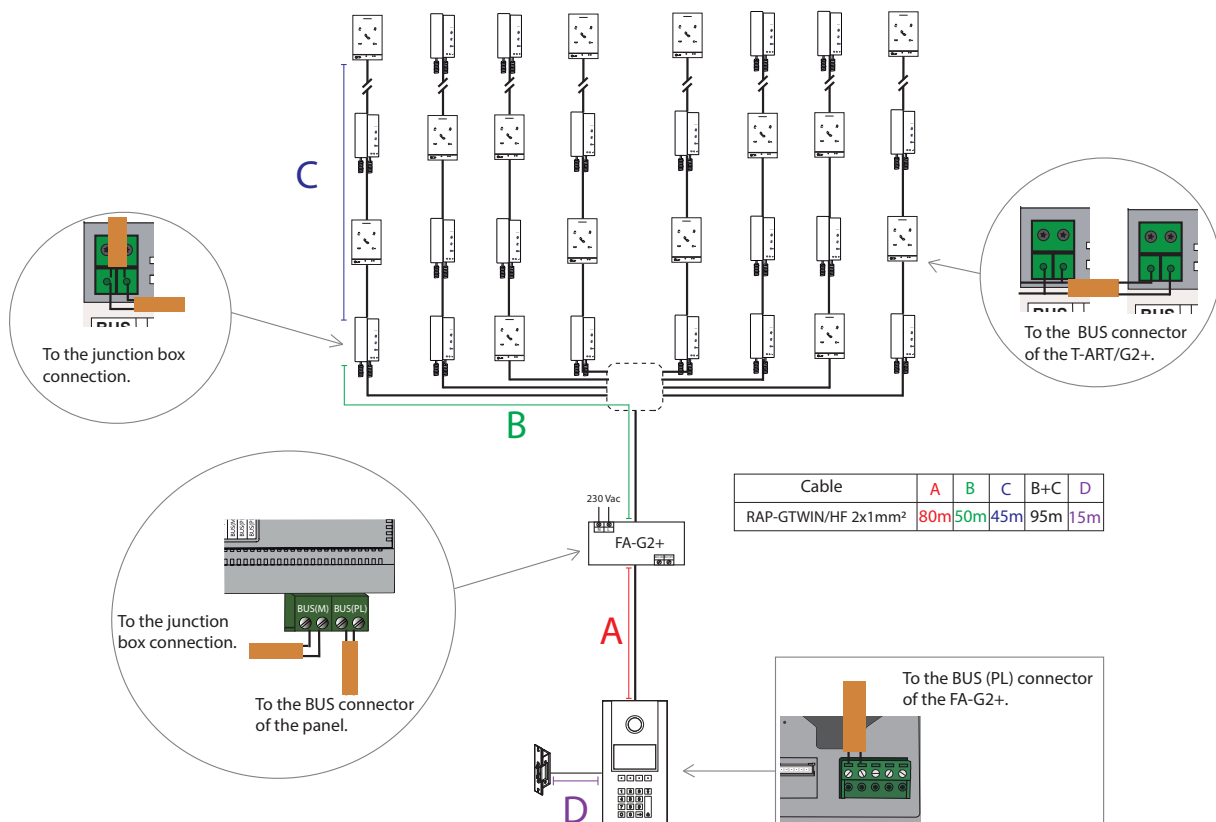
11.1. Distributed audio installation

Up to 128 audio indoor units, all with the DIP 10 in OFF position.



11.2. Daisy-chain audio installation

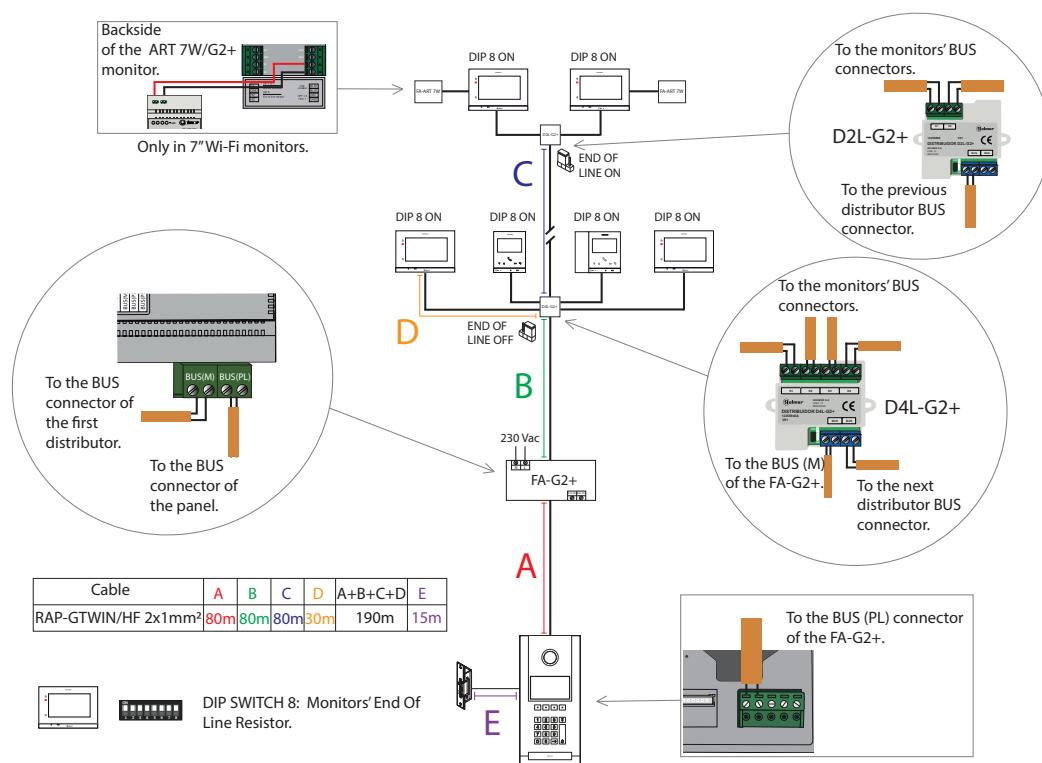
IN-OUT installation with 8 columns without distributors, maximum 16 audio units per column and 128 audio units in the installation. All the indoor units must have the DIP 10 in the OFF position. Make junction box connections.



11.3. Distributed video installation

Up to 32 monitors in the installation.

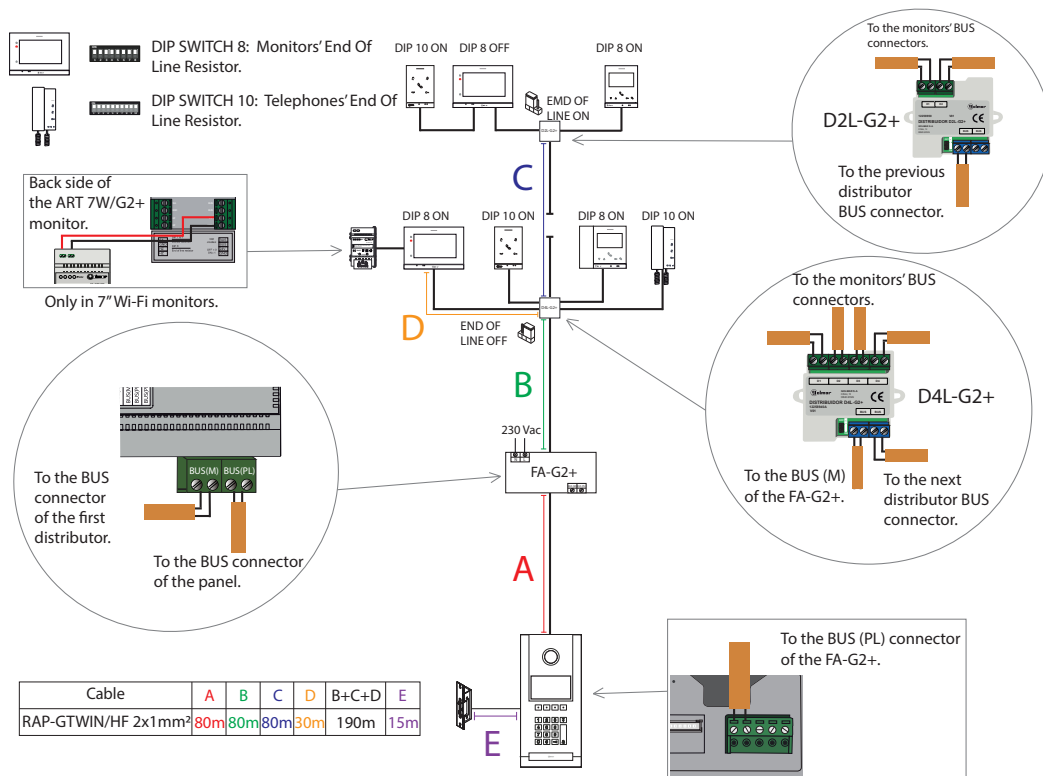
All the indoor units must have the DIP 8 in ON position. Set the end of line resistor only in the last distributor.



11.4. Distributed mixed installation

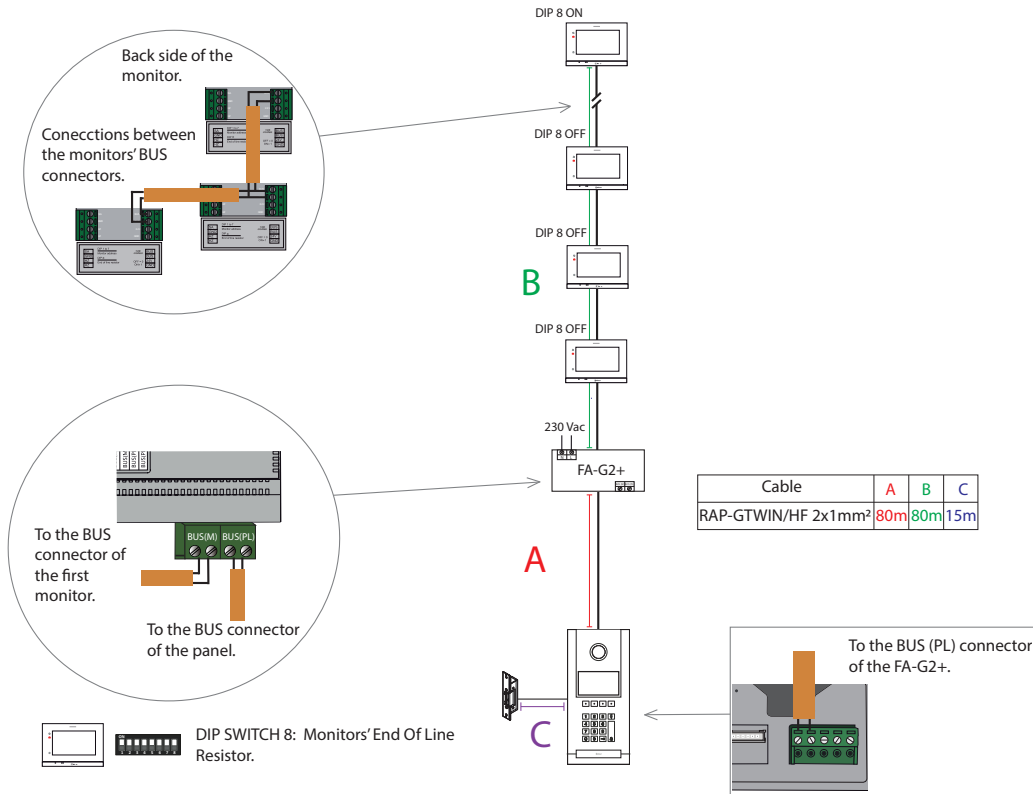
Up to 32 indoor units in the installation.

Set the end of line resistor only in the last distributor.



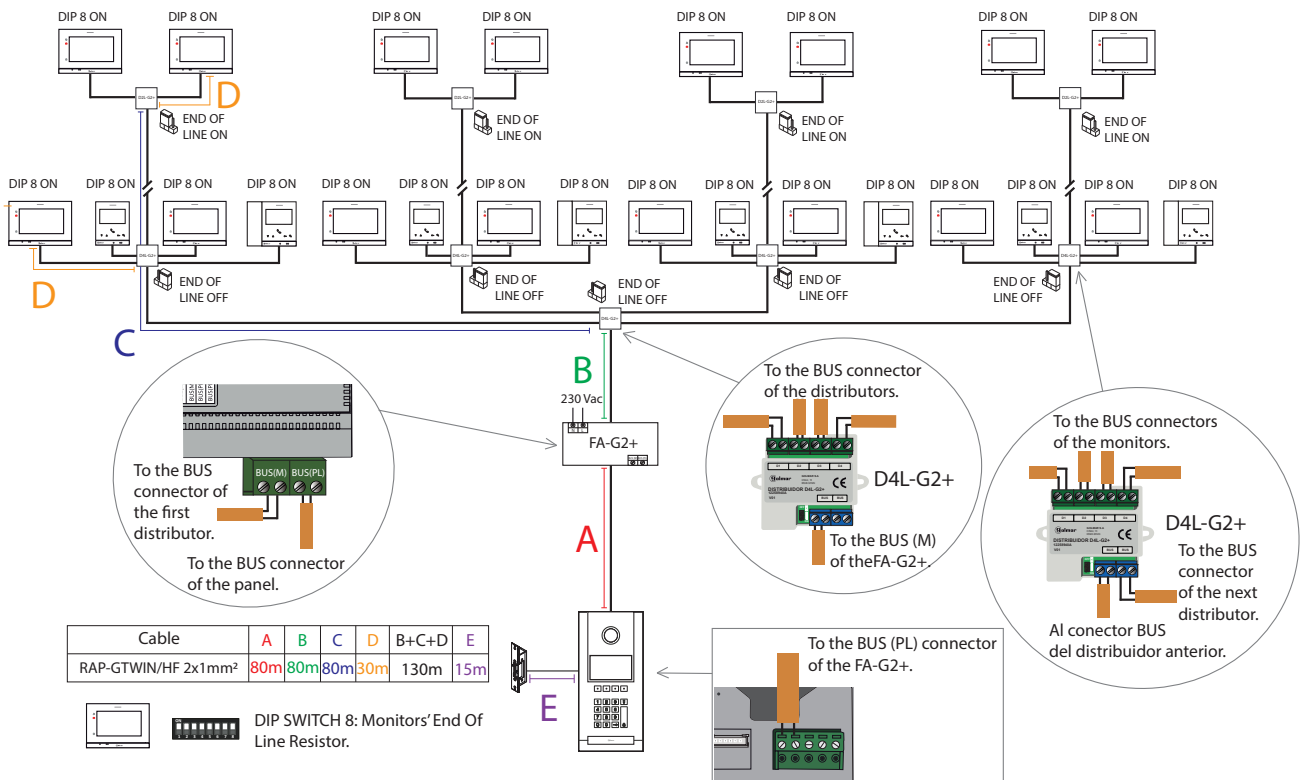
11.5. Daisy-chain video installation without distributors

Up to 12 monitors in IN-OUT mode without distributors for each installation. Set the DIP 8 to ON position only in the last monitor, the rest in OFF position.



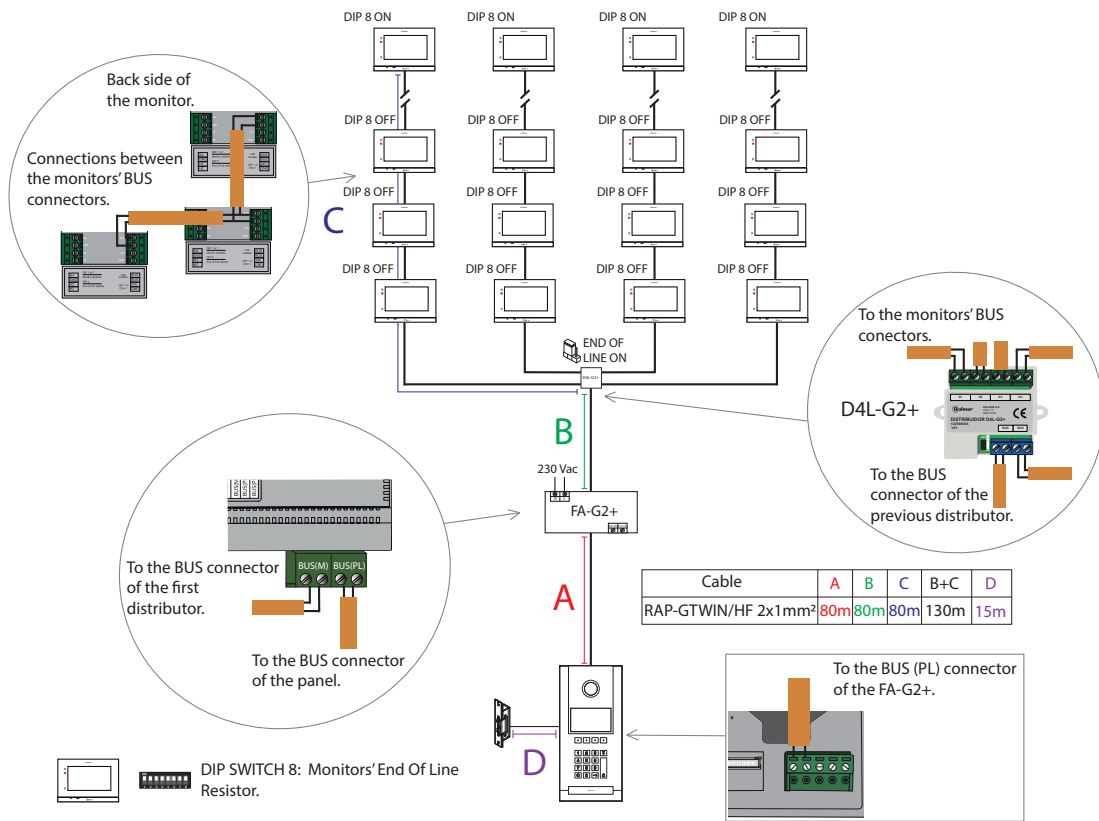
11.6. Video installation in risers with distributors

Up to 32 monitors in the installation. All the indoor units must have the DIP 8 in ON position. Set the end of line only in the last distributor. Is possible to do 2 risers by switching the D4L-G2+ distributor by a D2L-G2+ distributor in the lowest level.



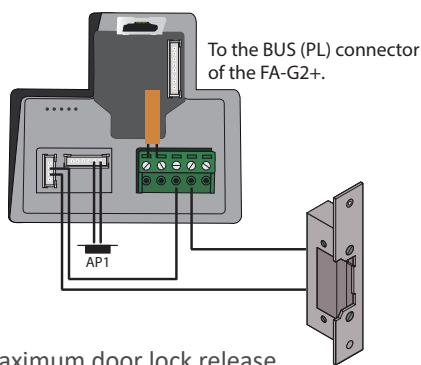
11.7. Video installation in risers with monitors in disy-chain connection mode

Up to a maximum of 8 monitors in IN-OUT connection mode for each column and 32 monitors for each installation.



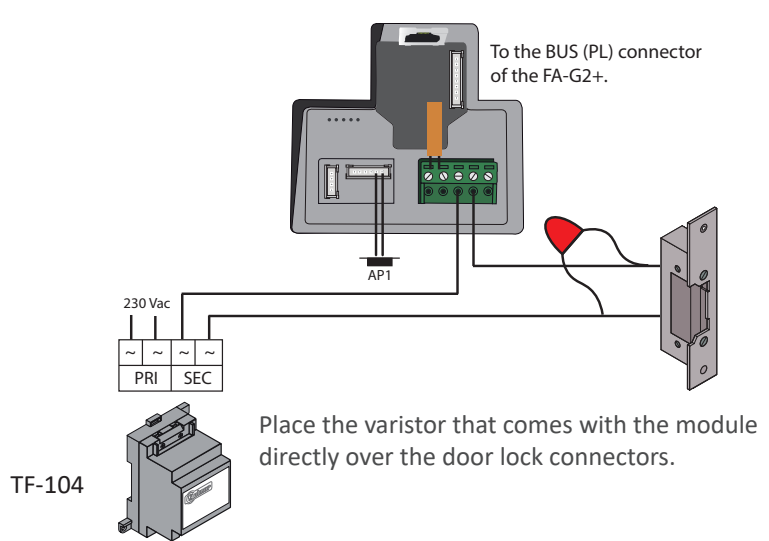
11.8. Single lock release connection

Direct current lock release.



Maximum door lock release
12 Vcc/270mA.

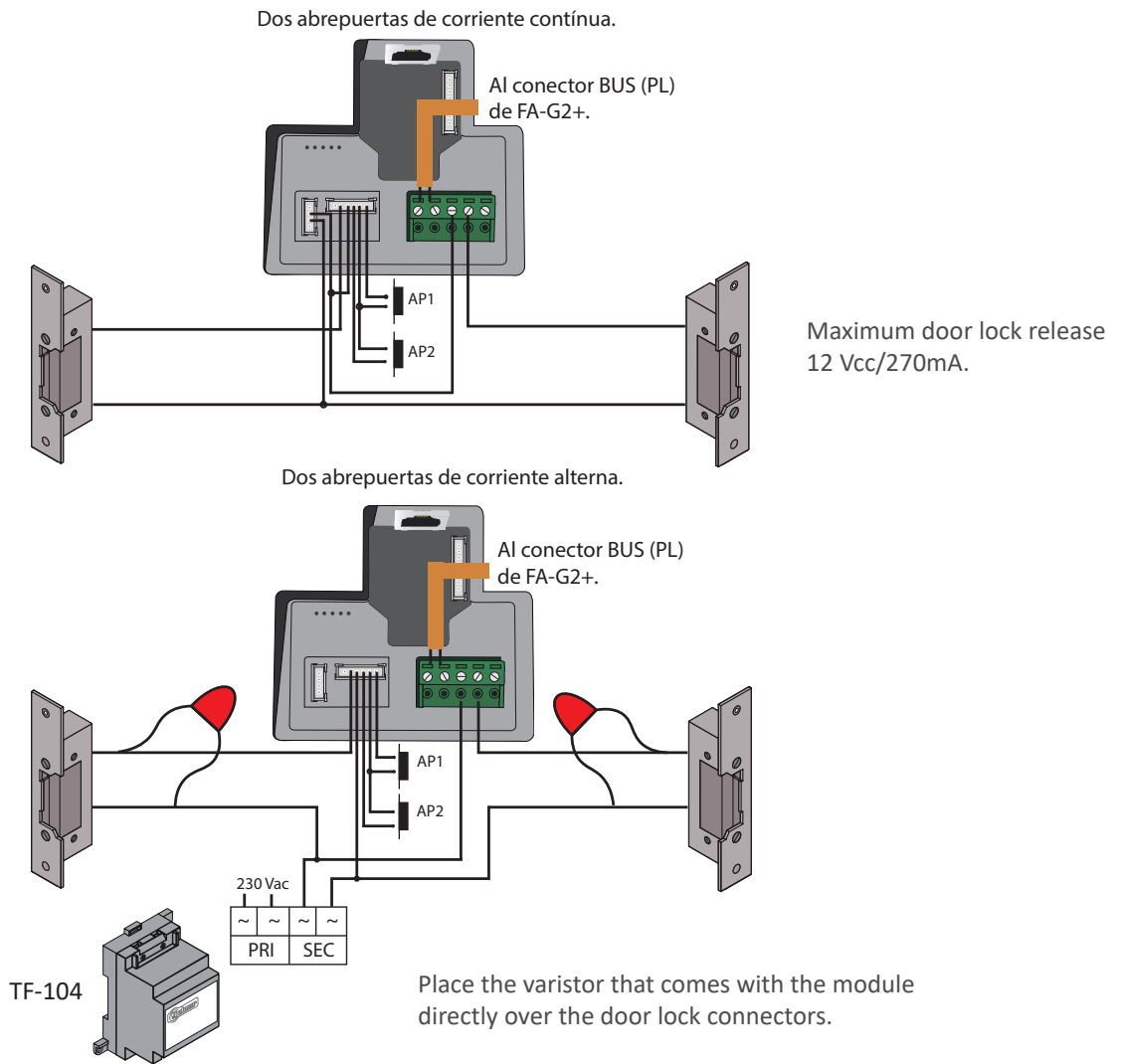
Altern current lock release.



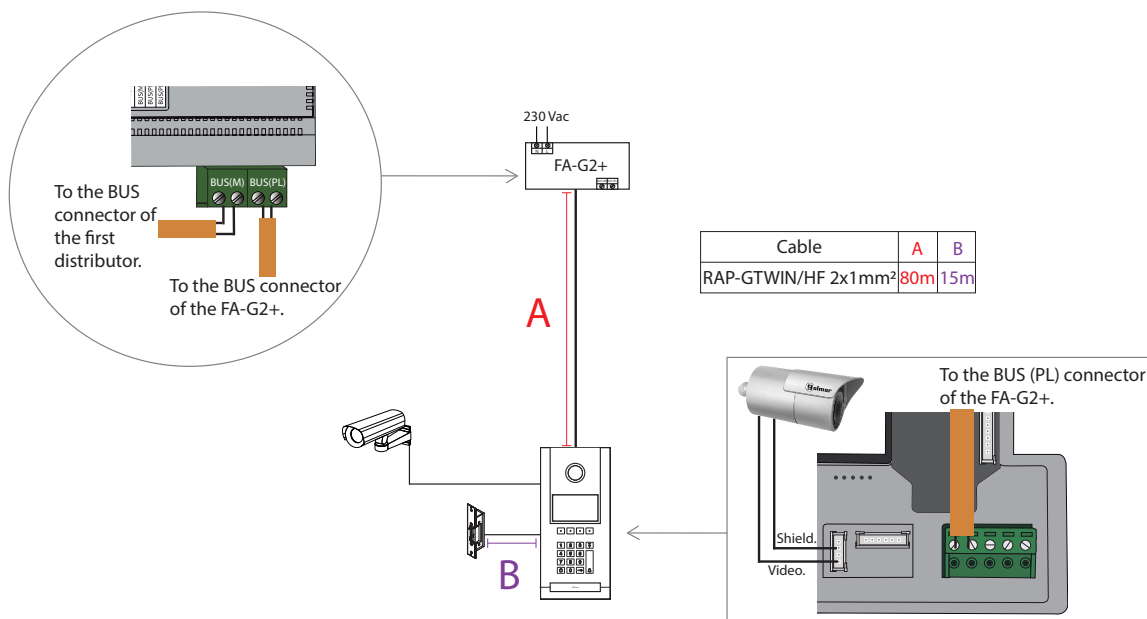
TF-104

Place the varistor that comes with the module directly over the door lock connectors.

11.9. Double lock release connection



11.10. Additional analog CCTV camera connection

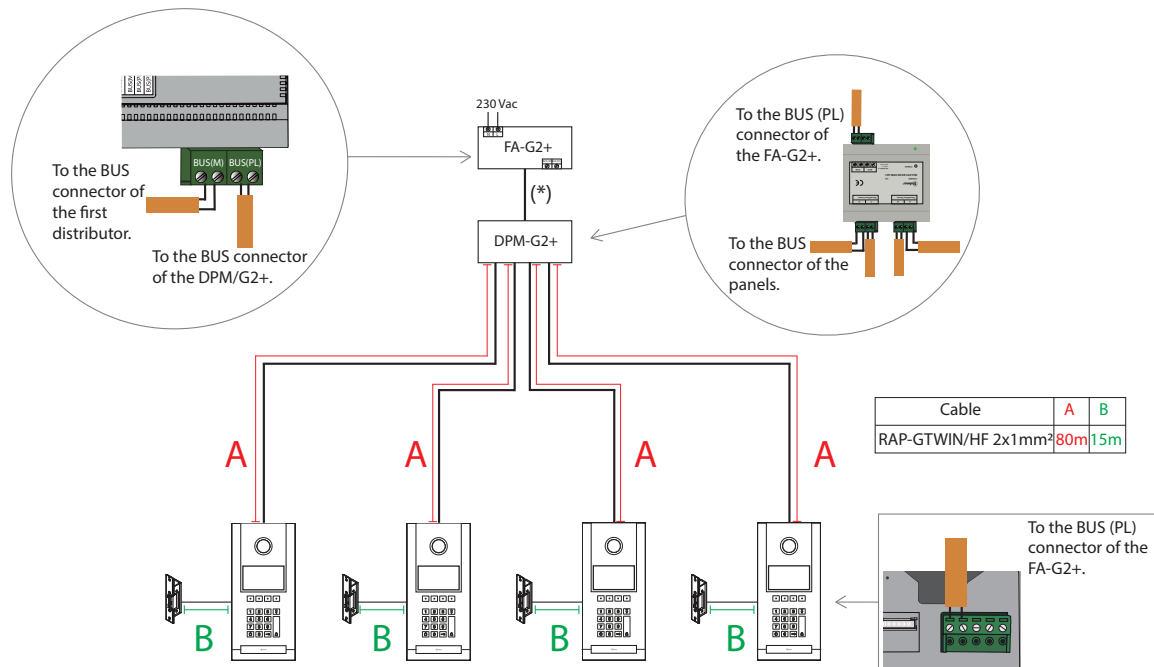


11.11. 4 door panels connection

(*) Maximum distance 1m.

In installations with 1 or 2 door panels with direct current locks release, maximum 2 "AP" external opening pushbuttons. One in each of the door panels.

In installations with more than 2 door panels with direct locks release, maximum 1 "AP" external opening pushbuttons, installed in only one of the door panels of the installation.





C/ Silici 13. Poligon Industrial Famadas
08940 – Cornellà del Llobregat – Spain
golmar@golmar.es
Telf: +34 934 800 696
www.golmar.es



Golmar reserves the right to make any changes without prior notice.