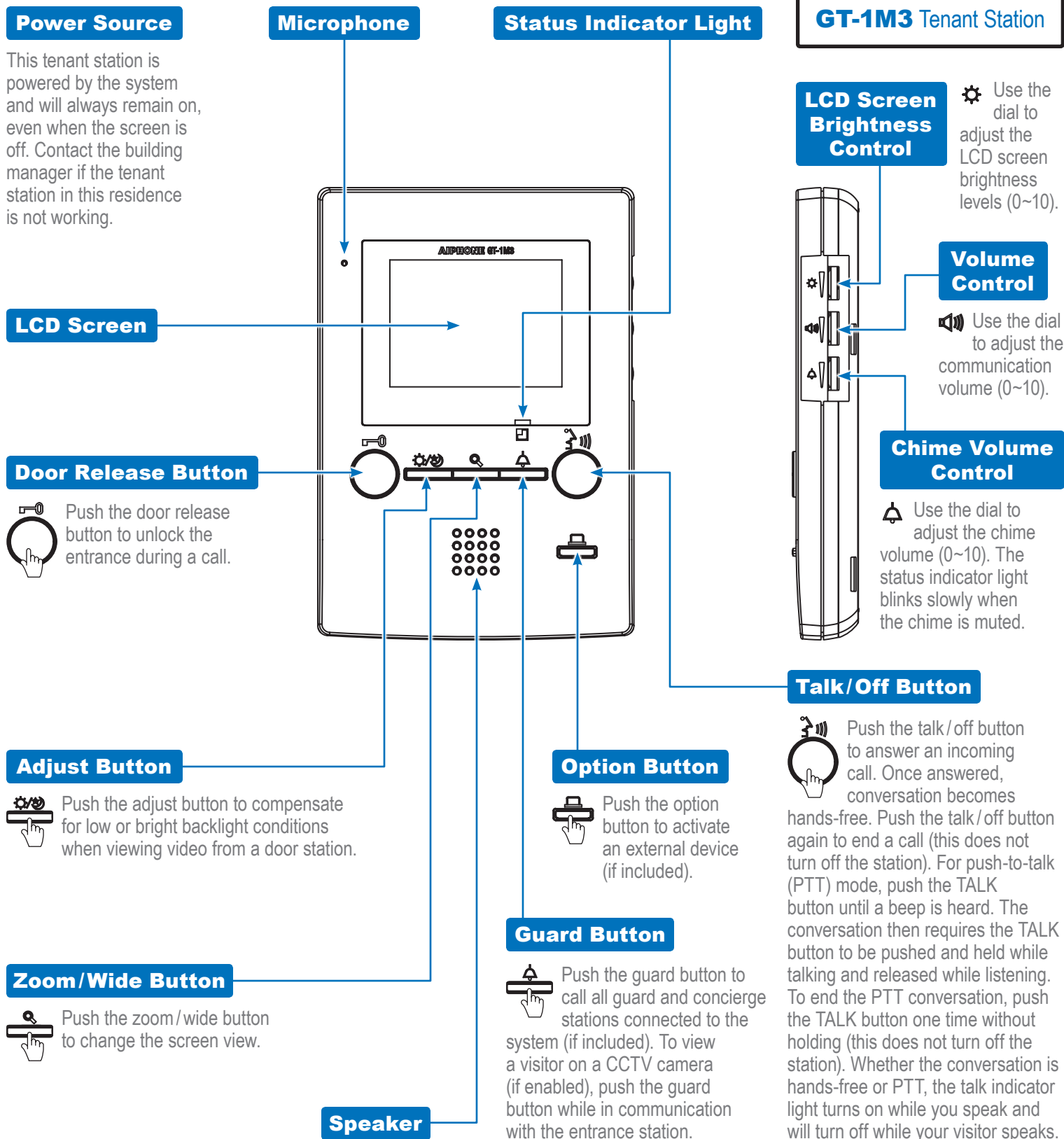


# This operation guide describes the basic functions of your GT Series Tenant Station

For a complete operation manual (3.71 MB), scan QR code or use link to download it from the manufacturer's website: [www.aiphone.com/gt-1m3\\_op-man](http://www.aiphone.com/gt-1m3_op-man)



## Power Source


This tenant station is powered by the system and will always remain on, even when the screen is off. Contact the building manager if the tenant station in this residence is not working.

## Microphone


## Status Indicator Light

## LCD Screen


## Door Release Button

 Push the door release button to unlock the entrance during a call.

## Adjust Button


 Push the adjust button to compensate for low or bright backlight conditions when viewing video from a door station.

## Zoom/Wide Button


 Push the zoom/wide button to change the screen view.

## Speaker


## Option Button

 Push the option button to activate an external device (if included).


## Guard Button

 Push the guard button to call all guard and concierge stations connected to the system (if included). To view a visitor on a CCTV camera (if enabled), push the guard button while in communication with the entrance station.


## LCD Screen Brightness Control

 Use the dial to adjust the LCD screen brightness levels (0~10).


## Volume Control

 Use the dial to adjust the communication volume (0~10).

## Chime Volume Control

 Use the dial to adjust the chime volume (0~10). The status indicator light blinks slowly when the chime is muted.

## Talk/Off Button

 Push the talk/off button to answer an incoming call. Once answered, conversation becomes hands-free. Push the talk/off button again to end a call (this does not turn off the station). For push-to-talk (PTT) mode, push the TALK button until a beep is heard. The conversation then requires the TALK button to be pushed and held while talking and released while listening. To end the PTT conversation, push the TALK button one time without holding (this does not turn off the station). Whether the conversation is hands-free or PTT, the talk indicator light turns on while you speak and will turn off while your visitor speaks.