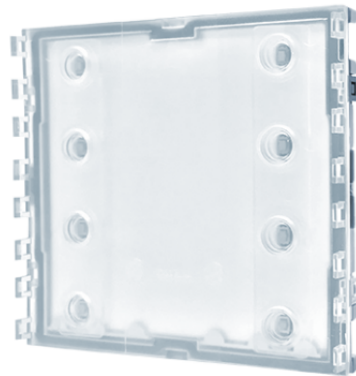


**UT9201****MODULE FOR UT9213, UT9214 BUTTONS, ULTRA**

Module for large call buttons for Ultra entrance panel, compatible with all systems. Designed for 1 large single call button or for 2 double-height buttons, made using professional-grade plastic given an anti-yellowing and anti-dulling treatment. For completion with 1 large single call button art. UT9213 (1 call), 2 double-height buttons art. UT9214 (2 calls) or with caps art. UT9222, UT9223, UT9222M or UT9223M. Automatic nameplate backlight switch-off during daytime hours via the twilight sensor for the paired audio or audio/video module. White nameplate lighting. Dimensions (L x H x D): 100 x 90 x 35 mm.

**AWARDS**DESIGN  
MILANO



**UT9201**

**MODULE FOR UT9213, UT9214 BUTTONS, ULTRA**

**GENERAL DATA**

Type	Modular
Height (mm)	90
Width (mm)	100
Depth (mm)	35
Product color	Transparent
Flush-mounted	Yes, with a dedicated accessory
Wall-mounted	Yes, with a dedicated accessory

**COMPATIBLE SYSTEMS**

Audio/video Simplebus 2 with power supply art. 4888C	Yes
Audio/video Simplebus 2 with power supply art. 1210/1210A	Yes
Audio Simplebus 2 with power supply art. 1210/1210A	Yes
Audio Simplebus 1	Yes
ViP	Yes

**ELECTRICAL CHARACTERISTICS**

Type of power supply	Power supply from video door entry bus
Supply voltage	33VDC
Absorption in stand-by (W)	0.4
Maximum absorption (W)	0.4

**HARDWARE FEATURES**

Call type	Push-buttons
Type of buttons	Mechanical
Number of push-buttons (n°)	8
Backlight colour	White, Off

**SETTINGS**



**UT9201**

**MODULE FOR UT9213, UT9214 BUTTONS, ULTRA**

Backlight brightness	Yes
----------------------	-----

**PROGRAMMING MODE**

ViP Manager software	Yes
----------------------	-----

**ENVIRONMENTAL AND COMPLIANCE FEATURES**

IP protection rating	IP65
Vandal Resistant rating (IK code)	IK08
Operating temperature (°C)	-25 ÷ 55
Operating humidity (RH max) (%)	25 ÷ 95
Environmental class	IV
Certifications	RoHS II - 2011/65/UE (EN IEC 63000:2018), EMC 2014/30/UE (EN 61000-6-1:2007 , EN 61000-6-3:2007+A1:2011)



**UT9201**

## **MODULE FOR UT9213, UT9214 BUTTONS, ULTRA**

### **ACCESSORIES**

#### **UT9223M TRIPLE-HEIGHT ULTRA FULL METAL CAP**



"Full Metal version triple-height cap for Ultra entrance panel. Made with aluminium coating to increase resistance to impact and polymethyl methacrylate treated to increase resistance to UV rays while preventing yellowing and dulling."

#### **UT9223 TRIPLE-HEIGHT ULTRA PLASTIC CAP**



"Triple-height cap for Ultra entrance panel. Made using polymethyl methacrylate given a treatment for resistance to UV rays while preventing yellowing and dulling."

#### **UT9222M DOUBLE-HEIGHT ULTRA FULL METAL CAP**



"Full Metal version double-height cap for Ultra entrance panel. Made with aluminium coating to increase resistance to impact and polymethyl methacrylate treated to increase resistance to UV rays while preventing yellowing and dulling."

#### **UT9222 DOUBLE-HEIGHT ULTRA PLASTIC CAP**



"Double-height cap for Ultra entrance panel. Made using polymethyl methacrylate given a treatment for resistance to UV rays while preventing yellowing and dulling."

#### **UT9214 DOUBLE-HEIGHT ULTRA BUTTON**



Double-height button for Ultra entrance panel. For use with button module art. UT9201. Made using polymethyl methacrylate given a treatment for resistance to UV rays while preventing yellowing and dulling. Double nameplate (blank and with bell symbol) supplied. Easy nameplate replacement.



**UT9201**

## **MODULE FOR UT9213, UT9214 BUTTONS, ULTRA**

### **ACCESSORIES**



**UT9213    LARGE SINGLE ULTRA BUTTON**

Large single button for Ultra entrance panel. For use with button module art. UT9201. Made using polymethyl methacrylate given a treatment for resistance to UV rays while preventing yellowing and dulling. Double nameplate (blank and with bell symbol) supplied. Easy nameplate replacement.