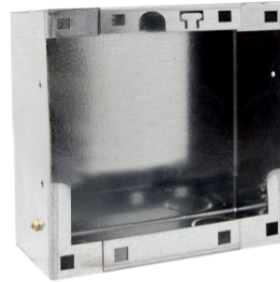




IX9156

FLUSH-MOUNTED BOX ACCESSORY FRONT PANEL. 1 COLUMN



Flush-mounted box for front plate accessory for Switch series entrance panels with 1 column.
Dimensions: 124x110.5x55 mm.



IX9156

FLUSH-MOUNTED BOX ACCESSORY FRONT PANEL. 1 COLUMN

Height (mm)	110.5
Width (mm)	124
Depth (mm)	55

GENERAL DATA

Type of finishing materials	Steel zinc coated
Product color	Steel

COMPATIBILITY

Simplebus 2 audio/video system	Yes
Simplebus 2 audio system	Yes
Simplebus 1 audio system	Yes
Vip system	Yes

MOUNTING/INSTALLATION

Flush-mounted	Yes
---------------	-----