

**IPBCAMA04FCB****BULLET IP CAMERA 4MP 2.8MM, GREY****ADVANCE
SERIE**

Advance series IP bullet camera, 2.8 mm fixed lens, resolution 4MP@30 fps, High frame rate function supported (2MP@60 fps). IR LEDs with a range of 50 metres (Smart IR), ONVIF compatible. The high frame function (60 fps) is only supported by 32/64/128 ch Advance series NVRs. Video analysis functions: Scene change detection, Object abandoned/removed function, heat map, Face detection, Video tamper detection, Line cross detection (distinction between humans / vehicles), Detection of Entry into / Exit from / Intrusion into an area (distinction between humans / vehicles), Human / vehicle counting on a line and in an area, Metadata analysis, No parking, Loitering, Audio fault. WDR 120Db, compression H.265+/H.265/H.264+/H.264/MJPEG, SD slot (max. 256GB). Audio: 1 in. IP67 waterproof die-cast aluminium enclosure, power supply 12 VDC / PoE IEEE802.3af. Compatible with browsers: IE/Google Chrome/Edge/Firefox/Safari. Colour: traffic grey B, RAL 7043. Compatible accessories: JBA-BAB, CMA-BAB, WMA-BAB, PMA-AB, AMA-AB.

AWARDS



IPBCAMA04FCB

BULLET IP CAMERA 4MP 2.8MM, GREY

MAIN FEATURES

Camera sensor	1/3" CMOS Ultra Starlight
Lens optical dimensions (in)	0.11
Horizontal FoV (°)	100
Vertical FoV (°)	53
Diagonal FoV (°)	115.2
Electronic shutter (s)	1/25 ÷ 100000
Sensitivity	0.005 (colour), 0 (B/W, led IR ON)
Signal/noise ratio	>50 (AGC OFF)
IR filter	Mechanical
Video trasmission	Triple streaming
Management software	Comelit CCTV Manager
Video resolution	2592x1520 (4MP)

DORI

Detection (yd)	65.62
Observation (yd)	26.25
Recognition (yd)	13.12
Identification (yd)	6.56

SOFTWARE/FIRMWARE SPECIFICATIONS

Video compression	H.264 / H.264+ / H.265 / H.265+
Audio compression	G711A/U
Frame rate	30/60fps
Bit rate range (Mbit/s)	0.06 ÷ 8
Protocols supported	DDNS, Comelit DNS, DHCP, FTP, HTTP, HTTPS, IPv4, IPv6, NTP, PPPoE, QoS, RTCP, RTP, RTSP, SMTP, UDP, UPnP, SNMP, IEEE 802.1x, RTMP, ONVIF (Profile-S), ONVIF (Profile-G), ONVIF (Profile-M), ONVIF (Profile-T)
Users connected at the same time	10 (live)
Updating firmware using network	Yes



IPBCAMA04FCB

BULLET IP CAMERA 4MP 2.8MM, GREY

SOFTWARE/FIRMWARE SPECIFICATIONS

Network security	Multi-user authorization, HTTPS, AES encryption, RTSP verif.
Remote viewer from browser	Edge, Firefox, Chrome, Safari
Remote control by mobile	APP Comelit CCTV
Latest firmware version	5.1.3.1(52255)(2023-11-08)

FUNCTIONS

Motion detection	Yes
Video analytics	Scene change detection, Face detection, Video tampering detection, Line crossing detection (human / vehicle classification), Region entrance / exit / intrusion detection (human / vehicle classification), Object abandoned / missing detection, Vehicles / people counting, Heat map, metadata-analysis, parking-prohibited, loitering, Audio anomaly
Optimal people detection distance (yd)	10.94
Optimal vehicle detection distance (yd)	16.4
Privacy zones (n°)	4
Back light compensation (BLC)	BLC, HLC
Digital effects	Mirror (Horizontal, Vertical, 180° rotation), ROI zones, Saturation, Brightness, Contrast, Sharpness, Image flip
Wide Dinamic Range (WDR)	WDR (120dB)
Enhanced DNR control	3D-DNR
White balance control	Automatic, Indoor, Manual, Outdoor
Display brightness control	Yes
Image flip	Yes
Automatic gain control (AGC)	Yes
Camera titling	Yes

HARDWARE SPECIFICATIONS

IR LED lighting distance	50m
Vandal Resistant rating (IK code)	IK10 (metal housing)
IP protection rating	IP67



IPBCAMA04FCB

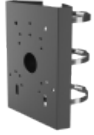
BULLET IP CAMERA 4MP 2.8MM, GREY

HARDWARE SPECIFICATIONS

Audio Inputs/Outputs	1 / 0
LAN output type	Ethernet 10/100 Mbit/s (RJ45)
Support SD card (card not included)	Micro-SD (256GB max)

GENERAL DATA

Supply voltage	12VDC
Max absorption (W)	8.5
PoE power supply	Standard IEEE 802.3af
Type of power supply	PoE, External power supply
Height (inch) (in)	3.15
Width (inch) (in)	8.54
Depth (inch) (in)	3.15
Product weight (oz) (oz)	23.28
Type of finishing materials	Die-cast aluminum
Housing type	Bullet
Product color	Traffic grey B, RAL 7043
Operating temperature (°F)	-22 ÷ 140
Operating humidity (RH max) (%)	25 ÷ 95

**IPBCAMA04FCB****BULLET IP CAMERA 4MP 2.8MM, GREY****ACCESSORIES****PMA-AB POLE-MOUNT BACKPLATE, ADVANCE NEXT, GREY**

Accessory for pole mounting of Next and Advance cameras, traffic grey B, RAL 7043. For compatibility with models, please refer to the diagram in the downloads section. Pole diameter from 80 to 140 mm

**JBA-BAB IP66 CONNECTION BOX, ADVANCE NEXT GREY**

Junction box for securing Next and Advance cameras, traffic grey B, RAL 7043. For compatibility with models, please refer to the diagram in the downloads section.

**CMA-BAB CEILING-MOUNT BACKPLATE, ADVANCE NEXT, GREY**

Accessory for ceiling mounting of Next and Advance cameras, traffic grey B, RAL 7043. For compatibility with models, please refer to the diagram in the downloads section.

**AMA-AB CORNER MOUNTING BACKPLATE, ADVANCE NEXT, GREY**

Accessory for corner mounting of Next and Advance cameras, traffic grey B, RAL 7043. For compatibility with models, please refer to the diagram in the downloads section.