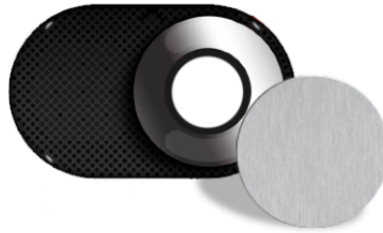




**1250U**

## **AUDIO OR AUDIO/VIDEO UNIT ADAPTER**



Adapter supplied with the Switch entrance panel, for use when securing the audio or audio/video modules - not supplied - depending on the type of wiring applied (Simplebus digital 2-wire or ViP).



**1250U**

**AUDIO OR AUDIO/VIDEO UNIT ADAPTER**

**MAIN FEATURES**

Height (mm)	77.98
Width (mm)	119.89
Depth (mm)	29.97

**GENERAL DATA**

Type of finishing materials	Polycarbonate
Product color	Black RAL9005

**COMPATIBILITY**

Simplebus 2 audio/video system	Yes
Building Kit audio/video system	Yes
Simplebus 2 audio system	Yes
Simplebus 1 audio system	Yes
Vip system	Yes