

4 + n

FERMAX

KIT AUDIO 1-24 LÍNEAS CITYLINE 4+n
CITYLINE 4+n 1 - 24 WAYS AUDIO KIT
KIT AUDIO 1 - 24 LIGNES CITYLINE 4+n
AUDIO-KIT 1 - 24 WE CITYLINE 4+n
KIT DE ÁUDIO 1 - 24 LINHAS CITYLINE 4+n

GUÍA INICIO RÁPIDA
QUICK START GUIDE
GUIDE DE MISE EN MARCHÉ RAPIDE
SCHNELLSTARTANLEITUNG
GUIA DE INICIAÇÃO RÁPIDA

es.

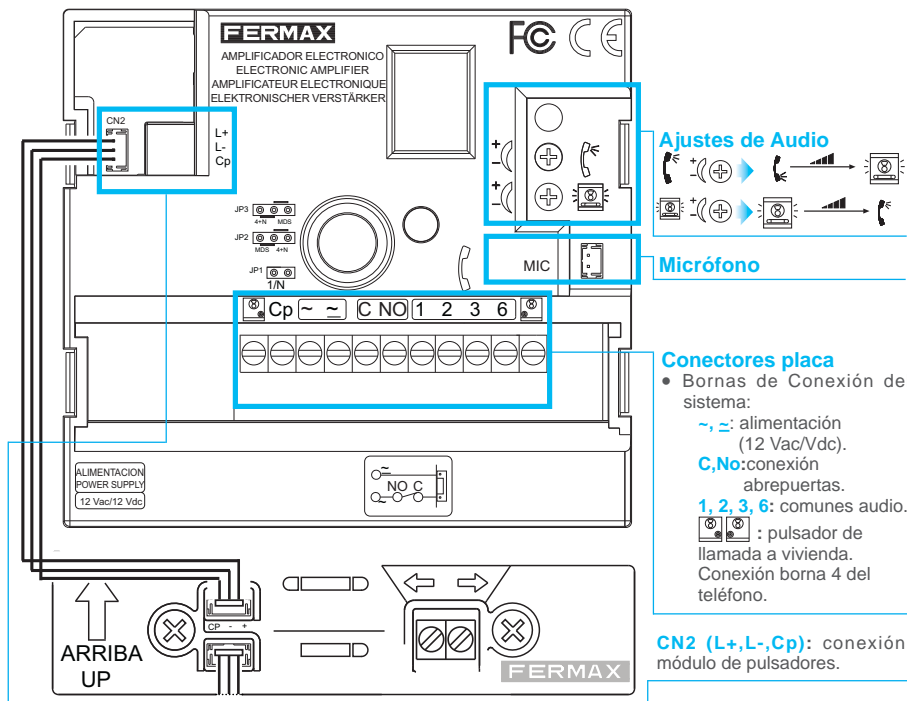
en.

fr.

de.

pt.

CONECTORES PLACA



CARACTERÍSTICAS TÉCNICAS

PLACA

Alimentación	12 Vac/12 Vdc
Consumo	
en reposo	185 mA
audio activo	480 mA
iluminación por módulo de pulsadores	10 mA
Temperatura de funcionamiento	[-10 , +60 °C] / [14 , +140 °F]
Potencia audio sentido vivienda-calle	1W
Potencia audio sentido calle-vivienda	0,15 W
Volumen regulable en ambos sentidos	

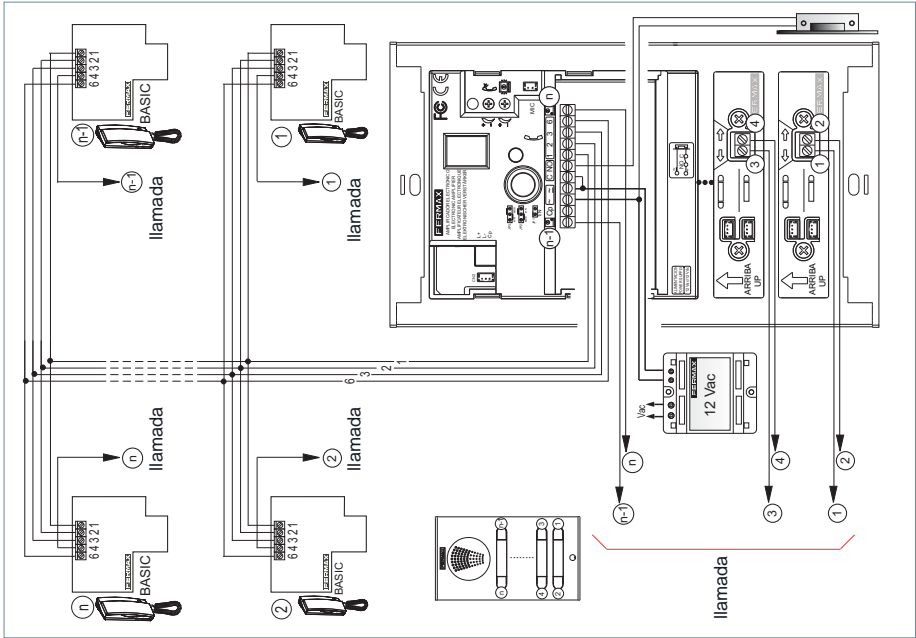
TELEFONO

Temperatura de funcionamiento	[0, +40°C] / [32, +104°F]
Llamada Electrónica	8 , 12 Vpp
Altavoz	1.75" 16 W
Micrófono: Electret - Resist. dinámica 50	

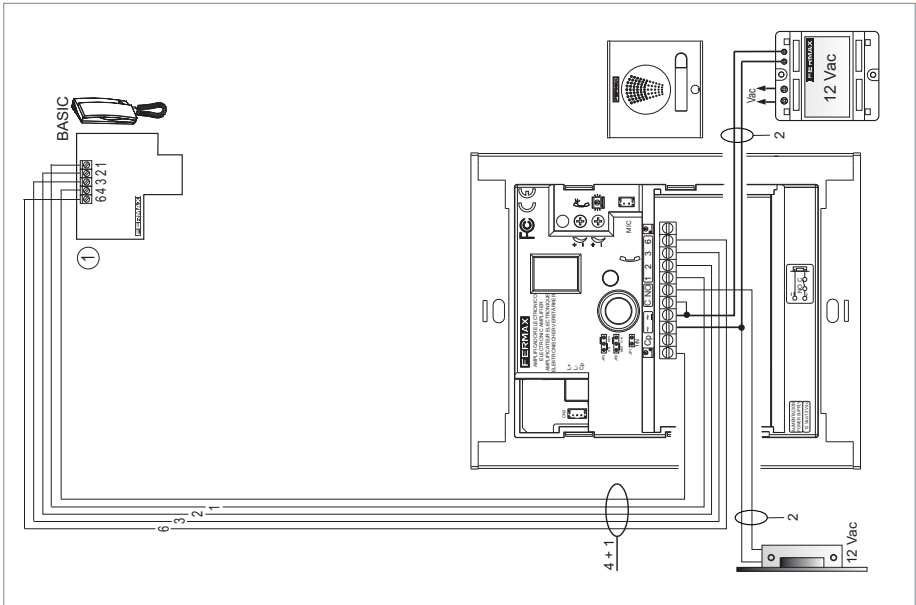


ESQUEMA DE CABLEADO

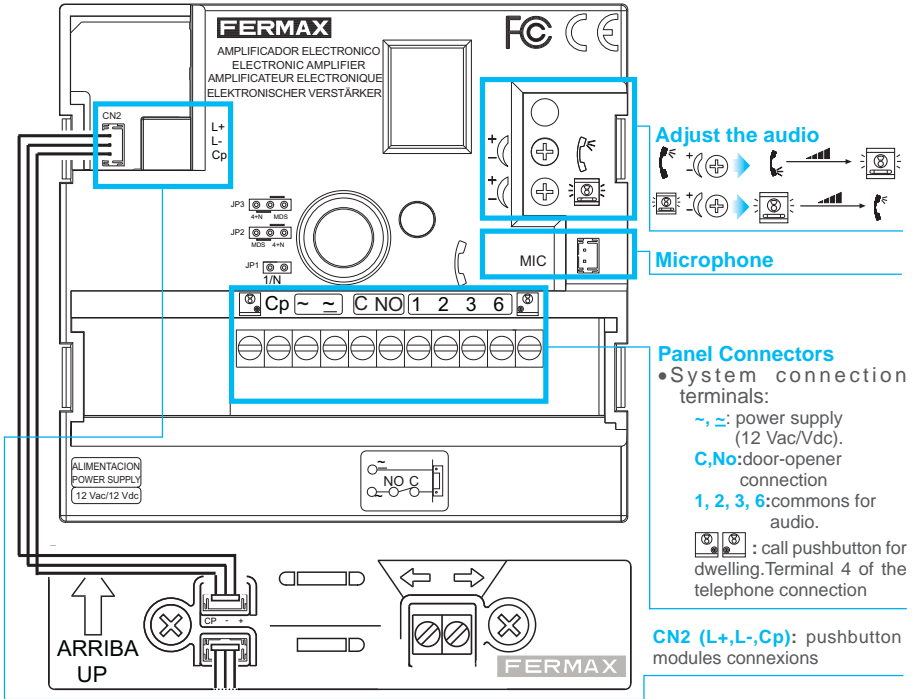
ESQUEMAS DE CABLEADO KIT 2 L - 24L



ESQUEMAS DE CABLEADO KIT 1 L



PANEL CONECTORS



TECHNICAL FEATURES

PANEL

Power Supply	12 Vac/12 Vdc
Consumption	
in standby	185 mA
audio active	480 mA
illumination by pushbutton modules	10 mA
Operating Temperature	[-10 , +60 °C] / [14 , +140 °F]
Audio power from the apartment to the panel	2W
Audio power from the panel to the apartment	0,15 W
Adjustable volume both ways	

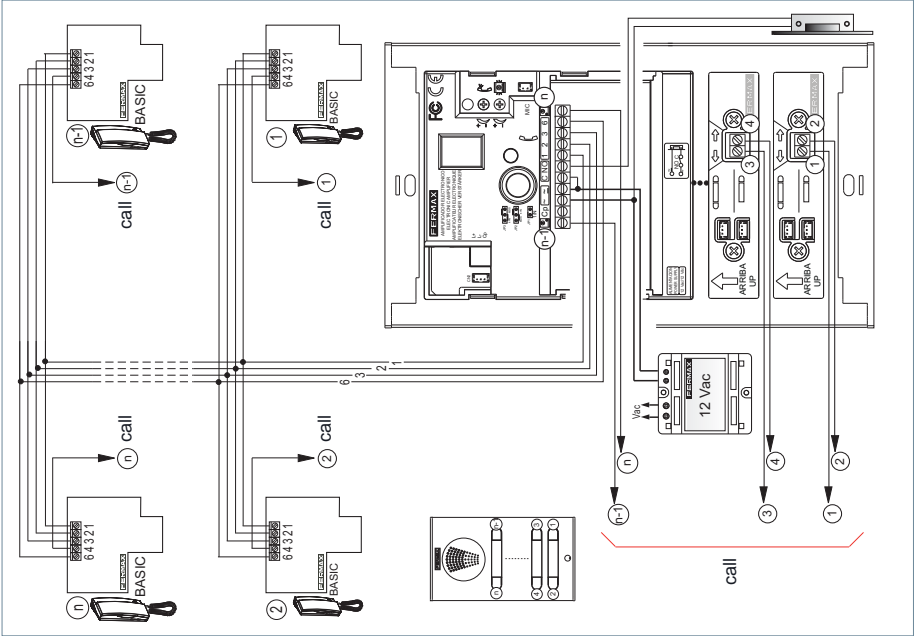
TELEPHONE

Operating Temperature	[0, +40°C] / [32, +104°F]
Electronic call	8 , 12 Vpp
Speaker	1.75" 16 W
Microphone: Electret - Dinamic Resist. 50	

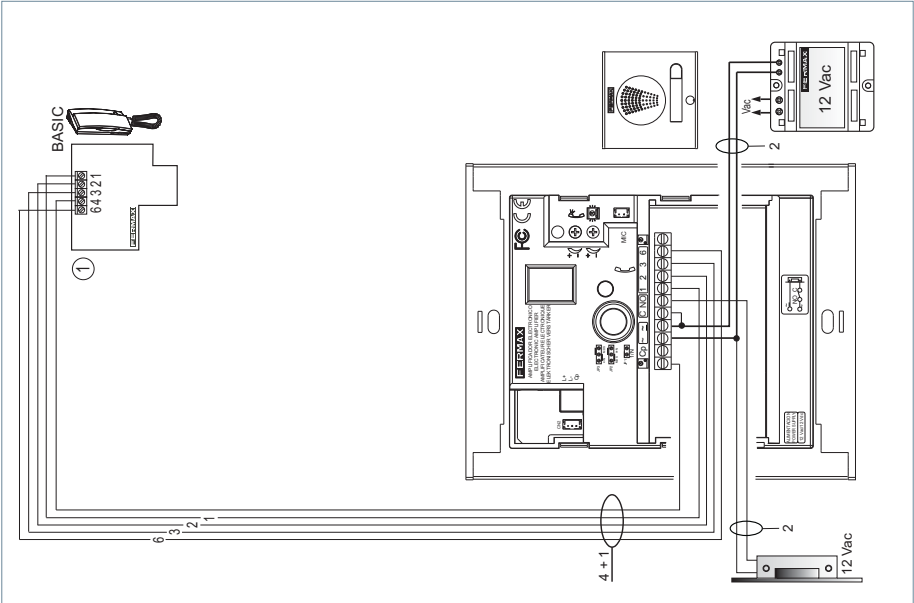


WIRING DIAGRAM

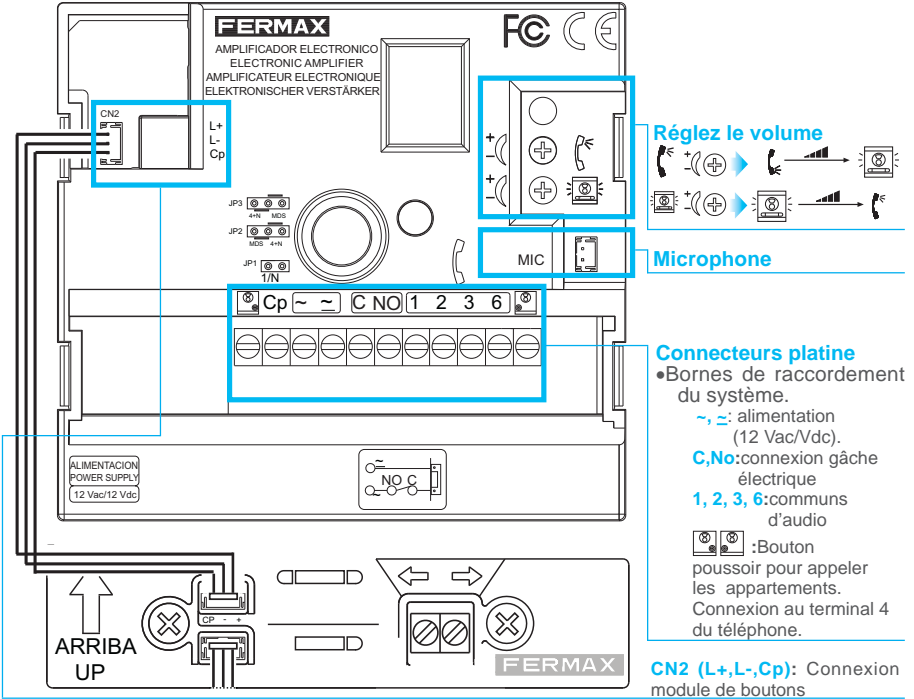
WIRING DIAGRAM KIT 2 L - 24L



WIRING DIAGRAM KIT 1 L



CONNECTEURS PLATINE



CARACTERISTIQUES TECHNIQUES

PLATINE

Alimentation	12 Vac/12 Vdc
Consommation	
en veille	185 mA
avec son	480 mA
Illumination de le module de boutons	10 mA
Température de fonctionnement	[-10 , +60 °C] / [14 , +140 °F]
Puissance du son sens poste-platine	2W
Puissance du son sens platine-poste	0,15 W
Volume réglable dans les deux sens	

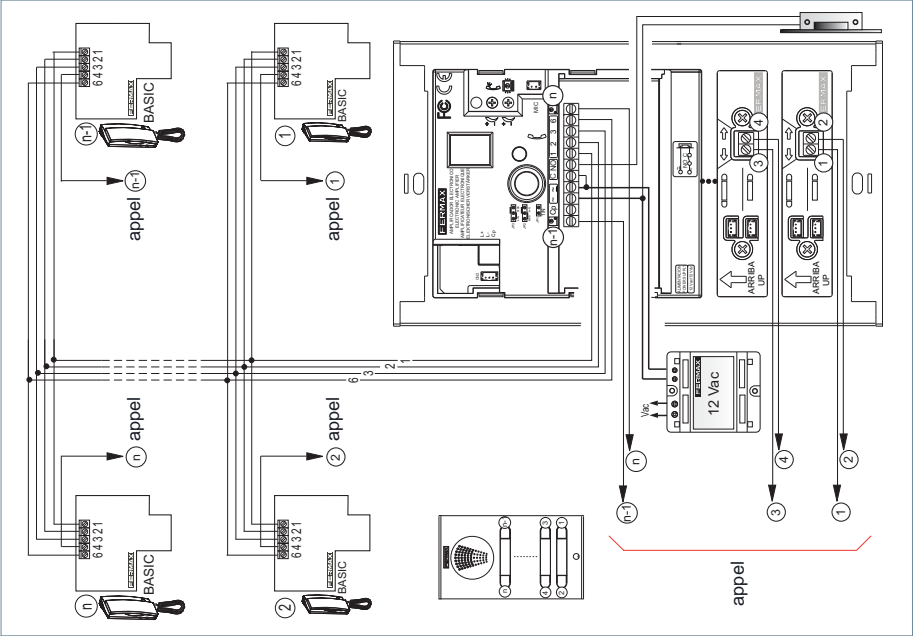
TELEPHONE

Température de fonctionnement	[0, +40°C] / [32, +104°F]
Appel électronique	8 , 12 Vpp
Haut-parleur	1.75" 16 W
Microphone: Electret - Résistance dynamique 50	

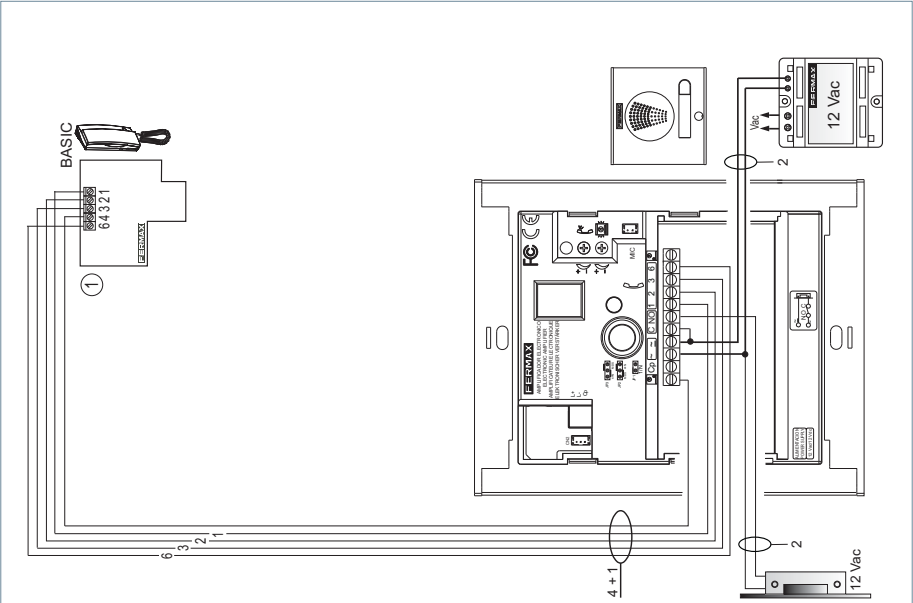


SCHEMA DE CABLAGE

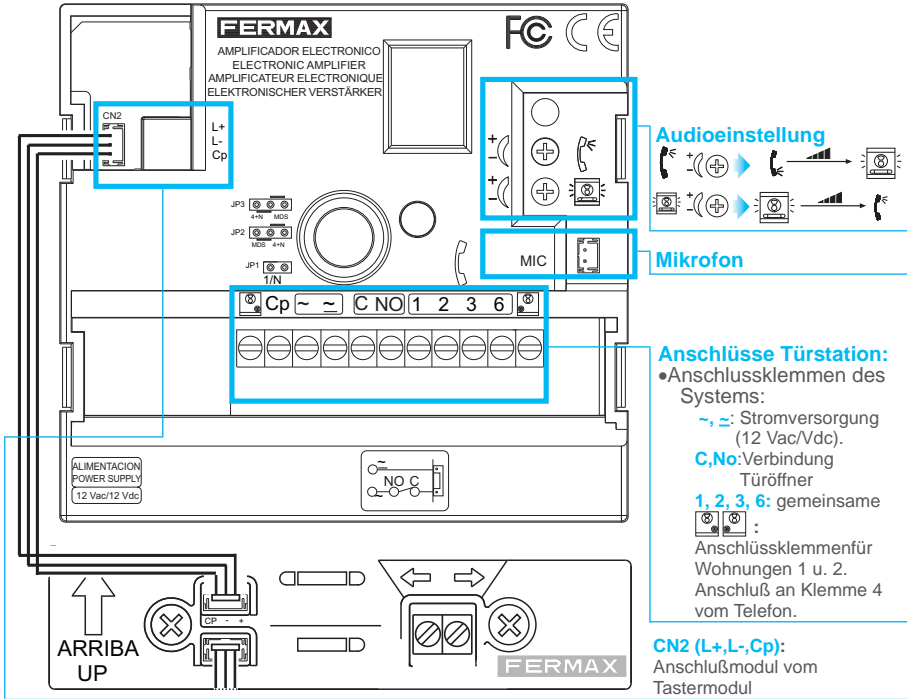
SCHEMA DE CABLAGE KIT 2 L - 24L



SCHEMA DE CABLAGE KIT 1 L



ANSCHLÜSSE TÜRSTATION



TECHNISCHE EIGENSCHAFTEN

TÜRSTATION

Stromversorgung	12 Vac/12 Vdc
Stromverbrauch	
Im Bereitschaftsmodus	185 mA
Betriebszustand Audio	480 mA
Beleuchtung vom Tastermodul	10 mA
Betriebstemperatur	[-10 , +60 °C] / [14 , +140 °F]
Audio-Leistung in Richtung Türstation	2W
Audio-Leistung in Richtung Telefon	0,15 W
Regulierbare Lautstärke in beiden Richtungen	

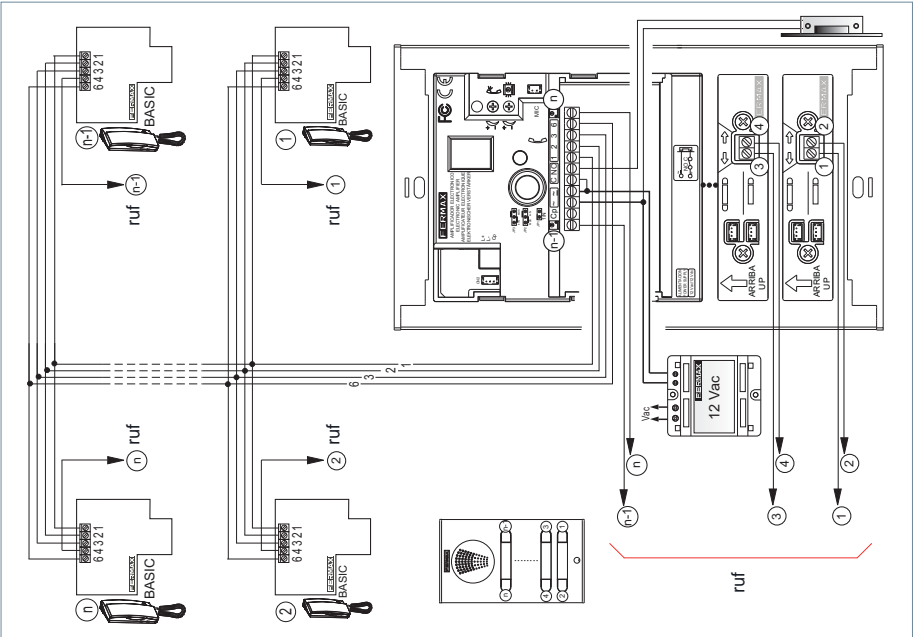
TELEFONS

Betriebstemperatur	[0, +40°C] / [32, +104°F]
Elektronischer Ruf	8 , 12 Vpp
Lautsprecher	1.75" 16 W
Mikrofon: Electret - Dynamischer Widerstand 50	

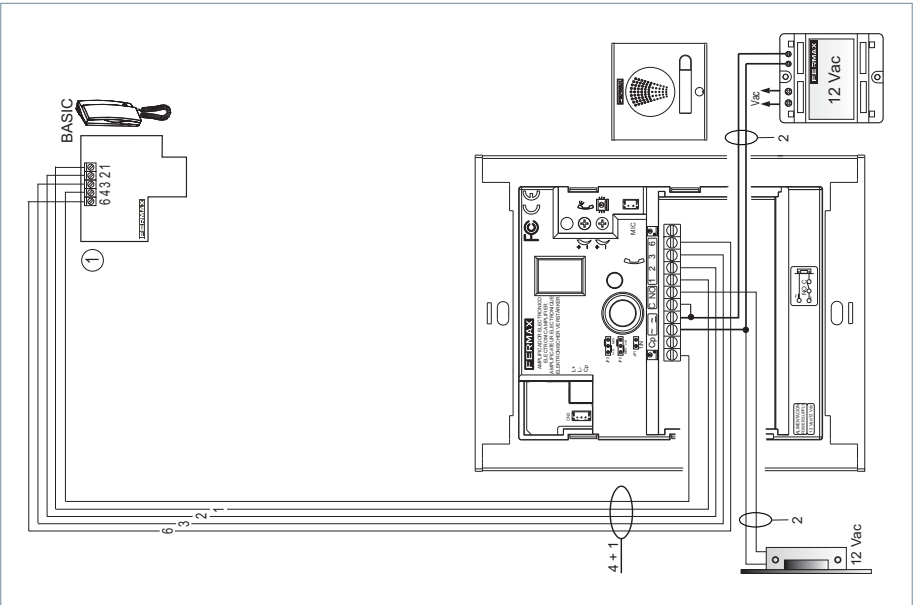


VERKABELUNGSSCHEMA

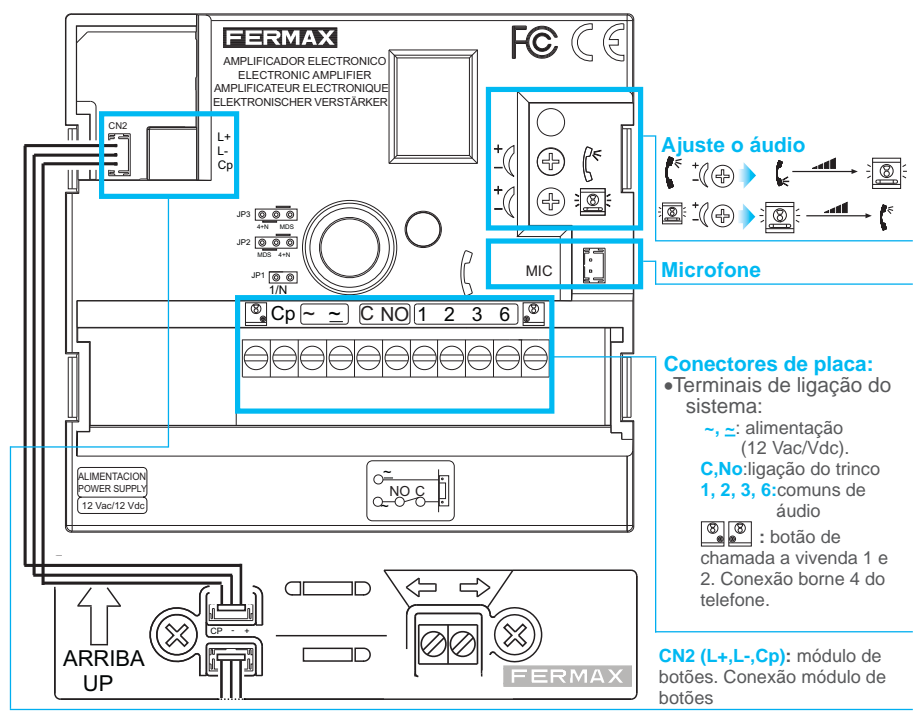
VERKABELUNGSSCHEMA KIT 2 L - 24L



VERKABELUNGSSCHEMA KIT 1 L



CONECTORES DA PLACA



CARACTERÍSTICAS TÉCNICAS

TÜRSTATION

Alimentação	12 Vac/12 Vdc
Consumo	
em repouso	185 mA
áudio activo	480 mA
Iluminação por módulo de módulo de botões	10 mA
Temperatura de funcionamento	[-10 , +60 °C] / [14 , +140 °F]
Potência áudio sentido rua	2W
Potência áudio sentido telefone	0,15 W
Volume regulável em ambos sentidos	

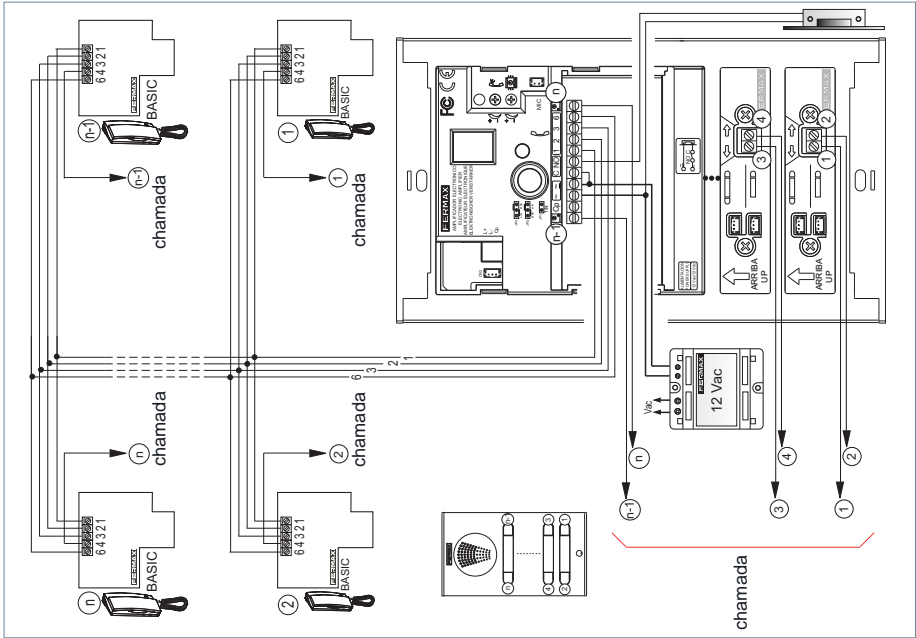
TELEFONS

Temperatura de funcionamento	[0, +40°C] / [32, +104°F]
Chamada Eletrónica	8 , 12 Vpp
Altifalante	1.75" 16 W
Microfone: Electret - Resistência Dinâmica 50	

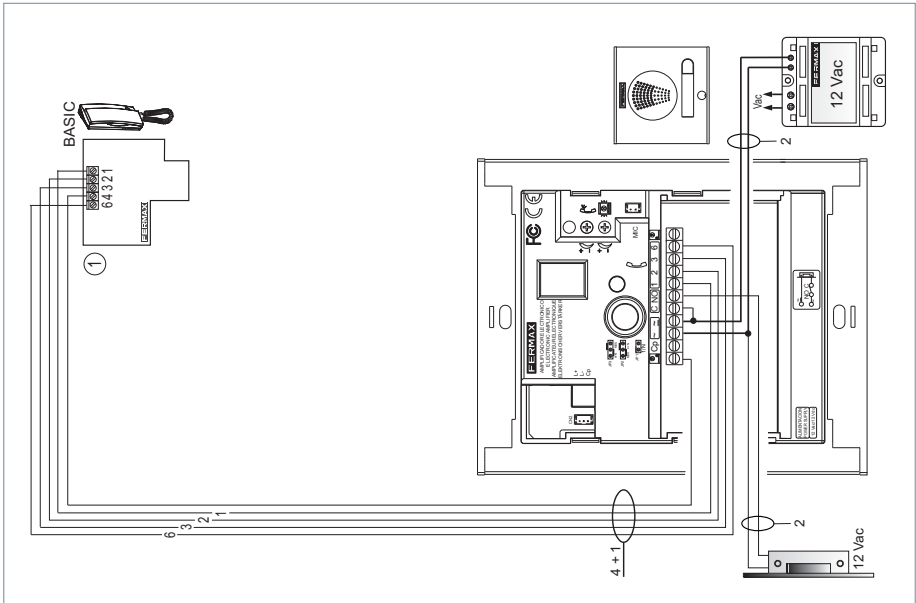


ESQUEMA DE CABLAGEM

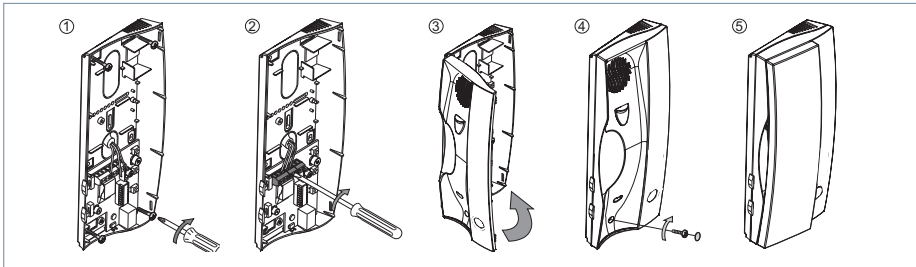
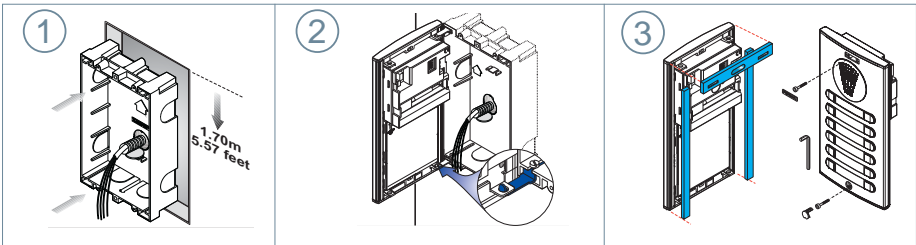
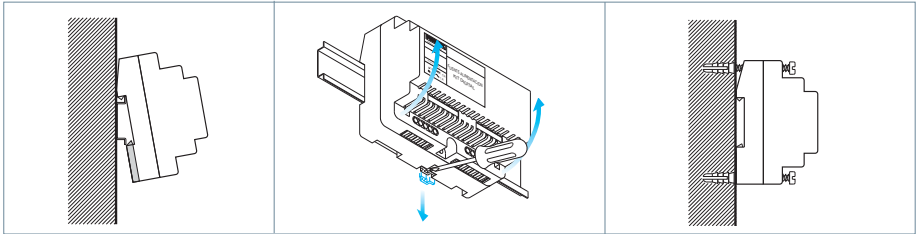
ESQUEMA DE CABLAGEM KIT 2 L - 24L



ESQUEMA DE CABLAGEM KIT 1 L



✕ INSTALACIÓN / INSTALLATION / INSTALLATION / INSTALLATION / INSTALAÇÃO



⚙️ TABLA DE DISTANCIAS / DISTANCES TABLE / TABLEU DISTANCES / ABSTANDSTABELLE / TABELA DE DISTÂNCIAS

metros / metres	pies / feet	mm ²	AWG	mm ²	AWG
0 - 100	3 - 300	0.5	20	1	17
100 - 300	300 - 900	1	17	1	17