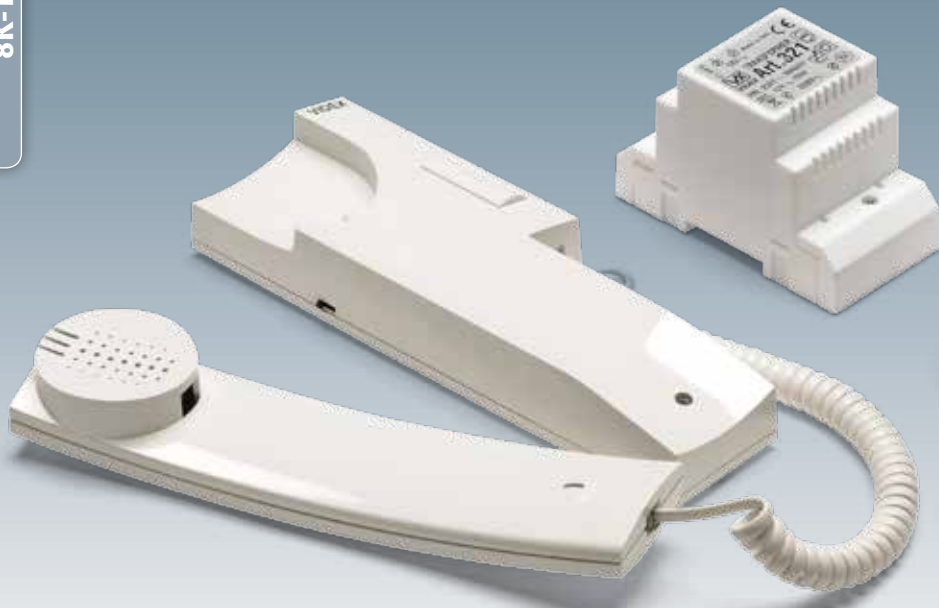
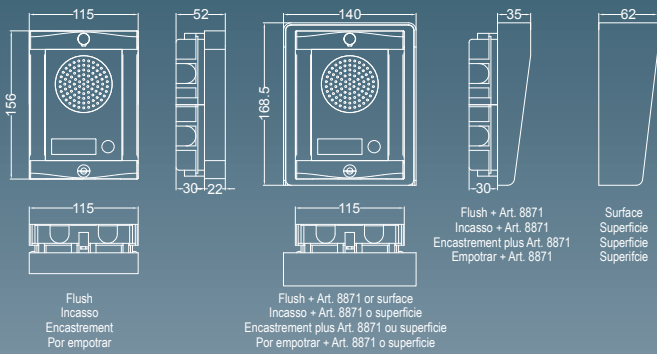


8K-1S



### 8000 SERIES AUDIOKIT

The circuitry of the outdoor stations provided with these kits, has a built-in lock relay to enable the electric lock. This reduces the cable requirements to only 4 ("3+1") between the outdoor station and the intercom. This reduced cable requirement allows longer cable runs and reduced cable sizes to be used between the two units.

#### 8K-1

One button door entry kit comprised of:

**1 Outdoor station** including a one call button speaker unit Art.8836M-1, flush mounting box with module support and hinge Art.8851 plus covering frame Art.8861. Standard finishes: mirror stainless steel for the front plate and aluminium for the module support.

**1 Art.3011** 3000 Series Smart Line wall mount telephone with "door open" push button and electronic call tone with adjustable volume on 3 levels.

**1 Art.321** Power Supply in a type A 3 module DIN box.

Packing: cardboard 30.5x29x7cm total weight 1.4 Kg.

#### 8K-2

As 8K-1 but two button version with 2 intercoms and 2 call push button speaker unit Art.8836M-2.

Packing: cardboard 41x29x7cm total weight 1.75 Kg.

#### 8K-1S, 8K-2S

As above door entry kits but with surface mounting box Art.8881.

Packing: the same as the flush version but with a total weight of 1.85 Kg for one button version and 2.2 Kg for two button version.

For flush mounting outdoor station, a rainshield Art.8871 is available to install instead of the covering frame.

The module support, the module front plate and the rainshield are available in other finishes, **see pictures 2 on page 34** for available versions and additional suffix to use for orders.

