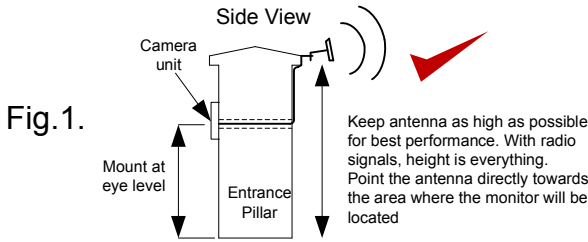


Installation Manual

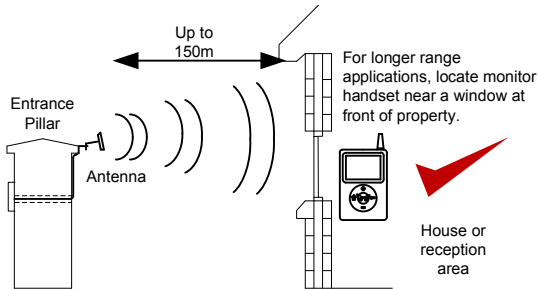
Installation

- 1) Before you install this equipment, please read this full manual.
- 2) Before screwing the camera unit to a wall or pillar, quickly connect 12v power to the camera unit, power up the monitor unit, and RANGE TEST the system to check if it works at your required distance!
- 3) As per Fig 1, install the speech panel on the front of the pillar.



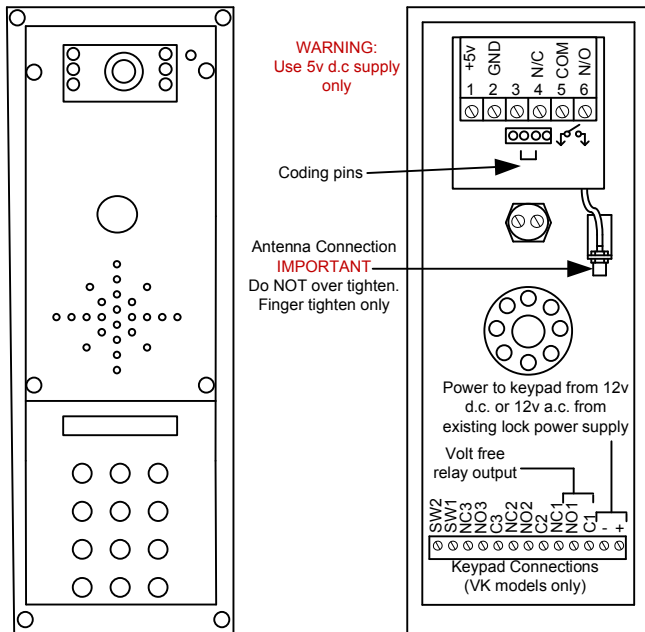
- 4) Install the antenna as high as possible on the top of the pillar to ensure line of sight in all directions for best possible reception.

Note: Wood and glass only reduce signal strength by 10-20%. Masonry will reduce signal strength by 20-50% per wall. Metal can totally block signals.

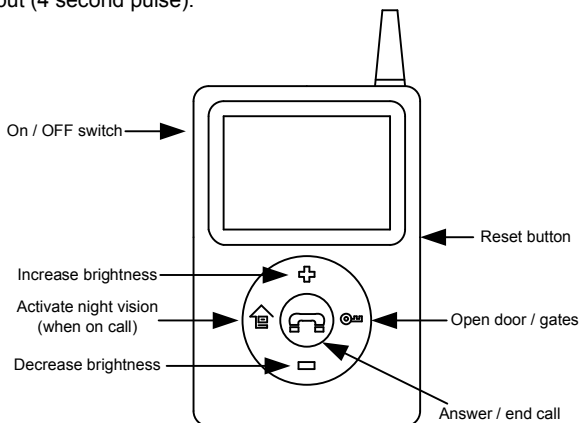


Wiring

- 5) Open the unit by removing the 4 OUTER screws as shown.
- 6) Connect 12v d.c observing polarity.



- 7) For automatic gates, use pins 5 and 6 for volt free momentary relay output (4 second pulse).



Operation and Testing

- 1) Plug in the charger for the charging cradle and charge the monitor. For best performance from the battery, it is recommended to give the handset a 12 hour charge before use.
- 2) To begin using, switch on the monitor by pressing ON switch for 2-3 seconds.
- 3) Press the call button on the speech panel. The handset should ring.
- 4) Once the handset rings, press the answer call button.
- 5) If using at night, you can activate night vision mode by pressing the night vision button.
- 6) Check for 2 way voice, and that you can see a series of still frames from the digital camera. Note: After visually identifying the visitor, you must hold the monitor handset close to your ear like a normal phone in order to hear properly.
- 7) Press the door / gate release button.
- 8) End the call by pressing the end call button.

Coding (for adding extra handsets)

- 1) On the new monitor, press the button to activate the screen display.
- 2) Then press the button.
- 3) The LCD screen should display a menu, and will show the settings symbol.
- 4) Use and to navigate, to escape or go back one level, and to accept or enter.
- 5) Press to select the settings option.
- 6) You will have 2 choices..
 - Own ID number
 - Security Password
- 7) Press to select Own ID number.
- 8) This will usually be defaulted to 1. For adding a second handset, this must be changed to 2, and for a third changed to 3.
- 9) Press to change to the required ID number.
- 10) Press to escape up on level, and then use to navigate to code and select this option.
- 11) You will be asked for a security pass code. Default is 0000. Press enter to accept the default unless you have changed it.
- 12) Repeat this step with the existing handset monitor so that both monitors have the same display.
- 13) On both units you will see 4 options as follows...
 - Match code
 - Give code
 - Receive code
 - Clear code
- 14) Using and , on the new handset monitor, select receive code. On the working handset select send code.
- 15) If the process is successful you will see success message. Press escape on both units to return to home screen and then test operation as normal.

Keypad Programming (only for VK model)

