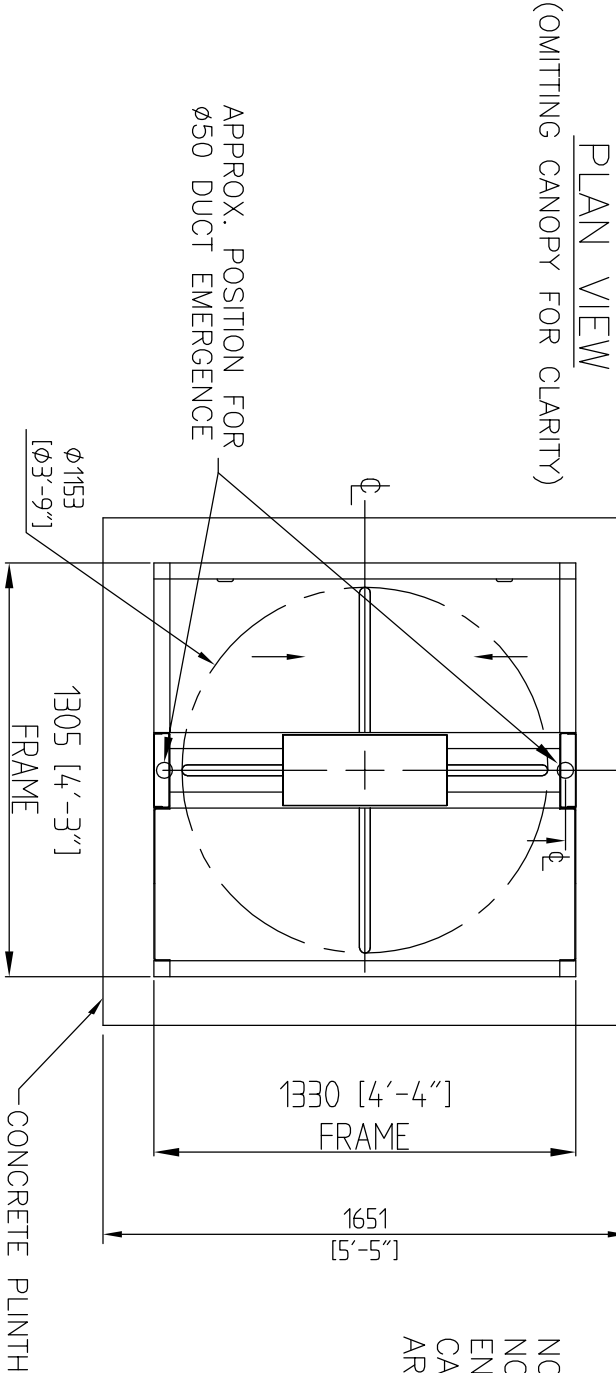


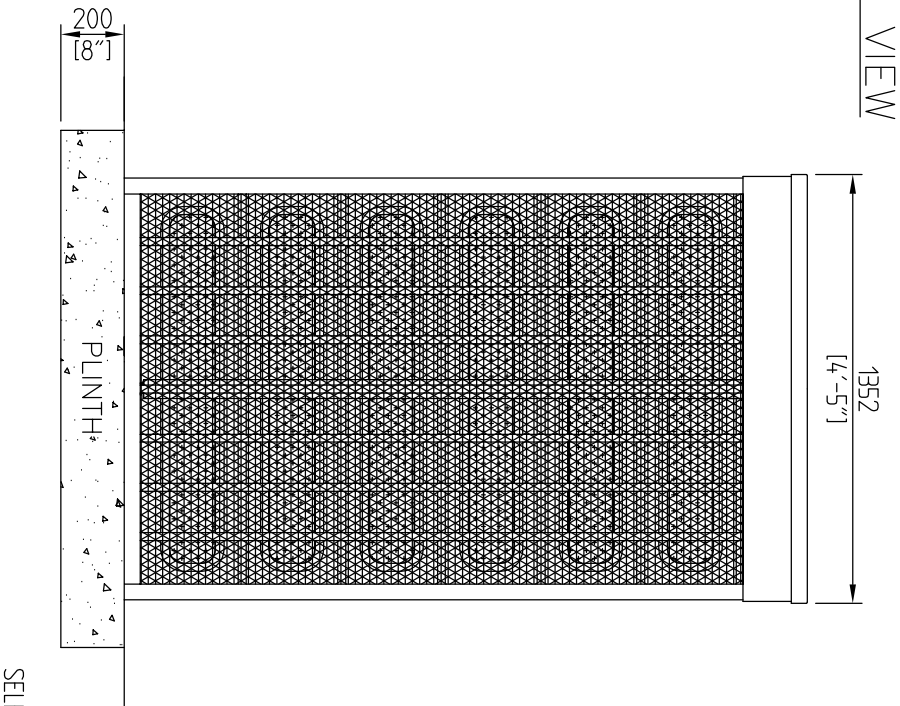
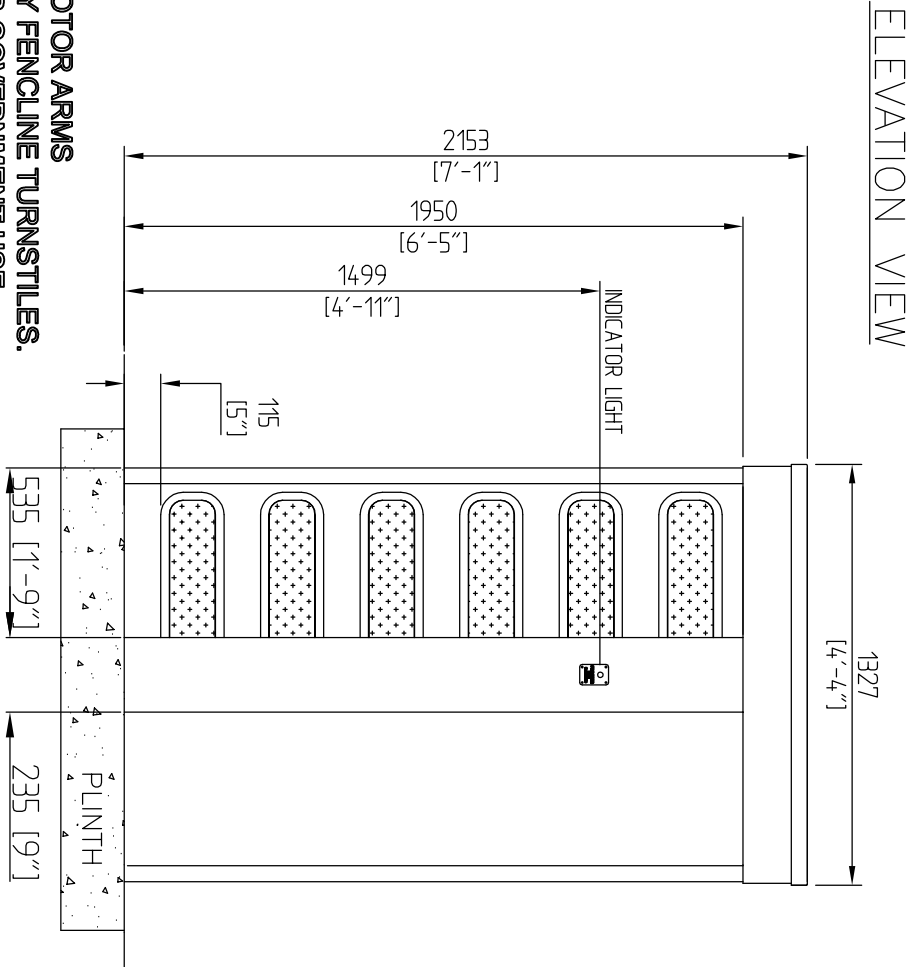
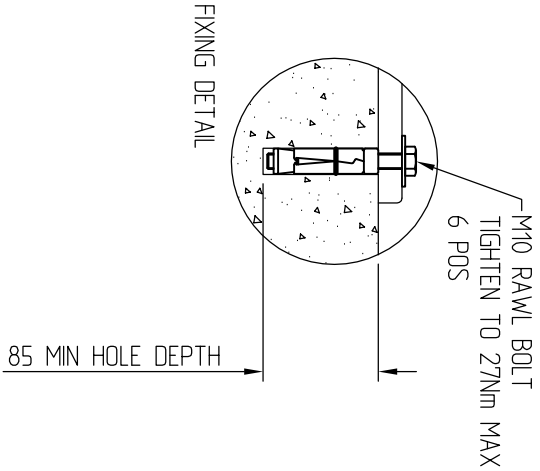
DESIGN RIGHTS

INTELLECTUAL PROPERTY OF CLARKE INSTRUMENTS LIMITED  
COPYRIGHT © NOT TO BE COPIED WITHOUT PERMISSION

WARNING - SOME CIL PRODUCTS ARE ALSO THE  
SUBJECT OF PATENT PROTECTION



NOTE :-  
NORMALLY THE POWER SUPPLY UNIT AND CONTROL BOARD ENCLOSURE ARE CONTAINED WITHIN THE CANOPY.  
CABLES TO THIS AREA (MAINS SWA AND SIGNAL CABLES) ARE DUCTED THROUGH VERTICAL SECTIONS OF THE TURNSTILE.



NOTE:  
THIS DESIGN LAYOUT HAS 115mm TIGHT GAPS BETWEEN ROTOR ARMS  
AND IS BASED ON THE REQUIREMENTS FOR HIGH SECURITY FENCELINE TURNSTILES.  
THESE REQUIREMENTS WERE TESTED AND APPROVED FOR GOVERNMENT USE.

		PROTECTIVE FINISH		MATERIAL		Clarke Instruments Ltd.	DRG.No.  430-200  A3	
2	11.11.11	NORMATIVE DEFINITION RE-WORKED TESTED AND APPROVED FOR GOVERNMENT USE		STORES REF.				
1	25.02.11	PRODUCTION ISSUE		BASED ON 003231-2				
C	25.03.09	NORM DEFINITION UPDATED		TITLE				
B	01.12.08	ROTOR SPACING UPDATED TO KEEP GAPS TO A MINIMUM		TYPE '430S/H' SINGLE HOOPED 90deg				
A	26.11.08	INITIAL ISSUE		HIGH SECURITY TURNSTILE				
ISSUE	DATE	CHANGE NOTE		TESTED AND APPROVED FOR GOVERNMENT USE				
DRAWN	MKEADY	CHECKED	CERTD.	SCALE	N.T.S			
		TOLERANCES FOR DIMENSIONS				SELECTED HIDDEN DETAIL OMITTED FOR CLARITY		
		DIMS. SHOWN THUS >449 ±1						
		DIMS. SHOWN THUS 1 ±0.4						
		DIMS. SHOWN THUS 10 ±0.15						
		DIMS. SHOWN THUS 100 ±0.05						
		UNLESS OTHERWISE STATED						
		ALL DIMENSIONS IN MILLIMETRES						