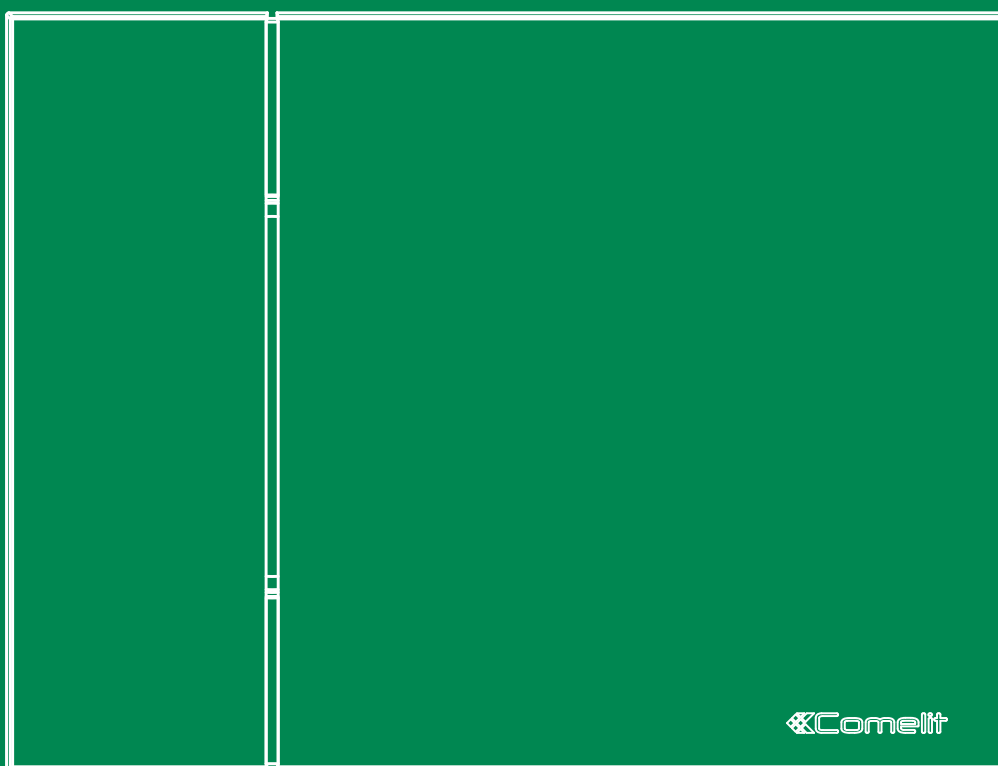


**EN**

TECHNICAL  
MANUAL



 **Comelit**

Additional ringtone  
Art. 1229A

 **Comelit**<sup>®</sup>  
Passion. Technology. Design.

# Table of contents



Description..... 3

Technical specifications ..... 4

Installation Art.1229A..... 5

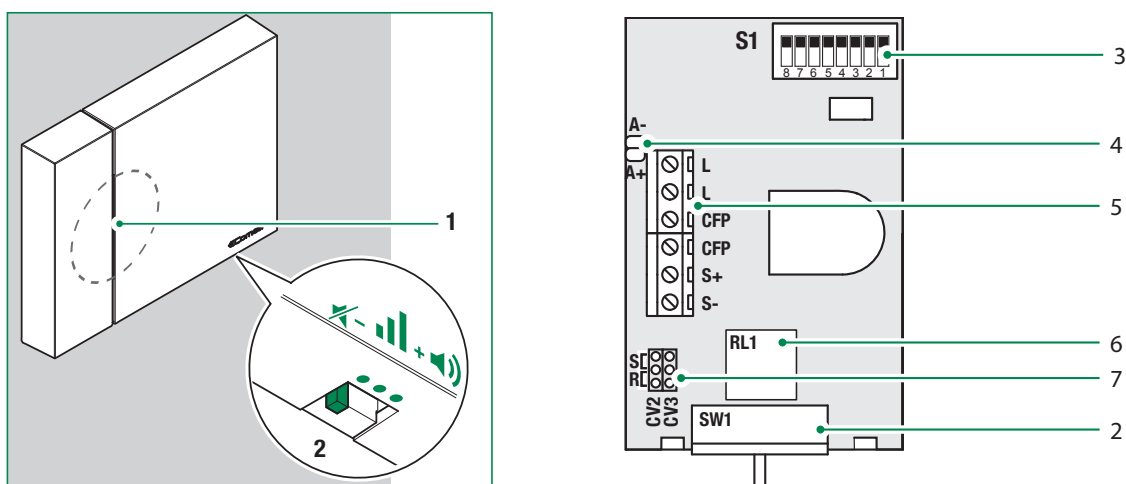
Connections..... 6

    1229A connections.....6

System performance and layouts ..... 7

# Description

Article 1229A is an audio/video switch unit that can be used in "Building Kit" (exclusively 2-wire), Simplebus Top and Kit Video systems.



1. Speaker.
2. **SW1** Volume adjustment switch.  
Set the switch to the left to exclude the call ringtone (Privacy function).
3. Switch **S1** for user code programming (see "[addressing table](#)").
4. **A-A+** Loudspeaker connector.
5. Terminal block:  
**LL** bus line connection  
**CFP CFP** Floor door call input  
**S+ S-** terminals for call repetition device, or C-NO contacts call repetition relay **RL1**.
6. Ringtone repetition relay, **C-NO** contacts moved to **S+ S-** by moving **CV2** and **CV3** to **R**.
7. Configuration jumpers **CV2** and **CV3**.  
Position **S** for the additional ringtone. Position **R** for the relay.

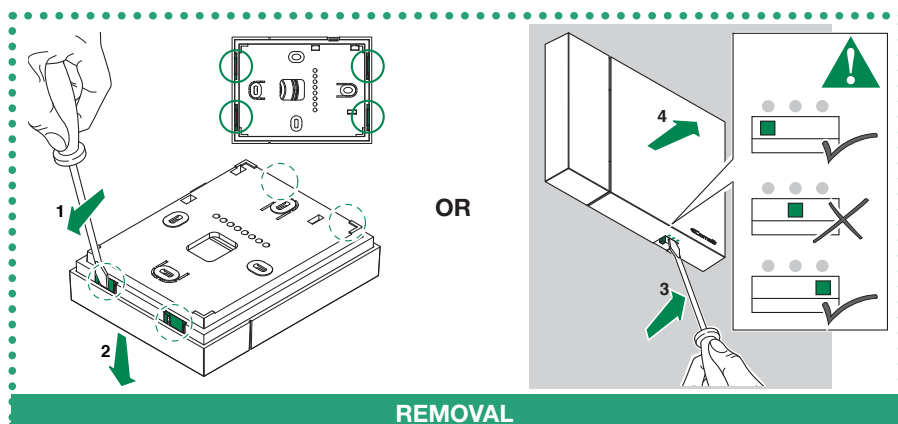
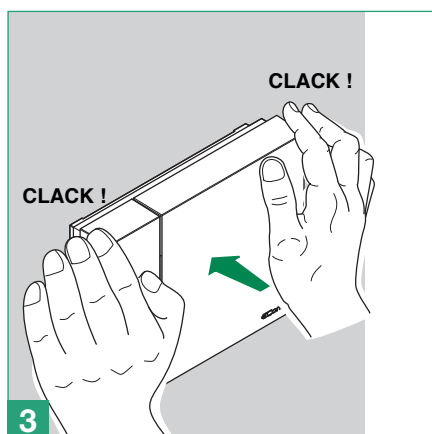
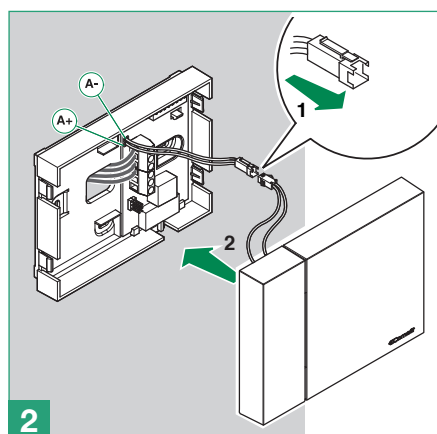
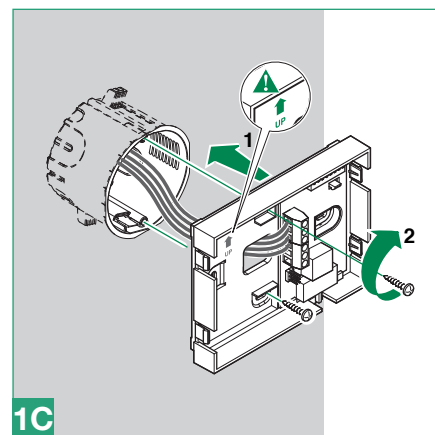
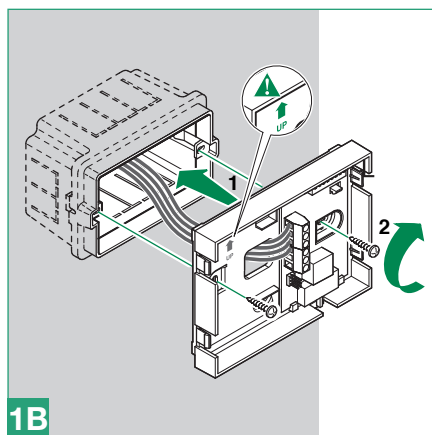
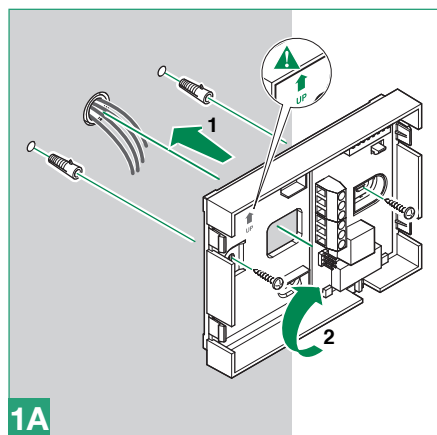


**Art. 1229A DOES NOT work in SB1 systems.**

# Technical specifications

GENERAL INFO	
Product height (mm)	126
Product width (mm)	96
Product depth (mm)	24
MOUNTING/INSTALLATION	
DIN rail mounted	No
DIN modules (no.)	No
AUDIO/VIDEO SPECIFICATIONS	
Audio system	Yes
Audio/video system	Yes

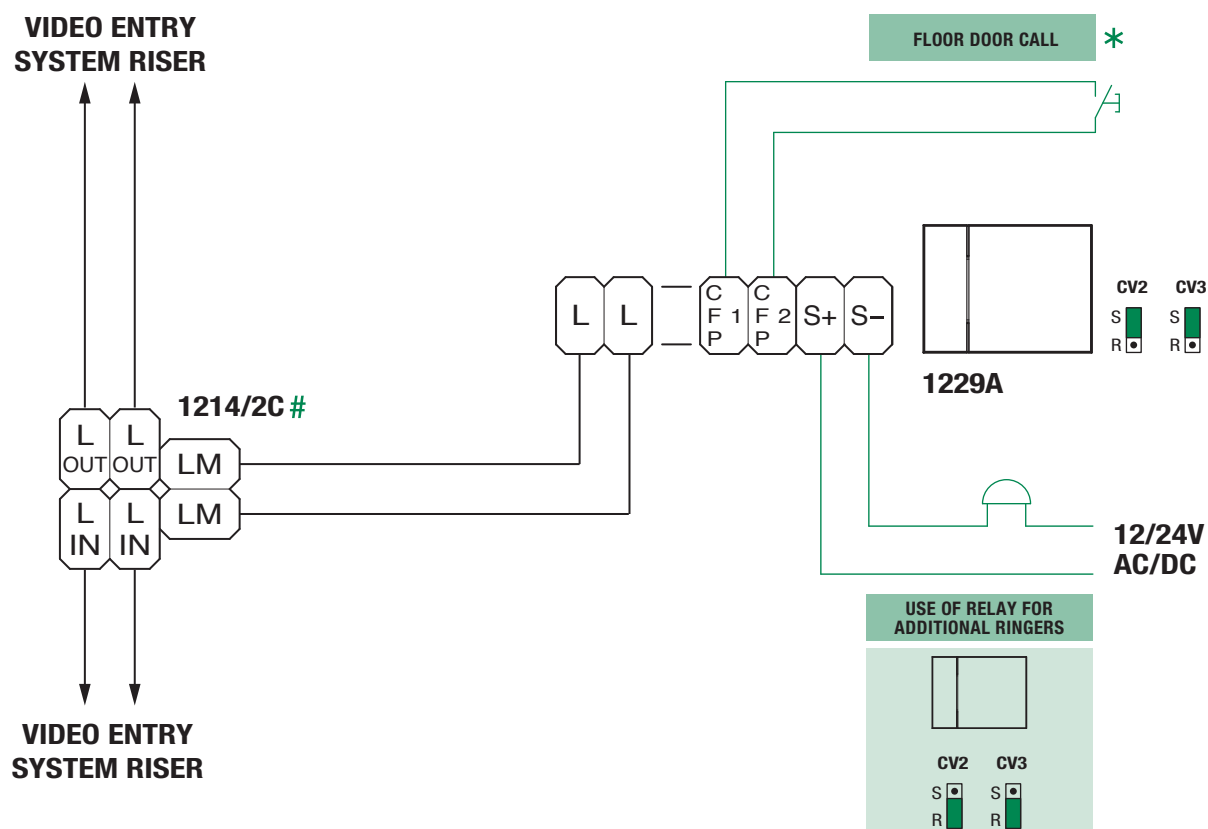
# Installation Art.1229A



REMOVAL

# Connections

## 1229A connections



\* **20 m MAX** - Use shielded cable for the connection and do not route the cables in the vicinity of heavy inductive loads or power supply cables (230V/400V). Where additional ringers, entry phones or monitor backplates have the same user code, connect the CFP button on one only; all the devices will ring simultaneously.

# Only required in video systems.

## System performance and layouts

For further information of system performance and to view installation layouts, click on the type of system that best meets your needs:

- [Audio/video kit](#) for the creation of audio-video systems for *individual residences*.
- [Building Kit audio/video system](#) for the creation of audio-video systems for *small apartment blocks*.
- [SBTOP audio/video system](#) for the creation of audio-video systems for *residential complexes*.
- [SB2 audio system](#) for the creation of audio systems for *residential complexes*.

CERTIFIED MANAGEMENT SYSTEMS



[www.comelitgroup.com](http://www.comelitgroup.com)

Via Don Arrigoni, 5 - 24020 Rovetta (BG) - Italy

 **Comelit®**  
Passion. Technology. Design.