

bell system Lock Releases & Door Hardware

The standard lock releases are designed to operate with night latch locks on timber framed doors. Each release is fabricated from a variety of materials;

- Main mechanism - plated zinc
- Latch - chrome-plated zinc alloy.
- Faceplate - epoxy painted steel
- Side cover - stainless steel

Standard Lock Release Models:

203



The 203 lock release is the standard unit included in most of our door entry and access control systems. It is designed to match surface-mounted night-latch locks e.g. Union 1028 (an additional model INV203 inverter case is required for outward opening doors).

Operation: Surface failsecure

Operating voltage: 12v AC or DC

Coil impedance: 30 ohms

Current consumption: 400mA

Pressure: withstands up to 300 Kg of impact (breakdown at 600 Kg)

204



The model 204 lock release is designed to complement morticed night-latch locks e.g. Union 2332 (a model 321 escutcheon plate is required for outward opening doors).

Operation: Mortice failsecure

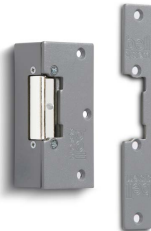
Operating voltage: 12v AC or DC

Coil impedance: 30 ohms

Current consumption: 400mA

Pressure: withstands up to 300 Kg of impact (breakdown at 600 Kg)

205



The 205 release remains open when activated from a momentary trigger and will only lock when the door has been opened and shut. This is ideal when controlling access at a lobby door or when the door is a long distance away for the visitor.

Operation: Surface/mortice failsecure

Operating voltage: 12v AC or DC

Coil impedance: 30 ohms

Current consumption: 400mA

Pressure: withstands up to 300 Kg of impact (breakdown at 600 Kg)

206



The model 206 is used for failsafe applications, i.e. it requires continuous power to remain locked and in the event of a power failure the release is opened. These releases can be directly connected to the failsafe outputs of our Access Control systems but a suitable 12v DC power supply and relay may be required when connecting to a standard door entry telephone system. Agreement must be given from a Fire Officer when installing these releases to Fire Doors.

There are two models; 12v DC or 24v DC.

Operation: Surface/mortice failsafe

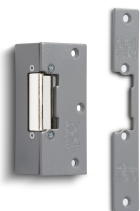
Operating voltage: 12v or 24v DC

Coil impedance: 60 ohms or 220 ohms

Current consumption: 200 mA or 210 mA

Pressure: withstands up to 300 Kg of impact (breakdown at 600 Kg)

209



With its 60 ohm coil the 209 release is continuously rated and can be used on systems where the release needs to be activated for a prolonged period. There are two models; either 12v DC or 24v DC.

Operation: Surface/mortice failsecure

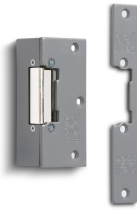
Operating voltage: 12v or 24v DC

Coil impedance: 60 ohms or 220 ohms

Current consumption: 110 mA or 400 mA

Pressure: withstands up to 300 Kg of impact (breakdown at 600 Kg)

210



The model 210 has two face-plates to cover both the 203 and 204 release applications making it ideal for distribution.

Operation: Surface or Mortice Fail secure

Operating voltage: 12v AC or DC

Coil impedance: 30 ohms

Current consumption: 400 mA

Pressure: withstands up to 300 Kg of impact (breakdown at 600 Kg)

2208



This lock release is ideal for those doors that may be prone to constant use since it has an increased loading force over the standard range. It works with morticed night-latch locks e.g Union 2332 (a model 321 escutcheon plate is required for outward opening doors).

Operation: Mortice Fail secure

Operating voltage: 12v AC or DC

Coil impedance: 20 ohms

Current consumption: 600 mA

Pressure: withstands up to 500 Kg of impact (breakdown at 1000 Kg)

2208F



This failsafe lock release is ideal for those doors that may be prone to constant use since it has an increased loading force over the standard range. It works with morticed night-latch locks e.g Union 2332 (a model 321 escutcheon plate is required for outward opening doors).

Operation: Mortice Fail safe

Operating voltage: 12v DC

Coil impedance: 70 ohms

Current consumption: 170 mA

Pressure: withstands up to 500 Kg of impact (breakdown at 1000 Kg)

2208FM



This failsafe release includes a N/O (normally open) and a N/C (normally closed) contact for door monitoring purposes. This is a suitable for connecting to a remote alarm system or for use with our model XL5-LX telephones.

Operation: Mortice Fail safe

Operating voltage: 12v DC

Coil impedance: 70 ohms

Current consumption: 170 mA

Pressure: withstands up to 500 Kg of impact (breakdown at 1000 Kg)

2208M



This failsecure release includes a N/O (normally open) and a N/C (normally closed) contact for door monitoring purposes. This is a suitable for connecting to a remote alarm system or for use with our model XL5-LX telephones.

Operation: Mortice Fail secure

Operating voltage: 12 V AC or DC

Coil impedance: 70 ohms

Current consumption: 170 mA

Pressure: withstands up to 500 Kg of impact (breakdown at 1000 Kg)

Model	12v AC	12v DC	Surface	Mortice	Fail-secure	Fail-safe	Continuously Rated	Monitor Switch	Delayed Action	Heavy Duty
203	✓	✓	✓		✓					
204	✓	✓		✓	✓					
205	✓	✓	✓	✓	✓				✓	
206		✓	✓	✓		✓	✓			
209		✓	✓	✓	✓		✓			
210	✓	✓	✓	✓	✓					
2208	✓	✓		✓	✓					✓
2208F		✓		✓		✓	✓			✓
2208FM		✓		✓		✓	✓	✓		✓
2208M	✓	✓		✓	✓			✓		✓

Lock Release Accessories

101 Case



A surface fitting case that can be used when it is not possible to side fix a lock release plate to the door frame.

202 Case



This case can be supplied for any of our standard surface lock releases to give a professional finish.

321 Plate



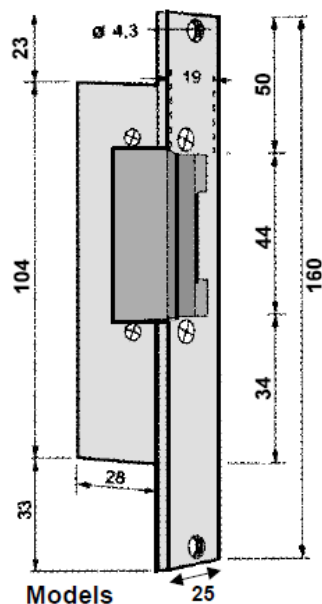
The 321 escutcheon plate covers the lock area of a door when a mortice lock release is installed with a Union 2332 type lock on an outward opening door. The installation of the model 321 helps prevent the insertion of a tool to force the release open.

INV203



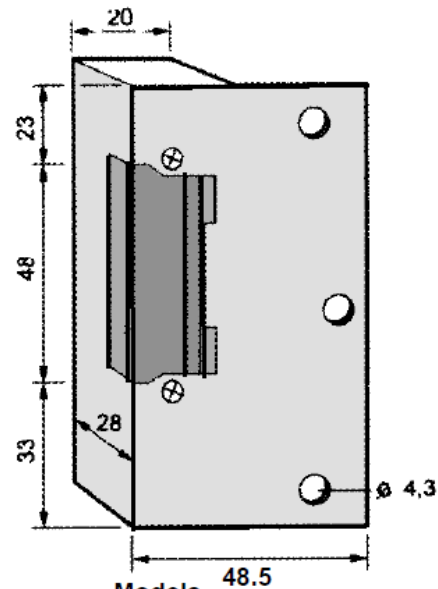
The model INV203 inverter case is designed for converting a surface mounting lock release to work with a surface night-latch lock on an outward opening door.

General lock release dimensions



Models

204
205 (Mortice fitting)
206 (Mortice fitting)
209 (Mortice fitting)
210 (Mortice fitting)
2208
2208F
2208FM
2208M



Models

203
205 (Surface fitting)
206 (Surface fitting)
209 (Surface fitting)
210 (Surface fitting)

Maglocks and Accessories

EML600-M



- Aluminium housing.
- 12 VDC @480/240mA.
- 280kgs (600lb) holding force.
- Built in surge protection.
- Monitored

Features:

- Fire Tested (30 & 60 minute timber door sets)
- Slim line mini magnet.
- Clean and compact design in aluminium.
- Multi LED indication
- No residual magnetism

EML600-ZL



- Fully adjustable Z & L bracket set for slim maglocks.
- Suitable for inward opening doors
- Maximum adjustment = 18mm
- 2 required for double maglocks

Features:

- For use on inward opening doors
- Anodised aluminium finish
- Fully adjustable

EML600-AH



- Light and strong aluminium armature housing
- Multiple fixing holes for holding strength
- Supplied with fixing screws and armature securing bolt

Features:

- Fire rated (30, 60, 90 & 120 min timber door set)
- Removes the need to drill through the door
- Requires 2 for double maglocks

EX-EML600



- Stainless steel housing
- 280kgs (600lb) holding force
- 12vDC current consumption – 500mA current draw

Features:

- External magnet
- Weatherproof
- Dual voltage 12v/24v
- Side or face fixing

EX-EML600-ZL



- Fully adjustable brackets
 - ZL bracket for use on inward opening gates
- Features:**
- Anodised aluminium finish
 - Z Bracket can provide an extra 20mm of reach for non standard door settings