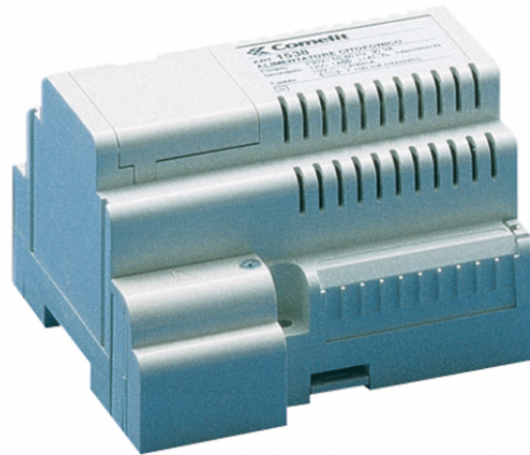




1550/6D

POWER SUPPLY FOR COMELBUS DIGITAL CALL SYSTEMS (8 DIN MODULE)



Supplies the power to the audio and digital sections. 12-24V AC input (use Art.1195), outputs: 12V DC (200 mA) for the audio section, 12V AC for door opening and any lamps, 24V DC (800 mA) for the digital section. A maximum of 60 monitor or telephone interface cards and one call module can be connected for each power supply. Complete with data line reconstruction circuit and line sensor able to find and isolate any short-circuits in the data line connected on its load side. Dimensions: 105x95x65 mm (6 DIN modules).



1550/6D

**POWER SUPPLY FOR COMELBUS DIGITAL CALL SYSTEMS (8
DIN MODULE**