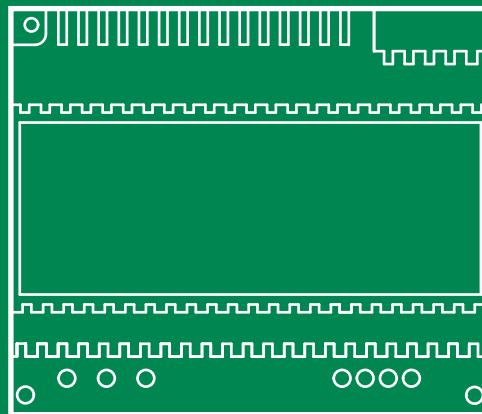


EN

TECHNICAL
MANUAL



Power supply unit
Art. 1210

 **Comelit**[®]
Passion. Technology. Design.

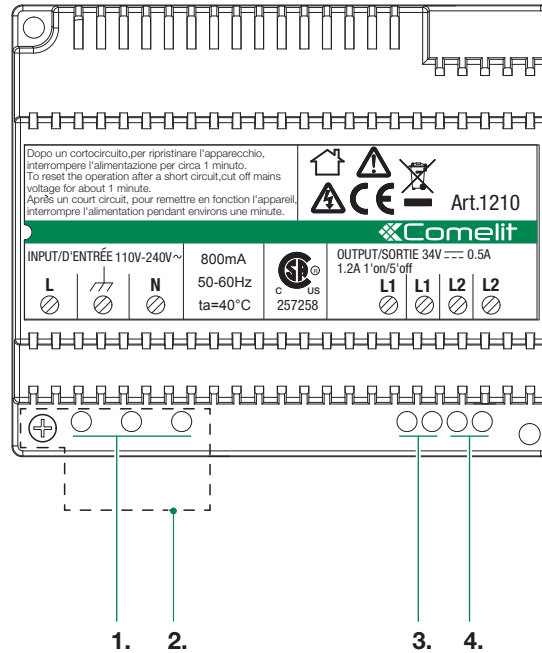
Table of contents



Description.....	3
Technical specifications	4
Connections.....	5
Connections 1210.....	5
System performance and layouts.....	5

Description

Article **1210** is a power supply unit for "Building Kit" (pure 2-wire) systems.



1. L \equiv N mains power input 110-240 V.
2. Terminal protection.
3. L1 L1 main bus line output (34 V).
4. L2 L2 riser bus line input (34 V).



A suitable omnipolar switch with a contact opening of at least 3mm must be installed upstream of the video entry phone system.

- **Disconnect the power supply before carrying out any operations on the wiring.**
- **Replace the protections on the terminals.**
- **Do not obstruct the ventilation and cooling slots or apertures.**

Technical specifications

MAIN SPECIFICATIONS

Input voltage AC	110-240 Vac
Output voltage DC	34V
Plug-in power supply unit	No
Applicable to DIN rail	Yes
Number of DIN modules	6
Max. current delivered (A)	1.2A

GENERAL INFO

Product height (mm)	108mm
Product width (mm)	90mm
Product depth (mm)	62mm
Operating temperature (°C)	0-40°C

AUDIO/VIDEO SPECIFICATIONS

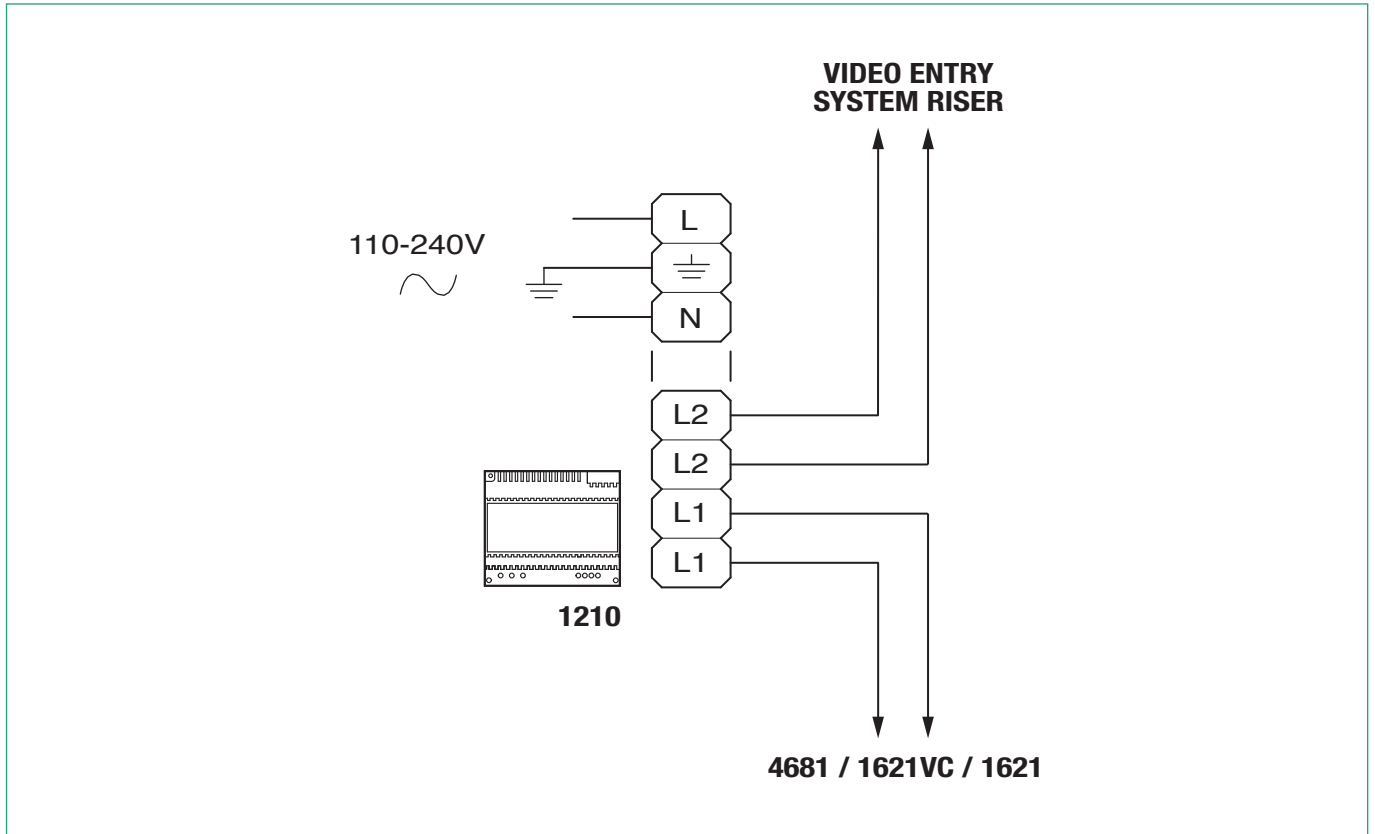
Audio/video system	Yes
--------------------	-----

ELECTRICAL SPECIFICATIONS

Maximum current absorption (mA)	800mA
Maximum power delivered	40W

Connections

Connections 1210



System performance and layouts

For further information of system performance and to view installation layouts, click on the type of system that best meets your needs:

- [Building Kit audio/video system](#) for the creation of audio-video systems for small *apartment* blocks
- [SB2 audio system](#) for the creation of audio systems for *residential complexes*.

CERTIFIED MANAGEMENT SYSTEMS



www.comelitgroup.com

Via Don Arrigoni, 5 - 24020 Rovetta (BG) - Italy

