

vandal resistan audio panels



audio door entry

post



Shown in the picture is our standard post. SRS posts are of stainless steel construction and do not require painting. We can supply posts to you design if you prefer.

DESCRIPTION	HEIGHT MM	CODE
post	1500mm	SPECPOST

call button modules



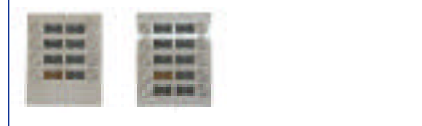
50100-1 50100-2 50100-3



50100-4 50100-5



50100D02 50100D04 50100D06



50100D08 50100D10

DESCRIPTION	H X W	CODE
1 button module	150 x 120	50100-1
2 button module	150 x 120	50100-2
3 button module	150 x 120	50100-3
4 button module	150 x 120	50100-4
5 button module	150 x 120	50100-5
2 double button module	150 x 120	50100D02
4 double button module	150 x 120	50100D04
6 double button module	150 x 120	50100D06
8 double button module	150 x 120	50100D08
10 double button module	150 x 120	50100D10

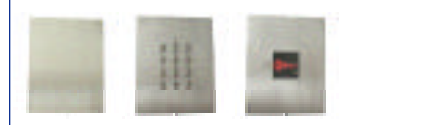
audio modules



50110 50110-1 50110-2

DESCRIPTION	H X W	CODE
0 button, audio module	150 x 120	50110
1 button, audio module	150 x 120	50110-1
2 button, audio module	150 x 120	50110-2

miscellaneous modules



50100 501210 501220

SRS panels with proximity cut out do not include the reader. See page 19 for suitable stand alone access control kits eg KDC250P

DESCRIPTION	H X W	CODE
blank module	150 x 120	50100
40 code keypad module	150 x 120	501210
blank proximity module	150 x 120	501220

DDA modules



DDA panels have larger call buttons with high visibility. Each button is also identified with braille lettering and conventional engraving. In addition the panel includes 2 lights (door open & please speak) to assist the visitor

50111-1

DESCRIPTION	H X W	CODE
0 button DDA module with LEDs	150 x 120	50111
1 button DDA module with LEDs	150 x 120	50111-1
1 button DDA module	150 x 120	50111-D1
2 button DDA module	150 x 120	50111-D2
3 button DDA module	150 x 120	50111-D3
4 button DDA module	150 x 120	50111-D4



flush frames

These flush frames come complete with a stainless steel back box, a hinged subframe for easier installation. For improved security only one hidden tamper resistant fixing is required for each column of modules.



501851

501856

FLUSH FRAME AND MODULE HOLDER				
MODULES	(HWD)	HIGH	WIDE	CODE
1 module	(233x153x60)	1	1	501851
2 modules	(383x153x60)	2	1	501852
3 modules	(533x153x60)	3	1	501853
4 modules	(383x273x60)	2	2	501854
6 modules	(533x273x60)	3	2	501856
9 modules	(533x393x60)	3	3	501859



surface frames

These surface frames come complete with a stainless steel back box, a hinged subframe for easier installation and anti rain hood. For improved security only one hidden tamper resistant fixing is required for each column of modules.



501881

501883

SURFACE FRAME AND MODULE HOLDER				
MODULES	(HWD)	HIGH	WIDE	CODE
1 module	(205x125x60)	1	1	501881
2 modules	(355x125x60)	2	1	501882
3 modules	(505x125x60)	3	1	501883
4 modules	(355x245x60)	2	2	501884
6 modules	(505x245x60)	3	2	501886
9 modules	(505x365x60)	3	3	501889

1 building a panel

For example if you want a 10 phone audio system using a flush modular panel, select the panel parts from the chart below.

The panel will be assembled in the SRS factory. Normally this can be assembled within 2 working days of receiving an order.

panel consists of:-

audio module	50110	x	1
10 button module	50100D10	x	1
flush box	501852	x	1

2 add phones & psu

Now you must add the telephones, power supply and lock timer relay. See pages 8 - 9 for further information.

panel consists of:-

audio module	50110	x	1
10 button module	50100D10	x	1
flush box	501852	x	1

rest of system consists of:-

telephones	AN9102	x	10
power supply	9307.1	x	1
lock relay	9307.2	x	1

3 add 2nd entrance

panels consist of:-

audio module	50110	x	2
3 button module	50100-3	x	2
flush box	501852	x	2

rest of system consists of:-

telephones	AN9102	x	10
power supply	9307.1	x	1
lock relay	9307.2	x	1
2 entrance relay	AK5343	x	1

i

building your audio system

number of buttons	phone	power supply	modular entrance panel													flush frame	surf. frame		
	AN9102	9307.1	9307.2	50100	50100-1	50100-2	50100-3	50100-4	50100-5	50100D02	50100D04	50100D06	50100D08	50100D10					
1	1	1	1														501851	501881	
2	2	1	1															501851	501881
3	3	1	1	1														501852	501882
4	4	1	1	1														501852	501882
5	5	1	1	1														501852	501882
6	6	1	1	1														501852	501882
8	7 or 8	1	1	1														501852	501882
10	9 or 10	1	1	1														501852	501882
12	11 or 12	1	1	1														501853	501883
14	13 or 14	1	1	1														501853	501883
16	15 or 16	1	1	1														501853	501883
18	17 or 18	1	1	1														501853	501883
20	19 or 20	1	1	1														501853	501883
22	21 or 22	1	1	1														501854	501884
24	23 or 24	1	1	1														501854	501884