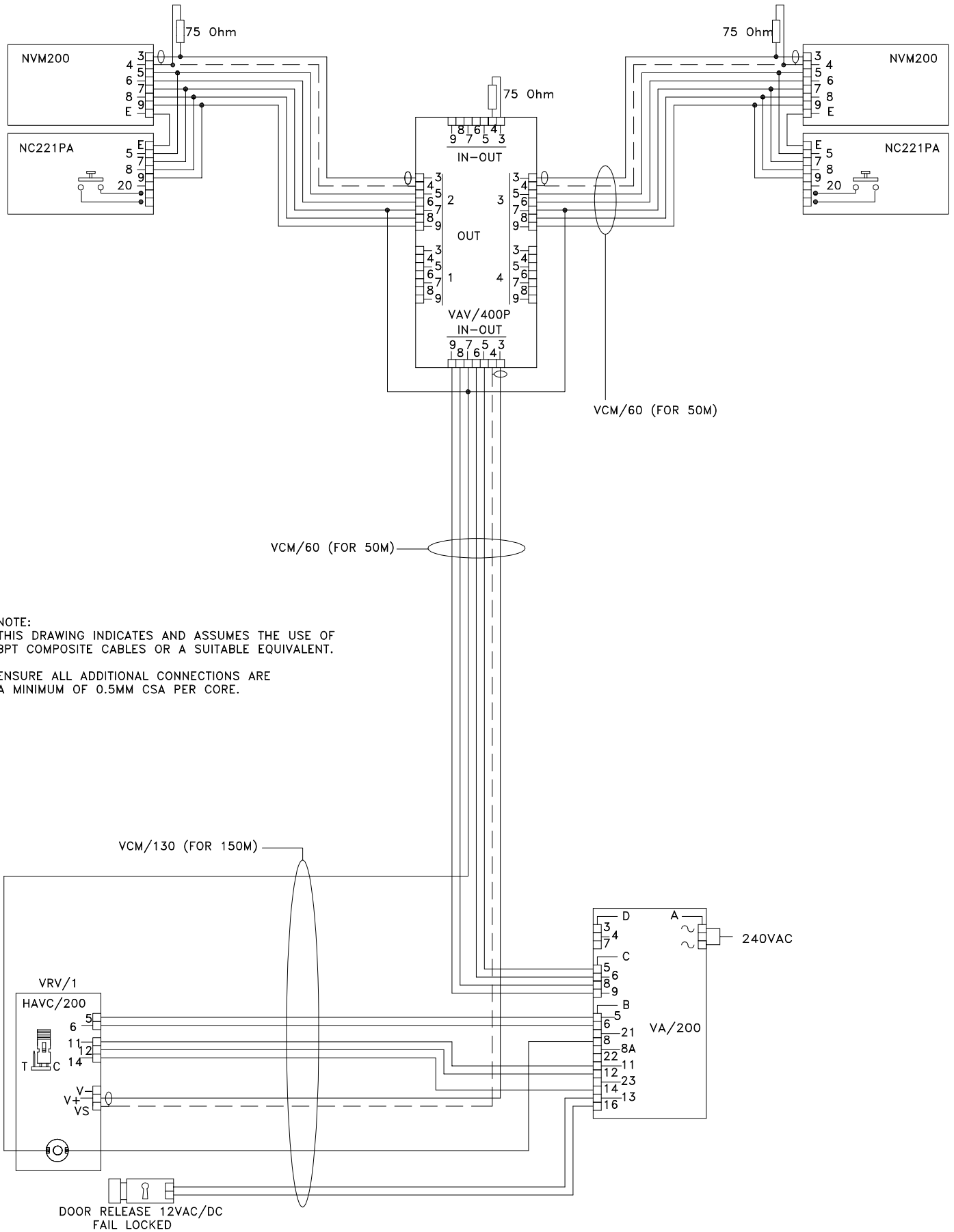


NOTE: CABLE EQUIVALENTS

VCM/130 = RG59 COAX + 4 CORES @ 1.0MMSQ + 8 CORES @ 0.5MMSQ
 VCM/60 = RG59 COAX + 2 CORES @ 1.0MMSQ + 3 CORES @ 0.5MMSQ



NOTE:
 THIS DRAWING INDICATES AND ASSUMES THE USE OF
 BPT COMPOSITE CABLES OR A SUITABLE EQUIVALENT.
 ENSURE ALL ADDITIONAL CONNECTIONS ARE
 A MINIMUM OF 0.5MM CSA PER CORE.

BPT (UK) LTD.
 HERTS. ENGLAND

PREPARED FOR
 INSTALLER INFORMATION

DATE: 19/02/08
 DRAWN: RC
 REVISED:

DRAWING TITLE:

SINGLE HOUSE INSTALLATION USING 1 VR
 VIDEO ENTRY PANEL WITH 2 NOVA MONITORS

DRAWING No: B-1V1N2L